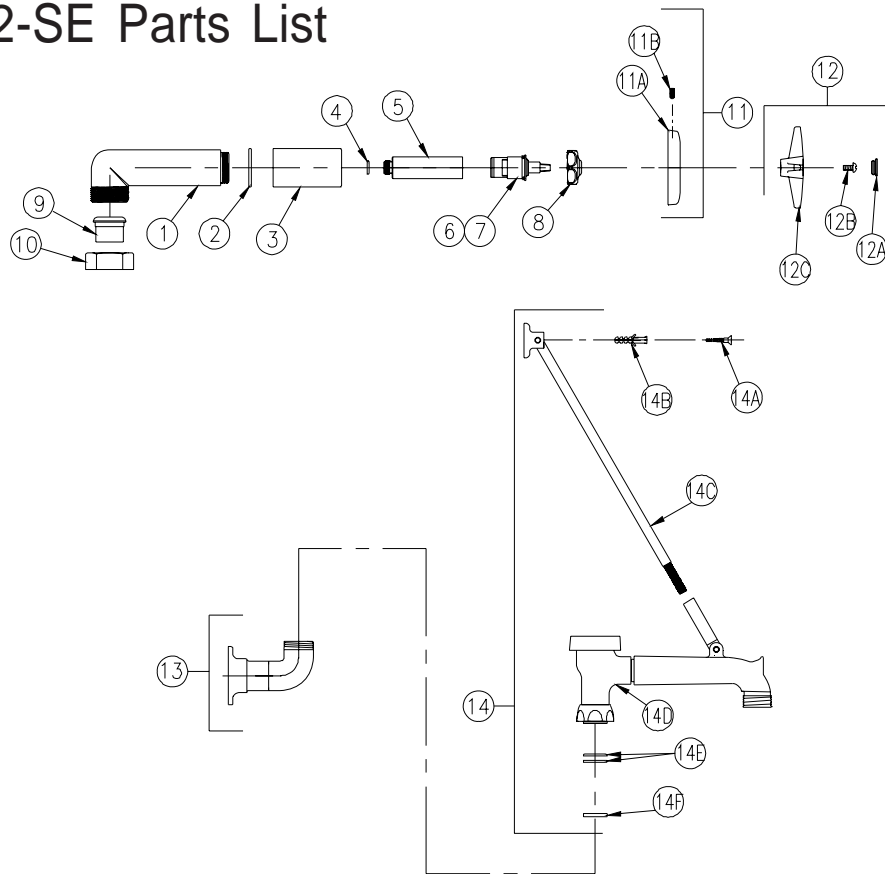


# CLINICAL SERVICE SINK FAUCET



## Z873M2-SE Parts List



Item	Part Number	Description	Qty.
1	69712002	Body Outlet Forward Finished Wall (Out)	1
2	58155024	O-Ring	2
3	61524001	Shower Valve Sleeve	2
4	58155012	O-Ring	2
5	61473002	Shower Inlet	2
6	59517001	Short Cold Cartridge	1
7	59517002	Short Hot Cartridge	1
8	59440001	Handle Nut	2
9	61546001	Union Adaptor	2
10	61547001	Union Nut	2
11	G61994	Shower Valve Escutcheon	2
11A	65557001	Wall Escutcheon	1
11B	66873001	Set Screw	1
12	G60503	Vandal Resistant Four Arm Handles	1
12A	G60500	Hot/Cold Color-Coded Indexes	1
	59454001	Hot Index	1
	59454002	Cold Index	1
12B	62464001	10-32 Screw	2
12C	59518001	Four Arm Handle	2
13	Z82100-WM	Wall Mount Base	1
14	G60554	'M' Vacuum Breaker Spout Assembly - PC	1
14A	62358001	1-1/2" Flat Head Wood Screw	2
14B	62539001	Plastic Anchor	2
14C	60865001	Wall Bracket Rod Assy.	1
14D	60864003	'M' Vacuum Breaker Spout S/A	1
14E	58155018	O-Ring	2
14F	59436001	Spacer Washer	1

ZURN INDUSTRIES, LLC ♦ COMMERCIAL BRASS OPERATION ♦ 2640 SOUTH WORK STREET ♦ FALCONER NY 14733

Phone: 1-800-997-3876 ♦ Fax: 1-919-775-3541 ♦ www.zurn.com

In Canada: ZURN INDUSTRIES LIMITED ♦ 3544 Nashua Drive ♦ Mississauga, Ontario L4V1L2 ♦ Phone: 905/405-8272 Fax: 905/405-1292