

# AQUASPEC<sup>®</sup> FAUCETS

MODEL - Z85500-XL SERIES  
DOUBLE FOOT PEDAL VALVE



## TECHNICAL INFORMATION

---

**MAXIMUM PRESSURE:** 125 PSI

**MAXIMUM TEMPERATURE:** 180°F

**CARTRIDGE STYLE:** ZURN SELF CLOSING FOOT PEDAL CARTRIDGE

---

**⚠ WARNING:** Cancer and Reproductive Harm - [www.P65Warnings.ca.gov](http://www.P65Warnings.ca.gov)

**⚠ ADVERTENCIA:** Cáncer y daño reproductivo - [www.P65Warnings.ca.gov](http://www.P65Warnings.ca.gov)

**⚠ AVERTISSEMENT:** Cancer et effets néfastes sur la reproduction - [www.P65Warnings.ca.gov](http://www.P65Warnings.ca.gov)

---

## INSTALLATION INSTRUCTIONS

---

1. BE SURE SUPPLY LINES ARE THOROUGHLY FLUSHED BEFORE INSTALLATION.
  2. REMOVE FOOT PEDAL VALVE FROM CARTON AND MOUNT TO WALL USING WOOD MOUNTING SCREWS.
  3. CONNECT OUTLET PIPING TO 3/8" NPT PORT ON OF VALVE.
  4. CONNECT SUPPLY PIPING TO 1/2" NPT STOPS. (ONLY WALL MOUNT UNIT PROVIDED WITH STOPS)
  5. TURN SUPPLY WATER ON AND OPERATE FOOT PEDAL CHECKING FOR LEAKS.
- 

## MAINTENANCE

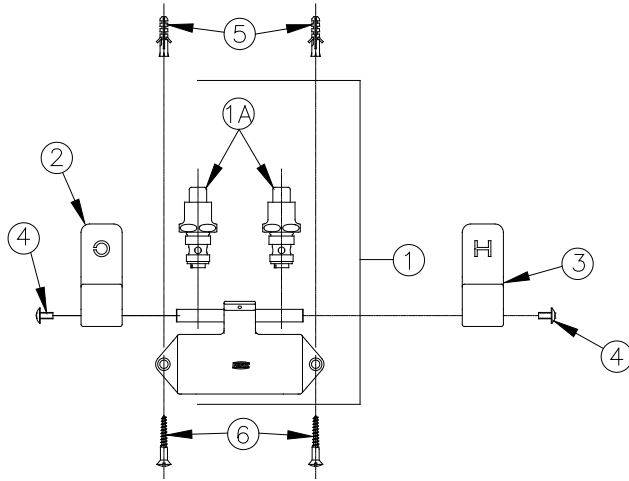
---

1. YOUR ZURN AQUASPEC FOOT PEDAL VALVE HAS A HIGHLY POLISHED NICKEL CHROME PLATED FINISH. CLEAN WITH SOAP AND WATER OR A MILD CLEANER WHICH IS SAFE FOR CHROME PLATING. DO NOT USE ACIDS OR TOILET BOWL CLEANER AS THEY WILL DAMAGE THE FINISH.
  2. G67948 SELF-CLOSING VALVE ASSEMBLY (ITEM #1A OR #6A) MAINTENANCE
    - 2.1. REMOVE SELF-CLOSING VALVE ASSEMBLY (ITEM #1A OR #6A) USING ADJUSTABLE WRENCH. USE CARE TO AVOID DAMAGING THE POLISHED CHROME FINISH.
    - 2.2. RE-ASSEMBLE SELF-CLOSING VALVE TO FOOT PEDAL VALVE BODY ASSEMBLY
    - 2.3. TURN ON WATER SUPPLY AND TEST FOR FUNCTION AND LEAKS AROUND SELF-CLOSING VALVE ASSEMBLY.
- 

## REPLACEMENT PARTS

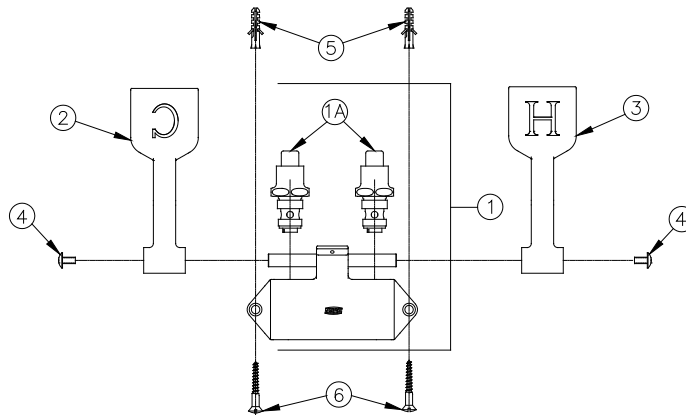
---

G67948 SELF CLOSING VALVE ASSEMBLY



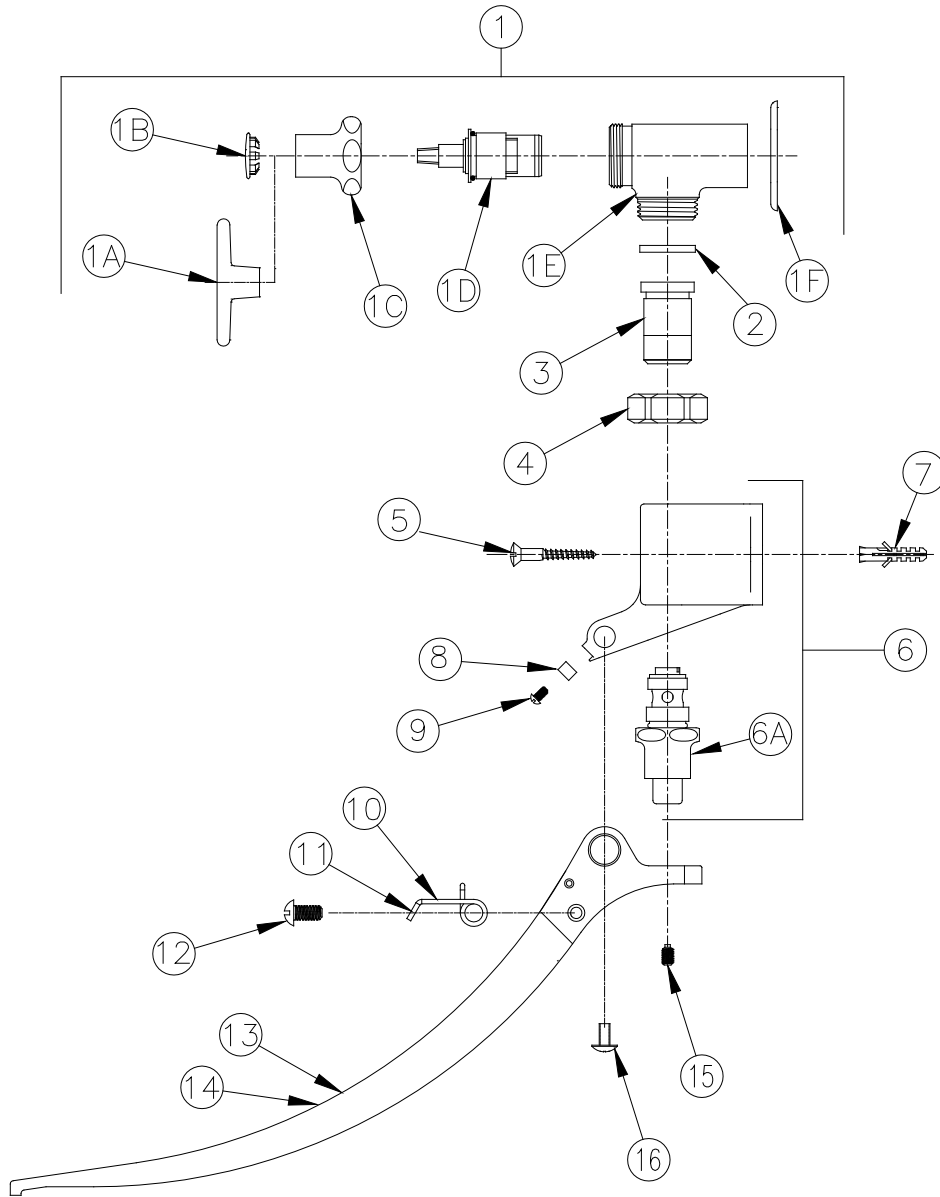
### Z85500-XL PICTURED

Item	Part Number	Description	Qty.
1	G67961	Body Assembly	1
1A	G67948	Self Closing Valve Assembly	2
2	80348001	Short Cold Foot Pedal	1
3	80348002	Short Hot Foot Pedal	1
4	92345001	10-32 Screw	2
5	62359001	Wall Anchor	2
6	61817001	#12 1-1/2" Wood Screw	2



### Z85500-XL-LM PICTURED

Item	Part Number	Description	Qty.
1	G67961	Body Assembly	1
1A	G67948	Self Closing Valve Assembly	2
2	80499003	Medium Cold Foot Pedal	1
3	80499002	Medium Hot Foot Pedal	1
4	92345001	10-32 Screw	2
5	62359001	Wall Anchor	2
6	61817001	#12 1-1/2" Wood Screw	2



### Z85500-XL-WM PICTURED

Item	Part Number	Description	Qty.	Item	Part Number	Description	Qty.
1	G67988	Foot Pedal Stop Assembly	2	6A	G67948	Self-Closing Valve Assembly	2
1A	61551001	Tee Handle	1	7	62359001	Wall Anchor	2
1B	59667001	Plug	1	8	59744002	Plate	1
1C	60807001	Nut	1	9	59742002	Screw	1
1D	59517006	Hot Cartridge	1	10	59738002	Spring (Right)	1
1E	300597001	Stop Body	1	11	59738001	Spring (Left)	1
1F	62334001	Escutcheon	1	12	59742001	Screw	2
2	59748001	Gasket	1	13	80428002	Pedal (Hot)	1
3	60751003	Adaptor	2	14	80428003	Pedal (Cold)	1
4	60752001	Nut	2	15	60749001	Set Screw	2
5	61817001	1-1/2" Flat Head Wood Screw	2	16	92345001	10-32 Screw	2
6	G67961	Body Assembly	1				