

# AQUASPEC<sup>®</sup> FAUCETS

MODEL - Z84200 SERIES  
SINK FAUCET



## TECHNICAL INFORMATION

---

**FLOW:** 2.2 GPM [8.3 L] PRESSURE COMPENSATING AERATOR \*

**MAXIMUM PRESSURE:** 125 PSI

**MAXIMUM TEMPERATURE:** 160° F

**HANDLE NUT TORQUE:** 15-20 FT - LBS.

**CARTRIDGE STYLE:** QUARTER TURN CERAMIC DISK

\* OTHER AERATORS AVAILABLE BY REQUEST

---

## INSTALLATION INSTRUCTIONS

1. 1/2" IP NIPPLE SHOULD PROTRUDE 3/8" FROM THE FINISHED WALL. ON 8" CENTERS, PIPES SHOULD BE SECURED TO SUPPORT THE FAUCET.
  2. SCREW SUPPLY ARM ASSEMBLY (ITEM #5), ONTO PIPE. POSITION SUPPLIES SO THAT THE BODY CONNECTIONS END UP AT 8" CENTERS ON A HORIZONTAL PLANE.
  3. INSERT SINK FAUCET BODY (ITEM #4) TO SUPPLY ARMS PLACING GASKET (ITEM #5A) BETWEEN BODY AND SUPPLY ARM.
  4. ASSEMBLE SPOUT TO BODY USING HARDWARE.
  5. TURN WATER SUPPLY ON AND OPERATE FAUCET CHECKING FOR LEAKS.
  6. IT MAY BE NECESSARY TO SHUT WATER OFF AND REMOVE CARTRIDGES TO CLEAN SUPPLY LINES. CARTRIDGES CAN BE REMOVED BY FIRST REMOVING THE HANDLES. COLOR INDEXES CAN BE REMOVED BY INSERTING A PIN INTO THE HOLE ON THE UNDERSIDE OF THE HANDLE. AFTER THE HANDLES HAVE BEEN REMOVED UNSCREW THE HANDLE NUTS AND PULL OUT ON THE CARTRIDGE. ZURN WILL SUPPLY HANDLE PORT PLUGS (ZURN PART #61094001) AT YOUR REQUEST.
  7. REPLACE CARTRIDGES IN BODY AND HAND TIGHTEN HANDLE NUTS. PLACE HANDLES ON THE CARTRIDGE STEM AND LOCATE THEM AS DESIRED. TIGHTEN HANDLE NUTS.
  8. REPLACE HANDLE SCREWS AND COLOR INDEX BUTTON.
  9. INSTALL AERATOR INTO FAUCET AND HAND TIGHTEN. IT MAY BE NECESSARY TO UNSCREW AND CLEAN AERATOR AT START-UP.
- 

**CAUTION-FOR INSTALLATIONS WITH ATMOSPHERIC VACUUM BREAKERS (AVB'S).** THIS DEVICE SHOULD NEVER BE USED IN INSTALLATIONS THAT ARE UNDER CONTINUOUS PRESSURE WHEN INSTALLED WITH SPOUTS HAVING ATMOSPHERIC VACUUM BREAKERS (AVB'S). THEREFORE, NEVER PLACE A SELF-CLOSING, SHUT-OFF VALVE DOWN-STREAM OF AN AVB.

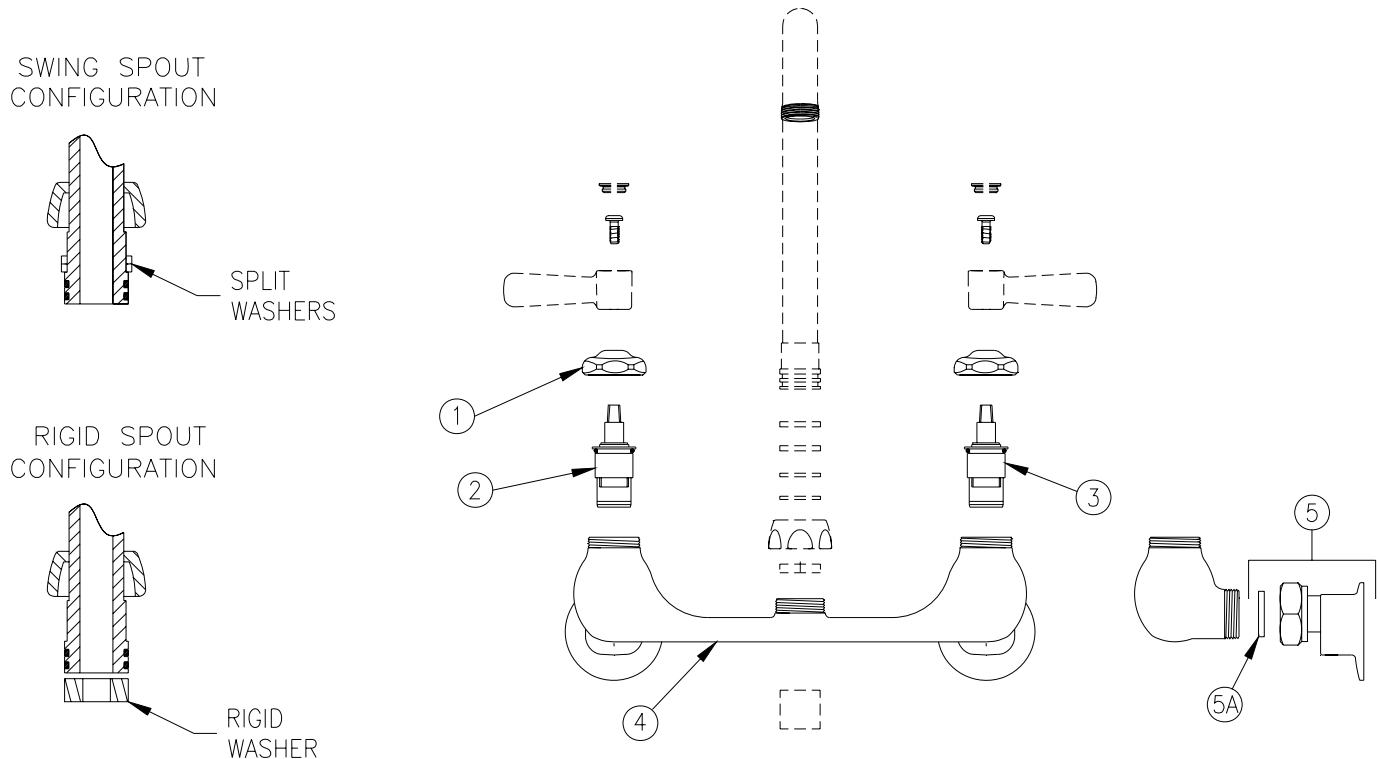
# MAINTENANCE

1. YOUR ZURN AQUASPEC FAUCET HAS A HIGHLY POLISHED NICKEL CHROME PLATED FINISH. CLEAN WITH SOAP AND WATER OR A MILD CLEANER WHICH IS SAFE FOR CHROME PLATING. DO NOT USE ACIDS OR TOILET BOWL CLEANER AS THEY WILL DAMAGE THE FINISH.
2. AQUASPEC FAUCETS CONTAIN CERAMIC DISK CARTRIDGES WHICH REQUIRE NO MAINTENANCE. TO REMOVE THE CARTRIDGE, SHUT THE WATER OFF, LOOSEN THE HANDLE NUTS AND PULL UP ON THE CARTRIDGE.

# REPLACEMENT PARTS

COLD WATER CARTRIDGE	59517001
HOT WATER CARTRIDGE	59517002
INDEX BUTTONS	G60500

## Z842A1 PICTURED



### Z84200 PARTS LIST

ITEM		QTY
1	59440001 HANDLE NUT	2
2	59517002 SHORT HOT CARTRIDGE	1
3	59517001 SHORT COLD CARTRIDGE	1
4	59463001 SINK BODY	1
5	G65336 SHORT SUPPLY ARM ASS'Y.	2
5A	59748001 GASKET	2