

# AQUASPEC<sup>®</sup> FAUCETS

MODEL - Z80300 SERIES  
WALL MOUNTED SINGLE METERING FAUCET



## TECHNICAL INFORMATION

---

**FLOW:** 0.25 GPC MAXIMUM; PRESET AT FACTORY TO 10 TO 15 SECONDS @ 80 PSI ADJUSTABLE

**MAXIMUM PRESSURE:** 80 PSI

**MAXIMUM TEMPERATURE:** 140°F

OPERATION - MINIMUM HAND PRESSURE TO START 5 POUND-FORCE, MAXIMUM PRESSURE 80 POUND FORCE.

CARTRIDGE STYLE - ZURN METERING CARTRIDGE

---

**IMPORTANT** THE WATER SUPPLY LINES MUST BE THOROUGHLY FLUSHED BEFORE INSTALLATION TO PREVENT FOREIGN MATTER AND DEBRIS FROM CLOGGING AND/OR DAMAGING INTERNAL COMPONENTS

---

**⚠ WARNING:** Cancer and Reproductive Harm - [www.P65Warnings.ca.gov](http://www.P65Warnings.ca.gov)

**⚠ ADVERTENCIA:** Cáncer y daño reproductivo - [www.P65Warnings.ca.gov](http://www.P65Warnings.ca.gov)

**⚠ AVERTISSEMENT:** Cancer et effets néfastes sur la reproduction - [www.P65Warnings.ca.gov](http://www.P65Warnings.ca.gov)

---

## \* INSTALLATION INSTRUCTIONS

1. THE WATER SUPPLY LINE MUST BE THOROUGHLY FLUSHED BEFORE FAUCET INSTALLATION.
2. REMOVE FAUCET BODY FROM CARTON AND MOUNT TO 1/2" NPT FITTING.
3. TURN SUPPLY WATER ON AND OPERATE THE FAUCET WHILE CHECKING FOR LEAKS
4. INSTALL AERATOR ADAPTOR (#5) AND AERATOR (#6) INTO FAUCET AND HAND TIGHTEN.
5. METERING CARTRIDGE IS FACTORY PRESET FOR A 10 TO 15 SECOND CYCLE AT 80 PSI, IF ADJUSTMENT IS NECESSARY, SEE "ADJUSTING THE CYCLE TIME" SECTION (PAGE 2).

# MAINTENANCE

---

1. YOUR ZURN AQUASPEC FAUCET HAS A HIGHLY POLISHED NICKEL CHROME PLATED FINISH. CLEAN WITH SOAP AND WATER OR A MILD CLEANER WHICH IS SAFE FOR CHROME PLATING. DO NOT USE ACIDS OR TOILET BOWL CLEANER AS THEY WILL DAMAGE THE FINISH.
2. METERING CARTRIDGE (#3) REMOVAL AND REPLACEMENT (SEE SERVICE VIDEO AT [WWW.ZURN.COM/OPERATIONS/AQUASPEC/PAGES/SERVICEVIDEOMENU.ASP](http://WWW.ZURN.COM/OPERATIONS/AQUASPEC/PAGES/SERVICEVIDEOMENU.ASP))
  - 2.1. REMOVE COLORED INDEX BUTTON (#1C) FROM HANDLE (#1A)
  - 2.2. LOOSEN SET SCREW (#1B) IN HANDLE WITH 3/32" ALLEN WRENCH
  - 2.3. PULL UP ON HANDLE TO REMOVE FROM STEM (#2C) OF HANDLE NUT ASSEMBLY (#2)
  - 2.4. REMOVE HANDLE NUT ASSEMBLY (#2) USING 1-1/8" HEX 6-POINT SOCKET
  - 2.5. REMOVE METERING CARTRIDGE (#3) BY LIFTING OUT OF FAUCET BODY (#4). IT MAY BE NECESSARY TO OPEN THE SUPPLY STOP SLIGHTLY TO ALLOW WATER PRESSURE TO PUSH THE METERING CARTRIDGE UPWARD.
  - 2.6. INSPECT METERING CARTRIDGE (#3) FOR WORN PARTS, DAMAGED PARTS AND ANY CONTAMINATION THAT MAY BE PREVENTING THE METERING CARTRIDGE FROM MOVING FREELY OR SEATING. OTHER THAN CLEANING ANY TRAPPED DEBRIS, THERE ARE NO SERVICEABLE PARTS IN THE METERING CARTRIDGE. CONTAMINATED OR DAMAGED METERING CARTRIDGE ASSEMBLIES SHOULD BE REPLACED.
  - 2.7. REVERSE STEPS 2.1 THROUGH 2.5 FOR RE-ASSEMBLY. METERING CARTRIDGE (#3) WILL SIT SLIGHTLY ABOVE BODY (#4) PRIOR TO MOUNTING OF HANDLE NUT ASSEMBLY. TIGHTEN CAP (#2F) WITH 1-1/8" HEX 6-POINT SOCKET UNTIL NO WATER IS LEAKING FROM UNDER THE HANDLE NUT ASSEMBLY WHEN THE FAUCET IS RUNNING. HOLD DOWN HANDLE (#1A) WHILE TIGHTENING SET SCREW (#1B) TO ENSURE PROPER SEATING

---

## ADJUSTING THE CYCLE TIME ON ZURN METERING FAUCET

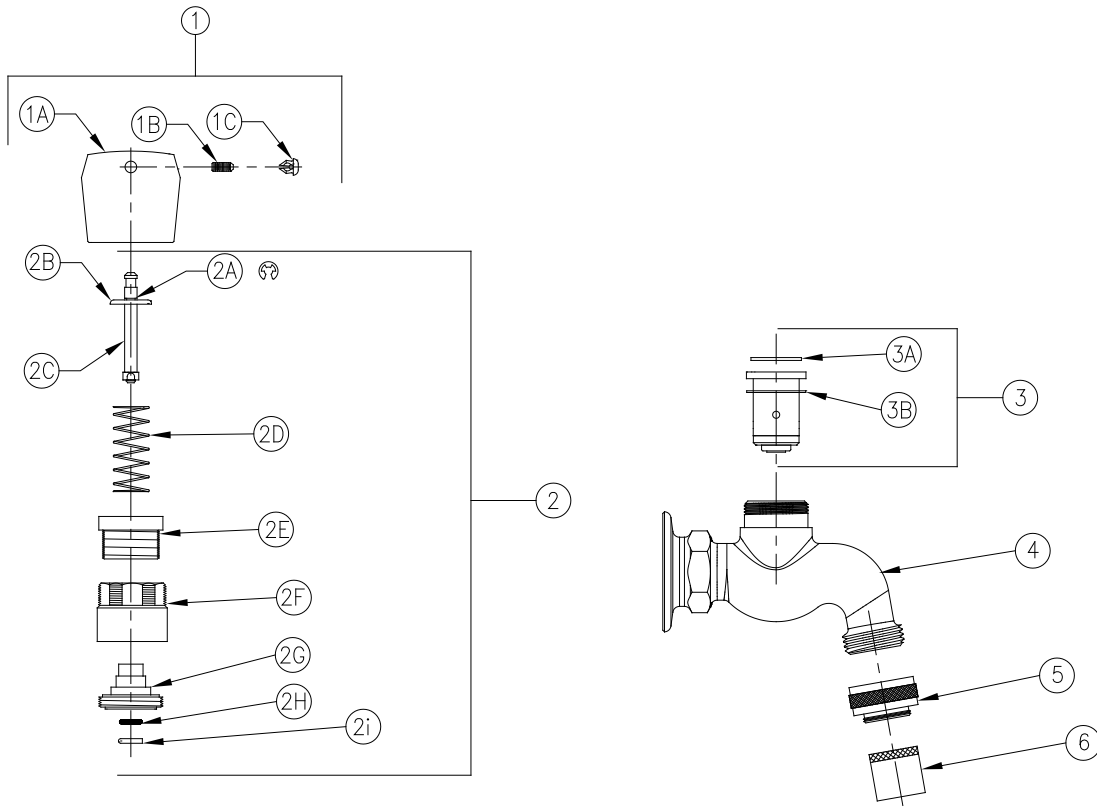
(SEE SERVICE VIDEO AT [WWW.ZURN.COM/OPERATIONS/AQUASPEC/PAGES/SERVICEVIDEOMENU.ASP](http://WWW.ZURN.COM/OPERATIONS/AQUASPEC/PAGES/SERVICEVIDEOMENU.ASP))

1. METERING FAUCETS ARE FACTORY PRESET FOR A 10 TO 15 SEC. CYCLE AT 80 PSI.
2. ACTUATE FAUCET 3 TO 5 TIMES TO REMOVE ANY TRAPPED AIR IN THE SUPPLY LINE OR FAUCET
3. REMOVE HANDLE (#1) PER INSTRUCTIONS IN MAINTENANCE SECTION 2.1 THROUGH 2.3 TO EXPOSE ADJUSTMENT NUT (#2E)
4. INCREASE CYCLE TIME BY TIGHTENING ADJUSTMENT NUT (#2E) 1/2 TURN CLOCKWISE. DECREASE CYCLE TIME BY LOOSENING ADJUSTMENT NUT 1/2 TURN COUNTERCLOCKWISE. CHECK FOR DESIRED CYCLE TIME BY ACTUATING FAUCET WITH HANDLE (#1) IN PLACE ON STEM (#2C)

## REPLACEMENT PARTS

HANDLE NUT ASSEMBLY	G60561
METERING CARTRIDGE ASSEMBLY	G61754
HANDLE ASSEMBLY	G60522

\* Installation Instructions are revised frequently.  
Please access website for the latest revision.



### Z80300 PICTURED

Item	Part Number	Description	Qty.
1	G60522	Metering Handle Assembly	1
1A	60601003	Metering Handle	1
1B	62705001	Set Screw	1
1C	G60558	Metering Index Buttons H, C, T	1
	60460001	Hot Index	1
	60460002	Cold Index	1
	60460003	Tempered Index	1
2	G60561	Handle Nut Assembly	1
2A	60465001	E-Ring	1
2B	60464001	Spring Seat	1
2C	60451003	Stem	1
2D	60447001	Spring	1
2E	60446001	Adjustment Nut	1
2F	60452001	Cap	1
2G	60456001	Stem Housing	1
2H	62499107	O-Ring	1
2I	60458001	O-Ring Retainer	1
3	G61754	Valve Sleeve/Poppet Assembly	1
3A	58155020	O-Ring	1
3B	81241001	Washer	1
4	61676002	Body, Single Flanged Wall Sink	1
5	63310001	Aerator Adaptor	1
6	60440001	0.5 GPM [1.9L] Vandal-Resistant Pressure Compensating Spray Outlet	1

## **METERING FAUCET TROUBLE SHOOTING GUIDE**

<b>Problem</b>	<b>Cause</b>	<b>Solution</b>
No water dispensing from faucet.	Supply stops not open.	Open supply stops.
	Spray outlet (item 6) contaminated.	Remove spray outlet (item 6) to clean and/or replace.
	Filter assembly (item 4) contaminated.	Shut off water supply. Remove filter assembly to clean and/or replace. Filter located internally within faucet body under metering cartridge.
Faucet is shutting off too quickly	Timing nut (item 2E) requires adjustment.	Remove handle (item 1) using 3/32" Allen wrench. Rotate timing nut (item 2E) down (CW) to lengthen handle stroke and increase cycle time.
	Metering cartridge (item #3) is damaged.	Replace metering cartridge (item 3) <a href="#">G61754</a> per Installation and Maintenance guide, page 2
Faucet is running too long or will not shut off	Timing nut (item 2E) requires adjustment.	Remove handle (item 1) using 3/32" Allen wrench. Rotate timing nut (item 2E) up (CCW) to shorten handle stroke and decrease cycle time.
	Metering cartridge (item 3) is overly contaminated or damaged.	Replace metering cartridge (item 3) <a href="#">G61754</a> per Installation and Maintenance guide, page 2
	Spray outlet (item 6) is not installed or incorrect spray outlet (item 6) installed.	Install 1.0 GPM or 0.5 GPM spray outlet (item 6). Faucet may not shut off with flow rate > 1.0 GPM.
	Handle nut (item 2) is not adequately tightened	Tighten handle nut (item 2) using 1-1/8" hex 6 point socket to create seal and seat metering cartridge. Do not over tighten.