

AQUASPEC[®] FAUCETS



MODEL - Z7150-SSC TEMP-GARD SERIES
ON/OFF SHOWER VALVE FOR TEMPERED WATER

TECHNICAL INFORMATION

MAXIMUM PRESSURE: 125 PSI

MAXIMUM TEMPERATURE: 180°F

HANDLE NUT TORQUE: 15-20 FT-LBS

CARTRIDGE STYLE: QUARTER TURN CERAMIC DISK

⚠ WARNING: Cancer and Reproductive Harm - www.P65Warnings.ca.gov

⚠ ADVERTENCIA: Cáncer y daño reproductivo - www.P65Warnings.ca.gov

⚠ AVERTISSEMENT: Cancer et effets néfastes sur la reproduction - www.P65Warnings.ca.gov

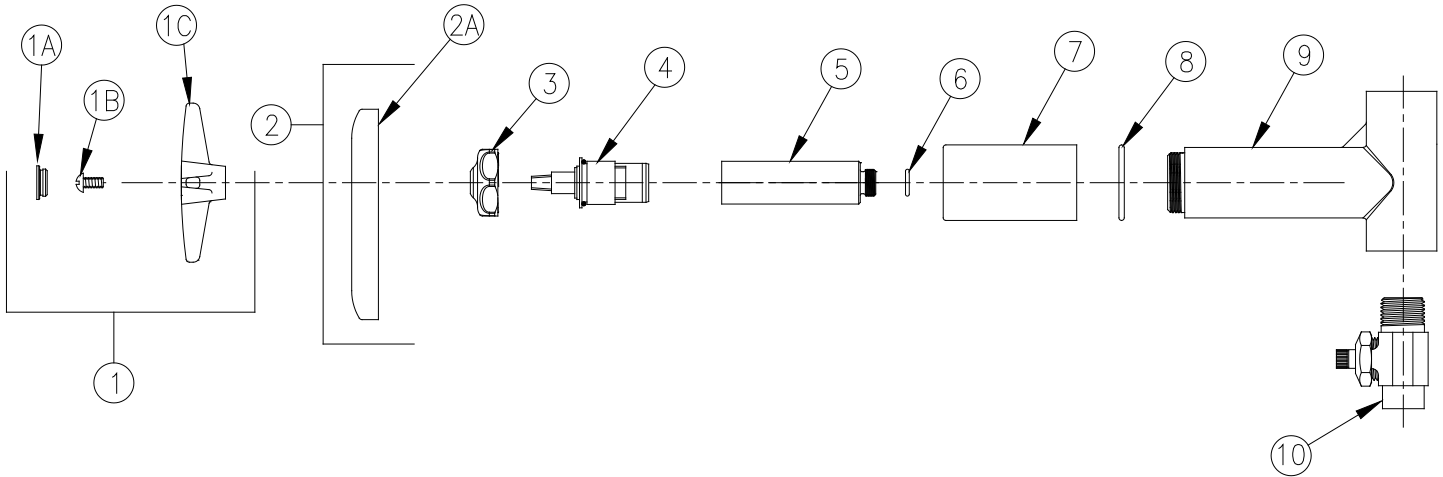
INSTALLATION INSTRUCTIONS

1. FLUSH SUPPLY LINES PRIOR TO INSTALLING VALVE TO REMOVE DEBRIS.
 2. FASTEN VALVE BODY AND SERVICE STOP TO PIPING BY APPROPRIATE MEANS.
 3. TURN SUPPLY WATER ON AND OPERATE VALVE CHECKING FOR LEAKS.
 4. IT MAY BE NECESSARY TO SHUT WATER OFF AND REMOVE CARTRIDGE TO CLEAN SUPPLY LINE. CARTRIDGE CAN BE REMOVED BY FIRST REMOVING THE HANDLE. COLOR INDEXES CAN BE REMOVED BY INSERTING A PIN INTO THE HOLE ON THE UNDERSIDE OF THE HANDLE. AFTER THE HANDLE HAS BEEN REMOVED, UNSCREW THE HANDLE NUT AND PULL UP ON THE CARTRIDGE.
 5. REPLACE CARTRIDGE IN BODY AND HAND TIGHTEN HANDLE NUT. PLACE HANDLE ON THE CARTRIDGE STEM AND LOCATE AS DESIRED. TIGHTEN HANDLE NUT TO 15-20 FT-LBS OF TORQUE.
 6. REPLACE HANDLE SCREW AND COLOR INDEX BUTTON.
-

MAINTENANCE

1. THIS TEMP-GARD VALVE CONTAINS A CERAMIC DISK CARTRIDGE WHICH REQUIRES NO MAINTENANCE. TO REMOVE THE CARTRIDGE, SHUT THE WATER OFF, REMOVE THE HANDLE NUT AND PULL UP ON THE CARTRIDGE.

Z7150-SSC PICTURED



Z7150-SSC PARTS LIST

Item	Part Number	Description	Qty.
1	G61072	Single Four Arm Handle	1
1A	G60548	Hot/Cold Color-coded Indexes	1
	59454001	Red Index	1
	59454002	Blue Index	1
	59454003	Black Index	1
1B	62464001	10-32 Screw	1
1C	59518001	Four Arm Handle	1
2	G61999	Shower Valve Escutcheon	1
2A	61586001	Tear Drop Wall Escutcheon	1
3	59440001	Handle Nut	1
4	59517001	Cold Short Cartridge	1
5	61473001	Shower Inlet	1
6	58155012	O-Ring	1
7	61524001	Shower Valve Sleeve	1
8	58155024	O-Ring	1
9	62403001	Shower Valve Body	1
10	7130-50AC	Copper Sweat Service Stop	1