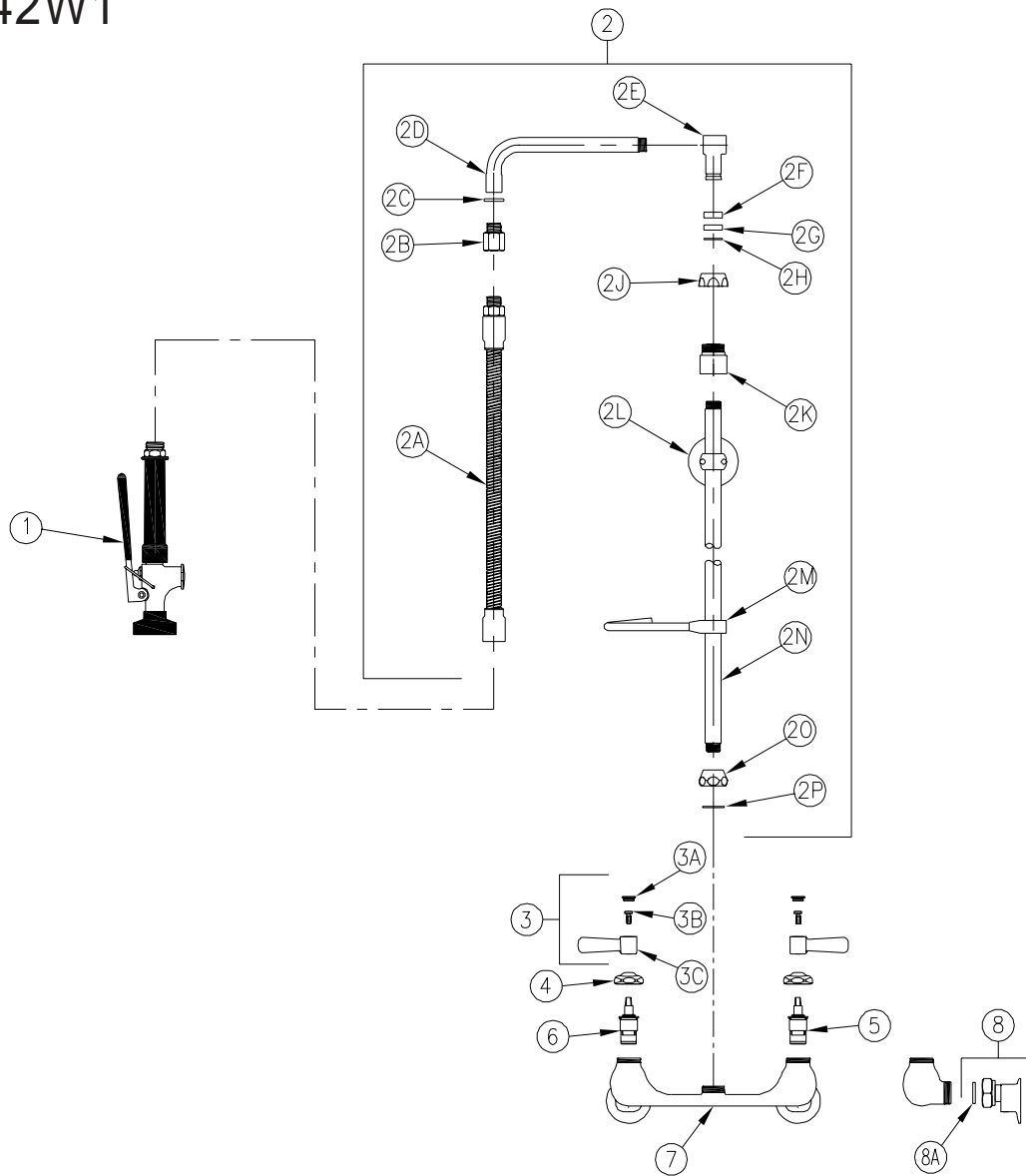


PRE-RINSE

Z842W1



Item	Part Number	Description	Qty.	Item	Part Number	Description	Qty.
1	Z80000-PR1	Pre-Rinse Unit	1	2N	61917044	Riser Tube	1
2	Z800W0	'W' Spout Pre-Rinse Assembly	1	2O	61699001	Adaptor, Riser Inlet	1
2A	61704036	Stainless Steel Hose	1	2P	69974001	Gasket	1
2B	62762001	Swing Arm Adaptor	1	3	G60501	2-1/2" [64mm] Lever Handles	1
2C	58155015	O-Ring	1	3A	G60500	Hot/Cold Color-Coded Indexes	1
2D	60811003	Spout	1		59454001	Hot Index	1
2E	59662002	Inlet Adaptor	1		59454002	Cold Index	1
2F	59441001	Bearing Washer	1	3B	62464001	10-32 Screw	2
2G	59459001	Spout Seal	1	3C	59487001	Lever Handle	2
2H	59460001	Retaining Ring	1	4	59440001	Handle Nut	2
2J	59435001	Spout Nut	1	5	59517001	Short Cold Cartridge	1
2K	61700001	Riser Outlet Adaptor	1	6	59517002	Short Hot Cartridge	1
2L	Z80000-RS	Pre-Rinse Pipe Support	1	7	59463001	Sink Body	1
2M	Z80000-PSH	Hook and Screw	1	8	G63347	Short Supply Arm Ass'y w/Check Stop	2
				8A	59748001	Gasket	2

ZURN INDUSTRIES, INC. ♦ COMMERCIAL BRASS OPERATION ♦ 2640 SOUTH WORK STREET ♦ FALCONER NY 14733

Phone: 1-716-665-1132 ♦ Fax: 1-716-665-1135 ♦ World Wide Web: www.zurn.com

In Canada: ZURN INDUSTRIES LIMITED ♦ 3544 Nashua Drive ♦ Mississauga, Ontario L4V1L2 ♦ Phone: 905/405-8272 Fax: 905/405-1292