



www.Source1Parts.com

**CF SERIES
FULL CASED COIL
ALUM FLEX COIL MODELS (STYLE A)**

HVAC SERVICE PARTS

Supersedes: 035-24197-001 Rev. A (0615)

035-24197-001 Rev. B (0915)

1 of 4

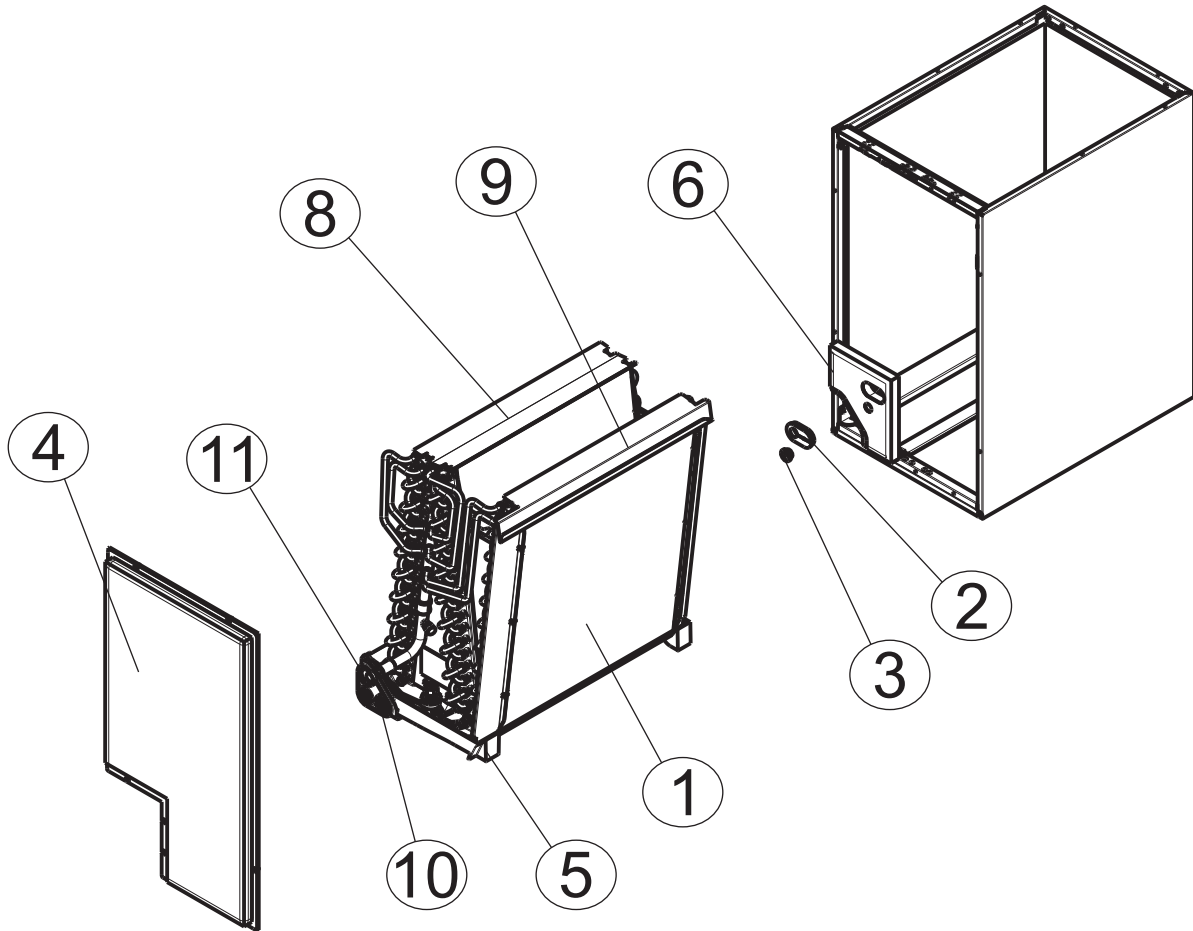


Figure 1 : FULL CASED COIL - ALUM FLEX COIL

ITEM	DESCRIPTION	CF18AXA1A	CF18BXA1A	CF24AXA1A	CF24BXA1A
1	Coil w/Drain Pan	S1-37339406005	S1-37339406006	S1-37339406007	S1-37339406008
2	Gasket, Oval	S1-02817078000	S1-02817078000	S1-02817077000	S1-02817077000
3	Grommet, Liquid Line	S1-02813209000	S1-02813209000	S1-02813209000	S1-02813209000
4	Assy, Lower Access Panel	S1-37339402001	S1-37339402004	S1-37339402001	S1-37339402004
5	Pan, Drain	S1-02817096000	S1-02817091000	S1-02817090000	S1-02817091000
6	Panel, Tubing Access	S1-37339403001	S1-37339403001	S1-37339403001	S1-37339403001
7					
8	Shield, Blow-off, LH	S1-07339408003	S1-07339408003	S1-07339408003	S1-07339408003
9	Shield, Blow-off, RH	S1-07339408001	S1-07339408001	S1-07339408001	S1-07339408001
10	Plug, Drain Pan (2 Req'd)	S1-02812480000	S1-02812480000	S1-02812480000	S1-02812480000
11	Gasket, Drain Pan	S1-02817104000	S1-02817104000	S1-02817104000	S1-02817104000
12*	Assy, Liquid Line	S1-02322469000	S1-02322464000	S1-02322469000	S1-02322464000

NOTE: *Not Shown
 New replacement parts shown in **bold** face type at the first printing of parts list dated 9/15
 Major components and suggested stocking items are shown with shaded item number.
 "<" Across from row indicates a change in that row.
 --- Not applicable to specified model.



ITEM	DESCRIPTION	CF24CXA1A	CF30AXA1A	CF30BXA1A	CF30CXA1A
1	Coil w/Drain Pan	S1-37339406009	S1-37339406013	S1-37339406014	S1-37339406015
2	Gasket, Oval	S1-02817077000	S1-02817077000	S1-02817077000	S1-02817077000
3	Grommet, Liquid Line	S1-02813209000	S1-02813209000	S1-02813209000	S1-02813209000
4	Assy, Lower Access Panel	S1-37339402007	S1-37339402002	S1-37339402005	S1-37339402008
5	Pan, Drain	S1-02817092000	S1-02817090000	S1-02817091000	S1-02817092000
6	Panel, Tubing Access	S1-37339403001	S1-37339403001	S1-37339403001	S1-37339403001
7					
8	Shield, Blow-off, LH	S1-07339408003	S1-07339408003	S1-07339408003	S1-07339408003
9	Shield, Blow-off, RH	S1-07339408001	S1-07339408001	S1-07339408001	S1-07339408001
10	Plug, Drain Pan (2 Req'd)	S1-02812480000	S1-02812480000	S1-02812480000	S1-02812480000
11	Gasket, Drain Pan	S1-02817104000	S1-02817104000	S1-02817104000	S1-02817104000
12*	Assy, Liquid Line	S1-02322469000	S1-02322471000	S1-02322465000	S1-02322470000

ITEM	DESCRIPTION	CF30DXA1A	CF36AXA1A	CF36BXA1A	CF36CXA1A
1	Coil w/Drain Pan	S1-37339406016	S1-37339406017	S1-37339406018	S1-37339406019
2	Gasket, Oval	S1-02817077000	S1-02817077000	S1-02817077000	S1-02817077000
3	Grommet, Liquid Line	S1-02813209000	S1-02813209000	S1-02813209000	S1-02813209000
4	Assy, Lower Access Panel	S1-37339402013	S1-37339402002	S1-37339402006	S1-37339402009
5	Pan, Drain	S1-02817093000	S1-02817090000	S1-02817091000	S1-02817092000
6	Panel, Tubing Access	S1-37339403001	S1-37339403001	S1-37339403001	S1-37339403001
7					
8	Shield, Blow-off, LH	S1-07339408003	S1-07339408003	S1-07339408003	S1-07339408003
9	Shield, Blow-off, RH	S1-07339408001	S1-07339408001	S1-07339408001	S1-07339408001
10	Plug, Drain Pan (2 Req'd)	S1-02812480000	S1-02812480000	S1-02812480000	S1-02812480000
11	Gasket, Drain Pan	S1-02817104000	S1-02817104000	S1-02817104000	S1-02817104000
12*	Assy, Liquid Line	S1-02322463000	S1-02322471000	S1-02322465000	S1-02322470000

ITEM	DESCRIPTION	CF36DXA1A	CF42BXA1A	CF42CXA1A	CF42DXA1A
1	Coil w/Drain Pan	S1-37339406020	S1-37339406021	S1-37339406022	S1-37339406023
2	Gasket, Oval	S1-02817077000	S1-02817077000	S1-02817077000	S1-02817077000
3	Grommet, Liquid Line	S1-02813209000	S1-02813209000	S1-02813209000	S1-02813209000
4	Assy, Lower Access Panel	S1-37339402013	S1-37339402006	S1-37339402010	S1-37339402014
5	Pan, Drain	S1-02817093000	S1-02817097000	S1-02817092000	S1-02817093000
6	Panel, Tubing Access	S1-37339403001	S1-37339403001	S1-37339403001	S1-37339403001
7					
8	Shield, Blow-off, LH	S1-07339408003	S1-07339408003	S1-07339408003	S1-07339408003
9	Shield, Blow-off, RH	S1-07339408001	S1-07339408001	S1-07339408001	S1-07339408001
10	Plug, Drain Pan (2 Req'd)	S1-02812480000	S1-02812480000	S1-02812480000	S1-02812480000
11	Gasket, Drain Pan	S1-02817104000	S1-02817104000	S1-02817104000	S1-02817104000
12*	Assy, Liquid Line	S1-02322463000	S1-02322465000	S1-02322470000	S1-02322463000

NOTE: *Not Shown

New replacement parts shown in **bold** face type at the first printing of parts list dated 9/15

Major components and suggested stocking items are shown with shaded item number.

"<" Across from row indicates a change in that row.

--- Not applicable to specified model.



ITEM	DESCRIPTION	CF48CXA1A	CF48DXA1A	CF60CXA1A	CF60DXA1A
1	Coil w/Drain Pan	S1-37339406024	S1-37339406025	S1-37339405003	S1-37339405004
2	Gasket, Oval	S1-02817077000	S1-02817077000	S1-02817077000	S1-02817077000
3	Grommet, Liquid Line	S1-02813209000	S1-02813209000	S1-02813209000	S1-02813209000
4	Assy, Lower Access Panel	S1-37339402011	S1-37339402015	S1-37339402011	S1-37339402015
5	Pan, Drain	S1-02817092000	S1-02817093000	S1-02817092000	S1-02817093000
6	Panel, Tubing Access	S1-37339403001	S1-37339403001	S1-37339403001	S1-37339403001
7					
8	Shield, Blow-off, LH	S1-07339408003	S1-07339408003	S1-07339408003	S1-07339408003
9	Shield, Blow-off, RH	S1-07339408001	S1-07339408001	S1-07339408001	S1-07339408001
10	Plug, Drain Pan (2 Req'd)	S1-02812480000	S1-02812480000	S1-02812480000	S1-02812480000
11	Gasket, Drain Pan	S1-02817104000	S1-02817104000	S1-02817104000	S1-02817104000
12*	Assy, Liquid Line	S1-02322470000	S1-02322463000	S1-02322470000	S1-02322463000

ITEM	DESCRIPTION	CF64DXA1A			
1	Coil w/Drain Pan	S1-37339406026			
2	Gasket, Oval	S1-02817077001			
3	Grommet, Liquid Line	S1-02813209000			
4	Assy, Lower Access Panel	S1-37339402015			
5	Pan, Drain	S1-02817101000			
6	Panel, Tubing Access	S1-37339403001			
7					
8	Shield, Blow-off, LH	S1-07339408004			
9	Shield, Blow-off, RH	S1-07339408002			
10	Plug, Drain Pan (2 Req'd)	S1-02812480000			
11	Gasket, Drain Pan	S1-02817104000			
12*	Assy, Liquid Line	S1-02322463000			

NOTE: *Not Shown
 New replacement parts shown in **bold** face type at the first printing of parts list dated 9/15
 Major components and suggested stocking items are shown with shaded item number.
 "<" Across from row indicates a change in that row.
 --- Not applicable to specified model.



TO ORDER AUTHORIZED FACTORY REPLACEMENT PARTS - Contact your Source1 HVAC Parts Distributor or visit our website at **www.Source1Parts.com** for a Distributor and Dealer listing.

Subject to change without notice. Published in U.S.A.
Copyright © 2015 by Johnson Controls Inc. All rights reserved.

035-24197-001 Rev. B (0915)
Supersedes: 035-24197-001 Rev. A (0615)

York International Corp.
5005 York Drive
Norman, OK 73069