



MODEL JJ850D



FEATURES:

- Revolving “Pretzel Tree” or adjustable racks available.
- All Stainless Steel.
- Tempered glass sides and door.
- Easy to fill water reservoir.
- Single on/off power switch.
- Water level full and low indicating lights.
- Auto controlled humidity.
- Thermostatically controlled heat.

ICEE SERVICE:

EMAIL: servicecall@icee.com
PHONE: 800-423-3872

ELECTRICAL DATA:

VOLTS:	120	AMPS:	8.9	WATTS:	1070
--------	-----	-------	-----	--------	------

- Best when operated on an individual branch circuit
- Approx. 70” power cord length

DIMENSIONS:

- 19” W x 20” D x 32” H

SHIPPING INFORMATION:

- SHIPPING DIMENSIONS: 26” W x 26” D x 41” H
 - SHIPPING WEIGHT: 90 lbs.
- MUST SHIP VIA FREIGHT TRUCK**



FP140240 REV: ORIG

EQUIPMENT SETUP:

- Use only 40 watt teflon coated light bulbs supplied with unit.
- Screw these two bulbs into the sockets in ceiling of the warming chamber.
- Remove tape from collar located at the top end of pretzel tree or from four corners of rack (if applicable) Tape for Shipping Only.

CLEANING INSTRUCTIONS:

- **DISCONNECT WARMER FROM POWER SUPPLY BEFORE ANY CLEANING OR SERVICING. FAILURE TO DO SO MAY CAUSE HARM.**
- To maintain the luster of your stainless steel finish, do not use scouring powders on your warming merchandiser -- this may scratch the finish.
- Use only mild soap or good stainless steel cleaner daily to keep your warming merchandiser looking new.

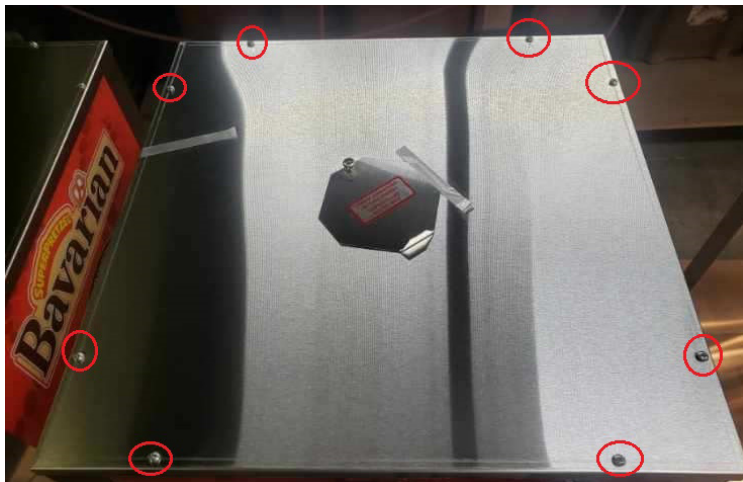
STORAGE & PREPERATION OF PRE-BAKED FROZEN SOFT PRETZELS

- **STORAGE:**
 - Store pretzels in **freezer** until ready to use.
- **SALTING:**
 - **Moisten** pretzels slightly by misting with a spray bottle. **Sprinkle salt** on moistened frozen pretzels or press face down into pan of salt.
- **DISPLAY:**
 - Place frozen pretzels into heated display case for thawing.
(Pretzels will be edible in approxiamately 20 minutes.)
- **AT TIME OF SALE:**
 - **WARM** pretzels can be consumed directly from the display case.
 - If consumer would like the soft pretzel **HOT** you can heat them in either a conventional over or micro-wave oven.
 - **Conventional Oven:** 1-2 minutes at 350-400 F
 - **Microwave Oven:** 20-40 seconds (Due to difference in microwave ovens and quantity of pretzels being heated, the amount of time may vary.)
- **IMPORTANT: DO NOT MICROWAVE OR HEAT PRETZEL AND THEN PUT IN DISPLAY CASE!**
(This will cause pretzel to get hard.)

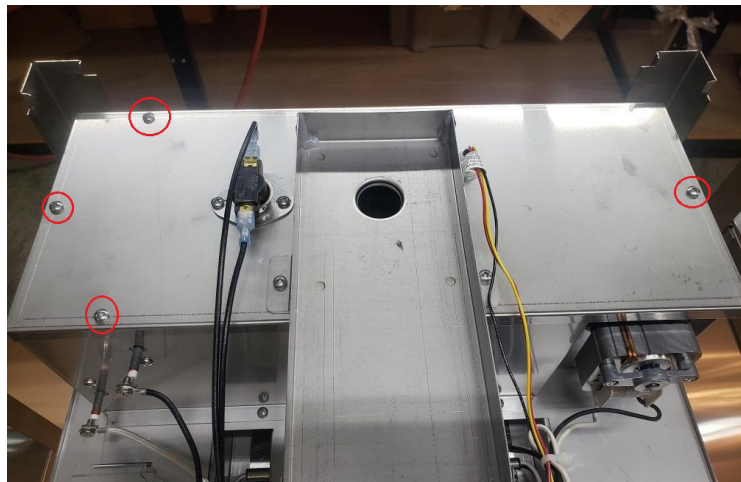
DESCRIPTION:

This document shows how to clean the water pan and float switch in the 695 and 850 models.

NOTE: UNPLUG UNIT BEFORE PREFORMING ANY MAINTENANCE.



Remove the 8 screws securing the top panel in place. Lift panel off the unit once screws are removed.



Remove 4 screws holding the air chamber cover in place. Remove cover once screws are removed.



Wipe the float switch clean with hot soapy water.



Remove pan, or clean in place with hot soapy water.

Once parts have been cleaned, place pan back into place. And assemble in reverse order. Once all parts are reinstalled you are ready for operation.

PARTS LIST:

MODEL JJ850D & JJ850D-RP

ITEM #	PART#	DESCRIPTION
1.	0020914	MOTOR SHAFT EXTENSION ROD
2.	0020901	ELECTRICAL BOX
3.	0017211	TERMINAL BLOCK
4.	0020900	ROTATING SIGN MOTOR
5.	0027182	40W COATED BULB
6.	0016307	LIGHT SOCKET ASSEMBLY
7.	0020902	LIGHT BOX
8.	0016428	10-32 X 3/8 BRASS THUMB SCREW
9.	0017201	COVER PLATE
10.	0020905	TOP CAP RP (0021143 - TOP CAP NON RP)
11.	0020919	ROTATING KIT ASSEMBLY
12.	0021137	SIDE PANEL
13.	0020911	AQUEDUCT RP (0021005 - AQUEDUCT NON RP)
14.	0017379	HI-LIMIT THERMOSTAT
15.	0021135	CHAMBER COVER
16.	00175	NUT
17.	0017593	WASHER SPACER
18.	0017351SK	LIQUID LEVEL SWITCH SERVICE KIT
19.	0017350	HUMIDITY TANK
20.	0018612	PRETZEL TREE
21.	0017270	CAROUSEL BUSHING (.40 DEPTH)
22.	0022309SK	BLOWER MOTOR
23.	0018631	BRACKET
24.	0018632	END COVER
25.	0021012	BLOWER MOTOR W/METAL SHROUD
26.	0021080	CORNER COLUMN WELDMENT
27.	0016428	10-32 X 3/8 BRASS THUMB SCREW
28.	0021117	SLIDE COLUMN
29.	0021121	DOOR SLIDE COLUMN
30.	0021085	RIGHT DOOR COLUMN
31.	0020943	ADJUSTABLE DOOR CLIP
32.	0016418	LIGHT SOCKET ASSEMBLY
33.	0017265	40W BULB
34.	0018656	3/16" CLEAR TEMPERED GLASS
35.	00448	CORD SET
36.	0017436	NYLON GLIDE

PARTS LIST:

MODEL JJ850D & JJ850D-RP

ITEM #	PART#	DESCRIPTION
37.	0021107	ELECTRONIC SHEILD
38.	0020935	DOOR ASSEMBLY
39.	0016024	STRAIN RELIEF
40.	0020912	HOLE PLUG
41.	0017306	DOOR SWITCH
42.	0020942	MAGNET ASSEMBLY
43.	0021075	CEILING CHAMBER WELDMENT
44.	0021027	COMPONENT PAN RIVET ASSY
45.	0017211	TERMINAL BLOCK
46.	0017442	PLATFORM
47.	0016546	FEMALE CONNECTOR (47/48 REPLACED BY 0016591)
48.	0016545	MALE CONNECTOR (47/48 REPLACED BY 0016591)
49.	0017596SK	GEAR MOTOR SERVICE KIT (INCL 0017331 FAN BLADE)
50.	0021145	HATCH PATCH
51.	0017331	FAN BLADE
52.	0021095	AIR CHAMBER WELDMENT
53.	0019577	800W HEATING ELEMENT
54.	0017354	HORIZONTAL DRUM THERMOMETER
55.	009092	PILOT LIGHT (RED)
56.	009093	PILOT LIGHT (GREEN)
57.	0016119	POWER SWITCH
58.	0017274	THERMOSTAT KNOB
59.	0017249	AIR THERMOSTAT
*	0018630	WIRE RACK
*	0018629	RACK HOLDER

