

FOOD WARMING/MERCHANDISING CABINET



MODEL-995-STEAM TABLE

The Model 995 Warmer/Merchandiser provides an ideal environment for promoting and preserving the freshness of soft pretzels, breaded products, vegetables, and other foods that require heat and humidity. Food is kept fresh and warm by moist air that is continuously circulated throughout the cabinet. Curved glass display and mirrored doors maximize product visibility.

FEATURES:

- (2) 75-watt Teflon coated light bulbs
- 22-gauge stainless steel base
- glass sides
- mirrored sliding glass doors

OPERATION:

The unit incorporates heat and humidity to hold product for maximum length of time. Air is moved throughout the cabinet by means of a fan, circulating the air over heated water pans in the bottom of the display case.

(See back page for installation)

CAPACITY:

Two 2-1/2" deep (63.5mm) full size steam table pans.
(Pans not included)

SPECIFICATIONS:

21" H, 31" Front to Back including control box
30-1/2" Right to Left
(see additional information on the back of this page)

ELECTRICAL:

120 Volts, 1500 Watts, 12.5 Amps
60Hz single phase, with 6 foot grounded power cord

SHIPPING WEIGHT: *Must ship via freight truck
The unit is palletized and shrink wrapped to the pallet.
Shipping wgt. Is 180 lbs. and the shipping dimensions are
48" x 42" x 30"



An ISO 9001 Company

FP140033-M
03/13

WISCO INDUSTRIES®

P.O. BOX #10
OREGON, WI 53575
PHONE: 608-835-3106
FAX: 608-835-8273
www.thepizzaoven.biz

LIMITED WARRANTY:

Wisco Industries, Inc. expressly warrants the product will be free from defects in workmanship and materials for a period of 1 year from the date of shipment. WISCO DISCLAIMS AND EXCLUDES ANY AND ALL OTHER EXPRESS OR IMPLIED WARRANTIES, INCLUDING WITHOUT LIMITATION, ANY AND ALL WARRANTIES OF MERCHANTABILITY OR FITNESS FOR A PARTICULAR PURPOSE.

Buyer agrees that its SOLE AND EXCLUSIVE REMEDY against Wisco and Wisco's SOLE AND EXCLUSIVE LIABILITY arising out of any defect or nonconformity in the product shall be replacement/exchange of such nonconforming countertop food service equipment at Wisco's expense. No countertop food service equipment shall be returned without Wisco's consent. IT IS AGREED THAT WISCO'S MAXIMUM LIABILITY SHALL NOT IN ANY CASE EXCEED THE SALE PRICE FOR THE COUNTERTOP EQUIPMENT CLAIMED TO BE DEFECTIVE OR NONCONFORMING.

MODEL 995 Heated Display Cabinet

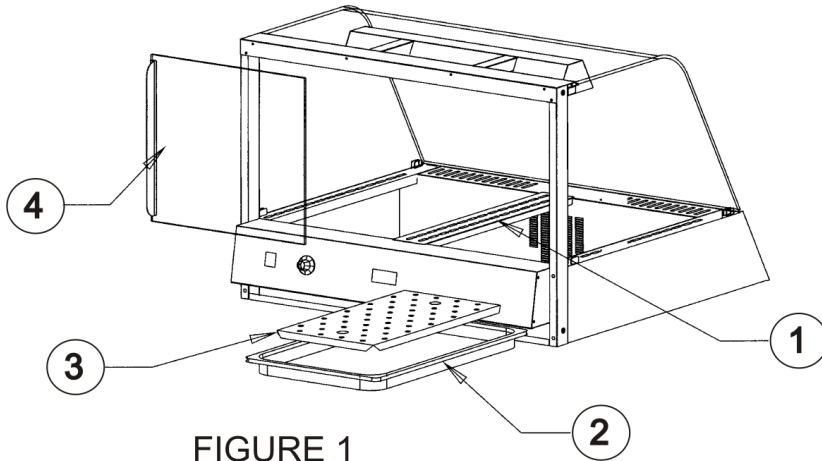


FIGURE 1

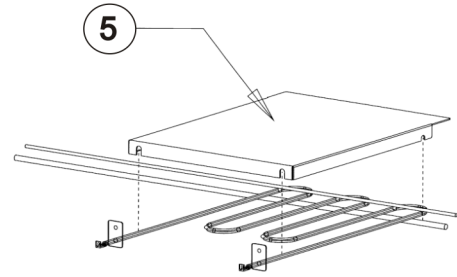


FIGURE 2

GENERAL INFORMATION

The heated display case attractively displays your food products and maintains them at ready-to-eat temperatures. A convection fan circulates heat throughout the entire display cabinet. Water trays extend food holding items by reducing moisture loss. Sliding glass doors help retain heat while providing access to the food.

ITEM	PART NO.	DESCRIPTION	QTY
1	0018779	Pan Divider	1
2	0018778	Water Pan	2
3	0018784	Baffle (water pan)	2
4	0018758	Door Assembly	2
5	0018720	Heat Shield	2

INSTALLATION

1. Remove all packaging materials.
2. Remove, wash, and dry water pans, baffles, heat shields and the center pan divider.
3. Wipe all surfaces with damp cloth.
4. Wipe the glass surfaces, inside and out, with a clean cloth.
5. Place baffles (#3) inside water pans (#2) and slide in place through bottom opening in back of unit (Fig.1).
6. Position heat shields (#5) on elements (Fig.2). Shields rest on elements and large support rod.
7. Place unit on a sturdy, level table or other work surface. Unit should be placed near an electrical outlet so the power cord is not stretched or strained.

TO INSTALL DOOR:

1. Carefully place the top of each door assy (#4) into the upper plastic channel.
2. Allow the door to rest on the lower plastic channel.

OPERATION

1. Slide water pans out and fill with clean tap water. Fill with 4 qts. (3.8 liters) each.
2. Carefully slide pans completely back into cabinet, avoiding any spillage into the unit.
3. Turn power switch on.
4. Set thermostat to desired temperature.
5. Slide the rear glass doors open and load the serving pans with product using tongs or similar utensil.
6. Close the rear sliding doors.

SPECIFICATIONS

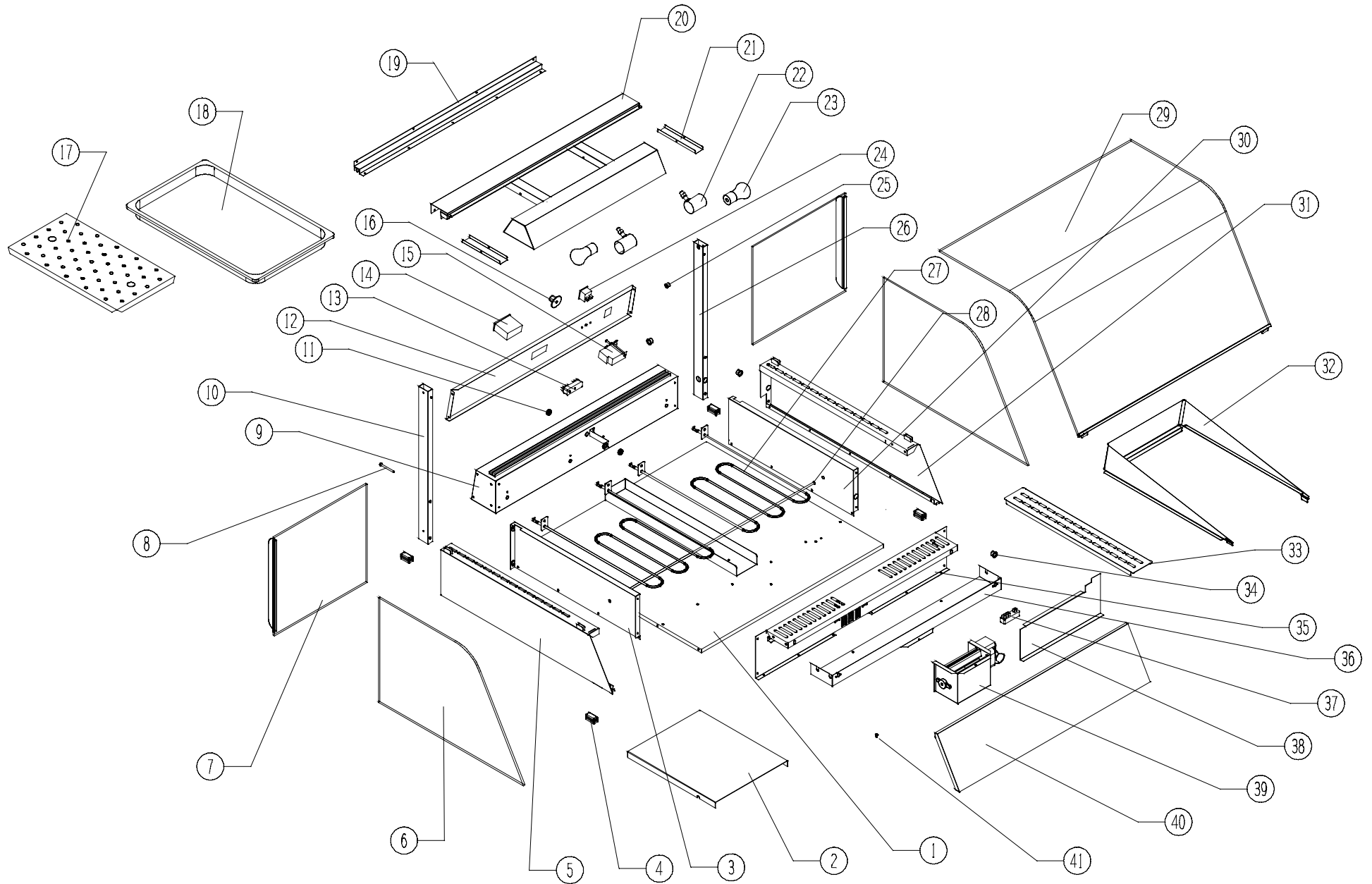
Dimensions: 31"L x 30.5"W x 21"H

Electrical: 120 Volts, 1500 Watts, 12.5 Amps 60Hz, Single Phase, with 6 ft. Grounded power cord

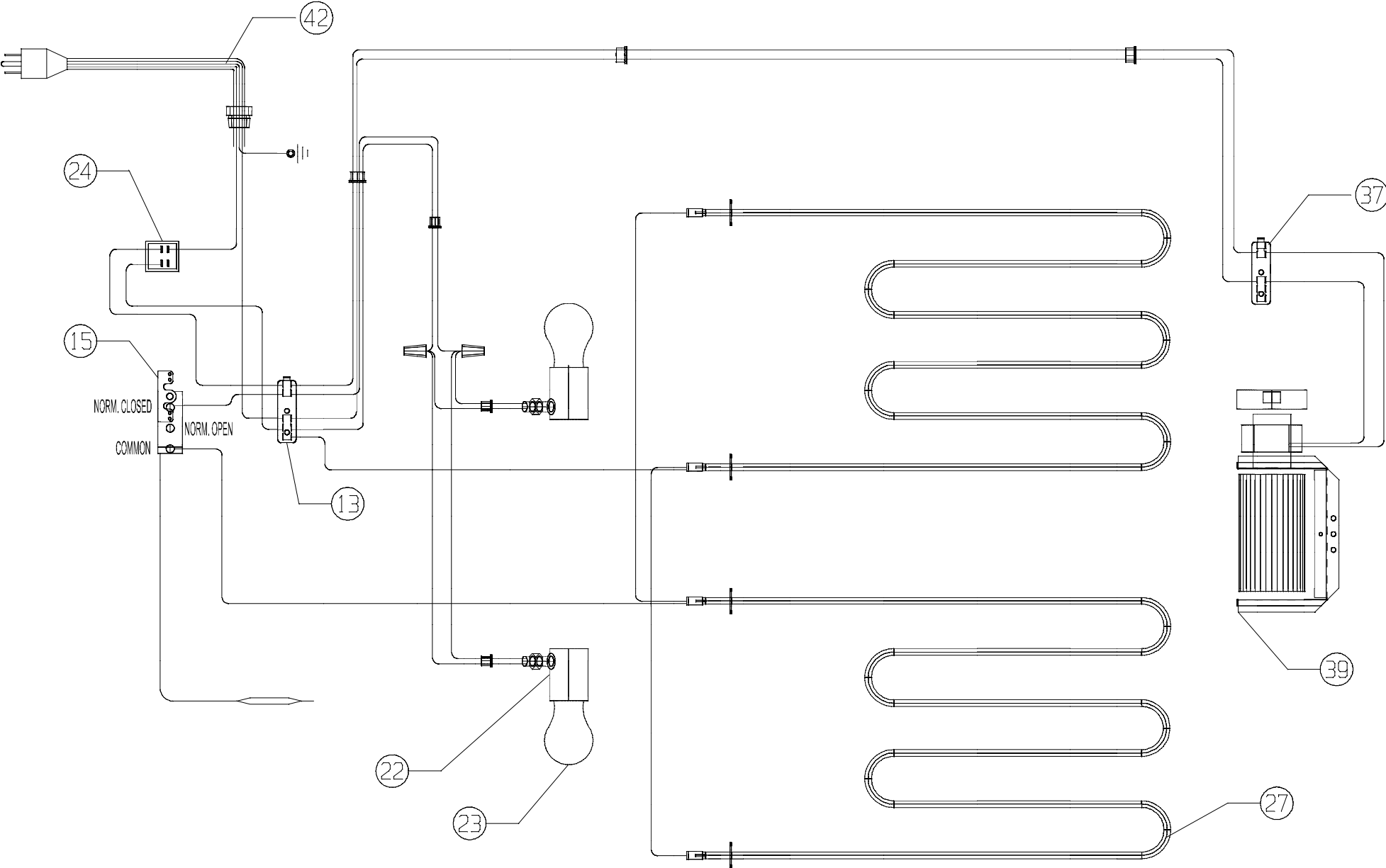
Food Capacity: (2) 2-1/2" (63.5mm) deep full size steam table pans

Water Capacity: (2) water pans; 4 qts. (3.8 liters) each

Model 995 Exploded View



Model 995 Wiring Diagram



MODEL 995

<u>ITEM #</u>	<u>PART #</u>	<u>DESCRIPTION</u>
1	0018701	BOTTOM FRAME ASSY
2	0018720	HEAT SHIELD
3	0018722	FRAME ASSY (LEFT)
4	0018783	GLIDE
5	0018727	SIDE FRAME (LEFT)
6	0018751	SIDE GLASS
7	0018758	DOOR ASSY
8	0018718	#10-32 X 2" PH MACHINE SCREW
9	0018747	CONTROL BOX & DOOR TRACK ASSY
10	0018726	FRAME UPRIGHT (LEFT)
11	0017362	RUBBER GROMMET
12	0018749	CONTROL PANEL
13	0016448	TERMINAL BLOCK
14	0017354	HORIZONTAL DRUM THERMOMETER
15	0017248	WATER THERMOSTAT
16	0017748	THERMOSTAT KNOB
17	0018784	BAFFLE (WATER PAN)
18	0018778	WATER PAN FULL SIZE
19	0018738	TOP FRAME INSERT ASSY
20	0018737	TOP FRAME & LIGHT (WELD)
21	0018740	LIGHT ARM COVER
22	0016307	LIGHT SOCKET ASSY
23	0018719	LIGHT BULB
24	0016119	ON/OFF SWITCH
25	0018728	SNAP BUSHING
26	0018716	FRAME UPRIGHT (RIGHT)
27	0018708-7	ELEMENT 700 WATTS @ 120V
28	0018710	SUPPORT ROD (HTG. ELEMENTS)
29	0018757	FRONT GLASS ASSY
30	0018712	FRAME ASSY (RIGHT)
31	0018717	SIDE FRAME (RIGHT)
32	0018777	COLLAR ASSY (ANGLED PAN)
33	0018779	PAN DIVIDER
34	0018748	SNAP BUSHING
35	0018707	BLOWER PANEL
36	0018775	AIR BOX ASSY
37	0017762	TERMINAL BLOCK
38	0018741	BLOWER GUARD
39	0018795	BLOWER ASSY
40	0018760	FRONT PANEL ASSY
41	00150	#8 X 3/8 SHEET METAL SCREW
42	00448	POWER CORD



An ISO 9001 Company

WISCO INDUSTRIES, INC.
P.O. BOX 10 OREGON, WI 53575
TELEPHONE (608)835-3106/(800)999-4726 FAX (608)835/8273

WARRANTY INFORMATION

* 1 YEAR REPLACEMENT/EXCHANGE *

If you should experience any mechanical difficulties with your Wisco Industries, Inc. manufactured unit during the 1 year warranty time period please do the following:

- * Contact Wisco Industries, Inc. for repair/replacement by calling (608)835-3106 or Toll Free (800)999-4726.
- * Please have your **MODEL #** and **SERIAL #** available. These numbers can be found on a black decal located on the lower side of the unit. There is also a date of manufacturing that can be found on the bottom of the unit.
- * At that time, we can assist you in:
 - getting your unit replaced/exchanged
 - and/or obtaining repair parts
 - and/or authorizing a service agent
- ** Please note that you **MUST** contact Wisco Industries, Inc. and obtain a RMA# **BEFORE** any warranty issues can be resolved. ***Failure to do so may void the warranty/claim resulting in Wisco Industries, Inc. not being responsible for any incurred expenses and/or charges.***

LIMITED WARRANTY:

Wisco Industries, Inc. expressly warrants the product will be free from defects in workmanship and materials for a period of 1 year from the date of shipment. WISCO DISCLAIMS AND EXCLUDES ANY AND ALL OTHER EXPRESS OR IMPLIED WARRANTIES, INCLUDING WITHOUT LIMITATION, ANY AND ALL WARRANTIES OF MERCHANTABILITY OR FITNESS FOR A PARTICULAR PURPOSE.

Buyer agrees that its **SOLE AND EXCLUSIVE REMEDY** against Wisco and Wisco's **SOLE AND EXCLUSIVE LIABILITY** arising out of any defect or nonconformity in the product shall be replacement/exchange of such nonconforming countertop food service equipment at Wisco's expense. No countertop food service equipment shall be returned without Wisco's consent. **IT IS AGREED THAT WISCO'S MAXIMUM LIABILITY SHALL NOT IN ANY CASE EXCEED THE SALE PRICE FOR THE COUNTERTOP EQUIPMENT CLAIMED TO BE DEFECTIVE OR NONCONFORMING.**