

# LTR SYSTEM

## Label - Tape - Ribbon Dispensers



MODEL 660N

MODEL 670N

## MODEL 660N/670N



### FEATURES:

- Dispensers accommodate tape, labels and ribbon in any roll width having core diameters of either 1" or 3" and an overall diameter of up to 6".
- Rolls are installed and replaced without disturbing others in place.
- 4 suction cups on bottom to secure placement of unit.

### **MODEL 660N**

18" Version  
19"L x 8-5/8"W x 4-1/8"H

### **SINGLE UNIT:**

**SHIPPING DIMENSIONS:** 20"L x 9"W x 5"H  
**SHIPPING WEIGHT:** 8 lbs.

### **CASE OF 6 UNITS:**

**SHIPPING DIMENSIONS:** 19"L x 14"W x 20"H  
**SHIPPING WEIGHT:** 50 lbs.

### **MODEL 670N**

10" Version  
11"L x 8-5/8"W x 4-1/8"H

### **SINGLE UNIT:**

**SHIPPING DIMENSIONS:** 12"L x 9"W x 5"H  
**SHIPPING WEIGHT:** 5 lbs.

### **CASE OF 6 UNITS:**

**SHIPPING DIMENSIONS:** 19"L x 14"W x 12"H  
**SHIPPING WEIGHT:** 32 lbs.



**WISCO INDUSTRIES®**

P.O. BOX #10  
OREGON, WI 53575  
PHONE: 608-835-3106  
FAX: 608-835-8273  
www.wiscoind.com

### LIMITED WARRANTY:

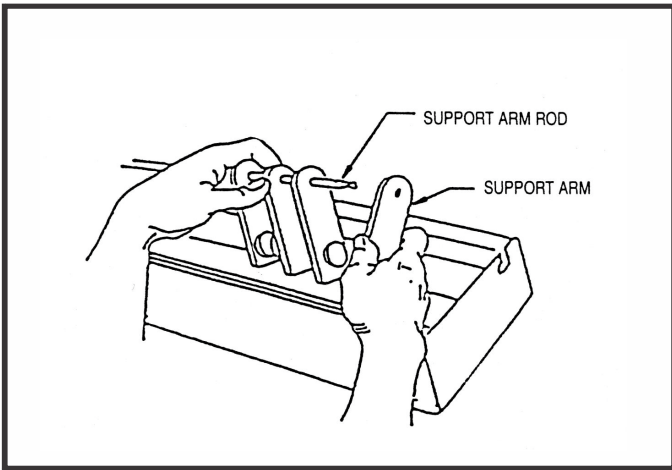
Wisco Industries, Inc. expressly warrants the product will be free from defects in workmanship and materials for a period of 1 year from the date of shipment. WISCO DISCLAIMS AND EXCLUDES ANY AND ALL OTHER EXPRESS OR IMPLIED WARRANTIES, INCLUDING WITHOUT LIMITATION, ANY AND ALL WARRANTIES OF MERCHANTABILITY OR FITNESS FOR A PARTICULAR PURPOSE.

Buyer agrees that its SOLE AND EXCLUSIVE REMEDY against Wisco and Wisco's SOLE AND EXCLUSIVE LIABILITY arising out of any defect or nonconformity in the product shall be replacement/exchange of such nonconforming countertop food service equipment at Wisco's expense. No countertop food service equipment shall be returned without Wisco's consent. IT IS AGREED THAT WISCO'S MAXIMUM LIABILITY SHALL NOT IN ANY CASE EXCEED THE SALE PRICE FOR THE COUNTERTOP EQUIPMENT CLAIMED TO BE DEFECTIVE OR NONCONFORMING.

# ASSEMBLY & LOADING INSTRUCTIONS FOR MODELS 660N/670N

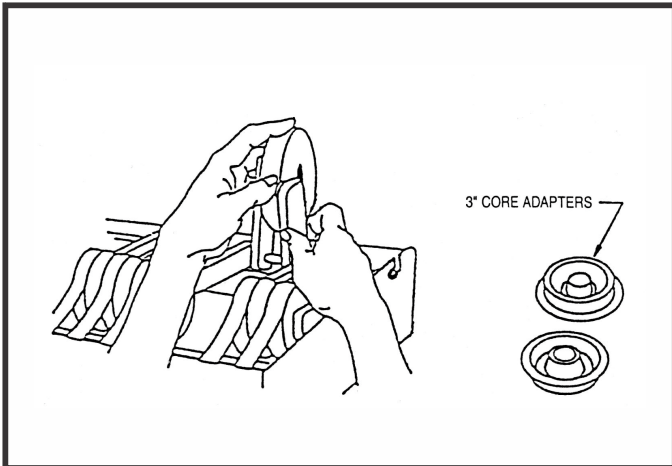
## STEP 1:

To aid in assembly, spray wax or other lubricant on support rod. Two arms support each roll. Slide loaded support arm into "J" notches and pull forward.



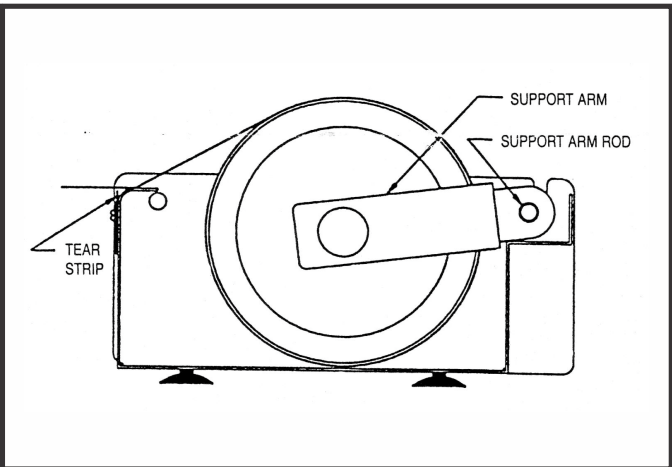
## STEP 2:

Place rolls of labels, tape or ribbon in between support arms. 3" core adapters are included for large core rolls.



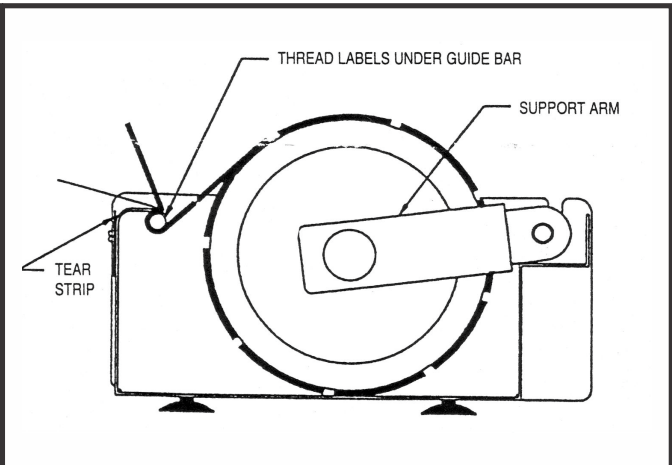
## STEP 3:

Pull labels, tape or ribbon forward so it sticks to top flange of front wall.

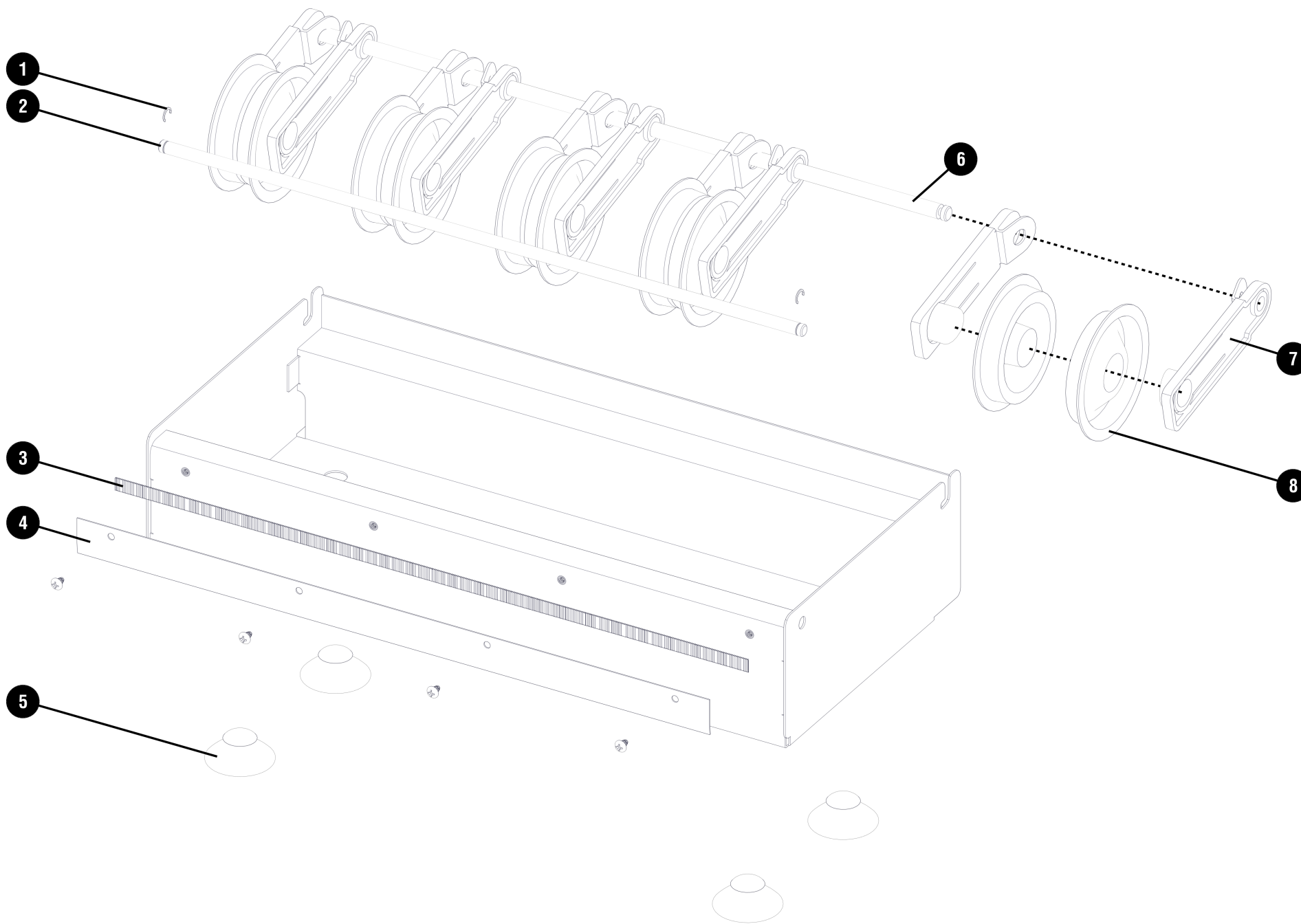


## STEP 4:

Thread label, tape or ribbon stock under guide bar and over top flange of front wall.



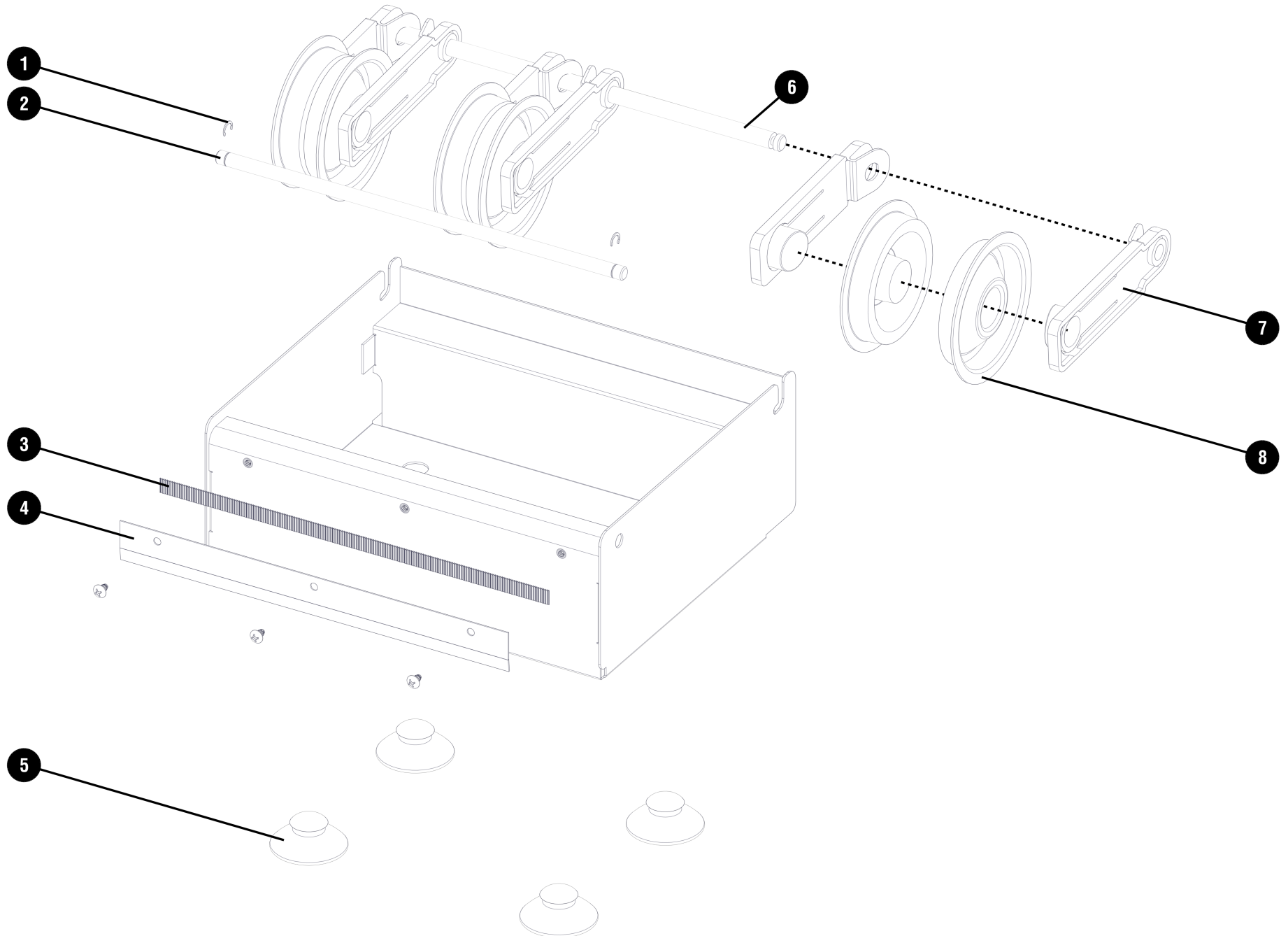
# Model 660N Exploded View



**MODEL 660N**

<u>ITEM #</u>	<u>PART #</u>	<u>DESCRIPTION</u>
1	0017059	EXTERNAL RETAINING RING
2	0017058	TAPE GUIDE SHAFT
3	0017067	18" TEAR STRIP CORRUGATED BLADE
4	0017063N	TRAP STRIP
5	0017076	SUCTION CUP #FLX1259 EPDM 60
6	0017057N	ARM SUPPORT SHAFT 18"
7	0017054	ARM-MOLDED
8	0017055	ADAPTER BLACK / HUB

# Model 670N Exploded View



**MODEL 670N**

<u>ITEM #</u>	<u>PART #</u>	<u>DESCRIPTION</u>
1	0017059	EXTERNAL RETAINING RING
2	0017102	TAPE GUIDE SHAFT
3	0017103	10" TEAR STRIP CORRUGATED BLADE
4	0017104N	TRAP STRIP
5	0017076	SUCTION CUP #FLX1259 EPDM 60
6	0017112N	ARM SUPPORT SHAFT 10"
7	0017054	ARM-MOLDED
8	0017055	ADAPTER BLACK / HUB



An ISO 9001 Company

**WISCO INDUSTRIES, INC.**  
P.O. BOX 10 OREGON, WI 53575  
TELEPHONE (608)835-3106/(800)999-4726 FAX (608)835/8273

## WARRANTY INFORMATION

### \* 1 YEAR REPLACEMENT/EXCHANGE \*

If you should experience any mechanical difficulties with your Wisco Industries, Inc. manufactured unit during the 1 year warranty time period please do the following:

- \* Contact Wisco Industries, Inc. for repair/replacement by calling (608)835-3106 or Toll Free (800)999-4726.
- \* Please have your **MODEL #** and **SERIAL #** available. These numbers can be found on a black decal located on the lower side of the unit. There is also a date of manufacturing that can be found on the bottom of the unit.
- \* At that time, we can assist you in:
  - getting your unit replaced/exchanged
  - and/or obtaining repair parts
  - and/or authorizing a service agent
- \*\* Please note that you **MUST** contact Wisco Industries, Inc. and obtain a RMA# **BEFORE** any warranty issues can be resolved. ***Failure to do so may void the warranty/claim resulting in Wisco Industries, Inc. not being responsible for any incurred expenses and/or charges.***

#### LIMITED WARRANTY:

Wisco Industries, Inc. expressly warrants the product will be free from defects in workmanship and materials for a period of 1 year from the date of shipment. WISCO DISCLAIMS AND EXCLUDES ANY AND ALL OTHER EXPRESS OR IMPLIED WARRANTIES, INCLUDING WITHOUT LIMITATION, ANY AND ALL WARRANTIES OF MERCHANTABILITY OR FITNESS FOR A PARTICULAR PURPOSE.

Buyer agrees that its **SOLE AND EXCLUSIVE REMEDY** against Wisco and Wisco's **SOLE AND EXCLUSIVE LIABILITY** arising out of any defect or nonconformity in the product shall be replacement/exchange of such nonconforming countertop food service equipment at Wisco's expense. No countertop food service equipment shall be returned without Wisco's consent. **IT IS AGREED THAT WISCO'S MAXIMUM LIABILITY SHALL NOT IN ANY CASE EXCEED THE SALE PRICE FOR THE COUNTERTOP EQUIPMENT CLAIMED TO BE DEFECTIVE OR NONCONFORMING.**