

DELI WRAPPER



MODEL 630

FEATURES:

- INCLUDES ADAPTER DISC FOR 10" - 12" PIZZAS.
- High watt density heating element shrink wraps pizza in seconds.
- Thermostatically controlled heating element provides controlled heat for continuous or intermittent operation.
- (3) thumb screws remove basic protection shroud for cleaning. Heat shroud and stainless steel clean-out tray add to ease of maintenance and cleanability.
- Heat shroud reduces temperature to prevent film sticking and provides extra measure of safety to prevent burns.
- Adjustable pedestal accommodates various sizes of product for shrink wrapping.

ELECTRICAL:

- 120 volts, 12.5 amps, 1150 watts
- Best when operated on an individual branch circuit
- 6' power cord length

DIMENSIONS: (does not reflect shipping dimensions)

- 7"H x 12"W x 12"D with adjustable supporting surface.
- 14" diameter protective shield

SHIPPING WEIGHT:

Approx. 13 lbs.

AVAILABLE ACCESSORIES:



- MODEL 650-BW: 2 tier dispenser (photo shown)
- MODEL 650-1-BW: Single tier dispenser
- 14" - 16" pizza Adapter Disc (#0016239)
- 6" - 8" pizza Adapter Disc (#0016240)
- **SHRINK FILM:**

Part Number	Sheet Size	Recommended For:	# of Sheets Per Roll
0017011	16 x 16	8" Pizza	1100
0017018	18 x 18	10" Pizza	600
0017008	20 x 20	12" Pizza	500
0017010	22 x 22	14" Pizza	500
0017009	24 x 24	16" Pizza	500



WISCO INDUSTRIES®

P.O. BOX #10
 OREGON, WI 53575
 PHONE: 608-835-3106
 FAX: 608-835-8273
 www.thepizzaoven.biz

FP140022-M
 REV. 01/13

LIMITED WARRANTY:

Wisco Industries, Inc. expressly warrants the product will be free from defects in workmanship and materials for a period of 1 year from the date of shipment. WISCO DISCLAIMS AND EXCLUDES ANY AND ALL OTHER EXPRESS OR IMPLIED WARRANTIES, INCLUDING WITHOUT LIMITATION, ANY AND ALL WARRANTIES OF MERCHANTABILITY OR FITNESS FOR A PARTICULAR PURPOSE.

Buyer agrees that its SOLE AND EXCLUSIVE REMEDY against Wisco and Wisco's SOLE AND EXCLUSIVE LIABILITY arising out of any defect or nonconformity in the product shall be replacement/exchange of such nonconforming countertop food service equipment at Wisco's expense. No countertop food service equipment shall be returned without Wisco's consent. IT IS AGREED THAT WISCO'S MAXIMUM LIABILITY SHALL NOT IN ANY CASE EXCEED THE SALE PRICE FOR THE COUNTERTOP EQUIPMENT CLAIMED TO BE DEFECTIVE OR NONCONFORMING.

MODEL 630-1 DELI WRAP INSTRUCTIONS

UNPACKING AND ASSEMBLY:

- Remove Deli-Wrap from carton
- Remove cardboard from bottom of unit and heating element.
(CAUTION: DO NOT PLUG UNIT IN WITH CARDBOARD HEATING ELEMENT SUPPORT IN PLACE).
- Screw threaded rod into disc.
- Thread wing nut on the opposite end of rod so the wings of the nut face jam nut.
- Thread disc and rod assembly into grille assembly until the height is approx. 4-1/2" to 5".
- Lock wing nut against grille assembly. (The 4-1/2" to 5" dimension given is only a starting place. Due to the differences in wrapping mediums, you may have to adjust your pedestal height to attain best wrapping results.)
- Place grille with pedestal assembly on the brackets riveted to the inner shroud.
- Clean out tray can then be put in place. Clean out tray should be centered between shroud support brackets and resting on the base of the unit.

* You are now ready to plug the unit into a 15amp 115 volt outlet.

CAUTION: THE CARDBOARD SUPPORT MUST BE REMOVED FROM THE HEATING ELEMENT BEFORE ENERGIZING UNIT.

OPERATION:

Plug unit in and turn the thermostat switch to the Medium to High position. Pre-heat Deli Wrap machine for approximately 3 minutes.

Place the product being wrapped on the center of the pedestal, immediately tear off a sheet of shrink wrap material from the Deli-Wrap dispenser and place over product paying special attention to the symmetry. Best results will be achieved if the wrapping material is evenly laid over the product.

In approximately 10 to 20 seconds your product will be enveloped and sealed. Remove from pedestal and allow to cool. **CAUTION: DO NOT LEAVE PRODUCT UNATTENDED WHEN WRAPPING.**

MAINTENANCE:

Unplug unit before any cleaning, servicing or maintenance is performed.

The outer shroud, inner shroud, clean out tray and grille assembly with pedestal can be removed for daily cleaning. **CAUTION: ALLOW UNIT TO COOL BEFORE REMOVING ANY PARTS. DO NOT IMMERSE BASE ASSEMBLY OF THE DELI WRAP IN WATER.**

Replace all parts after cleaning.

Pizzawrap and Capper

FAST and EFFICIENT

4 SIMPLE
STEPS



Step 1: Tear shrink film at the perforation

*Be sure to place film on dispenser so it feeds from the bottom. If you pull film from "over" the roll tearing could occur.

Step 2: Place cardboard round w/pizza on heated deli wrapper;
Place shrink film on top of pizza

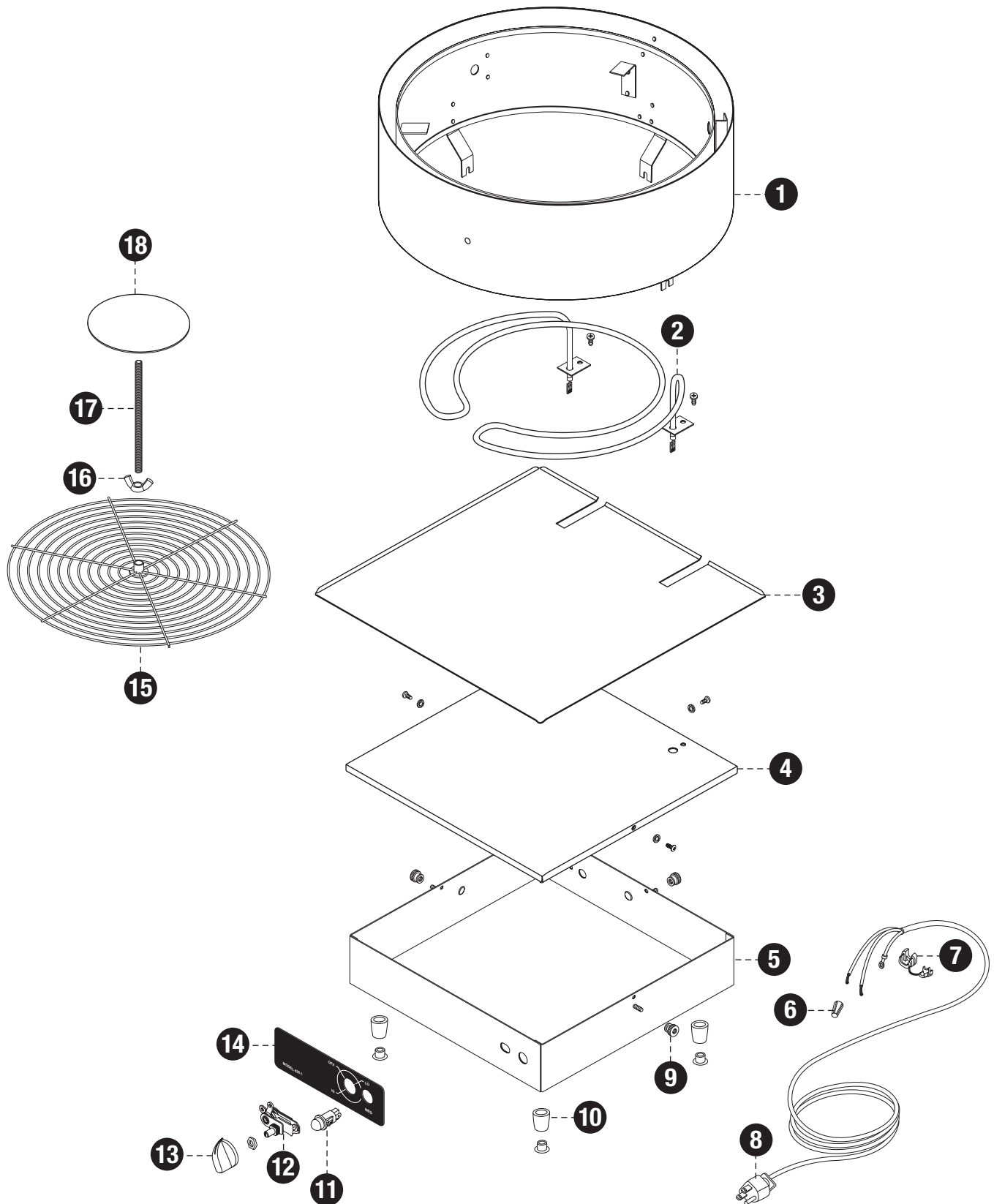
Step 3: Allow deli wrapper to shrink film around pizza.

Step 4: Professionally wrapped pizza is now ready for sale.

MODEL 630-1

<u>ITEM #</u>	<u>PART #</u>	<u>DESCRIPTION</u>
1	0016220	SHROUD ASSY
2	0016000	1500W HEATING ELEMENT
3	0016018	CLEAN OUT TRAY
4	0016006	TOP
5	0016215	CASE (630-1)
6	00140	WIRE NUT
7	00131	STRAIN RELIEF
8	00448	SHIPPING CARTON
9	00116	THUMB NUT 10-24 (½ x 21/64)
10	0018032SK	FOOT SERVICE KIT
11	009092	RED PILOT LIGHT
12	0016015	THERMOSTAT
*	0016119	ON/OFF SWITCH
13	00100	THERMOSTAT KNOB
14	I013154	630-1 CONTROL DECAL
15	0016002	GRILLE STAND
16	0016009	3/8 – 16 WING NUT
17	0016011	ROD, THREADED
18	0016240	3-1/2" ADAPTER DISC (for 6"-8" pizzas)
*	0016244	DISC W/ NUT (for 10-12" pizzas)
*	0016239	10" ADAPTER DISC (for 14"-16" pizzas)
*	0016030	14-1/2" WHITE WIRE LEAD
*	0016031	13" WHITE WIRE LEAD
		*need 1 of each #0016030 & #0016031 for old style unit only
*	0017008	SHRINK FILM 20"X20"
*	0017009	SHRINK FILM 24"X24"
*	0017010	SHRINK FILM 22"X22"
*	0017011	SHRINK FILM 16"X16"
*	0017018	SHRINK FILM 18"X18"

Model 630-1 Exploded View



Model 630-1 Wiring Diagram

