

FOOD WARMING/MERCHANDISING CABINET



MODEL 323HH (15") & 323HH-7 (7")

(*Above photo shows a 15" & 7" model side by side)

With the ability to hold a point-of-purchase advertisement, these sleek, compact warmers are sure to draw eye catching attention. Available with a humidity option to accommodate a variety of food products for extended periods of time.

MODEL 323HH (15")

FEATURES:

- 15-1/16"W x 19-3/4"D x 19"H
- Fully adjustable thermostat
- Temperatures from 80 to above 150 deg. F
- overhead illumination
- Lift off door and removable side panels for easy cleaning
- 2 tier removable rack
14-7/8" x 12-1/2"
11-5/8" x 12-1/2"
*5-1/4" spacing between shelves
- Glass sides/Acrylic front & stainless steel construction

ELECTRICAL:

- 120 volts, 7.5 amps, 900 watts
- Best when operated on an individual branch circuit
- 6' power cord length

SHIPPING DIMENSIONS: 25" x 22" x 24"

SHIPPING WEIGHT: 55 lbs.

MODEL 323HH-7 (7")

FEATURES:

- 7-1/8"W x 19-3/4"D x 19"H
- Fully adjustable thermostat
- Temperatures from 80 to 150 deg. F
- overhead illumination
- Lift off door and removable side panels for easy cleaning
- 3 tier removable rack
15-3/4" x 6"
13-1/2" x 6"
11-1/4" x 6"
*3-5/8" spacing between shelves
- Glass sides/Acrylic front & stainless steel construction

ELECTRICAL:

- 120 volts, 5.5 amps, 650 watts
- Best when operated on an individual branch circuit
- 6' power cord length

SHIPPING DIMENSIONS: 25" x 14" x 24"

SHIPPING WEIGHT: 34 lbs.



WISCO INDUSTRIES®

P.O. BOX #10
OREGON, WI 53575
PHONE: 608-835-3106
FAX: 608-835-8273
www.wiscoind.com

LIMITED WARRANTY:

Wisco Industries, Inc. expressly warrants the product will be free from defects in workmanship and materials for a period of 1 year from the date of shipment. WISCO DISCLAIMS AND EXCLUDES ANY AND ALL OTHER EXPRESS OR IMPLIED WARRANTIES, INCLUDING WITHOUT LIMITATION, ANY AND ALL WARRANTIES OF MERCHANTABILITY OR FITNESS FOR A PARTICULAR PURPOSE.

Buyer agrees that its SOLE AND EXCLUSIVE REMEDY against Wisco and Wisco's SOLE AND EXCLUSIVE LIABILITY arising out of any defect or nonconformity in the product shall be replacement/exchange of such nonconforming countertop food service equipment at Wisco's expense. No countertop food service equipment shall be returned without Wisco's consent. IT IS AGREED THAT WISCO'S MAXIMUM LIABILITY SHALL NOT IN ANY CASE EXCEED THE SALE PRICE FOR THE COUNTERTOP EQUIPMENT CLAIMED TO BE DEFECTIVE OR NONCONFORMING.

INTRODUCTION


We congratulate you on your recent purchase of the Wisco 323 Food Merchandiser. Our company has tremendous pride in presenting you with a dependable, top quality unit that is designed to provide you with years of reliable service.

As a safety precaution we recommend all instructions and safety tips appearing in this manual be reviewed prior to operation.


CONSTRUCTION

Wisco's Display Warmer is constructed of 22 gauge brushed stainless steel. If you have a 15" version your warmer is equipped with tempered glass sides & front. If you have the 7" version your unit is equipped with tempered glass sides and an acrylic front. Both units feature a chrome plated rack that is easily removed for quick cleaning.

IMPORTANT: Read the following safety and operation instructions to avoid injury and to avoid damage to equipment or property.

 Plug unit into a properly grounded electrical outlet of the correct voltage, size and plug configuration for this unit. We recommend usage on an individual branch circuit of at least 15 amps for best results. Failure to do so may result in decreased performance of the warmer.


 Unplug unit from power source and allow to cool completely before performing any maintenance or cleaning.

 Exterior surfaces on unit may get hot. Use caution when touching these areas to avoid injury.

 Only shatter resistant light bulbs which meet or exceed NSF Standards specifically designed for food holding units must be used. Breakage of bulbs not specially coated could result in personal injury and/or food contamination.

This warmer is designed to maintain food product at or above the optimum temperature. It is not designed or intended to heat up or cook food to the serving temperature. Product is to be prepared to the appropriate serving temperature before placing in the warmer.

CLEANING INSTRUCTIONS:

 Do not steam clean or use excessive water on unit to avoid personal injury or electrical shock.

 Unplug unit from power source and allow to cool completely before performing any maintenance or cleaning.

 Unit is not waterproof. Do Not submerge in water. Do not operate if unit has been submerged in water.

It is recommended that the interior and exterior surfaces be cleaned daily with a mild soap and damp cloth. Stubborn stains on base of unit may be removed with a non-abrasive cleaner and damp cloth. Usage of an abrasive cleanser could scratch or damage the finish of your unit.

The use of any type of ammonia, alcohol or chlorine based brand name household cleaners will cause cracking of the enclosure/door and is not covered under warranty. Clean unit with warm soapy water and soft cloth only.

EQUIPMENT SET UP & OPERATION :

- Once the unit has been taken out of the shipping carton and has been unpackaged, check to make sure that the lightbulb is securely in its socket.
- Before loading prepared food product into the warmer, you must preheat the unit for 30 minutes at a setting of 4 or 5 on the thermostat dial. After the preheat time has elapsed you can then go ahead and place the previously prepared food product inside and adjust the thermostat accordingly.
- The amount of product placed in the warmer will affect the performance of the warmer. We suggest periodically checking the internal temperature of product and adjusting the temperature settings if necessary. Keep door(s) closed when not serving.
- If your unit comes with the humidity option please be sure to fill pan with appropriate amount of water.

TO REPLACE DISPLAY LIGHT/BULB:



Only shatter resistant light bulbs which meet or exceed NSF Standards specifically designed for food holding units must be used. Breakage of bulbs not specially coated could result in personal injury and/or food contamination.

- Disconnect the power supply cord and wait until unit has completely cooled. Remove bulb guard and light bulb and replace with a new bulb. Same style and wattage.

TROUBLESHOOTING:



Unplug unit from power source and allow to cool completely before performing any maintenance or cleaning.

Unit not working:

- Check power switch position, power cord and/or electrical circuit.

Display Light not working:

- Tighten or replace bulb

Loud noise coming from the unit:

- Check to see that blower motor is functioning properly

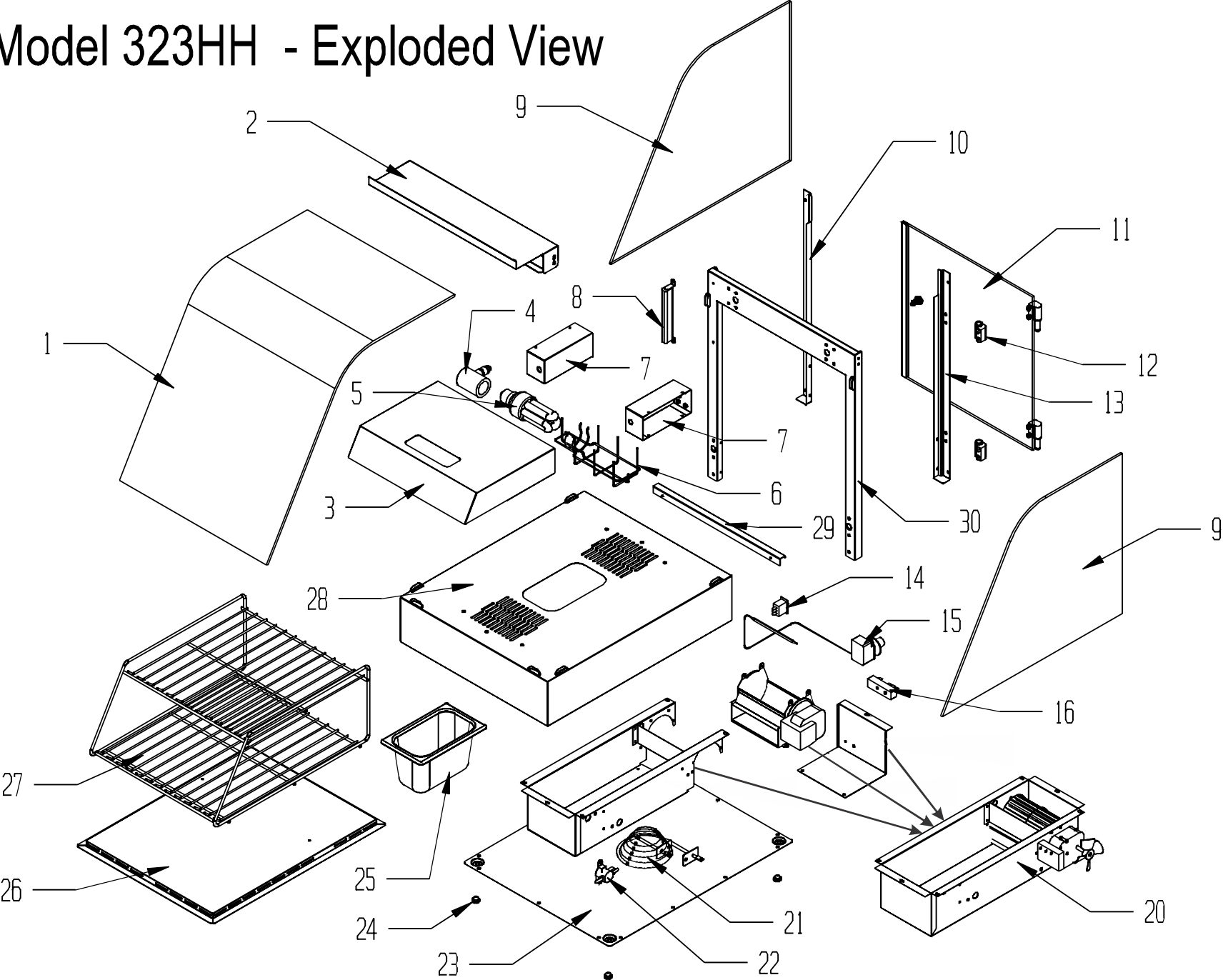
Unit not heating properly:

- Has food been prepared in advance and placed in warmer at proper serving temperature?
- Check heat settings. Is it at the correct setting for your food product?
- Turn unit on, open the door and verify that hot air is being blown into unit.
If not, your blower motor is not functioning properly.
- If the air being blown in is not hot then the thermostat is not functioning properly.

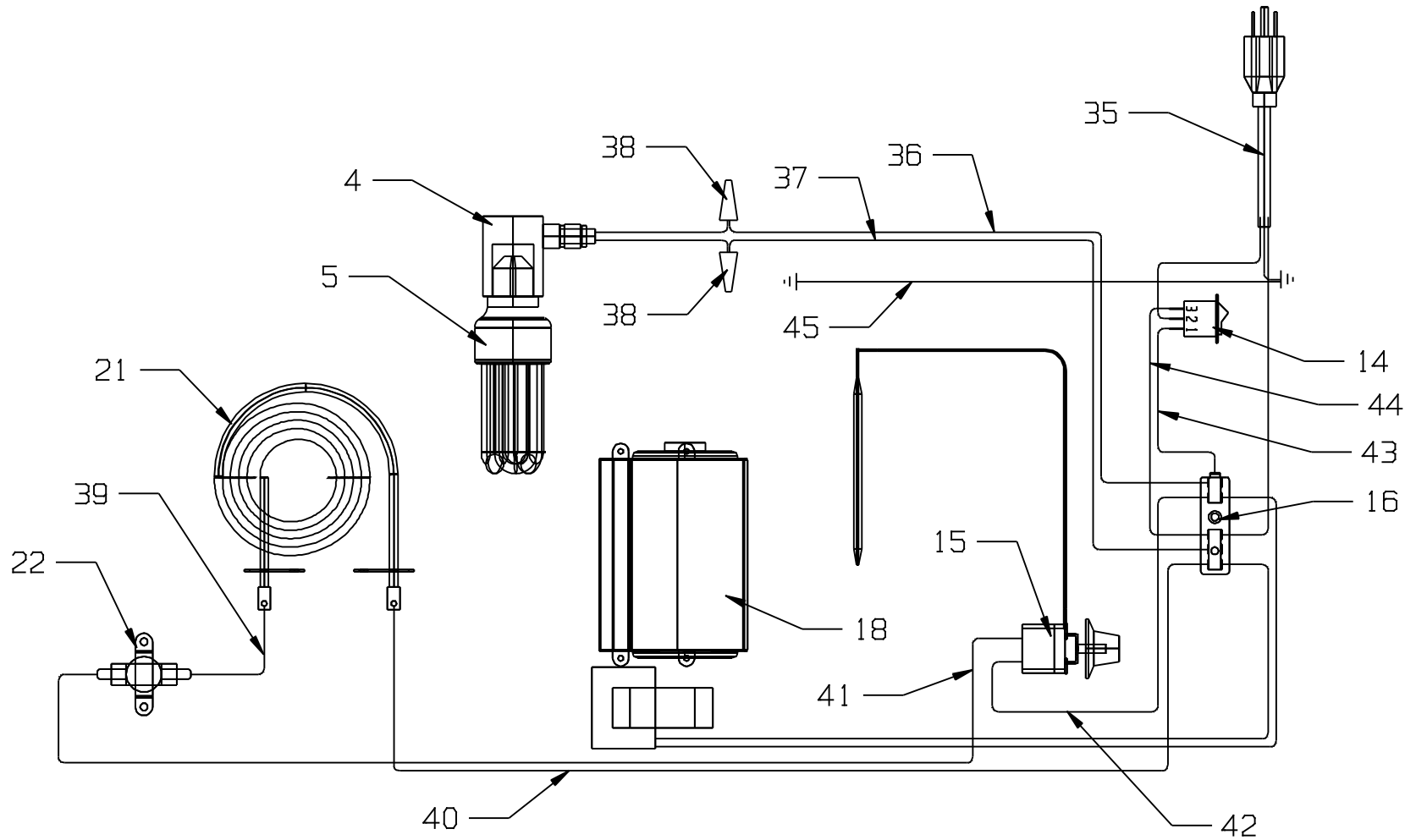
If you have further questions in regards to this piece of equipment - please contact Wisco Industries, Inc. directly at: (608)835-3106 or (800)999-4726; fax (608)835-8273 for further information.

*Please be sure to have the complete model # and serial # available.

Model 323HH - Exploded View



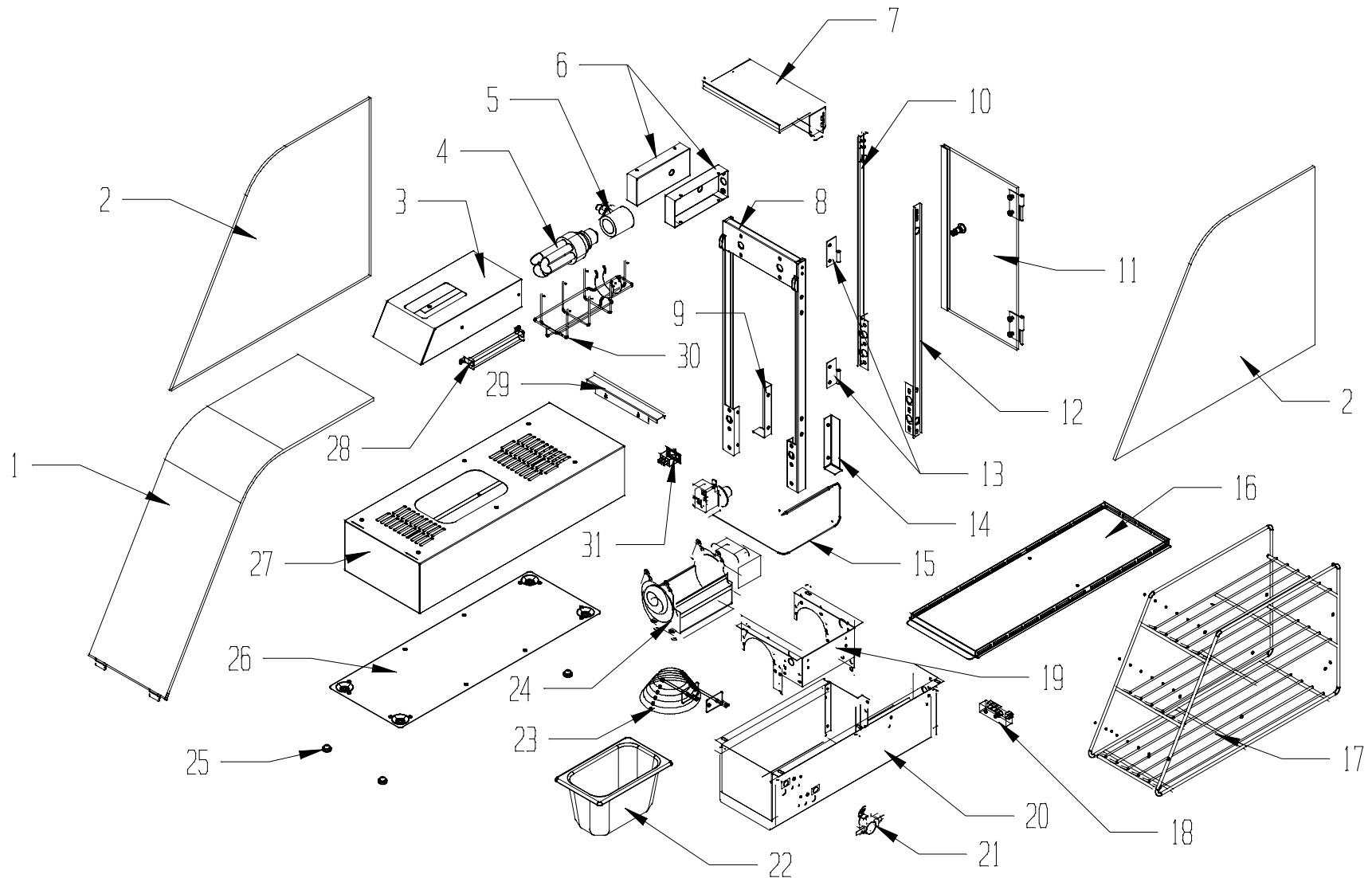
Model 323HH - Wiring diagram



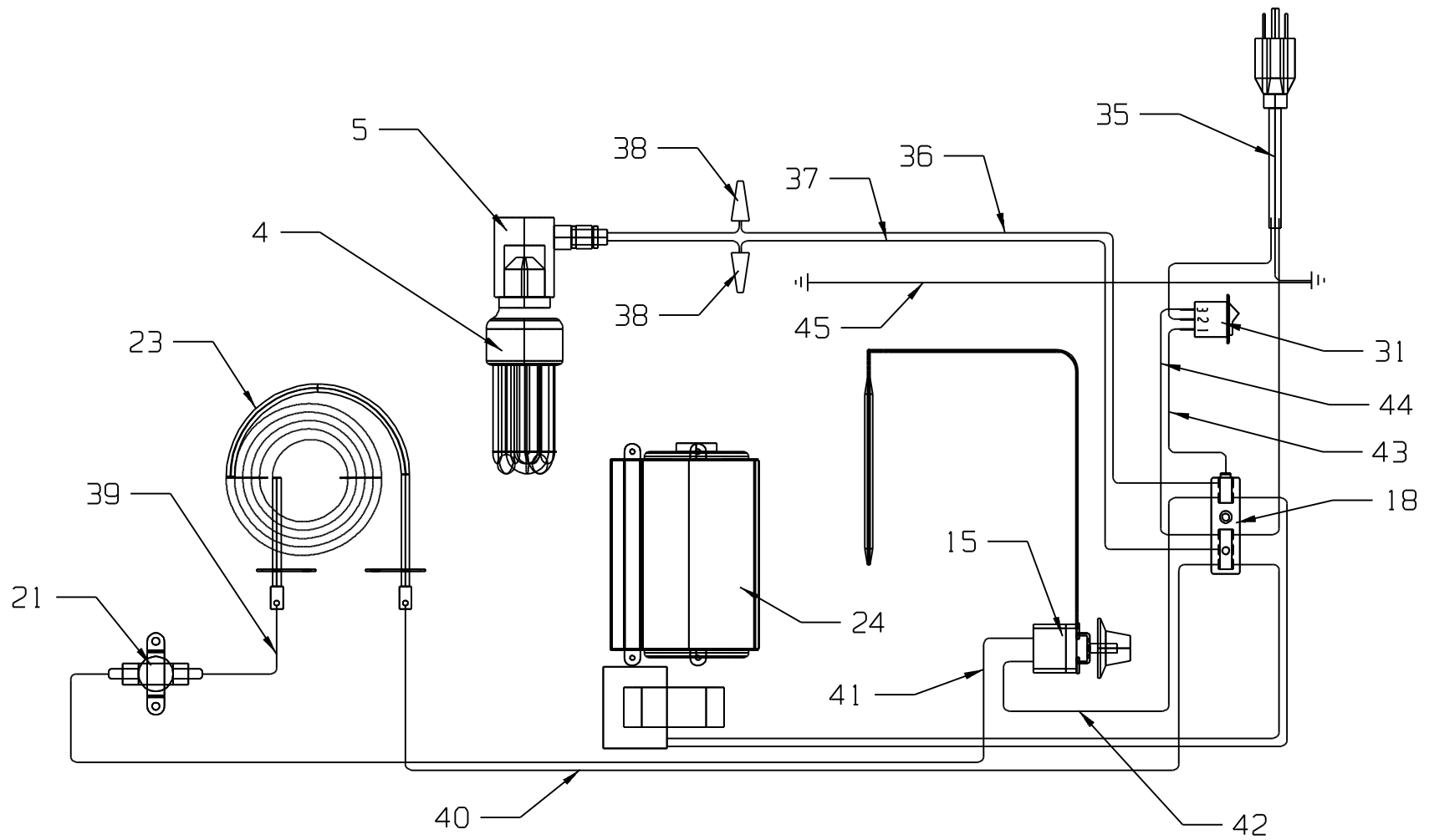
MODEL 323HH

<u>ITEM #</u>	<u>PART #</u>	<u>DESCRIPTION</u>
1	0021945	15" CURVED ACRYLIC
2	0022228	TOP BRACKET WELDMENT
3	0022234	LIGHT SHROUD
4	0016602	LIGHT SOCKET ASSY
5	0018180	LIGHT BULB 20W
6	0022312	BULB GUARD
7	0021989	LIGHT SUPPORT
8	0016123	THERMOMETER
9	0021946	SIDE GLASS
10	0022232	FILLER (BACK FRAME)
11	0022276	DOOR ASSEMBLY
12	0022065F	NYLON HINGE – FEMALE
*	0022065M	NYLON HINGE – MALE
13	0022231	HINGE BRACKET
14	00486	ON/OFF SWITCH
15	0021978	THERMOSTAT ASSY
16	0016448	TERMINAL BLOCK
20	0022219	BLOWER MOTOR ASSY
21	0019577	800W, 115V HEATING ELEMENT
22	0017379	HIGH LIMIT THERMOSTAT
23	0022233	BOTTOM PANEL
24	0021948	FOOT
25	0021998	WATER PAN
26	0021993	CLEAN OUT TRAY
27	0021986	RACK
28	0022221	BASE WELDMENT
29	0022225	DOOR FILLER (BASE)
30	0022226	BACK FRAME WELDMENT
35	0022277	POWER CORD
36	0016539	35" BLACK WIRE
37	0016538	35" 18AWG WHITE WIRE
38	00145	WIRE NUT 150DEG. C BLK #27-002 BULK
39	0021370	8" 18AWG, BLACK
40	0017705	20" 12AWG 200C WIRE LEAD
41	0017361	18GA 19" BLACK 200 DEG C WIRE
42	0021192	10" 16AWG BLACK #8F-1/4F
43	0017292	14GA 10" 105 DEG C WIRE LEAD
44	0021185	10" 16AWG WHITE 1/4-FC-1/4FC 300V 200C
45	0021976	GREEN WIRE

Model 323HH-7 - Exploded View



Model 323HH-7 Wiring Diagram



MODEL 323HH-7

<u>ITEM #</u>	<u>PART #</u>	<u>DESCRIPTION</u>
1	0022310	CURVED PANEL ASSY 323HH-7
2	0021946	SIDE GLASS
3	0022292	LIGHT SHROUD
4	0019172	LIGHT BULB
5	0022246	LIGHT SOCKET ASSY 304-7, 282
6	0022209	ARM LIGHT SUPPORT
7	0022265	TOP BRACKET WELDMENT
8	0022257	BACK FRAME WELDMENT
9	0022263	RIGHT FRAME BRACKET
10	0022261	RIGHT FRAME FILLER WELDMENT
11	0022274	DOOR ASSY 304-7
12	0022264	LEFT FRAME BRACKET
13	0016141	FEMALE HINGE
*	0016142	MALE HINGE
*	0016133	#8-32 SCREW
*	0016136	#8-32 ACORN NUT
14	0022264	LEFT FRAME BRACKET
15	0017248	WATER THERMOSTAT
*	0017274	THERMOSTAT KNOB
*	I013476	THERMOSTAT LABEL
16	0022306	CLEAN OUT CAP WELDMENT
17	0021987	MODEL 304-7 RACK
18	0016448	TERMINAL BLOCK
19	0022297	BLOWER MOUNT
20	0022295	AIR CHAMBER
21	0017379	HIGH LIMIT THERMOSTAT
22	0021998	WATER PAN
23	0016447	550W @ 115V HEATING ELEMENT
24	0022309	BLOWER MOTOR
25	0021948	FOOT
26	0022293	BOTTOM PANEL
27	0022255	BASE WELDMENT
28	0016123	THERMOMETER
29	0022299	DOOR FILLER
30	0022312	BULB GUARD
31	00486	ON/OFF SWITCH
35	0016181	POWER CORD
*	0016180	STRAIN RELIEF
36	0016539	35" BLACK WIRE
37	0016538	35" 18AWG WHITE WIRE
38	00145	WIRE NUT 150DEG. C BLK #27-002 BULK
39	0021370	8" 18AWG, BLACK
40	0017705	20" 12AWG 200C WIRE LEAD
41	0017361	18GA 19" BLACK 200 DEG C WIRE
42	0021192	10" 16AWG BLACK #8F-1/4F
43	0017292	14GA 10" 105 DEG C WIRE LEAD
44	0021185	10" 16AWG WHITE 1/4-FC-1/4FC 300V 200C
45	0021976	GREEN WIRE



An ISO 9001 Company

WISCO INDUSTRIES, INC.
P.O. BOX 10 OREGON, WI 53575
TELEPHONE (608)835-3106/(800)999-4726 FAX (608)835/8273

WARRANTY INFORMATION

* 1 YEAR REPLACEMENT/EXCHANGE *

If you should experience any mechanical difficulties with your Wisco Industries, Inc. manufactured unit during the 1 year warranty time period please do the following:

- * Contact Wisco Industries, Inc. for repair/replacement by calling (608)835-3106 or Toll Free (800)999-4726.
- * Please have your **MODEL #** and **SERIAL #** available. These numbers can be found on a black decal located on the lower side of the unit. There is also a date of manufacturing that can be found on the bottom of the unit.
- * At that time, we can assist you in:
 - getting your unit replaced/exchanged
 - and/or obtaining repair parts
 - and/or authorizing a service agent
- ** Please note that you **MUST** contact Wisco Industries, Inc. and obtain a RMA# **BEFORE** any warranty issues can be resolved. ***Failure to do so may void the warranty/claim resulting in Wisco Industries, Inc. not being responsible for any incurred expenses and/or charges.***

LIMITED WARRANTY:

Wisco Industries, Inc. expressly warrants the product will be free from defects in workmanship and materials for a period of 1 year from the date of shipment. WISCO DISCLAIMS AND EXCLUDES ANY AND ALL OTHER EXPRESS OR IMPLIED WARRANTIES, INCLUDING WITHOUT LIMITATION, ANY AND ALL WARRANTIES OF MERCHANTABILITY OR FITNESS FOR A PARTICULAR PURPOSE.

Buyer agrees that its **SOLE AND EXCLUSIVE REMEDY** against Wisco and Wisco's **SOLE AND EXCLUSIVE LIABILITY** arising out of any defect or nonconformity in the product shall be replacement/exchange of such nonconforming countertop food service equipment at Wisco's expense. No countertop food service equipment shall be returned without Wisco's consent. **IT IS AGREED THAT WISCO'S MAXIMUM LIABILITY SHALL NOT IN ANY CASE EXCEED THE SALE PRICE FOR THE COUNTERTOP EQUIPMENT CLAIMED TO BE DEFECTIVE OR NONCONFORMING.**