



WELLS BLOOMFIELD
A Division of Carrier Commercial Refrigeration, Inc.
2 ERIK CIRCLE, P. O. Box 280 Verdi, NV 89439
telephone: 888-492-2782
fax: 888-492-2783
www.wellsbloomfield.com

PARTS LIST

SERVICE PARTS LIST Free-Standing 60# Open Frypot Gas-Fired Fryers WFGA-60FS

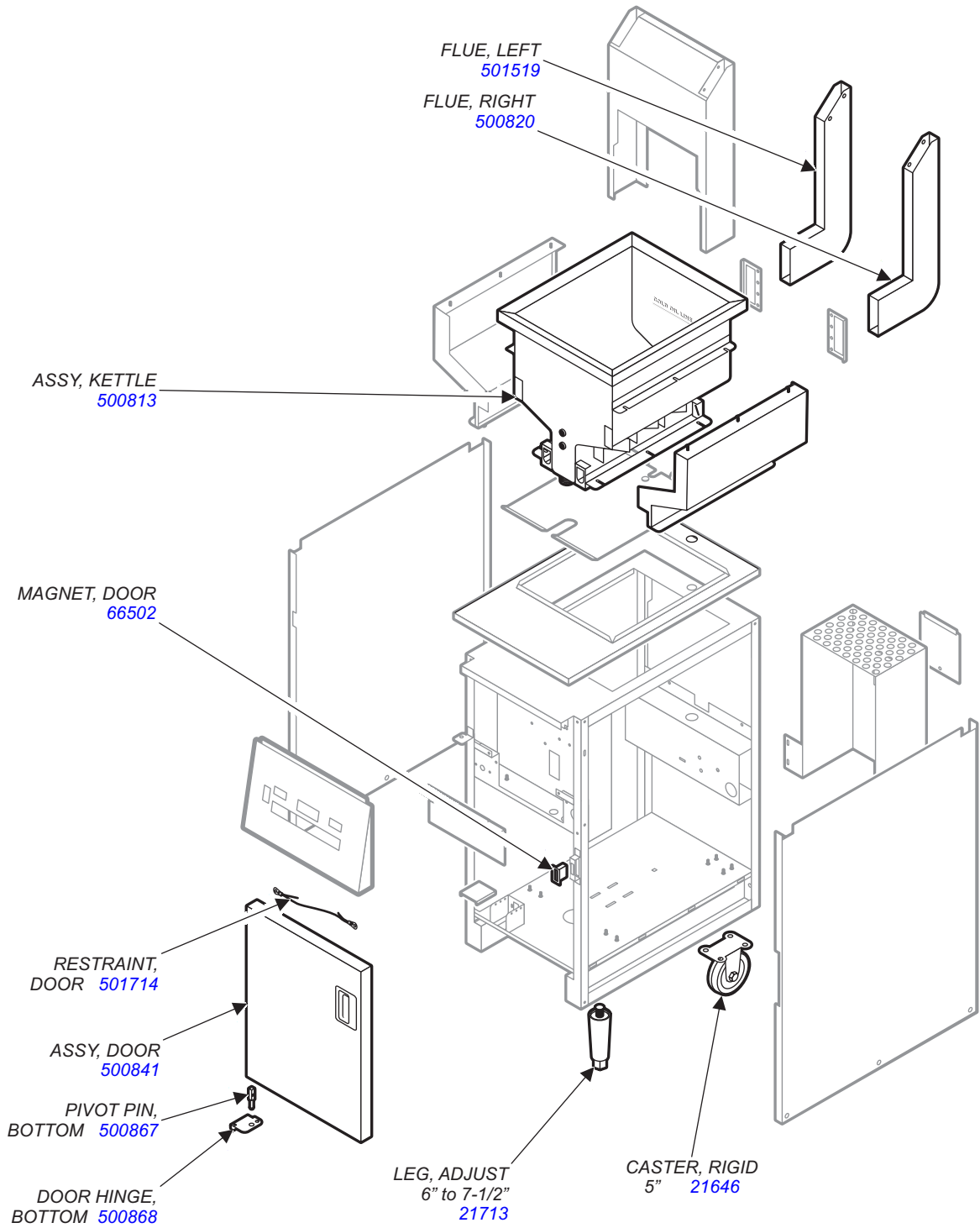
CONTENTS

Description	page
Parts List	2
WFGA-60FS	
Cabinet	3
Electrical	4
Auto-Lift	5
Gas & Burner System	6
Filter System	8
Accessories & Removable Components	9

PART #	DESCRIPTION	PART #	DESCRIPTION	PART #	DESCRIPTION
OPTIONAL ACCESSORIES		MECHANICAL		HARDWARE, etc.	
21646	CASTER, RIGID 5"	56178	TAPE, CORK 1/16 x 2 (100' ROLL)	50177	FIBER WASHER
21713	LEG, ADJUSTABLE 6" TO 7.5"	57748	FITTING, CONDUIT 3/8 STRAIGHT	51040	GROMMET, INSULATION HEYCO 7/8"
22410	FILTER POWDER (pk 45)	66459	ELBOW 1/2 NPT 90°	51053	NUT 8-32 KEPS Ni (pk 100)
22441	FRY BASKET, FIXED HANDLES	66474	O-RING .5 ID x .63 OD VITON (pk 5)	53935	SCREW 6ABx5/16 SMS Zi (pk 100)
22442	FILTER POWDER (pk 9)	66502	MAGNET, DOOR LATCH	54284	POP RIVET 3/35D x 1/8
22515	PADDLE, STIRRING CHICKEN	66692	CHECK VALVE 3/8 NPT	55485	NUT 1/4-20 SS (pk 100)
22516	BRUSH, CLEANING FRYER	66720	SUCTION LINE FITTING	60680	NUT 10-32 KEPS SS (pk 10)
22635	FILTER LEAF	67557	STRAIN RELIEF LIQ TIGHT	61048	BOLT 1/4-20 x 3/4 HEX SS
22796	FRYER BASKET, HALF-SIZE	69752	DOWEL, CLEANOUT	61974	NUT 8-32 x 7/8 Alu (pk 10)
23135	FRY BASKET, FOLDING HANDLE	69812	YOKE, LIFT ROD	62067	SCREW, 10-32 x 3/8 SS
23188	OIL WAND & HOSE ASSY	69816	VALVE, BALL 1-1/4 NPT	66145	SCREW 6-32 x3/16 BIND Ni (pk 10)
		69961	LIFT CRADLE	18-302	NUT, HEX SS
ELECTRICAL		69972	BUSHING, LIFT ROD	8043-506	NUT, HEX ACORN SS
50578	TERMINAL BLOCK	500031	BUSHING ROLLER .75 OD x .25 ID	8543-74	NUT, 4-40 HEX SS
62896	CONNECTOR, WIRE 12-14 GA (pk 5)	500037	PIVOT, CRADLE		
64887	MICROSWITCH 120V 15A	500542	LIFT ROD, MOTOR		
66663	THERMO, HI-LIMIT	500813	ASSY, KETTLE		
69550	SWITCH, ROCKER POWER	500820	ASSY, FLUE, RIGHT		
500782	IGNITION CONTROL, DIRECT SPARK	500841	ASSY, DOOR		
500830	CONTROLLER, COOK	500867	PIVOT PIN, BOTTOM	LITERATURE & DOCUMENTATION	
500974	SONALERT	500868	BRACKET, DOOR HINGE BOTTOM	301098	OPMANUAL, WFGA-60FS
501197	ASSY, SPARK & SENSOR LEFT	501158	THERMOSLEEVE, HI-LIMIT	301398	WIR DIAG WFGA-60FS
501198	ASSY, SPARK & SENSOR RIGHT	501519	ASSY, FLUE, RIGHT	301684	INSTALL WFGA-60FS FRENCH
501199	PROBE, "J" THERMOCOUPLE	501592	VALVE, BALL LO-PRESSURE	301903	INSTRUCTION, PAPERLESS FILTER
501200	RELAY, SOLID STATE 240V 25A	501714	RESTRAINT, DOOR	302359	INSTRUCTION, FILTER POWDER
501201	TRANSFORMER 120V : 24V	501858	ASSY, RESERVOIR		
501204	RELAY, CONTROL 120V 30A	501901	SHOVEL SS		
501231	PUMP, FILTER	501932	HANDLE, SMALL OVAL		
501234	FAN, COOLING	501953	ADAPTER, DRAIN HANDLE		
		502039	COVER, KETTLE		
GAS SYSTEM		502287	ASSY, FLEX HOSE 3/4 x16.5" SS		
65357	FITTING, ORIFICE	502417	DECAL, CONTROLLER FACEPLATE		
500769	REDUCER, GAS VALVE	504309	VALVE, 3-WAY SS		
500781	BURNER, LEFT	506082	NIPPLE, 1/2 NPT CLOSE		
500784	GAS VALVE, REDUNDANT COMBO	8706-109	STRAIN RELIEF 3/8 x90°		
500802	SUPPLY TUBE, GAS				
500980	BURNER, RIGHT				
502140	ORIFICE NAT (0'-2999') (pk 2)				
502141	ORIFICE NAT (3000'-5999') (pk 2)				
502142	ORIFICE NAT (6000'-8999') (pk 2)				
502143	ORIFICE NAT (ABOVE-9000') (pk 2)				
502144	ORIFICE LP (0'-1999') (pk 2)				
502145	ORIFICE LP (2000'-6999') (pk 2)				
502146	ORIFICE LP (ABOVE 7000') (pk 2)				

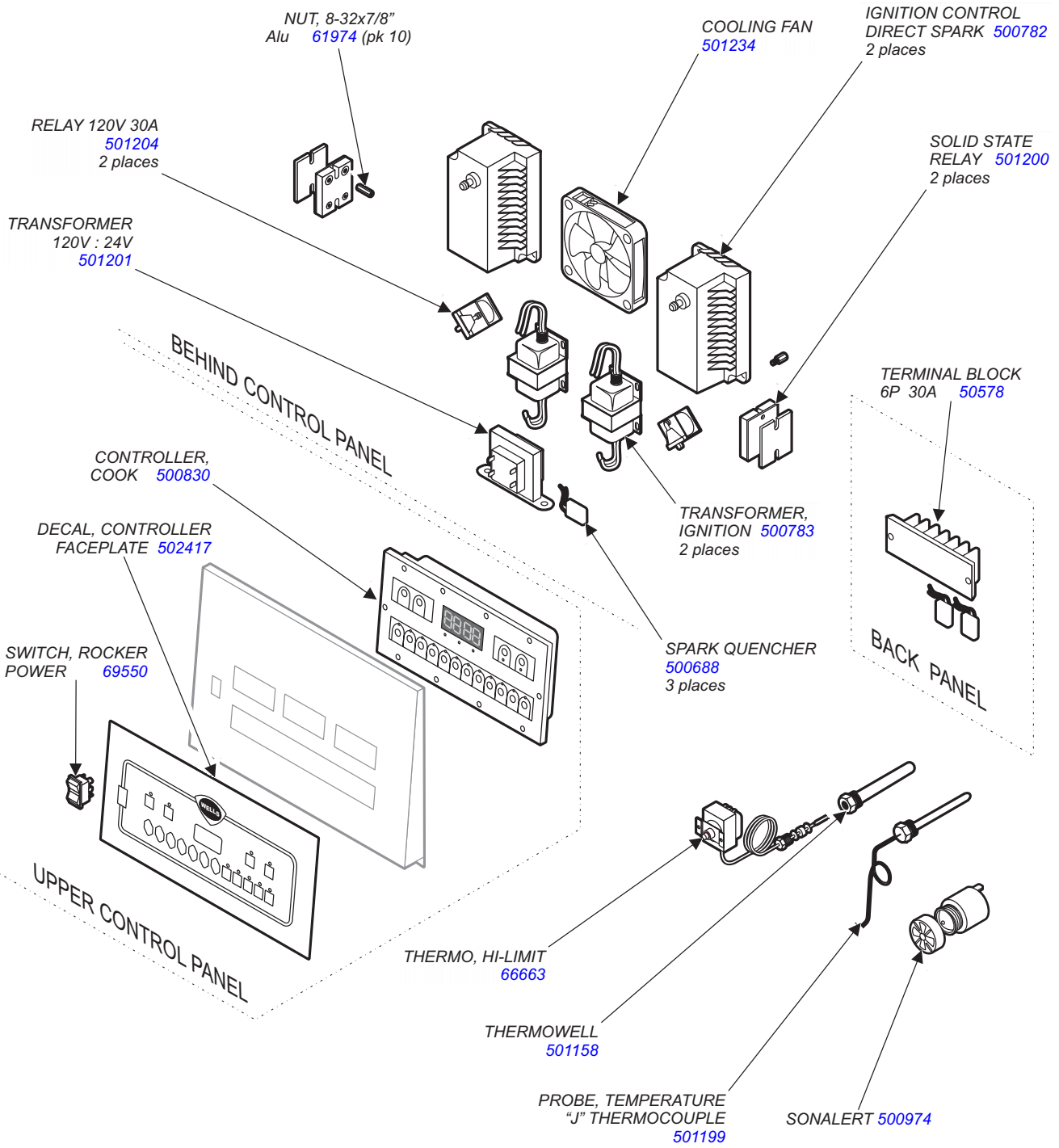
PL371 Parts List for WFGA-60FS

WFGA-60FS Cabinet Components



PL371 Parts List for WFGA-60FS

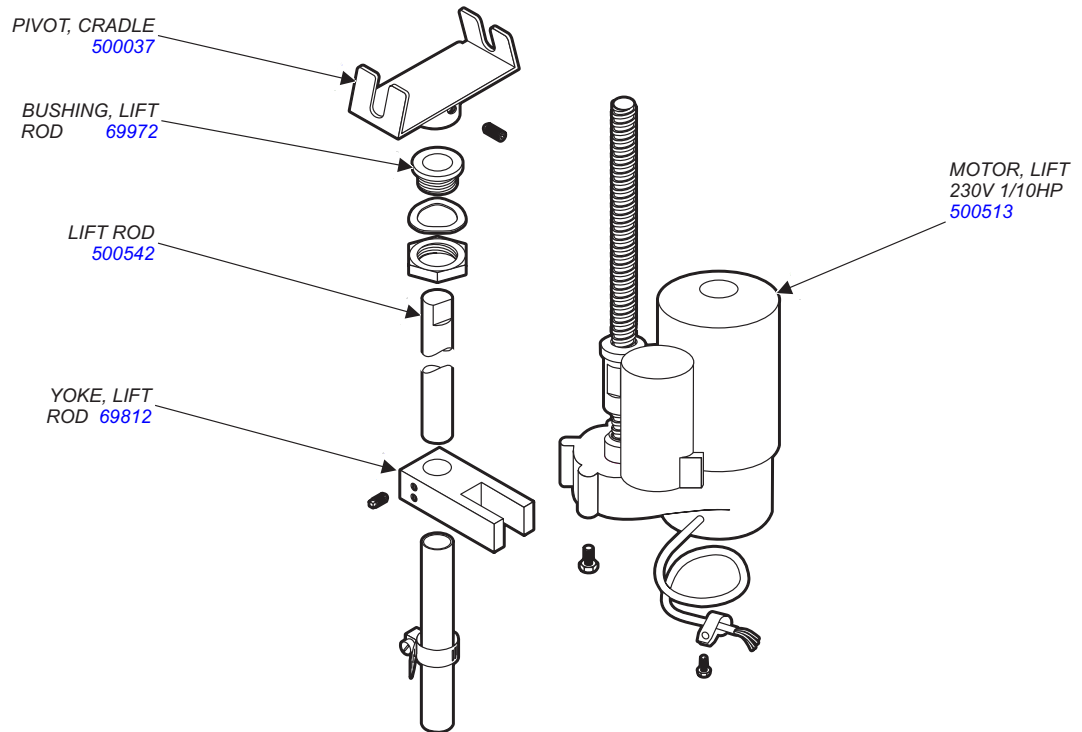
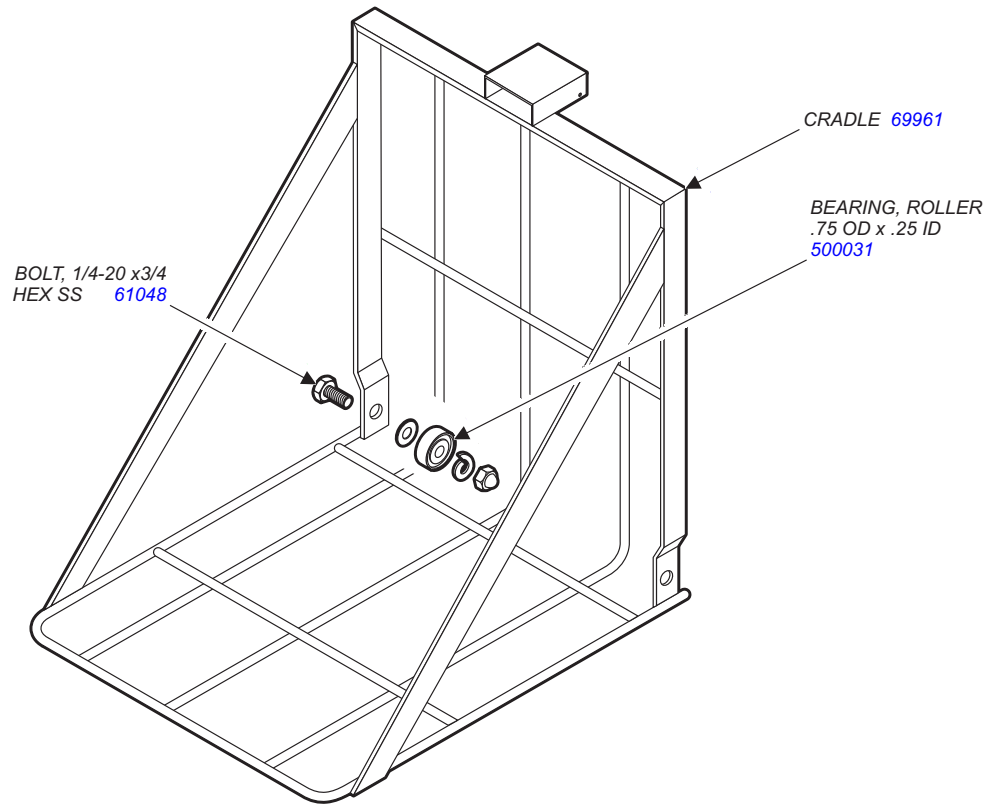
WFGA-60FS Electrical Components



PL371 Parts List for WFGA-60FS

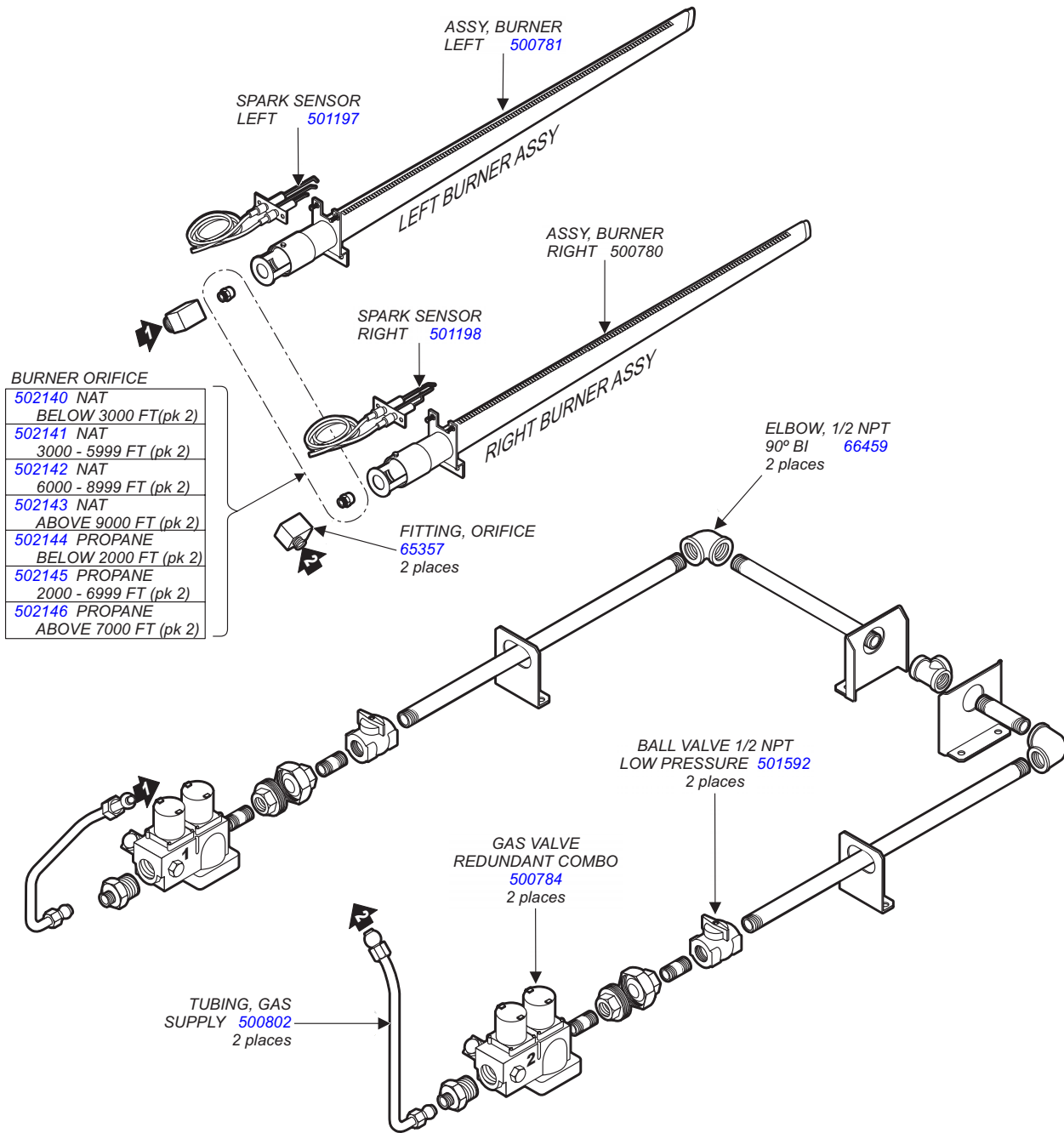
DRAFT

WFGA-60FS Auto-Lift Components



PL371 Parts List for WFGA-60FS

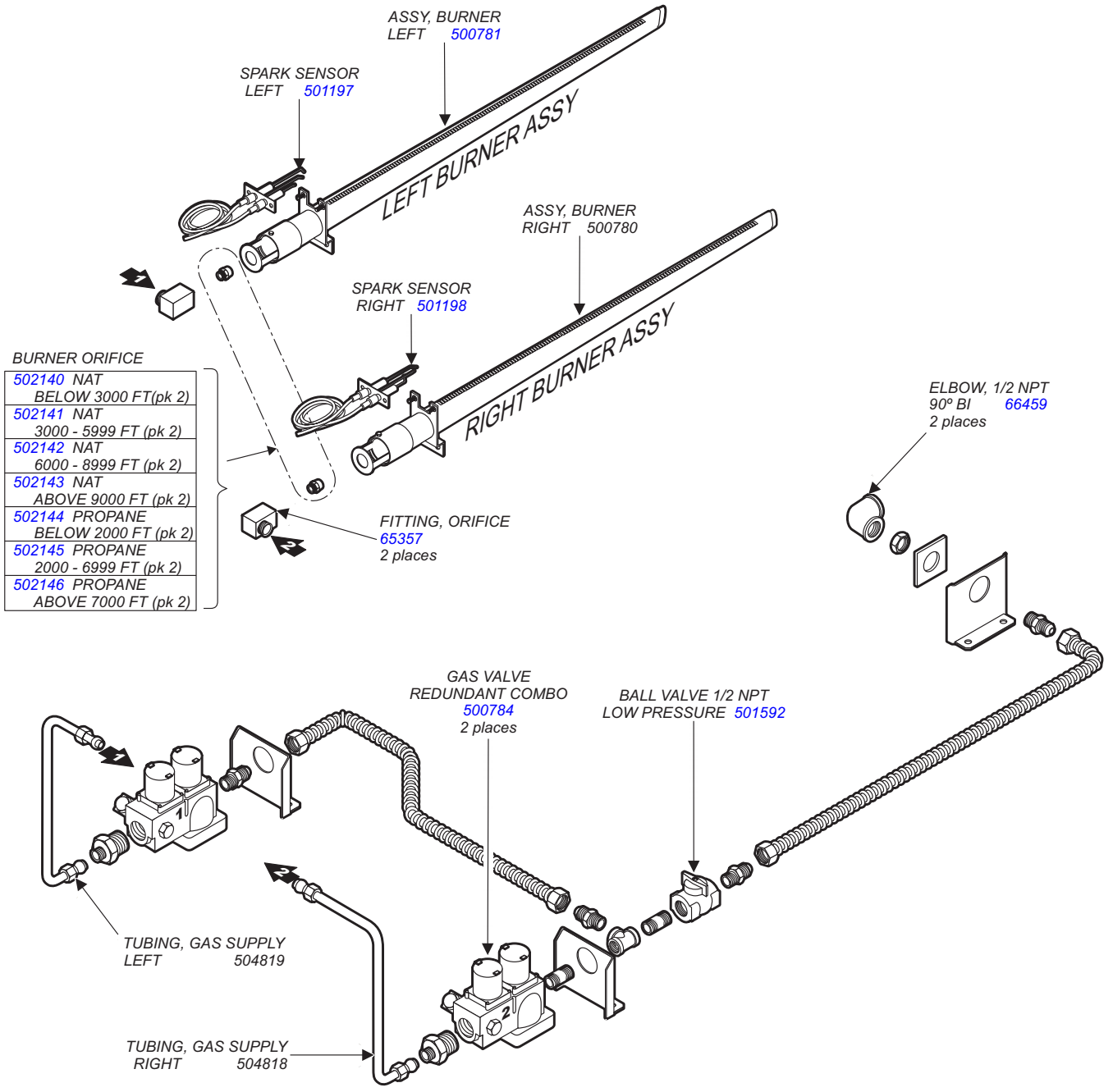
WFGA-60FS Burner System Components (Early Solid Piping)



PL371 Parts List for WFGA-60FS

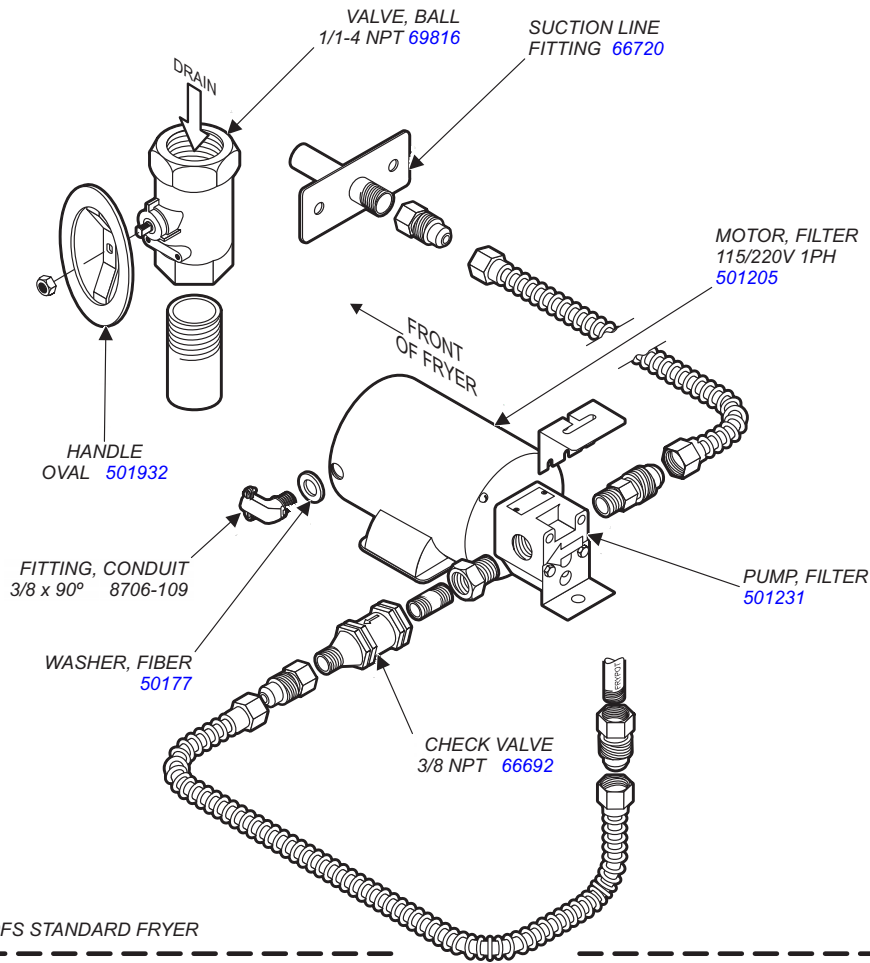
DRAFT

WFGA-60FS Burner System Components (Current Flex Tubing System)



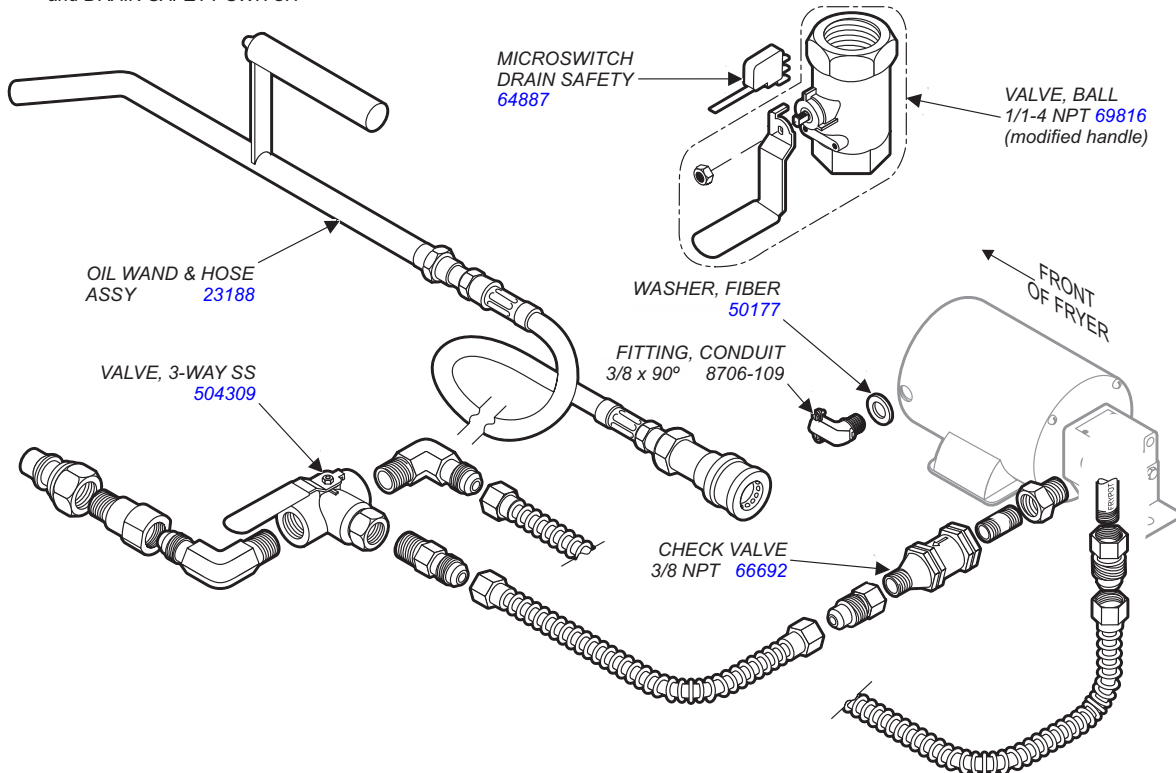
PL371 Parts List for WFGA-60FS

WFGA-60FS Filter System Components



WFGA-60FS STANDARD FRYER

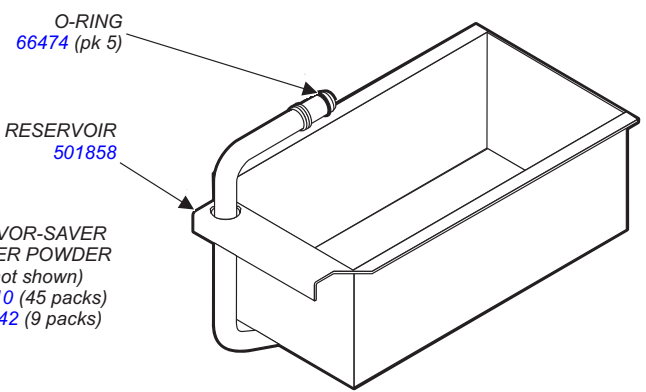
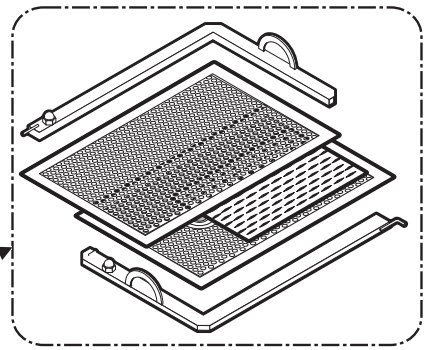
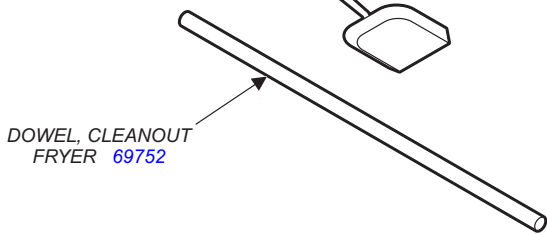
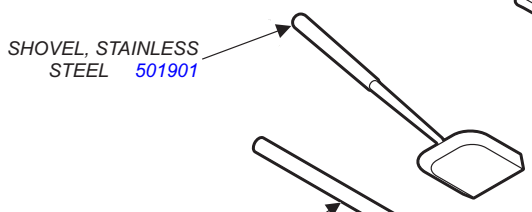
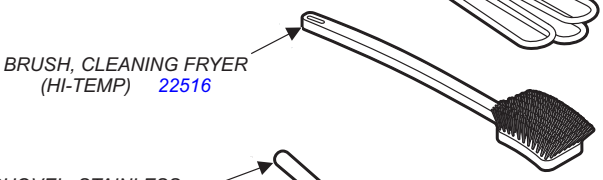
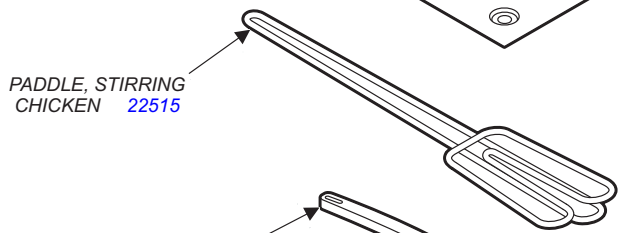
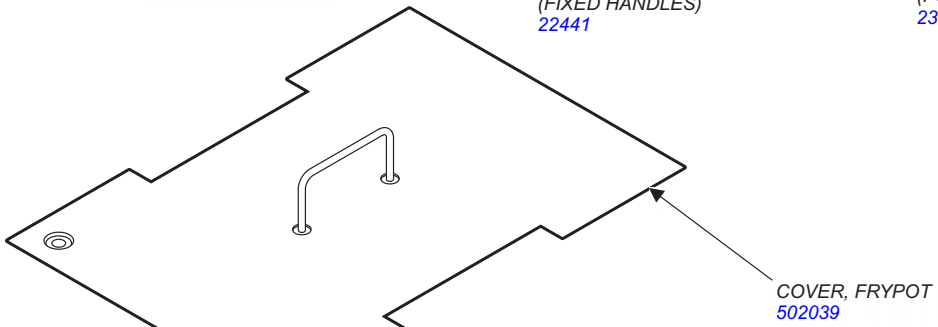
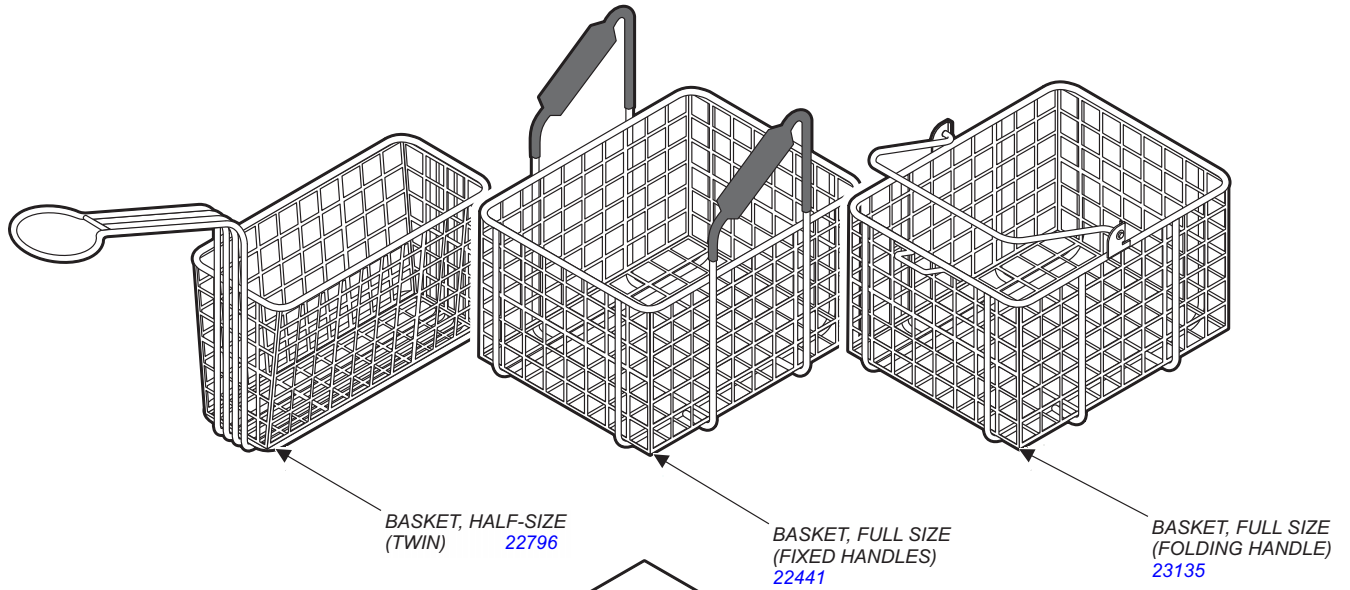
WFGA-60FS FRYER w/ FILTER WAND OPTION and DRAIN SAFETY SWITCH



PL371 Parts List for WFGA-60FS

DRAFT

WFGA-60FS Accessories & Removable Components



PL371 Parts List for WFGA-60FS



*Wells Manufacturing proudly supports CFESA
Commercial Food Equipment Service Association*

SERVICE TRAINING - QUALITY SERVICE



CUSTOMER SATISFACTION



WELLS

WELLS BLOOMFIELD
A Division of Carrier Commercial Refrigeration, Inc.
2 ERIK CIRCLE, P. O. Box 280 Verdi, NV 89439
telephone: 888-492-2782
fax: 888-492-2783
www.wellsbloomfield.com

PRINTED IN UNITED STATES OF AMERICA