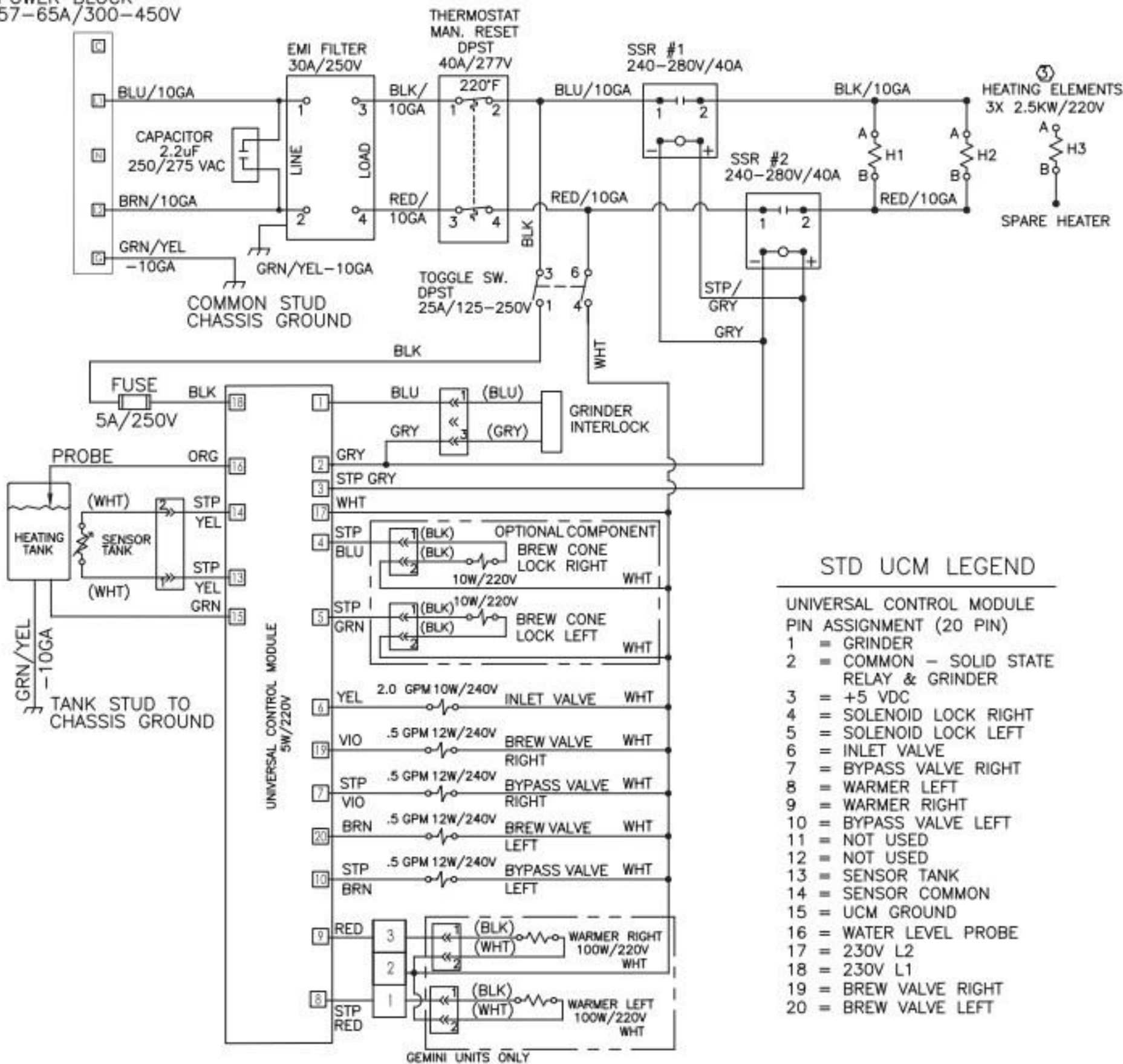


INCOMING POWER  
230Vac 1PH  
2W+G 50/60 Hz

POWER BLOCK  
57-65A/300-450V



### STD UCM LEGEND

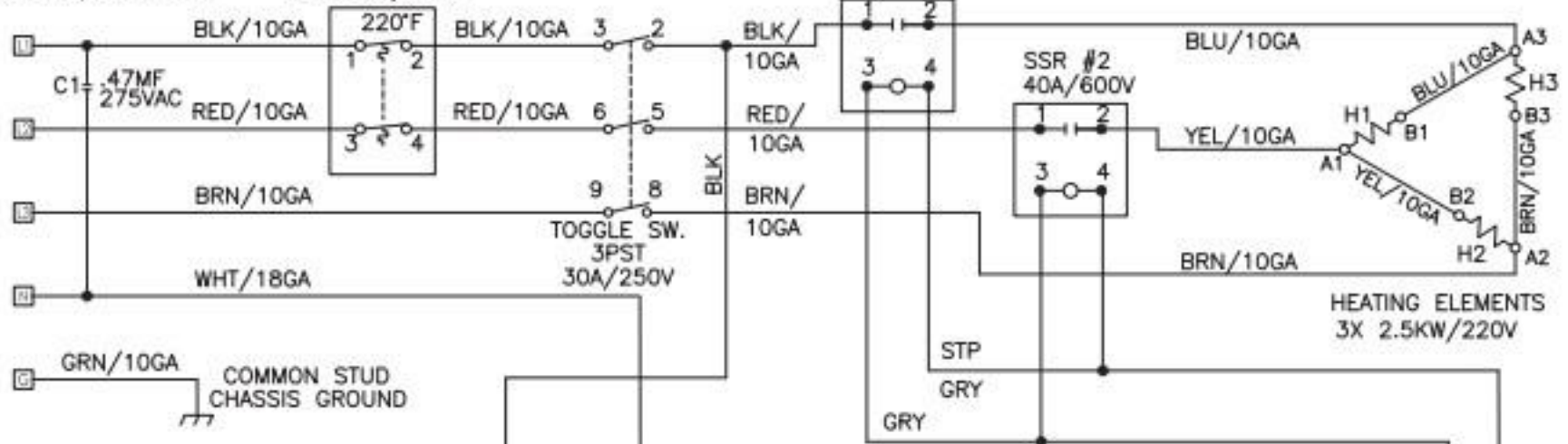
- UNIVERSAL CONTROL MODULE  
PIN ASSIGNMENT (20 PIN)
- 1 = GRINDER
  - 2 = COMMON - SOLID STATE RELAY & GRINDER
  - 3 = +5 VDC
  - 4 = SOLENOID LOCK RIGHT
  - 5 = SOLENOID LOCK LEFT
  - 6 = INLET VALVE
  - 7 = BYPASS VALVE RIGHT
  - 8 = WARMER LEFT
  - 9 = WARMER RIGHT
  - 10 = BYPASS VALVE LEFT
  - 11 = NOT USED
  - 12 = NOT USED
  - 13 = SENSOR TANK
  - 14 = SENSOR COMMON
  - 15 = UCM GROUND
  - 16 = WATER LEVEL PROBE
  - 17 = 230V L2
  - 18 = 230V L1
  - 19 = BREW VALVE RIGHT
  - 20 = BREW VALVE LEFT

GEMINI UNITS ONLY

POWER BLOCK  
57-65A/300-450V

THERMOSTAT  
MAN. RESET  
DPST 40A/277V

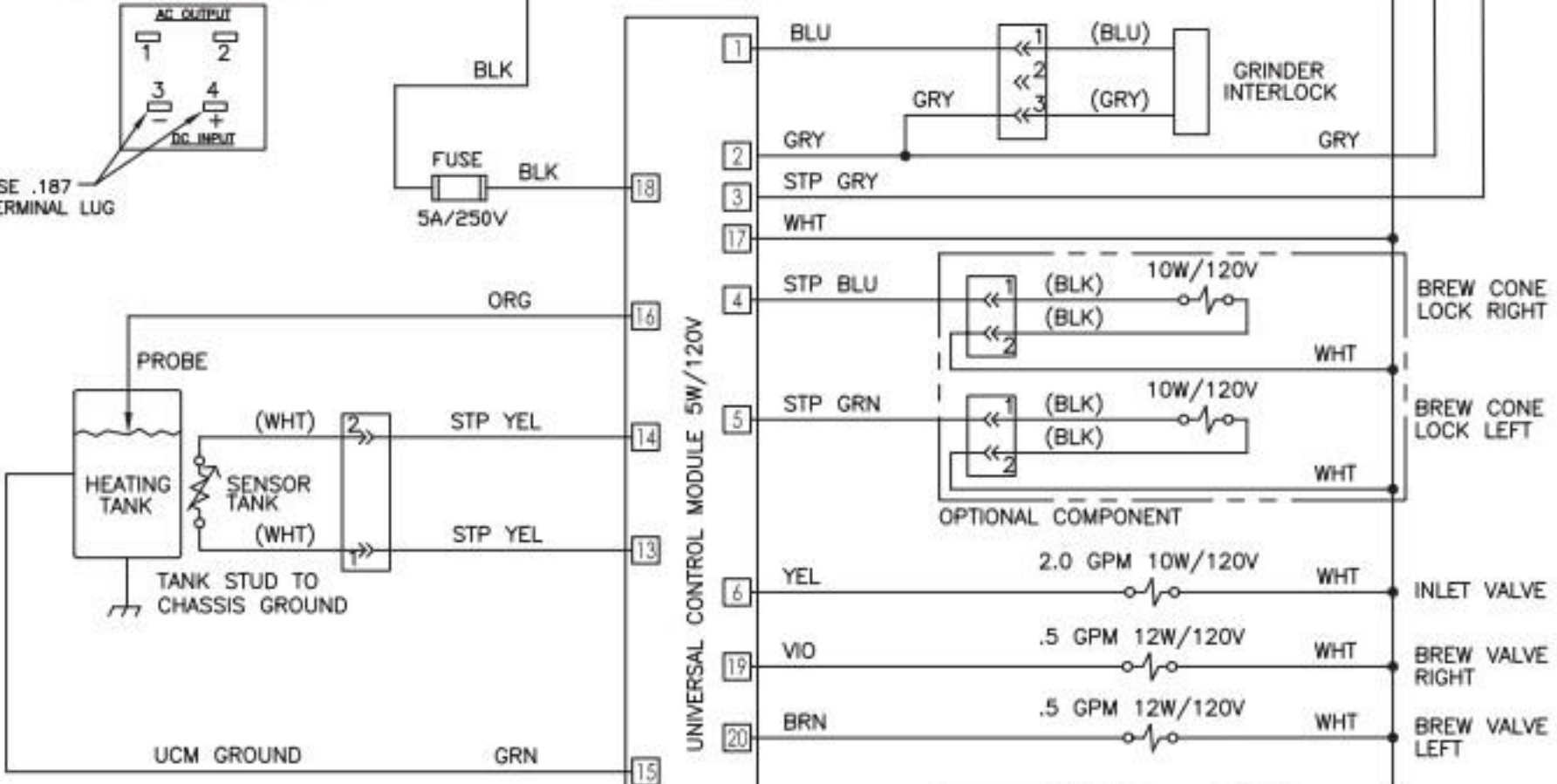
SSR #1  
40A/600V



SSR\_PIN ASSIGNMENTS



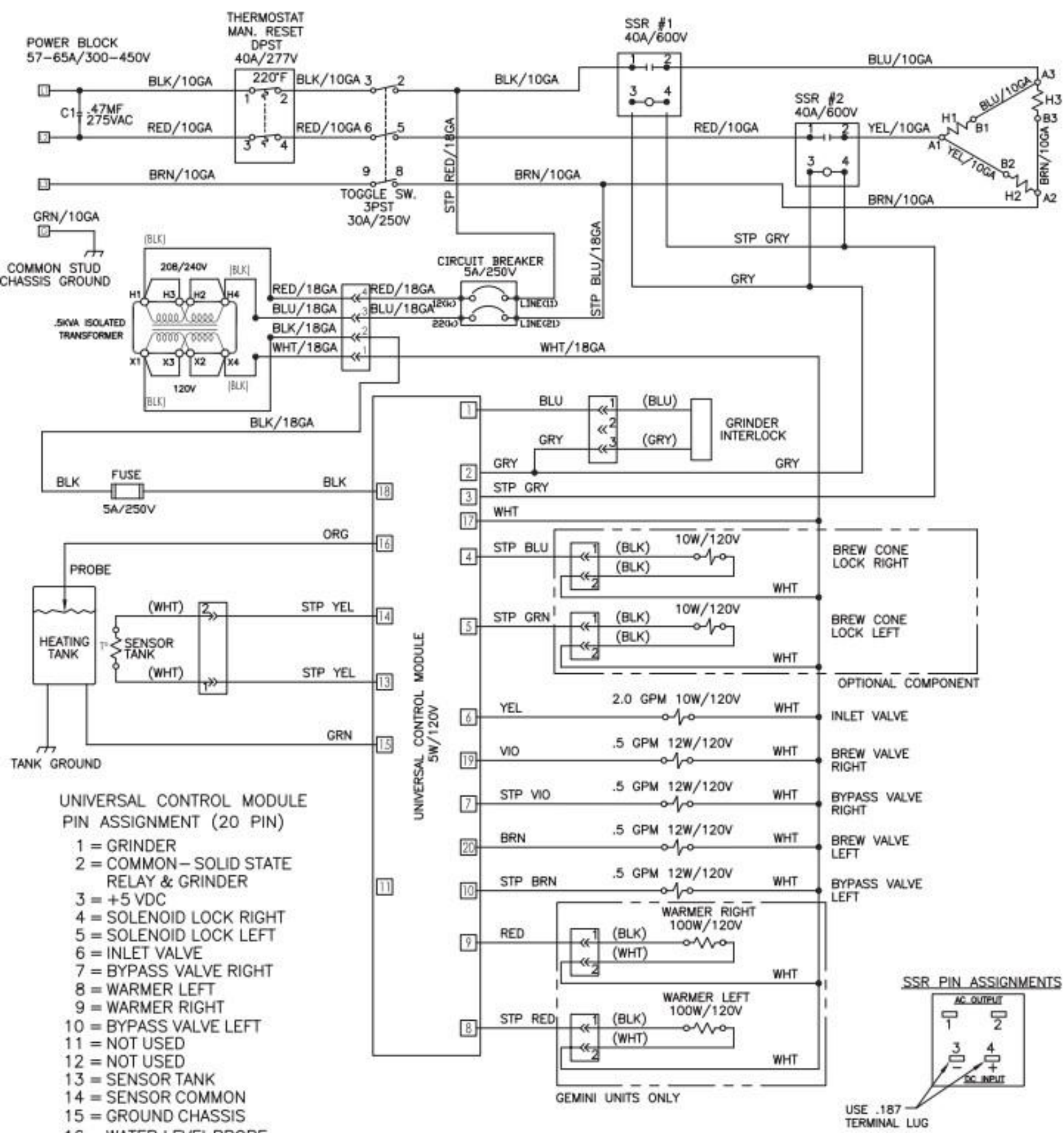
USE .187  
TERMINAL LUG

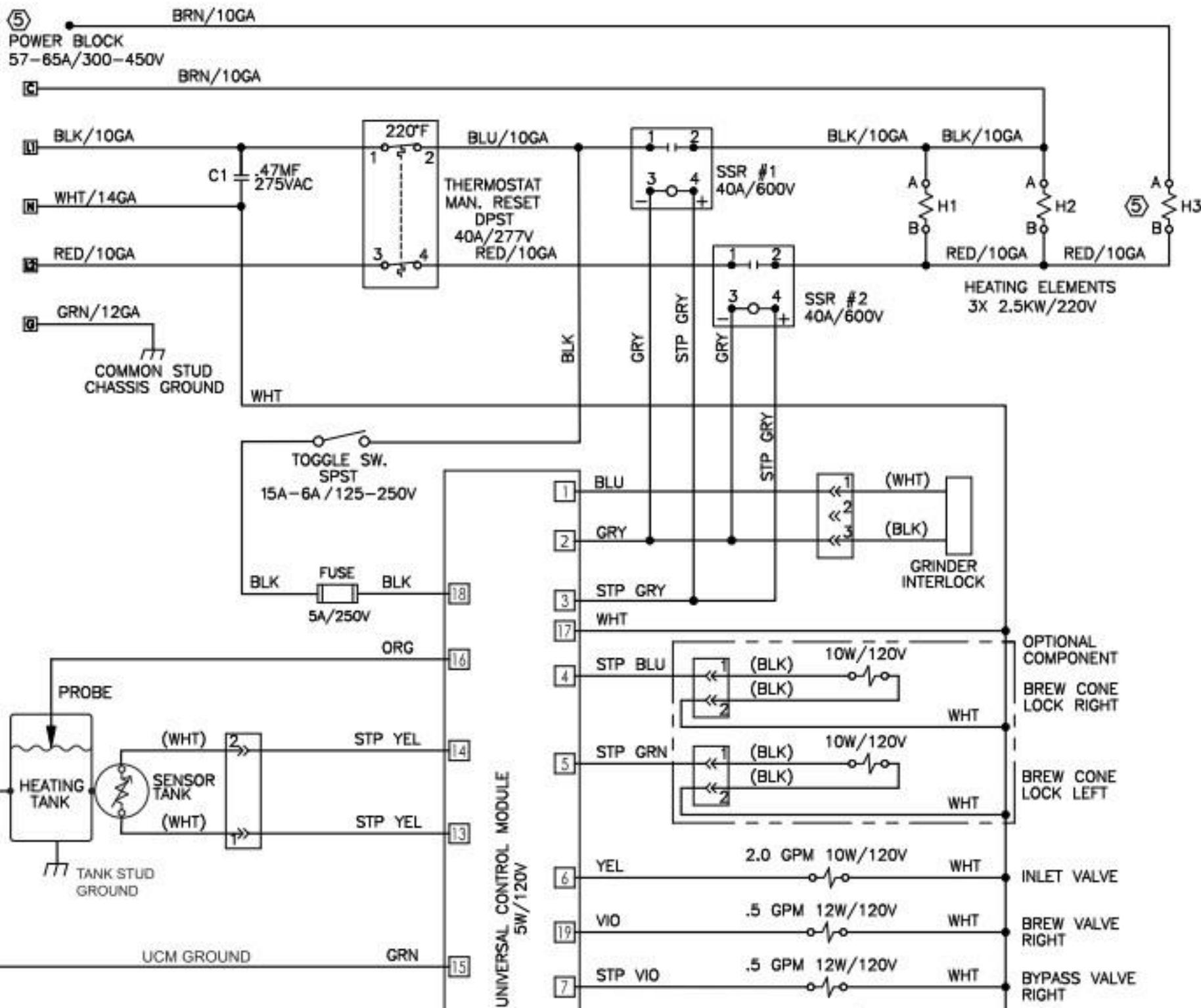


UNIVERSAL CONTROL MODULE  
PIN ASSIGNMENT (20 PIN)

- |  |                        |
|--|------------------------|
| 1 = GRINDER                              | 11 = NOT USED          |
| 2 = COMMON - SOLID STATE RELAY & GRINDER | 12 = NOT USED          |
| 3 = +5 VDC                               | 13 = SENSOR TANK       |
| 4 = SOLENOID LOCK RIGHT                  | 14 = SENSOR COMMON     |
| 5 = SOLENOID LOCK LEFT                   | 15 = UCM GROUND        |
| 6 = INLET VALVE                          | 16 = WATER LEVEL PROBE |
| 7 = BYPASS VALVE RIGHT                   | 17 = 120VAC RETURN     |
|  | 18 = 120VAC HOT        |

GEMINI UNITS ONLY





**LEGEND**

UNIVERSAL CONTROL MODULE  
PIN ASSIGNMENT (20 PIN)

1 = GRINDER (NOT USED ON TP1T/TP1TT)

2 = COMMON - SOLID STATE RELAY & GRINDER

3 = +5 VDC

4 = SOLENOID LOCK RIGHT (NOT USED ON TP1T/TP1TT)

5 = SOLENOID LOCK LEFT (NOT USED ON TP1T/TP1TT)

6 = INLET VALVE

7 = BYPASS VALVE RIGHT

8 = WARMER LEFT

9 = WARMER RIGHT

10 = BYPASS VALVE LEFT

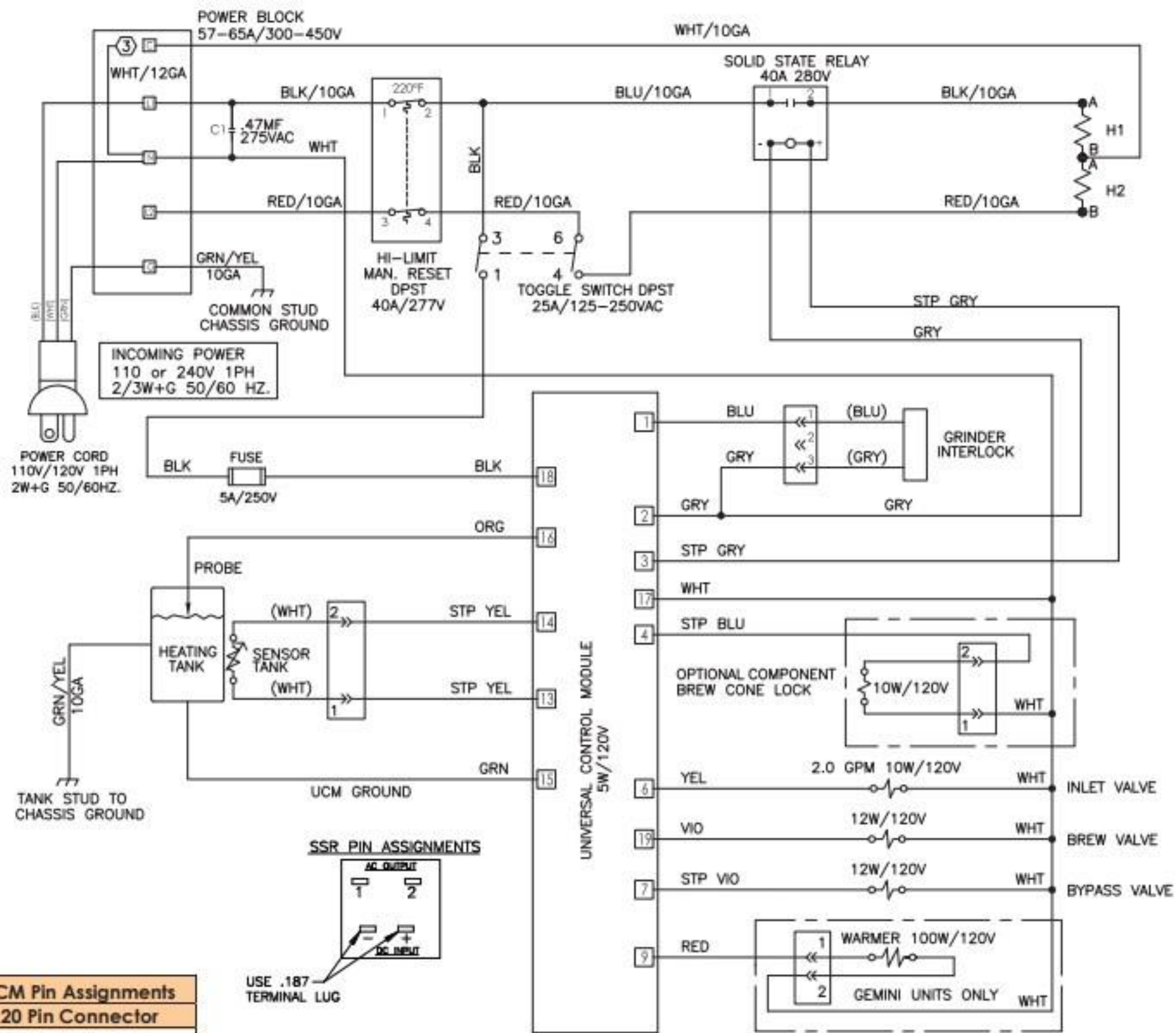
11 = SENSOR WARMER RIGHT (NOT USED ON TP1T/TP1TT)

12 = SENSOR WARMER LEFT (NOT USED ON TP1T/TP1TT)

13 = SENSOR TANK

14 = SENSOR COMMON

15 = GROUND CHASSIS



**CM Pin Assignments**  
**20 Pin Connector**  
GRINDER INTERLOCK

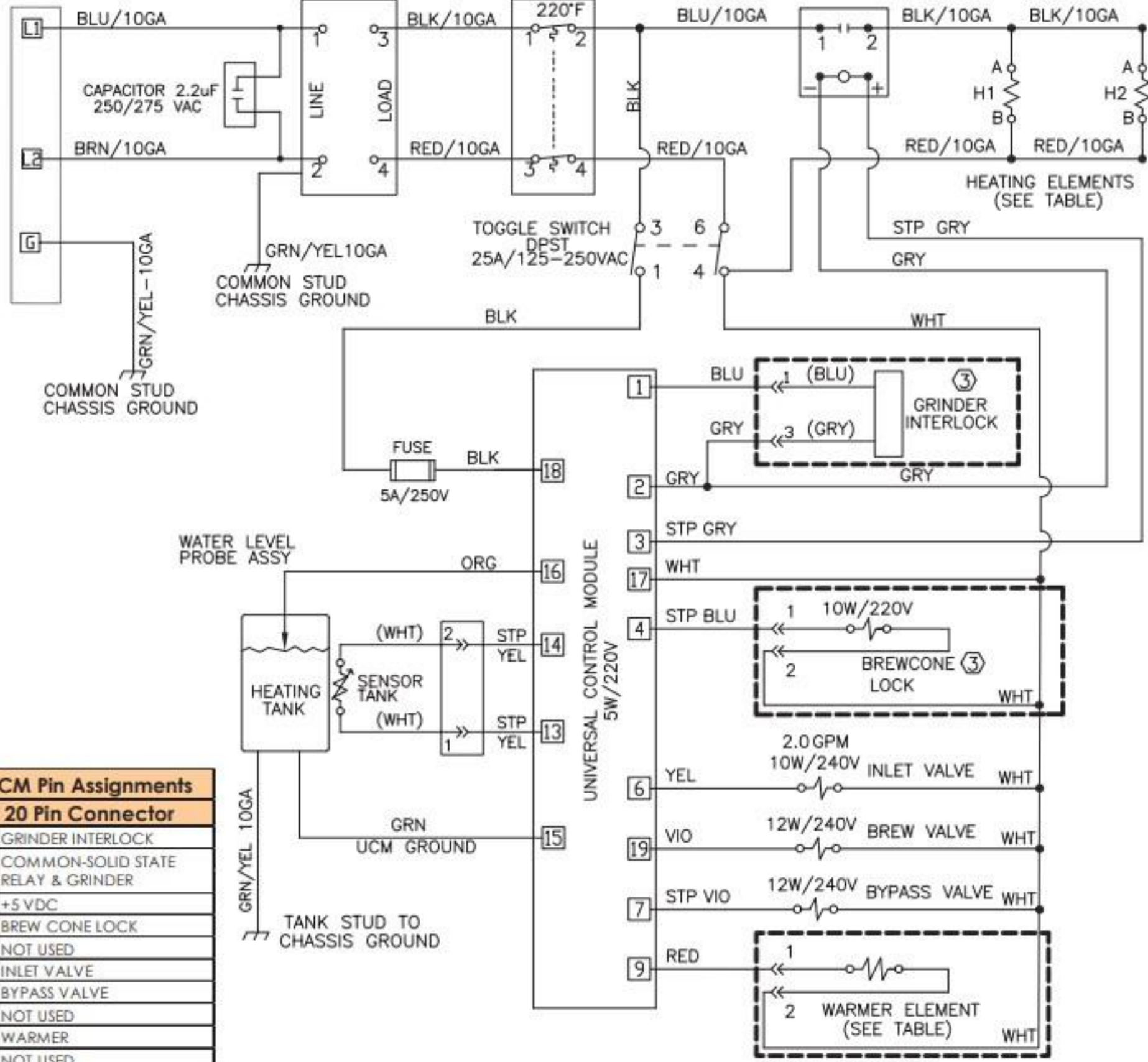
INCOMING POWER  
220-240VAC 1PH  
2W+G 50/60 Hz

POWER BLOCK  
57-65A/300-450V

EMI FILTER  
30A/250V

HI-LIMIT MAN. RESET  
DPST40A/277V

SOLID STATE RELAY  
40A/280V



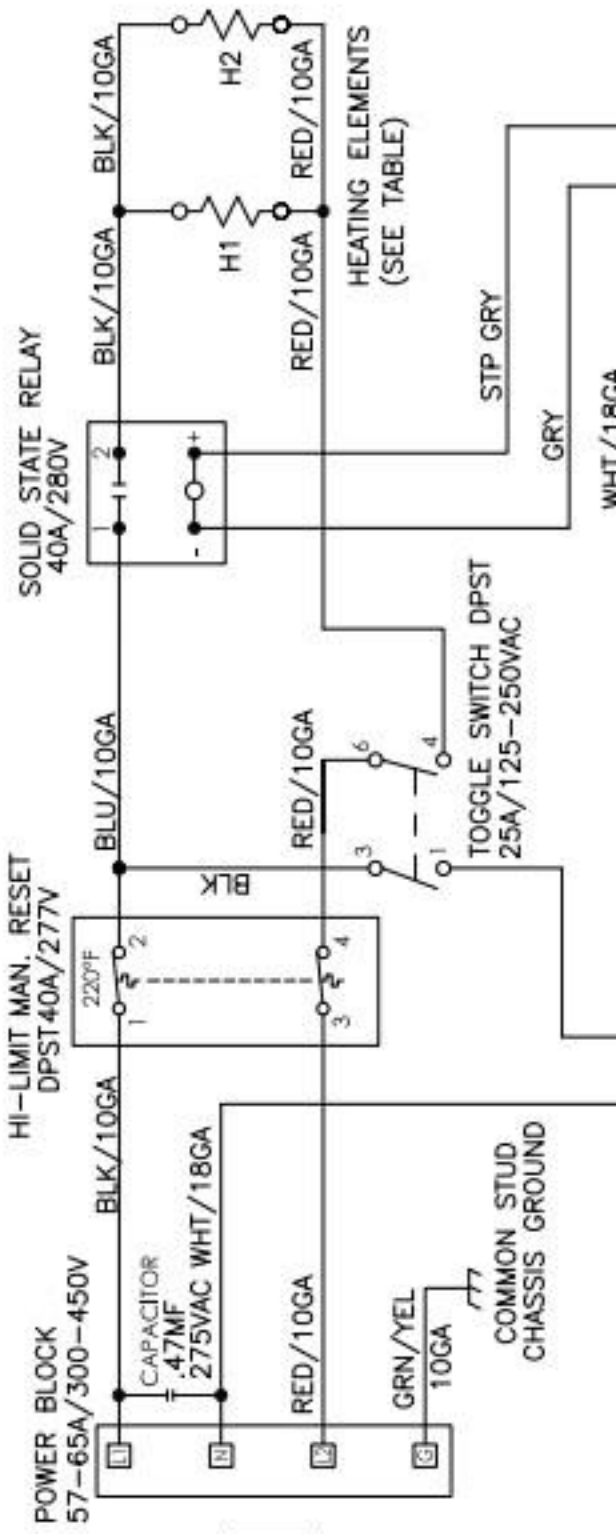
**UCM Pin Assignments**

**20 Pin Connector**

|    |                                    |
|----|------------------------------------|
| 1  | GRINDER INTERLOCK                  |
| 2  | COMMON-SOLID STATE RELAY & GRINDER |
| 3  | +5 VDC                             |
| 4  | BREW CONE LOCK                     |
| 5  | NOT USED                           |
| 6  | INLET VALVE                        |
| 7  | BYPASS VALVE                       |
| 8  | NOT USED                           |
| 9  | WARMER                             |
| 10 | NOT USED                           |
| 11 | NOT USED                           |

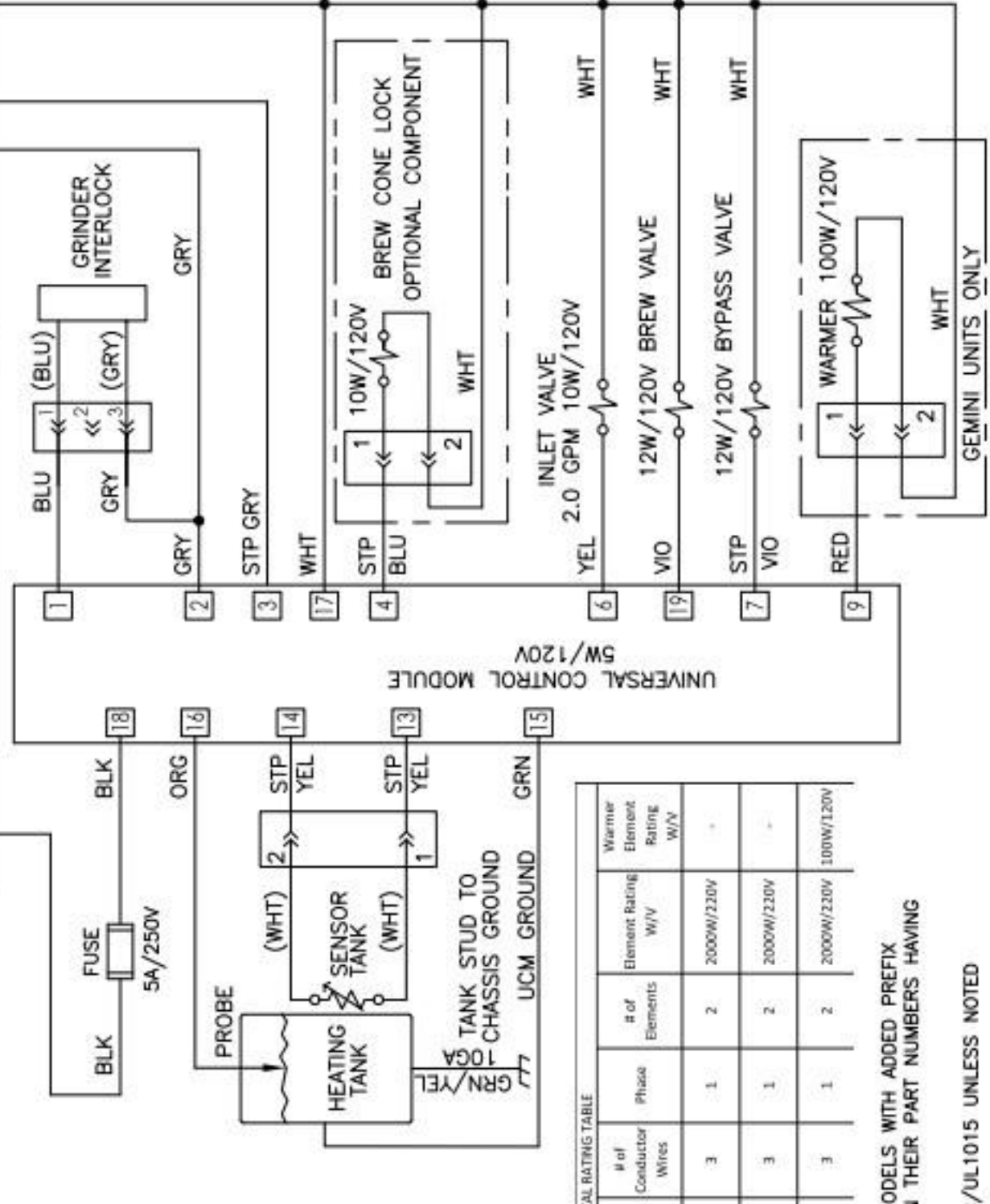
GEMINI UNITS ONLY

**INCOMING POWER**  
 208-240VAC 1PH  
 3W+G 50/60 HZ.



**18 Pin Assignments**

| 18 Pin Connector                   | 18 Pin Connector |
|------------------------------------|------------------|
| GRINDER INTERLOCK                  |                  |
| WARMER-SOLID STATE RELAY & GRINDER |                  |
| DC                                 |                  |
| BREW CONE LOCK                     |                  |
| USED                               |                  |
| T VALVE                            |                  |
| WASS VALVE                         |                  |
| USED                               |                  |
| TIMER                              |                  |
| USED                               |                  |
| USED                               |                  |
| USED                               |                  |
| K TEMPERATURE SENSOR               |                  |
| K TEMPERATURE SENSOR               |                  |
| GROUND                             |                  |
| WATER LEVEL PROBE                  |                  |
| NEUTRAL                            |                  |
| 111 HCF                            |                  |
| T VALVE                            |                  |
| USED                               |                  |



**ELECTRICAL RATING TABLE**

| Stage | Amps A | Watts W | Hertz Hz | # of Conductor Wires | Phase | # of Elements | Element Rating W/V | Warmer Element Rating W/V |
|-------|--------|---------|----------|----------------------|-------|---------------|--------------------|---------------------------|
| 08    | 18.3   | 3800    |          |                      |       |               |                    |                           |
| 20    | 19.5   | 4300    | 50/60    | 3                    | 1     | 2             | 2000W/220V         | -                         |
| 40    | 20.8   | 5000    |          |                      |       |               |                    |                           |
| 08    | 18.5   | 3800    |          |                      |       |               |                    |                           |
| 20    | 19.5   | 4300    | 50/60    | 3                    | 1     | 2             | 2000W/220V         | -                         |
| 40    | 21.3   | 5000    |          |                      |       |               |                    |                           |
| 08    | 18.5   | 3850    |          |                      |       |               |                    |                           |
| 20    | 19.5   | 4300    | 50/60    | 3                    | 1     | 2             | 2000W/220V         | 100W/120V                 |
| 40    | 21.5   | 5150    |          |                      |       |               |                    |                           |

DIAGRAM FOR ALL OTHER MODELS WITH ADDED PREFIX  
 //OR SUFFIX NUMBERS ON THEIR PART NUMBERS HAVING  
 ELECTRICAL RATINGS.

SHALL BE MIN. 18AWG PVC/UL1015 UNLESS NOTED  
 OTHERWISE SPECIFIED