

ITEM NO.	DESCRIPTION	MODEL 9910	QTY. PER UNIT
MOUNT ASSEMBLY		.249C026S07	1
*1	.STOPPER ASSY.	00-80-098	1
*2	.SINKFLANGE	.249C026PO7	1
*3	.RUBBER GASKET.	269C031P01	1
*4	.PROTECTOR RING	01-11-752	1
*5	.SCREW (IN A BAG)	01-16-641	3
*6	.MOUNT RING	01-11-696	1
*7	.HUSH CUSHION CLAMP	.142C009PO1	1
*8	.HUSH CUSHION	.614C077P01	1
9	.OUTLET SCREW	.636C017P03	2
10	.OUTLET FLANGE	.249C009P01	1
11	.OUTLET ELBOW	.673C015P01	1
12	.RUBBER OUTLET GASKET	.269C038P01	1
13	.GRIND RING	.614C066P03	2
DRAIN HOUSING ASSEMBLY		.311C080S03	1
*14	.DRAIN HOUSING.	.311C080P01	1
*15	.THRUST WASHER	.789C041P01	1
*16	.WATER SEAL	.645C006P01	1
*17	.SPACER SEAL	.102C005P01	1
*18	.SLINGER	.789C034P04	1
TURNTABLE ASSEMBLY		.258C032S01	1
*19	.O-RING	.645C004P01	1
*20	.TURNTABLE	.258C032P01	1
21	.HOPPER ASSEMBLY	.311C096S01	1
22	.HOPPER SCREW	.636C023P01	4
23	.WASHER	.789C035P02	1
24	.ARMATURE ASSEMBLY	.626C035P02	1
25	.MOTOR STUD	.687C003P01	1
26	.MOTOR STUD	.687C003P02	1
27	.MOTOR SHELL ASSEMBLY	.681C031S12	1
ENDBELL ASSEMBLY		.311C081S01	1
*28	.ENDBELL	.311C081S53	1
*29	.MOTOR BRUSH & BRUSH SPRING ASSEMBLY	.027C029S02	2
30	.NUT	.479C019P01	2
31	.INSPECTION PLATE	.554C032P01	1
32	.NUT	.479C021P01	1
33	.SHELL SCREW	.636C014P19	3
34	.LOWER SHELL	.806C050P07	1
35	.UPPER SHELL	.806C048PO7	1
†36	.SINKFLANGE GASKET (THICK)	.269C032PO1	1

†NOT SHOWN

\*PART OF AN ASSEMBLY, BUT CAN BE PURCHASED SEPARATELY.

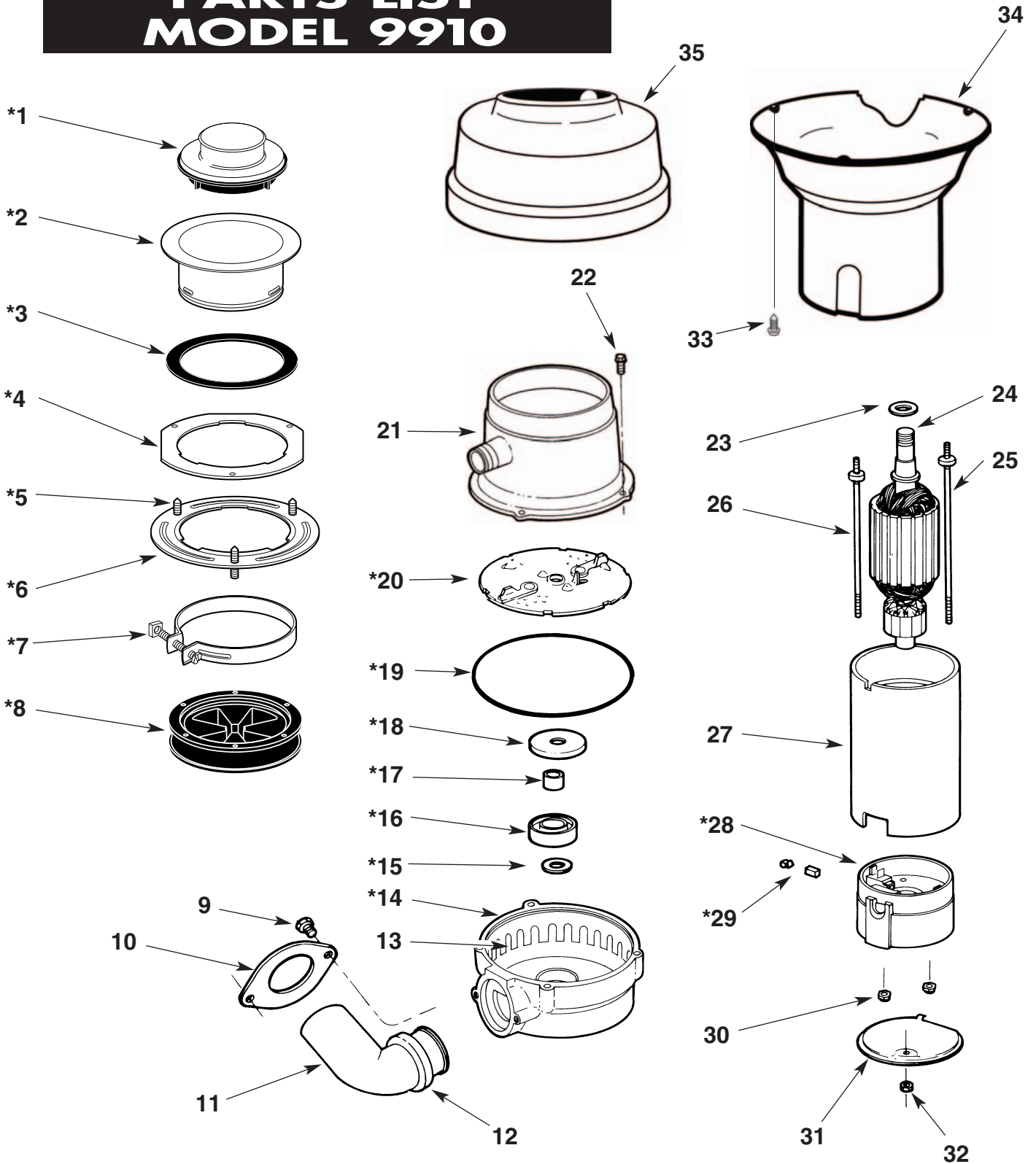


# Waste King

## Legend Series

by Anaheim Manufacturing Company

### PARTS LIST MODEL 9910



P.O. BOX 4146  
ANAHEIM, CA 92803 U.S.A.

\* PART OF AN ASSEMBLY, BUT CAN BE PURCHASED SEPARATELY.

ITEM NO.	DESCRIPTION	MODEL 9920	QTY. PER UNIT
	MOUNT ASSEMBLY	.249C026S07	.1
*1	.STOPPER	00-80-098	.1
*2	.SINKFLANGE & CAP ASSEMBLY	.249C026PO7	.1
*3	.RUBBER GASKET	269C031P01	.1
*4	.PROTECTOR RING	01-11-752	.1
*5	.SCREW (IN A BAG)	01-16-641	.3
*6	.MOUNT RING	01-11-696	.1
*7	.HUSH CUSHION CLAMP	.142C009PO1	.1
*8	.HUSH CUSHION	.614C077P01	.1
9	.OUTLET SCREW	.636C017P03	.2
10	.OUTLET FLANGE	.249C009P01	.1
11	.OUTLET ELBOW	.673C015P01	.1
12	.RUBBER OUTLET GASKET	.269C038P01	.1
13	.GRIND RING	.614C066P03	.2
	DRAIN HOUSING ASSEMBLY	.311C080S03	.1
*14	.DRAIN HOUSING	.311C080P01	.1
*15	.THRUST WASHER	.789C041P01	.1
*16	.WATER SEAL	.645C006P01	.1
*17	.SPACER SEAL	.102C005P01	.1
	TURNTABLE ASSEMBLY	.258C032SO1	.1
*18	.SLINGER	.789C034P04	.1
*19	.O-RING	.645C004P01	.1
*20	.TURNTABLE	.258C032P01	.1
21	.HOPPER ASSEMBLY	.311C096S01	.1
22	.HOPPER SCREW	.636C023P01	.4
23	.WASHER	.789C035P02	.1
24	.ARMATURE ASSEMBLY	.626C035P03	.1
25	.STUD MOTOR	.687C003P01	.1
26	.STUD MOTOR	.687C003P02	.1
27	.MOTOR SHELL ASSEMBLY	.681C031S12	.1
	ENDBELL ASSEMBLY	.311C081S02	.1
*28	.ENDBELL	.311C081S53	.1
*29	.BRUSH MOTOR & SPRING BRUSH ASSEMBLY	.027C029S02	.2
30	.NUT	.479C019P01	.2
31	.INSPECTION PLATE	.554C032P01	.1
32	.NUT	.479C021P01	.1
33	.UPPER SHELL	.806C048P07	.1
34	.LOWER SHELL	.806C050P07	.1
35	.SHELL SCREW	.636C014P19	.3
†36	.SINKFLANGE GASKET-WAXED (THICK)	.269C032P01	.1

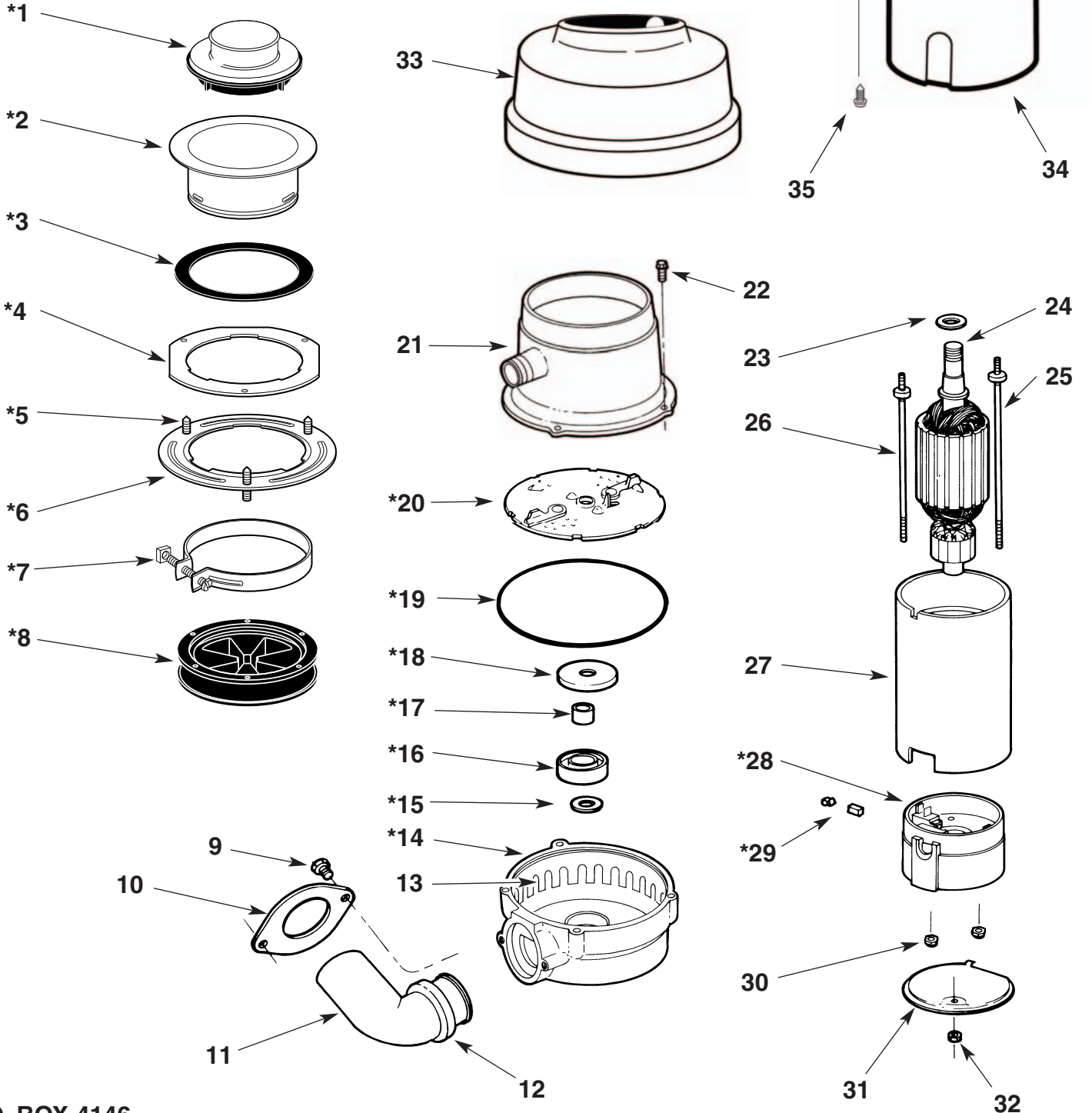
†NOT SHOWN

\*PART OF AN ASSEMBLY, BUT CAN BE PURCHASED SEPARATELY.



**Waste King**  
*Legend Series*  
by Anaheim Manufacturing Company

**PARTS LIST  
MODEL 9920**



P.O. BOX 4146  
ANAHEIM, CA 92803 U.S.A.

\* PART OF AN ASSEMBLY, BUT CAN BE PURCHASED SEPARATELY.

ITEM NO.	DESCRIPTION	MODEL 9930	QTY. PER UNIT
MOUNT ASSEMBLY		.249C026S07	1
*1	.STOPPER	.00-80-098	1
*2	.SINKFLANGE & CAP ASSEMBLY.	.249C026PO7	1
*3	.RUBBER GASKET.	.269C031P01	1
*4	.PROTECTOR RING	.01-11-752	1
*5	.SCREW (IN A BAG)	.01-16-641	3
*6	.MOUNT RING	.01-11-696	1
*7	.HUSH CUSHION CLAMP	.142C009PO1	1
*8	.HUSH CUSHION	.614C077P01	1
9	.OUTLET SCREW	.636C017P03	2
10	.OUTLET FLANGE	.249C009P01	1
11	.OUTLET ELBOW	.673C015P01	1
12	.RUBBER OUTLET GASKET	.269C038P01	1
13	.GRIND RING	.614C066PO2	1
DRAIN HOUSING ASSEMBLY		.311C080S02	1
*14	.DRAIN HOUSING.	.311C080P01	1
*15	.THRUST WASHER	.789C041P01	1
*16	.WATER SEAL	.645C006P01	1
*17	.SPACER SEAL	.102C005P01	1
TURNTABLE ASSEMBLY		.258C032S02	1
*18	.SLINGER	.789C034P03	1
*19	.O-RING	.645C004P01	1
*20	.TURNTABLE	.258C032P02	1
21	.HOPPER ASSEMBLY.	.311C096S01	1
22	.HOPPER SCREW	.636C023P01	4
23	.WASHER	.789C035P02	1
24	.ARMATURE ASSEMBLY.	.626C035P03	1
25	.MOTOR STUD	.687C003P01	1
26	.MOTOR STUD	.687C003P02	1
27	.MOTOR SHELL ASSEMBLY.	.681C031S12	1
ENDBELL ASSEMBLY		.311C081S02	1
*28	.ENDBELL	.311C081S53	1
*29	.MOTOR BRUSH & BRUSH SPRING ASSEMBLY	.027C029S02	2
30	.NUT	.479C019P01	2
31	.INSPECTION PLATE	.554C032P01	1
32	.NUT	.479C021P01	1
33	.UPPER SHELL	.806C067P04	1
34	.LOWER SHELL	.806C068P04	1
35	.SHELL SCREW	.636C014P19	3
†36	.SINKFLANGE GASKET-WAXED (THICK)	.269C032P01	1

†NOT SHOWN

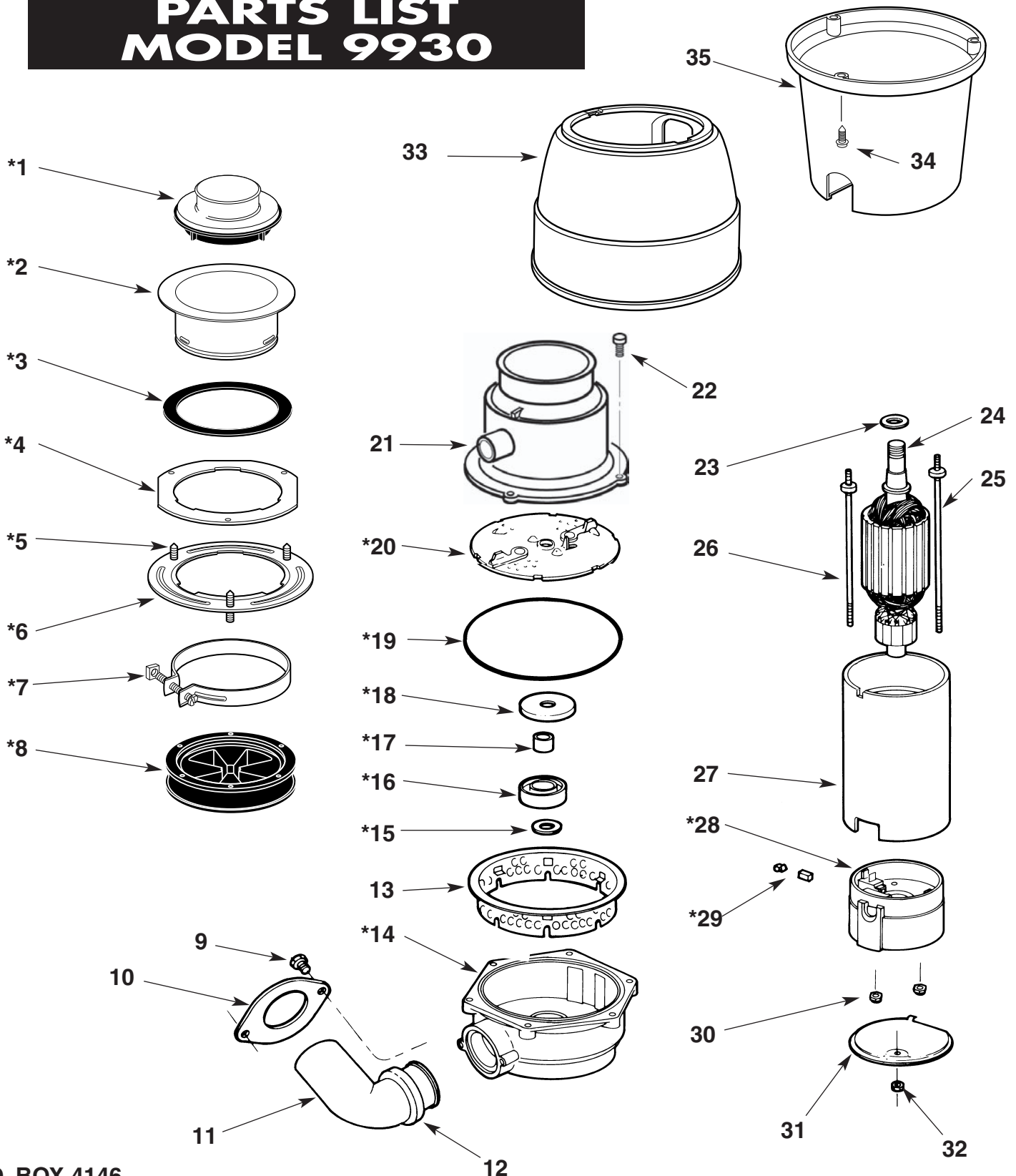
\*PART OF AN ASSEMBLY, BUT CAN BE PURCHASED SEPARATELY.



# Waste King Legend Series

by Anaheim Manufacturing Company

## PARTS LIST MODEL 9930



P.O. BOX 4146  
ANAHEIM, CA 92803 U.S.A.

\* PART OF AN ASSEMBLY, BUT CAN BE PURCHASED SEPARATELY.

## MODEL 9930TC

ITEM #	DESCRIPTION	PART #	QTY	ITEM #	DESCRIPTION	PART #	QTY
	MOUNT ASSEMBLY	.249C026S07BF	...1	34	.NUT	.479C021P01	...1
*1	.STOPPER ASSY	.174C072S01	...1	35	.UPPER SHELL	.806C067P51	...1
*2	.SINKFLANGE.	.249C026PO7	...1	36	.LOWER SHELL	.806C068P01	...1
*3	.RUBBER GASKET	.269C031P01	...1	37	.SHELL SCREW	.636C014P19	...3
*4	.PROTECTOR RING	.01-11-752	...1	38	.PLUNGER BUTTON	.106C004P01	...1
*5	.MOUNT RING	.01-11-696	...1	39	."O" RING	.614C027P01	...2
*6	.SCREW (IN A BAG)	.01-16-641	...3	40	.BUSHING	.102C003P02	...1
*7	.HUSH CUSHION CLAMP	.142C009P01	...1	41	."O" RING	.614C028P01	...1
*8	.HUSH CUSHION	.614C077P02	...1	42	.SCREW	.636C026P01	...4
9	.OUTLET SCREW	.636C017P03	...2	43	.COLLAR	.154C008P02	...1
10	.OUTLET FLANGE	.249C009P01	...1	44	.SWITCH COVER	.174C021P01	...1
11	.OUTLET ELBOW	.673C015P01	...1	45	.SCREW	.636C014P03	...3
12	.RUBBER OUTLET GASKET	.269C038P01	...1	46	.SCREW	.636C019P01	...2
13	.GRIND RING	.614C066P02	...2	47	.CHERRY SWITCH	.695C003P02	...1
	DRAIN HOUSING ASSEMBLY	.311C080S02	...1	48	.SWITCH BRACKET	.072C001P01	...1
*14	.DRAIN HOUSING.	.311C080P01	...1	49	.JAM NUT	.479C010P01	...1
*15	.THRUST WASHER	.789C041P01	...1	50	.SPRING	.675C001P01	...1
*16	.WATER SEAL	.645C006P01	...1	51	.WASHER	.789C011P01	...1
*17	.SPACER SEAL	.102C005P01	...1	52	.WASHER	.789C013P01	...1
	TURNTABLE ASSEMBLY	.258C032S02	...1	53	.RETAINER	.612C007P01	...2
*18	.SLINGER	.789C034P03	...1	54	.BUSHING	.287C002P01	...1
*19	.O-RING	.645C004P01	...1	55	.BUSHING	.102C004P01	...2
*20	.TURNTABLE	.258C032P02	...1	56	.CONNECTOR FLAG	.711C010P01	...2
21	.HOPPER ASSEMBLY	.311C076S01	...1	57	.CONDUIT CLAMP	.142C001P01	...1
22	.HOPPER SCREW	.636C023P01	...4	58	.GROUND SCREW	.636C015P18	...1
23	.ADAPTER	.614C061P02	...1	59	.CONDUIT	.163C003P02	...1
24	.GASKET	.269C014P01	...1	60	.LEAD WIRE (WHITE)	.299C008P11	...1
25	.WASHER	.789C035P02	...1	61	.LEAD WIRE (WHITE)	.299C008P10	...1
26	.ARMATURE ASSEMBLY.	.626C035P03	...1	62	.SPLICE	.711C009P01	...1
27	.MOTOR STUD	.687C003P01	...1	63	.GROUND WIRE	.299C005SO7	...1
28	.MOTOR STUD	.687C003P02	...1	64	.CONDUIT CLAMP	.142C002P01	...1
29	.MOTOR SHELL ASSEMBLY.	.681C031S12	...1	65	.SCREW	.636C014P18	...1
	ENDBELL ASSEMBLY	.311C081S22	...1	†66	.SINKFLANGE GASKET (THICK)	.269C032P01	...1
*30	.ENDBELL	.311C081S53	...1				
*31	.MTR. BRUSH & BRUSH SPRING ASSY	.027C029S02	...1				
32	.NUT	.479C019P01	...2				
33	.INSPECTION PLATE	.554C032P01	...1				

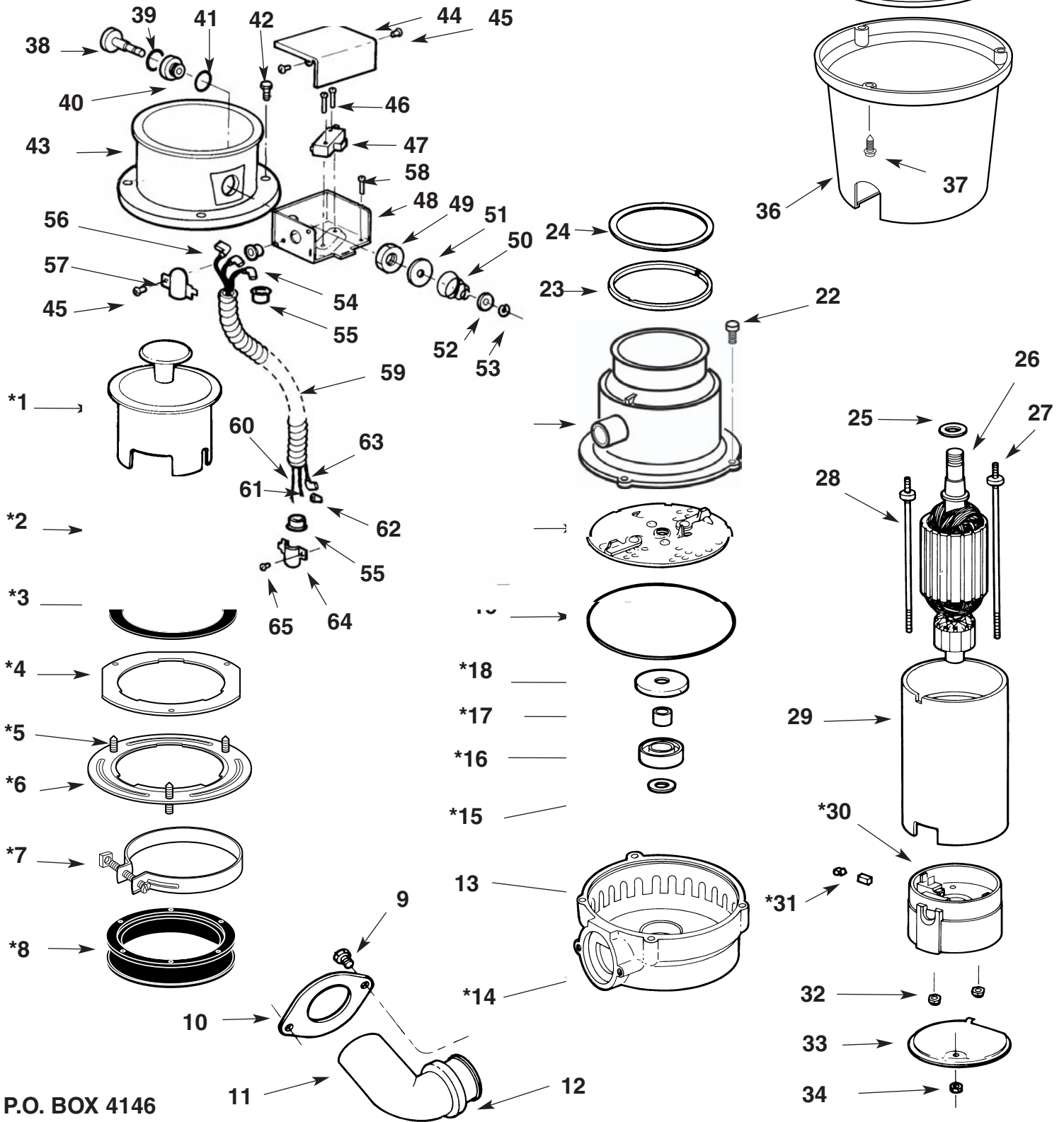
†NOT SHOWN

\*PART OF AN ASSEMBLY, BUT CAN BE PURCHASED SEPARATELY.



**Waste King**  
*Legend Series*  
 by Anaheim Manufacturing Company

**PARTS LIST  
 MODEL 9930TC**



P.O. BOX 4146  
 ANAHEIM, CA 92803 U.S.A.

\* PART OF AN ASSEMBLY, BUT CAN BE PURCHASED SEPARATELY.

ITEM NO.	DESCRIPTION	MODEL 9940	QTY. PER UNIT
MOUNT ASSEMBLY		.249C026S07	1
*1	.STOPPER	.00-80-098	1
*2	.SINKFLANGE & CAP ASSEMBLY	.249C026P07	1
*3	.RUBBER GASKET.	.269C031P01	1
*4	.PROTECTOR RING	.01-11-752	1
*5	.SCREW (IN A BAG)	.01-16-641	3
*6	.MOUNT RING	.01-11-696	1
*7	.HUSH CUSHION CLAMP	142C009P01	1
*8	.HUSH CUSHION	.614C077P01	1
9	.OUTLET SCREW	.636C017P03	2
10	.OUTLET FLANGE	.249C009P01	1
11	.OUTLET ELBOW	.673C015P01	1
12	.RUBBER OUTLET GASKET	.269C038P01	1
13	.GRIND RING	.614C060P01	1
DRAIN HOUSING ASSEMBLY		.311C082S01	1
*14	.DRAIN HOUSING	.311C082P01	1
*15	.THRUST WASHER	.789C041P01	1
*16	.WATER SEAL	.645C006P01	1
*17	.SPACER SEAL	.102C005P01	1
TURNTABLE ASSEMBLY		.258C032S04	1
*18	.SLINGER	.789C034P03	1
*19	.O-RING	.645C005P01	1
*20	.TURNTABLE.	.258C032P02	1
21	.HOPPER ASSEMBLY	.311C092S01	1
22	.HOPPER SCREW	.636C023P01	6
23	.WASHER	.789C035P02	1
24	.ARMATURE ASSEMBLY.	.626C035P05	1
25	.MOTOR STUD	.687C003P02	1
26	.MOTOR STUD	.687C003P03	1
27	.MOTOR SHELL ASSEMBLY.	.681C031S14	1
ENDBELL ASSEMBLY		.311C081S04	1
*28	.ENDBELL	.311C081S53	1
*29	.MOTOR BRUSH & BRUSH SPRING ASSEMBLY	.027C029S02	2
30	.NUT	.479C019P01	2
31	.INSPECTION PLATE	.554C032P01	1
32	.NUT	.479C021P01	1
33	.UPPER SHELL	.806C062P05	1
34	.LOWER SHELL	.806C063P05	1
35	.SHELL SCREW	.636C014P19	3
†36	.SINKFLANGE GASKET-WAXED (THICK)	.269C032P01	1

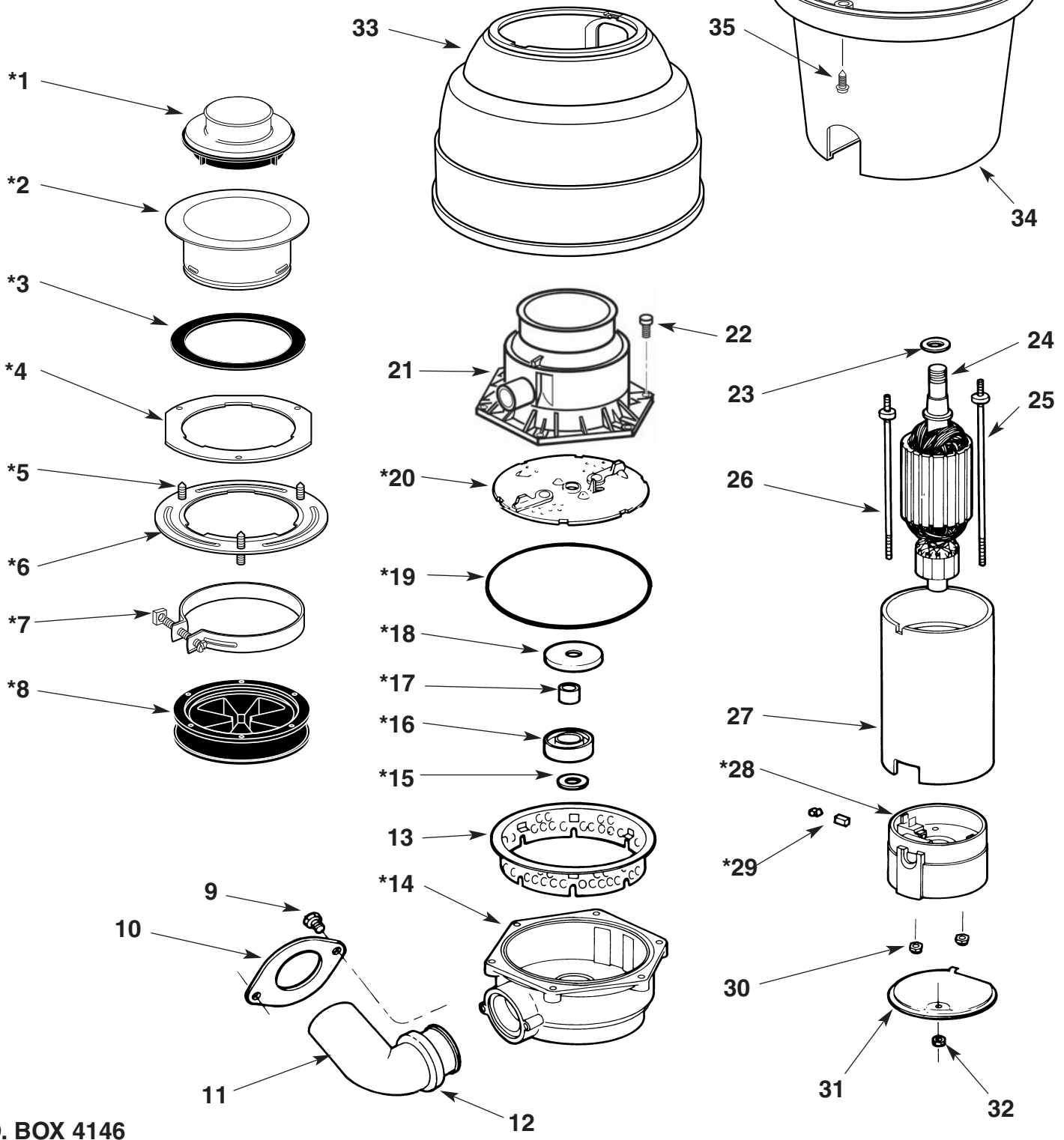
†NOT SHOWN

\*PART OF AN ASSEMBLY, BUT CAN BE PURCHASED SEPARATELY.



**Waste King**  
*Legend Series*  
by Anaheim Manufacturing Company

**PARTS LIST**  
**MODEL 9940**



P.O. BOX 4146  
ANAHEIM, CA 92803 U.S.A.

\* PART OF AN ASSEMBLY, BUT CAN BE PURCHASED SEPARATELY.

ITEM NO.	DESCRIPTION	MODEL 9950	QTY. PER UNIT
MOUNT ASSEMBLY		.249C026S07	1
*1	.STOPPER	.00-80-098	1
*2	.SINKFLANGE	.249C026PO7	1
*3	.RUBBER GASKET.	.269C031P01	1
*4	.PROTECTOR RING	.01-11-752	1
*5	.SCREW (IN A BAG)	.01-16-641	3
*6	.MOUNT RING	.01-11-696	1
*7	.HUSH CUSHION CLAMP	.142C009PO1	1
*8	.HUSH CUSHION	.614C077P01	1
9	.OUTLET SCREW	.636C017P03	2
10	.OUTLET FLANGE	.249C009P01	1
11	.OUTLET ELBOW	.673C015P01	1
12	.RUBBER OUTLET GASKET	.269C038P01	1
13	.GRIND RING	.614C060P01	1
DRAIN HOUSING ASSEMBLY		.311C082S01	1
*14	.DRAIN HOUSING	.311C082P01	1
*15	.THRUST WASHER	.789C041P01	1
*16	.WATER SEAL	.645C006P01	1
*17	.SPACER SEAL	.102C005P01	1
TURNTABLE ASSEMBLY		.258C032S04	1
*18	.SLINGER	.789C034P03	1
*19	.O-RING	.645C005P01	1
*20	.TURNTABLE.	.258C032P02	1
21	.HOPPER ASSEMBLY	.311C092S01	1
22	.HOPPER SCREW	.636C023P01	6
23	.WASHER	.789C035P02	1
24	.ARMATURE ASSEMBLY.	.626C035P05	1
25	.MOTOR STUD	.687C003P02	1
26	.MOTOR STUD	.687C003P03	1
27	.MOTOR SHELL ASSEMBLY.	.681C031S14	1
ENDBELL ASSEMBLY		.311C081S04	1
*28	.ENDBELL	.311C081S53	1
*29	.MOTOR BRUSH & BRUSH SPRING ASSEMBLY	.027C029S02	2
30	.NUT	.479C019P01	2
31	.INSPECTION PLATE	.554C032P01	1
32	.NUT	.479C021P01	1
33	.UPPER SHELL	.806C064P05	1
34	.LOWER SHELL	.806C065P05	1
35	.SHELL SCREW	.636C014P19	3
†36	.SINKFLANGE GASKET-WAXED (THICK)	.269C032P01	1

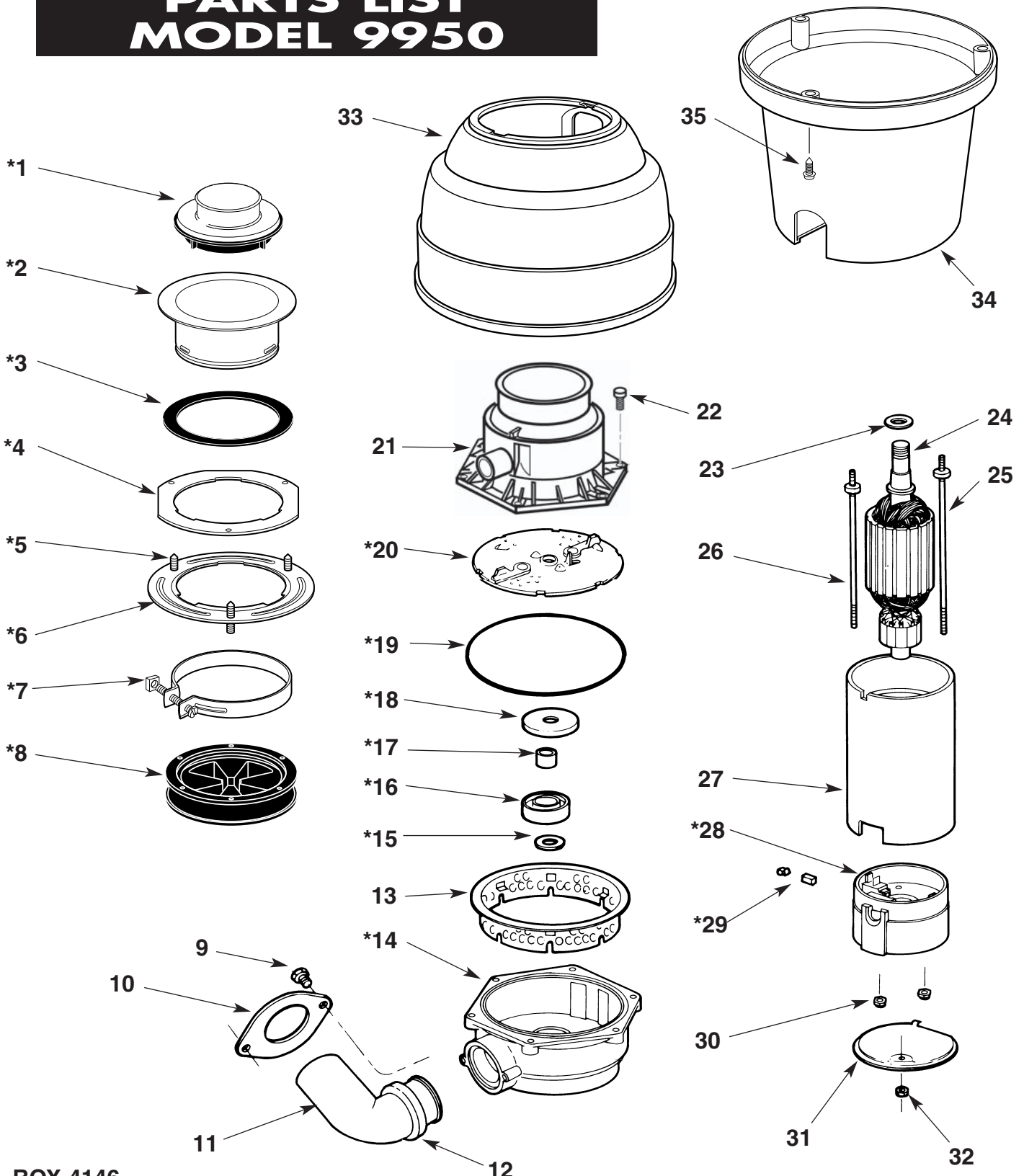
†NOT SHOWN

\*PART OF AN ASSEMBLY, BUT CAN BE PURCHASED SEPARATELY.



**Waste King**  
*Legend Series*  
 by Anaheim Manufacturing Company

**PARTS LIST**  
**MODEL 9950**



P.O. BOX 4146  
 ANAHEIM, CA 92803 U.S.A.

\* PART OF AN ASSEMBLY, BUT CAN BE PURCHASED SEPARATELY.

## MODEL 9900TC

ITEM #	DESCRIPTION	PART #	QTY	ITEM #	DESCRIPTION	PART #	QTY
	MOUNT ASSEMBLY	.249C026S07BF	...1	34	NUT	.479C021P01	...1
*1	STOPPER ASSY	.174C072S01	...1	35	UPPER SHELL	.806C064P55	...1
*2	SINKFLANGE	.249C026PO7	...1	36	LOWER SHELL	.806C065P05	...1
*3	RUBBER GASKET	.269C031P01	...1	37	SHELL SCREW	.636C014P19	...3
*4	PROTECTOR RING	.01-11-752	...1	38	PLUNGER BUTTON	.106C004P01	...1
*5	MOUNT RING	.01-11-696	...1	39	"O" RING	.614C027P01	...2
*6	SCREW (IN A BAG)	.01-16-641	...3	40	BUSHING	.102C003P02	...1
*7	HUSH CUSHION CLAMP	.142C009PO1	...1	41	"O" RING	.614C028P01	...1
8	HUSH CUSHION MOUNT	.614C077P02	...1	42	SCREW	.636C026P01	...4
9	OUTLET SCREW	.636C017P03	...2	43	COLLAR	.154C008P02	...2
10	OUTLET FLANGE	.249C009P01	...1	44	SWITCH COVER	.174C021P01	...1
11	OUTLET ELBOW	.673C015P01	...1	45	SCREW	.636C014P03	...3
12	RUBBER OUTLET GASKET	.269C038P01	...1	46	SCREW	.636C019P01	...2
13	GRIND RING	.614C060P01	...1	47	CHERRY SWITCH	.695C003P02	...1
	DRAIN HOUSING ASSEMBLY	.311C082S01	...1	48	SWITCH BRACKET	.072C001P01	...1
*14	DRAIN HOUSING	.311C082P01	...1	49	JAM NUT	.479C010P01	...1
*15	THRUST WASHER	.789C041P01	...1	50	SPRING	.675C001P01	...1
*16	WATER SEAL	.645C006P01	...1	51	WASHER	.789C011P01	...1
*17	SPACER SEAL	.102C005P01	...1	52	WASHER	.789C013P01	...1
	TURNTABLE ASSEMBLY	.258C032SO4	...1	53	RETAINER	.612C007P01	...2
*18	SLINGER	.789C034P03	...1	54	BUSHING	.287C002P01	...1
*19	O-RING	.645C005P01	...1	55	BUSHING	.102C004P01	...2
*20	TURNTABLE	.258C032P02	...1	56	CONNECTOR FLAG	.711C010P01	...2
21	HOPPER ASSEMBLY	.311C070S01	...1	57	CONDUIT CLAMP	.142C001P01	...1
22	HOPPER SCREW	.636C023P01	...6	58	GROUND WIRE	.299C005SO8	...1
23	ADAPTER	.614C061P02	...1	59	CONDUIT	.163C003P01	...1
24	GASKET	.269C014P01	...1	60	LEAD WIRE (WHITE)	.299C008P05	...1
25	WASHER	.789C035P02	...1	61	LEAD WIRE (WHITE)	.299C008P11	...1
26	ARMATURE ASSEMBLY	.626C035P05	...1	62	SPLICE	.711C009P01	...1
27	MOTOR STUD	.687C003P03	...1	63	GROUND SCREW	.636C015PO8	...1
28	MOTOR STUD	.687C003P02	...1	64	CONDUIT CLAMP	.142C002P01	...1
29	MOTOR SHELL ASSEMBLY	.681C031S14	...1	65	SCREW	.636C014P18	...1
	ENDBELL ASSEMBLY	.311C081S81	...1	†66	SINKFLANGE GASKET (THICK)	.269C032P01	...1
*30	ENDBELL	.311C081S53	...1				
*31	MTR. BRUSH & BRUSH SPRING ASSY	.027C029S02	...1				
32	NUT	.479C019P01	...2				
33	INSPECTION PLATE	.554C032P01	...1				

†NOT SHOWN

\*PART OF AN ASSEMBLY, BUT CAN BE PURCHASED SEPARATELY.

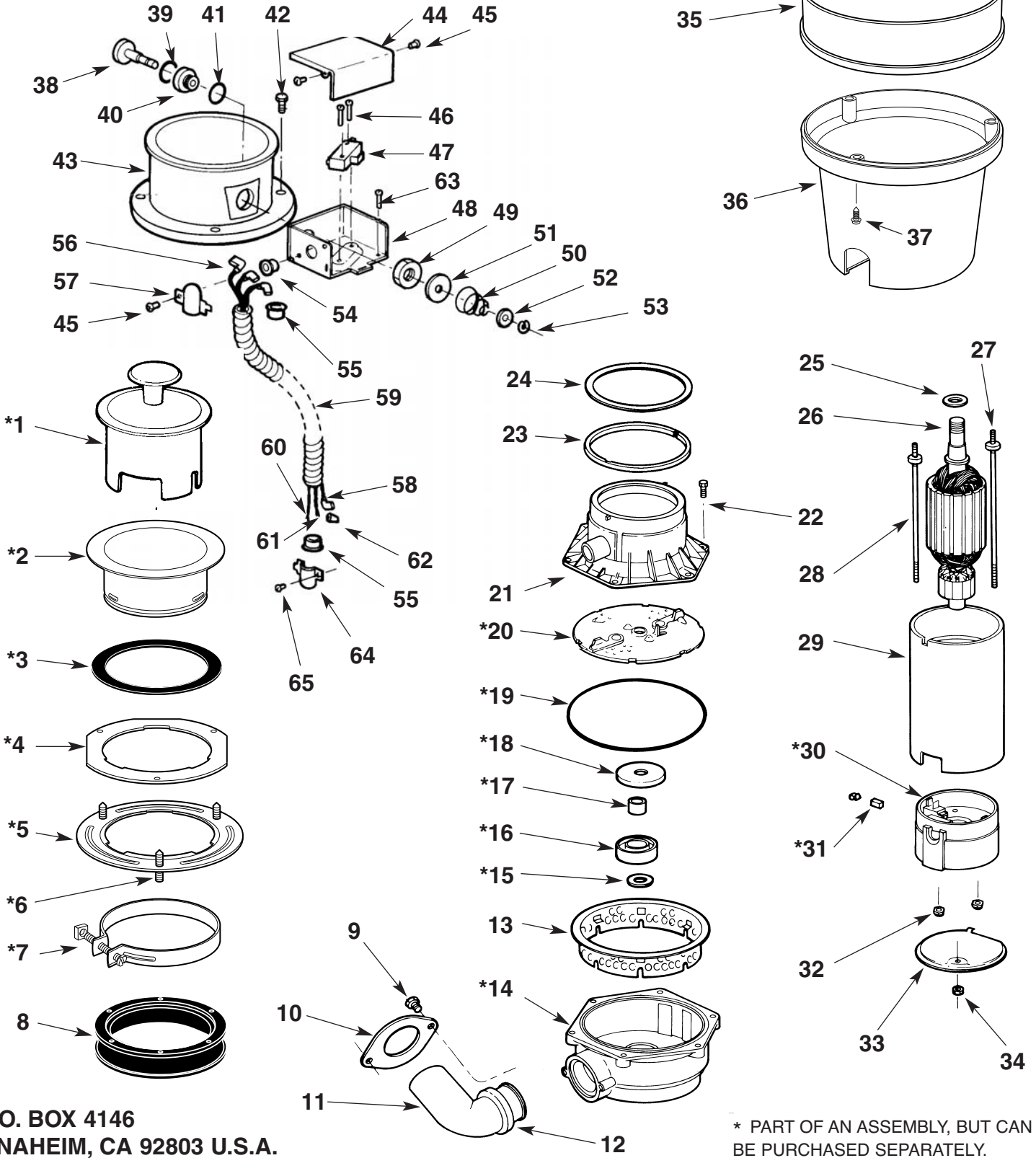


# Waste King

## Legend Series

by Anaheim Manufacturing Company

### PARTS LIST MODEL 9900TC



P.O. BOX 4146  
ANAHEIM, CA 92803 U.S.A.

\* PART OF AN ASSEMBLY, BUT CAN BE PURCHASED SEPARATELY.

ITEM NO.	DESCRIPTION	MODEL 9980	QTY. PER UNIT
MOUNT ASSEMBLY		249C026S07	1
*1	.STOPPER	00-80-098	1
*2	.SINKFLANGE	249C026P07	1
*3	.RUBBER GASKET.	269C031P01	1
*4	.PROTECTOR RING	01-11-752	1
*5	.SCREW (IN A BAG)	01-16-641	3
**6	.MOUNT RING	01-11-696	1
*7	.HUSH CUSHION CLAMP	142C009P01	1
*8	.HUSH CUSHION	614C077P01	1
9	.OUTLET SCREW	636C017P03	2
10	.OUTLET FLANGE	249C009P01	1
11	.OUTLET ELBOW	673C015P01	1
12	.RUBBER OUTLET GASKET	269C038P01	1
13	.GRIND RING	614C060P01	1
DRAIN HOUSING ASSEMBLY		311C082S01	1
*14	.DRAIN HOUSING	311C082P01	1
*15	.THRUST WASHER	789C041P01	1
*16	.WATER SEAL	645C006P01	1
*17	.SPACER	102C005P01	1
TURNTABLE ASSEMBLY		258C032S04	1
*18	.SLINGER	789C034P03	1
*19	.O-RING	645C005P01	1
*20	.TURNTABLE	258C032P02	1
21	.HOPPER ASSEMBLY	311C092S01	1
22	.HOPPER SCREW	636C023P01	6
23	.WASHER	789C035P02	1
24	.ARMATURE ASSEMBLY	626C035P16	1
25	.MOTOR STUD	687C003P05	1
26	.MOTOR STUD	687C003P06	1
27	.MOTOR SHELL ASSEMBLY	681C031S15	1
ENDBELL ASSEMBLY		311C081S10	1
*28	.ENDBELL	311C081S53	1
*29	.MOTOR BRUSH & BRUSH SPRING ASSEMBLY	027C029S02	2
30	.NUT	479C019P01	2
31	.INSPECTION PLATE	554C032P01	1
32	.NUT	479C021P01	1
33	.UPPER SHELL	806C064P05	1
34	.LOWER SHELL	806C066P05	1
35	.SHELL SCREW	636C014P19	3
†36	.SINK FLANGE GASKET-WAXED (THICK)	269C032P01	1

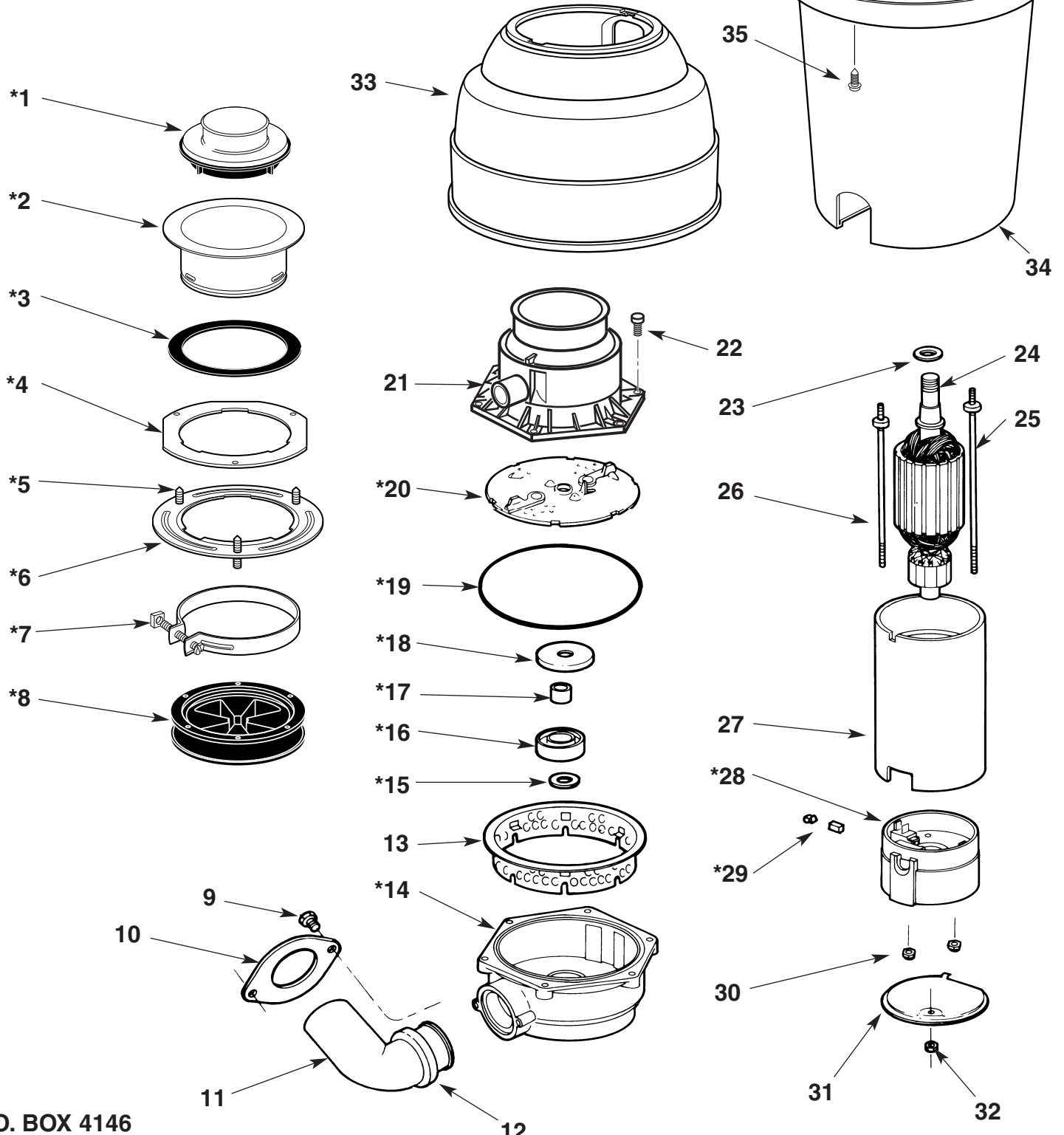
†NOT SHOWN

\*PART OF AN ASSEMBLY, BUT CAN BE PURCHASED SEPARATELY.



**Waste King**  
*Legend Series*  
by Anaheim Manufacturing Company

**PARTS LIST  
MODEL 9980**



P.O. BOX 4146  
ANAHEIM, CA 92803 U.S.A.

\* PART OF AN ASSEMBLY, BUT CAN BE PURCHASED SEPARATELY.

# MODEL 9980TC

ITEM #	DESCRIPTION	PART #	QTY	ITEM #	DESCRIPTION	PART #	QTY
	MOUNT ASSEMBLY	.249C026S07BF	...1	34	...NUT	.479C021P01	...1
*1	...STOPPER ASSY	.174C072S01	...1	35	...UPPER SHELL	.806C064P51	...1
*2	...SINKFLANGE	.249C026PO7	...1	36	...LOWER SHELL	.806C066P01	...1
*3	...RUBBER GASKET	.269C031P01	...1	37	...SHELL SCREW	.636C014P19	...3
*4	...PROTECTOR RING	.01-11-752	...1	38	...PLUNGER BUTTON	.106C004P01	...1
*5	...MOUNT RING	.01-11-696	...1	39	...O" RING	.614C027P01	...2
*6	...SCREW (IN A BAG)	.01-16-641	...3	40	...BUSHING	.102C003P02	...1
*7	...HUSH CUSHION CLAMP	.142C009PO1	...1	41	...O" RING	.614C028P01	...1
8	...HUSH CUSHION MOUNT	.614C077P02	...1	42	...SCREW	.636C026P01	...4
9	...OUTLET SCREW	.636C017P03	...2	43	...COLLAR	.154C008P02	...1
10	...OUTLET FLANGE	.249C009P01	...1	44	...SWITCH COVER	.174C021P01	...1
11	...OUTLET ELBOW	.673C015P01	...1	45	...SCREW	.636C014P03	...3
12	...RUBBER OUTLET GASKET	.269C038P01	...1	46	...SCREW	.636C019P01	...2
13	...GRIND RING	.614C060P01	...1	47	...CHERRY SWITCH	.695C003P02	...1
	DRAIN HOUSING ASSEMBLY	.311C082S01	...1	48	...SWITCH BRACKET	.072C001P01	...1
*14	...DRAIN HOUSING	.311C082P01	...1	49	...JAM NUT	.479C010P01	...1
*15	...THRUST WASHER	.789C041P01	...1	50	...SPRING	.675C001P01	...1
*16	...WATER SEAL	.645C006P01	...1	51	...WASHER	.789C011P01	...1
*17	...SPACER SEAL	.102C005P01	...1	52	...WASHER	.789C013P01	...1
	TURNTABLE ASSEMBLY	.258C032S04	...1	53	...RETAINER	.612C007P01	...2
*18	...SLINGER	.789C034PO3	...1	54	...BUSHING	.287C002P01	...1
*19	...O-RING	.645C005P01	...1	55	...BUSHING	.102C004P01	...2
*20	...TURNTABLE	.258C032P02	...1	56	...CONNECTOR FLAG	.711C010P01	...2
21	...HOPPER ASSEMBLY	.311C092S01	...1	57	...CONDUIT CLAMP	.142C001P01	...1
22	...HOPPER SCREW	.636C023P01	...6	58	...GROUND WIRE	.299C005S08	...1
23	...ADAPTER	.614C061P02	...1	59	...CONDUIT	.163C003P01	...1
24	...GASKET	.269C014P01	...1	60	...LEAD WIRE (WHITE)	.299C008P05	...1
25	...WASHER	.789C035P02	...1	61	...LEAD WIRE (WHITE)	.299C008P11	...1
26	...ARMATURE ASSEMBLY	.626C035P16	...1	62	...SPLICE	.711C009P01	...1
27	...MOTOR STUD	.687C003P05	...1	63	...GROUND SCREW	.636C015PO8	...1
28	...MOTOR STUD	.687C003P06	...1	64	...CONDUIT CLAMP	.142C002P01	...1
29	...MOTOR SHELL ASSEMBLY	.681C031S15	...1	65	...SCREW	.636C014P18	...1
	ENDBELL ASSEMBLY	.311C081S09	...1	†66	...SINKFLANGE GASKET (THICK)	.269C032P01	...1
*30	...ENDBELL	.311C081S53	...1				
*31	...MTR. BRUSH & BRUSH SPRING ASSY	.027C029S02	...1				
32	...NUT	.479C019P01	...2				
33	...INSPECTION PLATE	.554C032P01	...1				

†NOT SHOWN

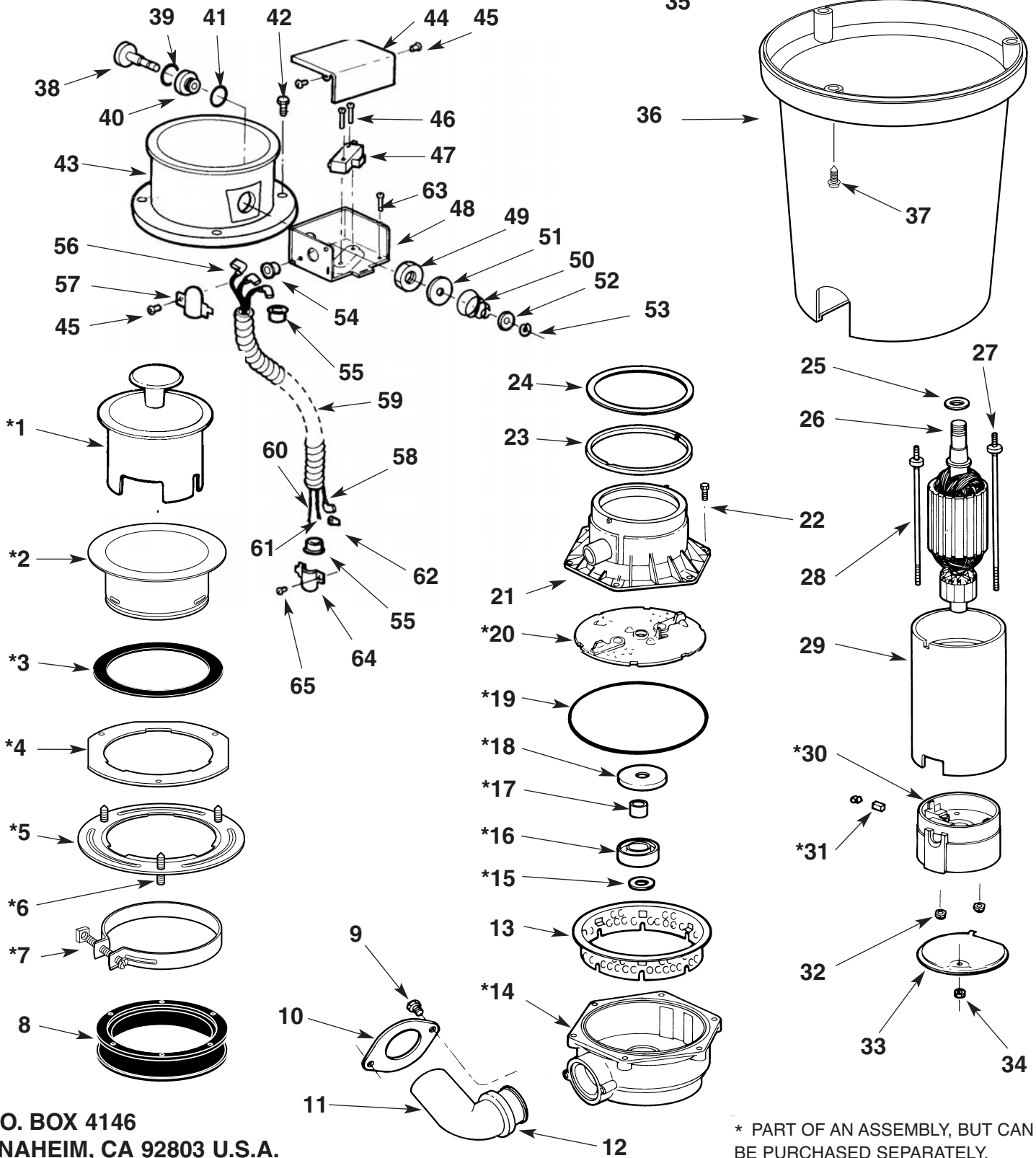
\*PART OF AN ASSEMBLY, BUT CAN BE PURCHASED SEPARATELY.



# Waste King Legend Series

by Anaheim Manufacturing Company

## PARTS LIST MODEL 9980TC



P.O. BOX 4146  
ANAHEIM, CA 92803 U.S.A.

\* PART OF AN ASSEMBLY, BUT CAN BE PURCHASED SEPARATELY.