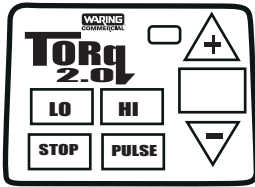


# Unit Information

2 HP – 1500 watt – 24,000 Max RPM  
 48 oz. Stackable  
 Break Resistant Container  
 Limited 2 Year Warranty

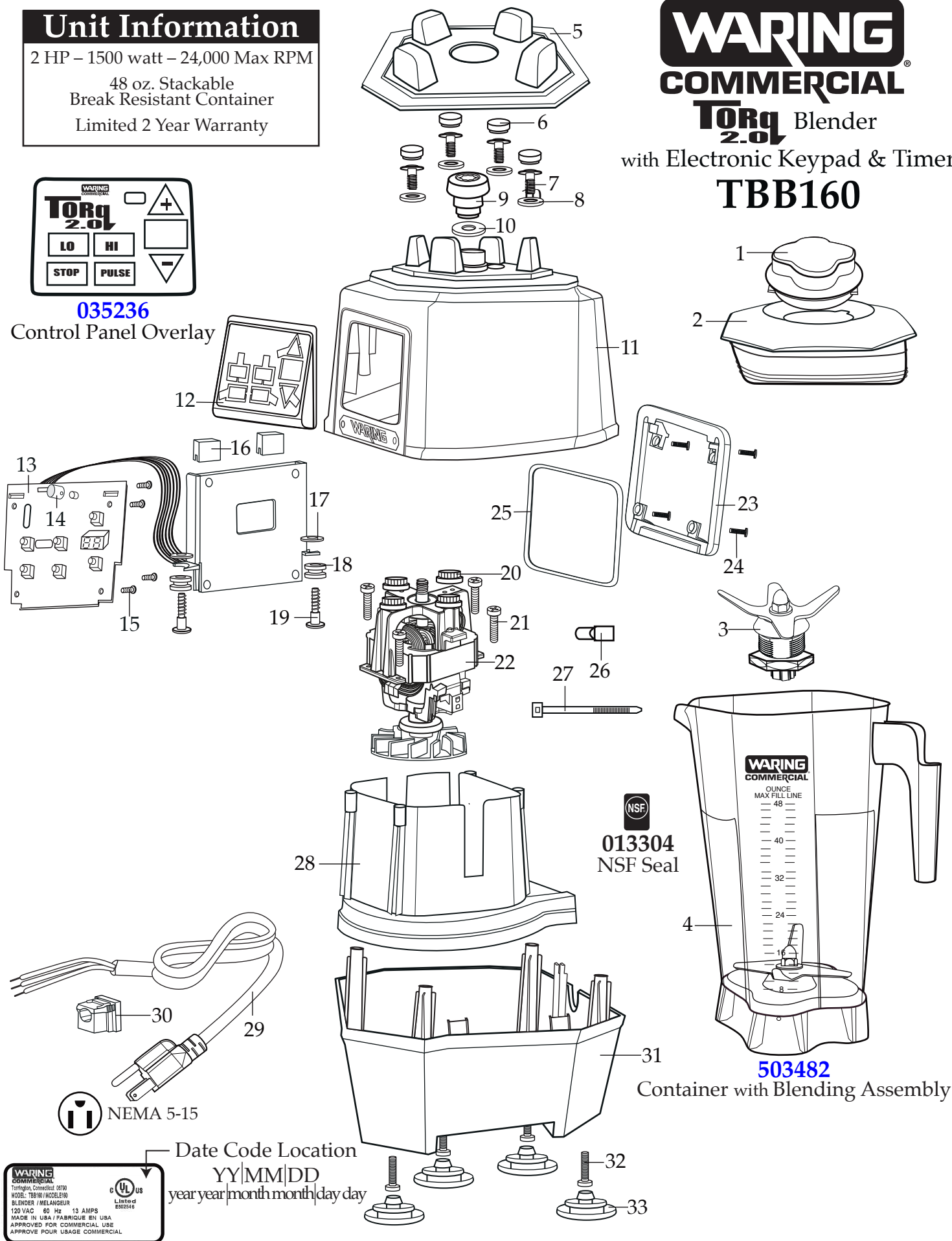
# WARING COMMERCIAL

## TORq 2.0 Blender with Electronic Keypad & Timer **TBB160**



**035236**

Control Panel Overlay



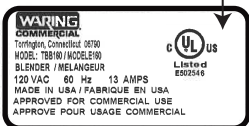
**013304**  
 NSF Seal

**503482**

Container with Blending Assembly

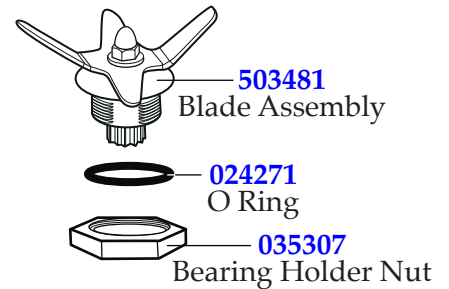
NEMA 5-15

Date Code Location  
 YY|MM|DD  
 year|year|month|month|day|day



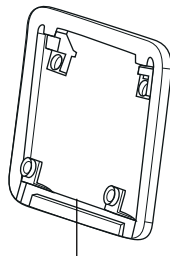
Illustration#	Part#	Description
1	028769-E	Eastman Jar Lid Cover
2	035238-V	Vinyl Jar Lid
3	035465	Blending Assembly (with O ring and bearing holder nut)
4	035239	48 oz. Stackable Container ONLY
5	035885	Jar Pad ( <i>changed after 8/2/2018</i> )
	035091	Jar Pad (use 035885)
6	035085	Hole Plug (4 required)
7	034275	Sems (4 required)
8	034273	B Gasket (4 required)
9	037034	Drive Coupling Machined 2 Gen. ( <i>on units after 9/19/2019</i> )
	035251	Drive Coupling
10	037033	Coupling Washer ( <i>on units after 9/19/2019</i> )
11	503609	Top Housing with Badge ( <i>on units after 9/28/2022</i> )
	503460-160	Top Housing Assembly
12	035234	Control Housing Front Bezel ( <i>on units after 9/28/2022</i> )
13	037012	Control Panel ( <i>on units after 1/25/2022</i> )
	035162	TBB160 Control Panel Assembly
14	035253	LED Lens
15	035090	Screw (4 required)
16	034900	PCB Cushion (2 required)
17	013604	Washer (2 required)
18	034904	Rubber Pad (2 required)
19	034902	Sems (2 required)
20	034272	A Gasket (4 required)
21	034274	Screw (4 required)
22	035815	Chiaphua Motor with Sensor ( <i>on units after 6/4/2021</i> )
	034276	ECM Motor / KB500
23	035237	Control Housing Back Bezel ( <i>on units after 9/28/2022</i> )
24	035090	Screw (4 required)
25	038576	Top Housing Control Seal ( <i>on units after 9/28/2022</i> )
26	012409	Small Crimp Connectors (2 required <i>on units after 11/22/2016</i> )
		(4 required)
	019123	Large Crimp Connectors (2 required <i>on units after 11/22/2016</i> )
		(1 required)
27	013731	Cable Ties (6 required <i>on units after 11/22/2016</i> ) - (2 required)

Illustration#	Part#	Description
28	503483	Motor Housing with Dampeners
29	035124 026925	Cordset (on units after 4/25/2016) Cordset
30	033619 007556	Strain Relief (on units after 4/25/2016) Strain Relief
31	503480 035079	Bottom Housing & Feet Bottom Housing ONLY
32	034274	Screw (4 required)
33	035088	Foot (4 required)



**Part No Longer Used**

(last used 9/19/2019)



035237

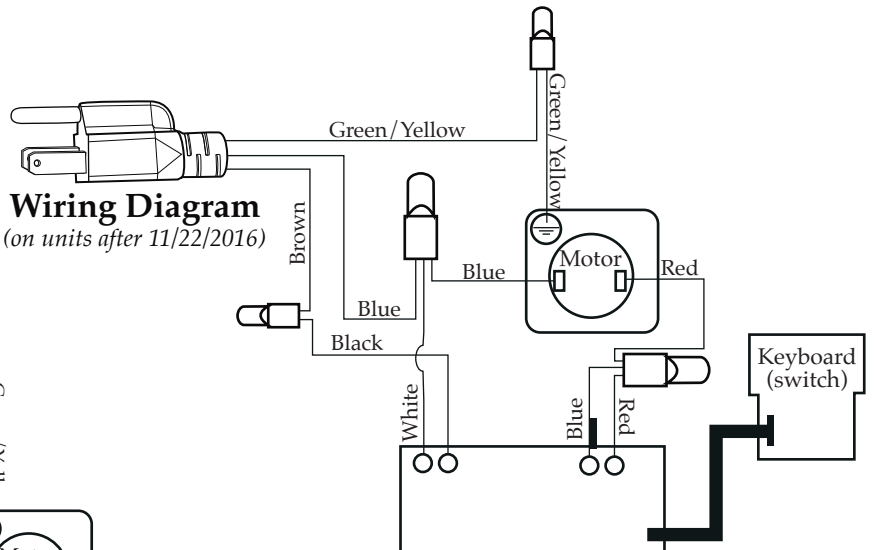
Control Housing Back Bezel

035465

Blending Assembly  
(with O ring and bearing holder nut)

**Wiring Diagram**

(on units after 11/22/2016)



**Wiring Diagram**

