

WARING COMMERCIAL

Variable Speed Blenders

MX1200XT

64 oz. Raptor container

Marked for Deletion on 2/20/2011

MX1200XTP

32-48 oz. Eastman container

Market for Deletion on 6/27/2014

MX1200XTS

64 oz. stainless steel container

Unit Information

Limited 3 Year Motor Warranty
Two Year Parts & Labor

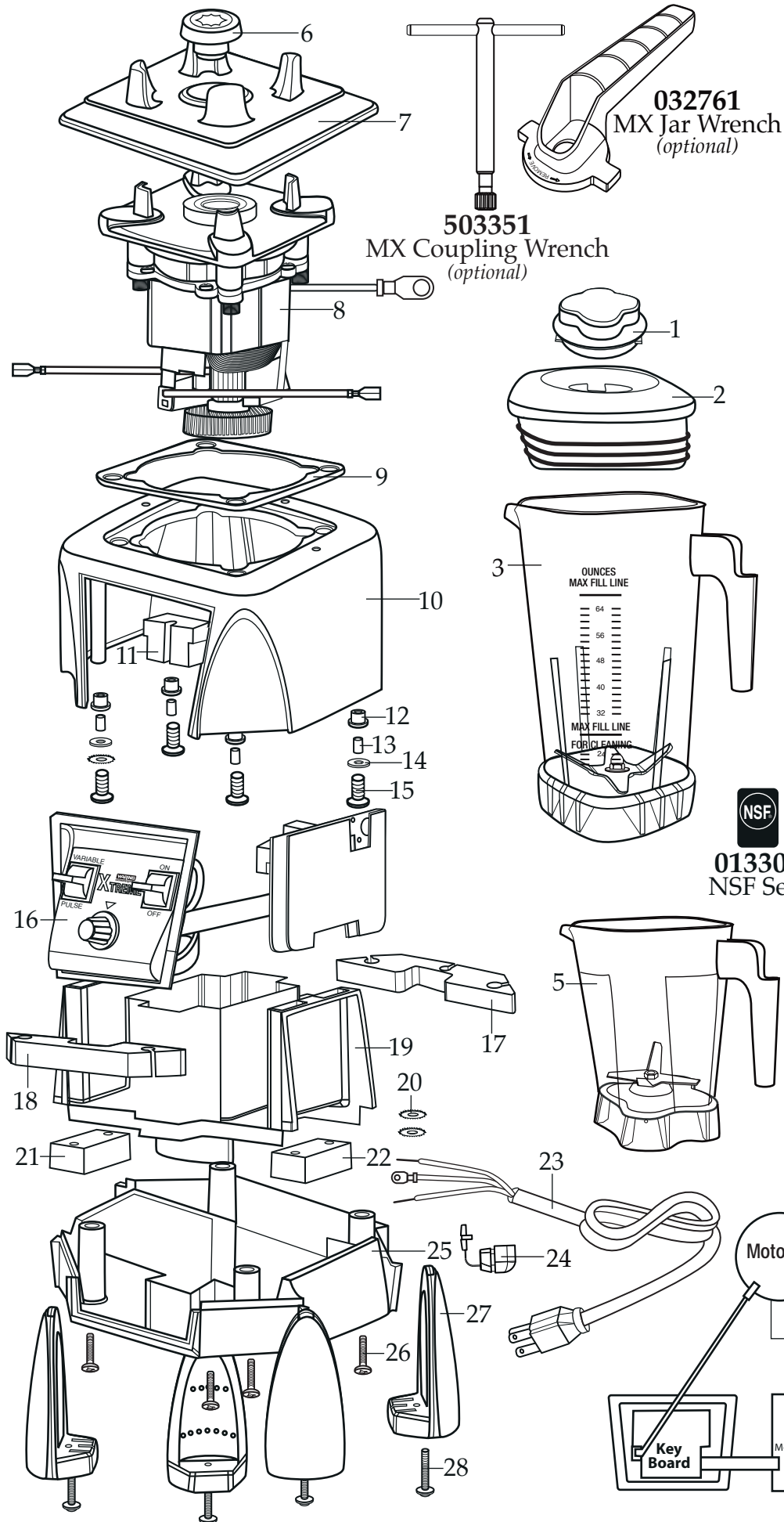
60Hz - 13 Amps

Height 19" - Weight 15 lbs.

3 HP Motor

RPM's Variable 1,500-20,000
Pulse 30,000

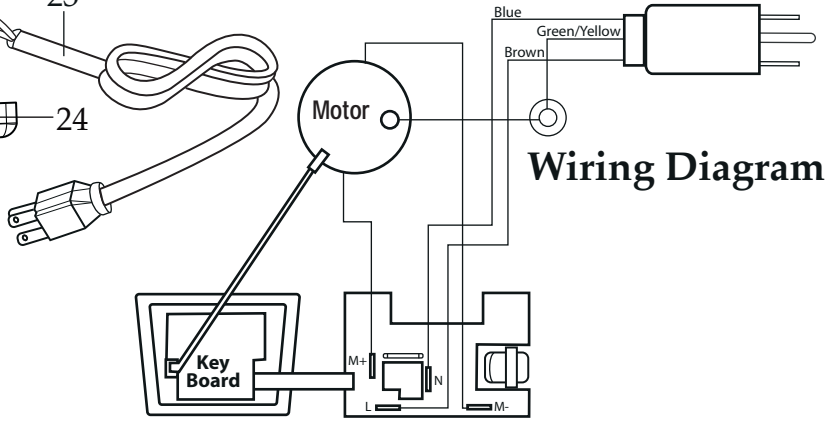
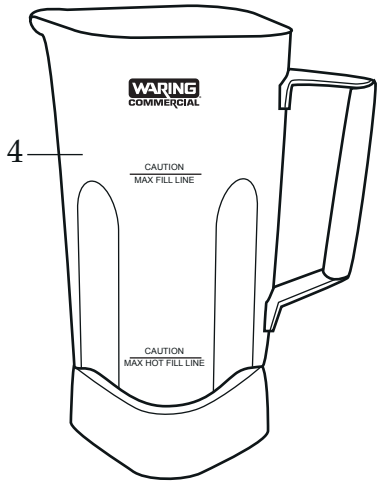
One Piece Dishwasher Safe
Removable Jar Pad



503351
MX Coupling Wrench
(optional)

032761
MX Jar Wrench
(optional)

013304
NSF Seal



Wiring Diagram

Catalog	Model
MX1200XT	MX1200XT11
MX1200XTP	MX1200XT21
MX1200XTS	MX1200XT31



Illustration#	Part#	Description
1	026425-E	Eastman Jar Lid Cover
2	026424-V	Vinyl Jar Lid <i>(changed 12/13/2012)</i>
3	503398	64 oz. Stackable Raptor Container with Blending Assembly <i>(changed 3/1/2011)</i>
4	503346 503372	64 oz. Stainless Steel Container with Blending Assembly <i>(on units after 3/1/2011)</i> 64 oz. Stainless Steel Container with Blending Assembly
5	503348	48 oz. Eastman Container with Blending Assembly <i>(changed 3/1/2011)</i>
6	028538	Drive Clutch
7	026442	Jar Pad
8	028101	Motor
9	026437	Dampening Plate Gasket
10	028032-09	Black Top Housing
11	028541	Motor Foam (2 required)
12	026439	Dampening Plate Bushing (4 required)
13	026453	Dampening Plate Sleeve (4 required)
14	026459	Washer (2 required)
15	028929 026459 026455	Screw (4 required) Washer (4 required <i>on units before 9/6/2007</i>) Screw (4 required <i>on units before 9/6/2007</i>)
16	035013	Microprocessor Control Panel <i>(changed 5/18/2015)</i>
17	028248	Housing Foam Rear Baffle
18	028249	Housing Foam Front Baffle
19	028240	Motor Housing <i>(changed 12/1/2006)</i>
20	002943	Washer (3 required)
21	028247	Bottom Housing Foam Baffle
22	028542	Foam Baffle
23	026925	Cord Set
24	007556	Strain Relief
25	028241-09-X	Black Bottom Housing
26	012505	Screw (4 required)
27	026430	Corner Post (4 required)
28	028928 026459 012505	Screw (4 required) Washer (4 required <i>on units before 9/6/2007</i>) Screw (4 required <i>on units before 9/6/2007</i>)

Catalog	Model
MX1200XT	MX1200XT11
MX1200XTP	MX1200XT21
MX1200XTS	MX1200XT31

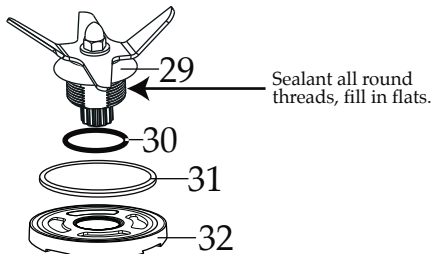
Waring Factory Service Center
 314 Ella T. Grasso Ave.
 Torrington, CT 06790
 Tele. 1-800-269-6640
 Fax 860-496-9017
 www.waringcommercialproducts.com

Illustration#	Part#	Description
29	503397 503345	Raptor Container ONLY Blade Assembly (changed 3/1/2011) Blade Assembly
30	024271	O Ring
31	024268	Nut Gasket
32	029631	Bearing Holder Nut
33	503326	64 oz. Stackable Raptor Container ONLY (changed 3/1/2011)
34	503308	32-48 oz. Eastman Container ONLY
35	026798	Support Washer
36	026648	64 oz. Stainless Steel Container
37	026649	Container Support
38	026797	Bearing Holder Gasket
39	026796	Bearing Holder Washer
40	026795	Stainless Steel Jar Bearing Holder Nut

Notes for 503398 & 503348 :

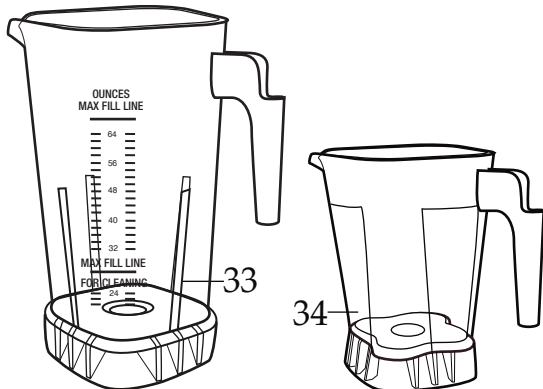
Torque 100-125 in/lbs

Sealant all around the threads, fill in flats.
Dow Corning Sealant RTV 733



030889 (503398)
Blending Assembly Kit

031060 (503348)
Blending Assembly Kit

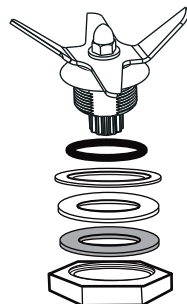


Notes for 503346 & 503372:

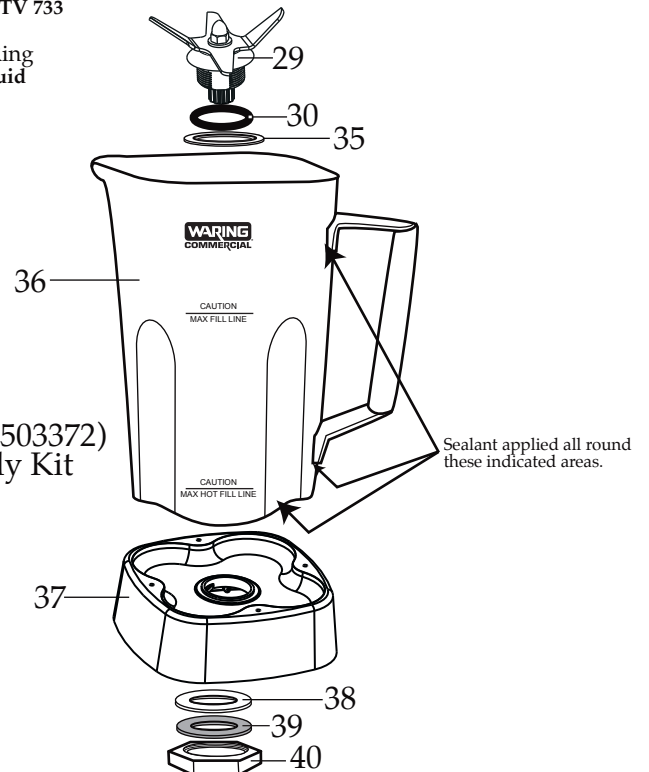
Torque 100-125 in/lbs

Sealant applied all around indicated areas.
Dow Corning Sealant RTV 733

Lubricant applied to O Ring
Dow Corning 200 (R) Fluid



032483 (503346 & 503372)
Blending Assembly Kit



503346 - 64 oz. Stainless Steel Container
(on units after 3/1/2011)