

Unit Information

1/2 HP

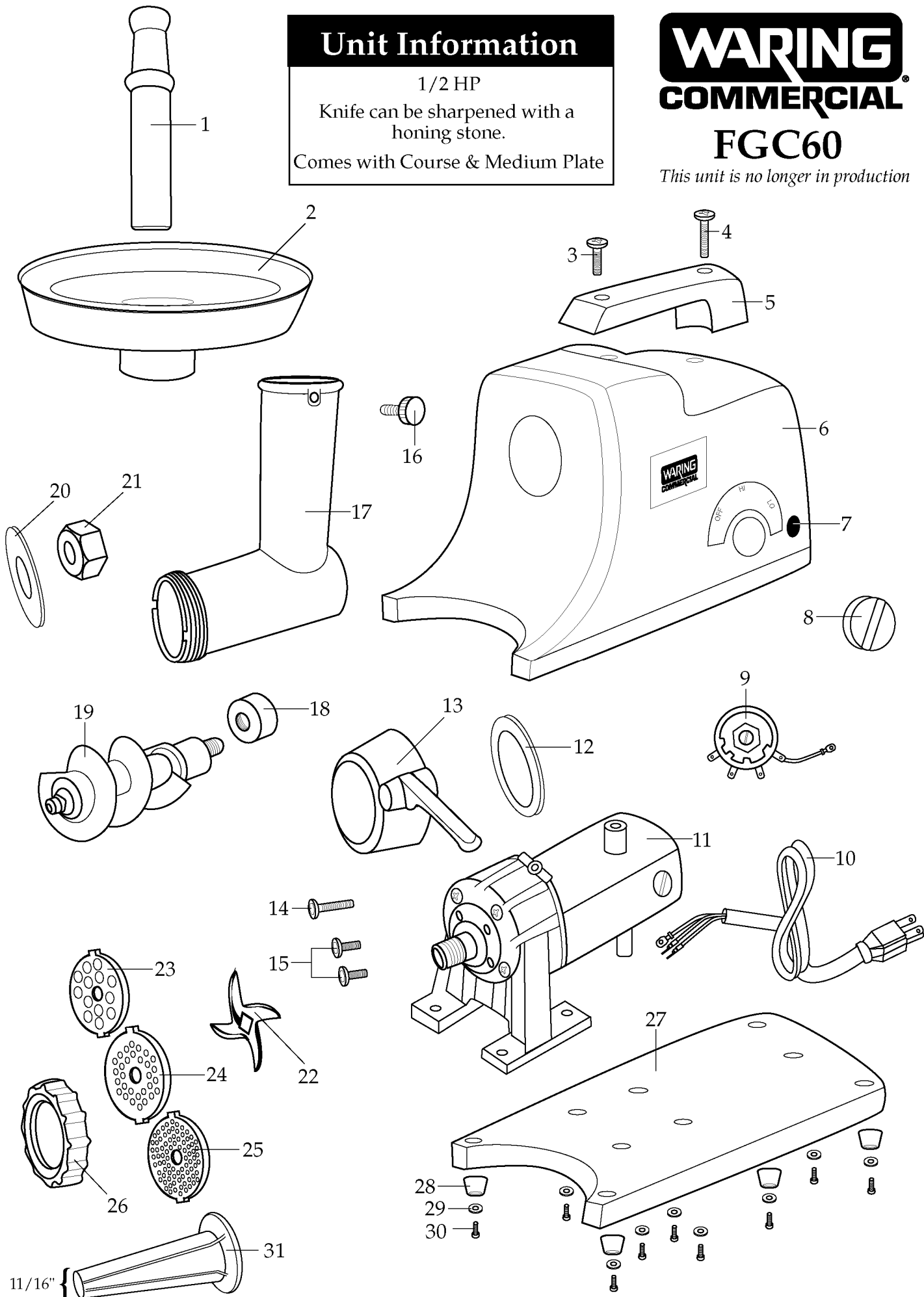
Knife can be sharpened with a honing stone.

Comes with Course & Medium Plate

WARING COMMERCIAL®

FGC60

This unit is no longer in production



Illustration#	Part#	Description
1	014290	Pusher
2	014350	Hopper (food opening is 2 ^{1/2} " diameter)
3	018034	Screw /short
4	019676	Screw /long
5	015363	Handle
6	014531	Top Housing
7	017816	Reset Switch
8	014292	Switch Knob
9	017116	Switch / Off, Hi, Lo
10	017118	Cord Set
11	017138	Motor
12	016952	Grinding Head Seal
13	014351	Collar Handle Assy.
14	019399	Allen Head Screw /long
15	018039	Allen Head Screw /short 2 Req.'d
16	017486	Thumb Screw
17	014974	Grinding Head
18	017144	Worm Feed Coupling
19	014293	Worm Feed
20	017119	Gasket
21	014352	Nut /right handed thread
22	014294	Knife
23	014349	Coarse Plate 5/16"
24	014288	Medium Plate 3/16"
25	014289	Fine Plate 1/8"
26	014291	End Cap
27	018035	Bottom Housing
28	018037	Washer 9 Req.'d
29	018036	Foot 4 Req.'d
30	018038	Screw 9 Req.'d
31	014443	Sausage Stuffer

Items Not Shown

015003 - Fiber Gear Assy. (gear, gear shaft and "C" clip)

017484 - Brush and Spring 2 Req.'d

017117 - Relay