

Unit Information

1.8 Amps.
12,500 RPM's (no load)
Direct Drive Motor

WARING COMMERCIAL

DMC105 / Super Mixer II



026778
Name Plate

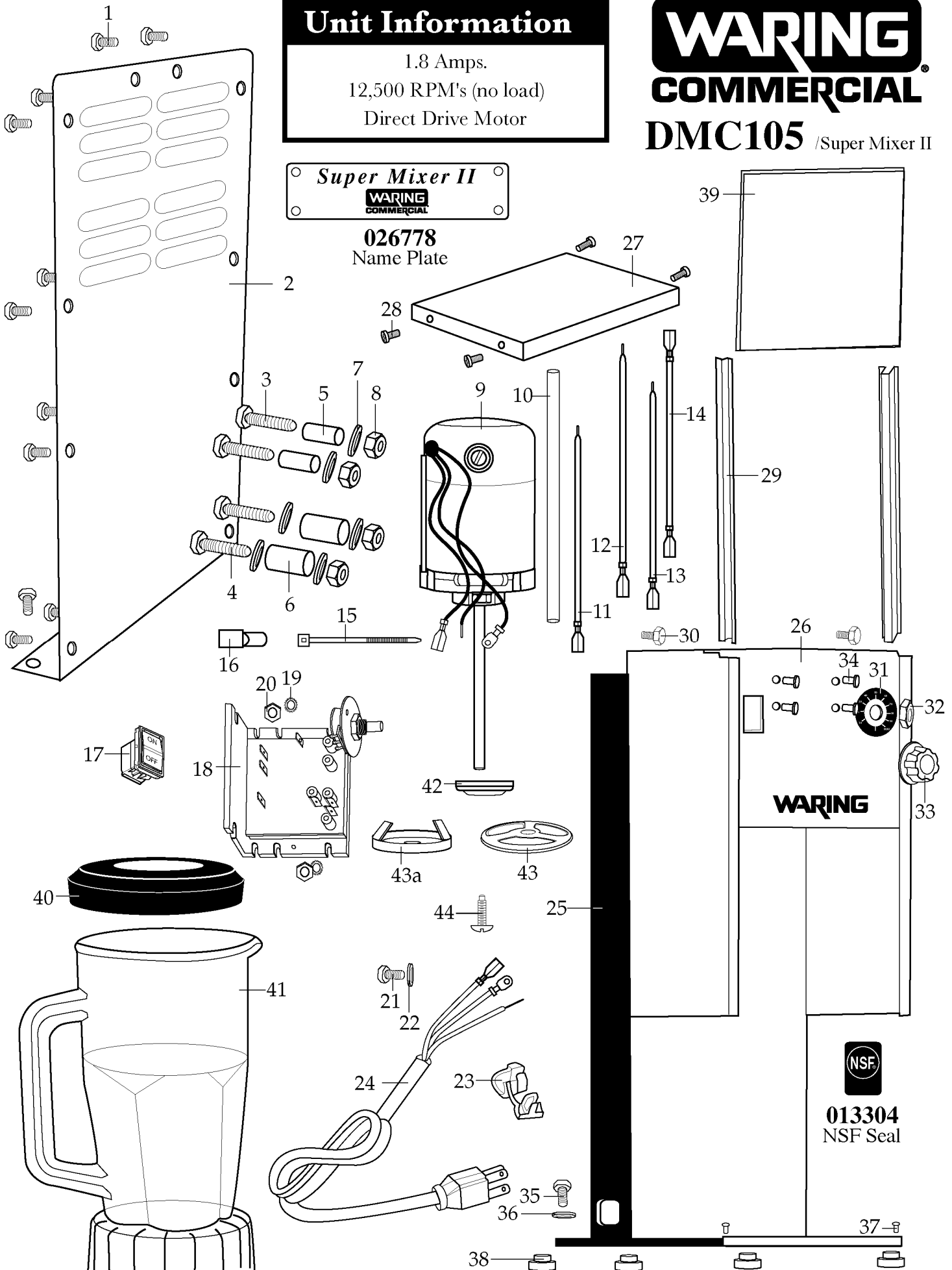


Illustration #	Part #	Description
1	016562	Screw - hex head 13 Req.'d
2	016304	Rear Panel
3	016294	Screw - hex head 2 Req.'d
4	014466	Screw - hex head 2 Req.'d
5	016293	Upper Motor Mount 2 Req.'d
6	016159	Lower Motor Mount 2 Req.'d
7	003344	Washer 6 Req.'d
8	016189	Nut 4 Req.'d
9	027979	Motor
10	012863	Insulation Sleeve
11	502905	Lead Assy. /brown
12	502220	Lead Assy. /black 3 Req.'d
13	503037	Lead Assy. /blue
14	503038	Lead Assy. /brown 12"
15	013731	Cable Tie
16	012409	Crimp Connector 2 Req.'d
17	026806	Rocker Switch
18	027980	Control Board
19	002943	Washer 2 Req.'d /control board
20	002944	Hex Nut 2 Req.'d /control board
21	027278	Screw /ground
22	002943	Washer /ground
23	007556	Strain Relief
24	003565	Cord Set
25	017123	Frame /coated
26	502904	Housing
27	016166	Cover
28	016239	Screw 4 Req.'d

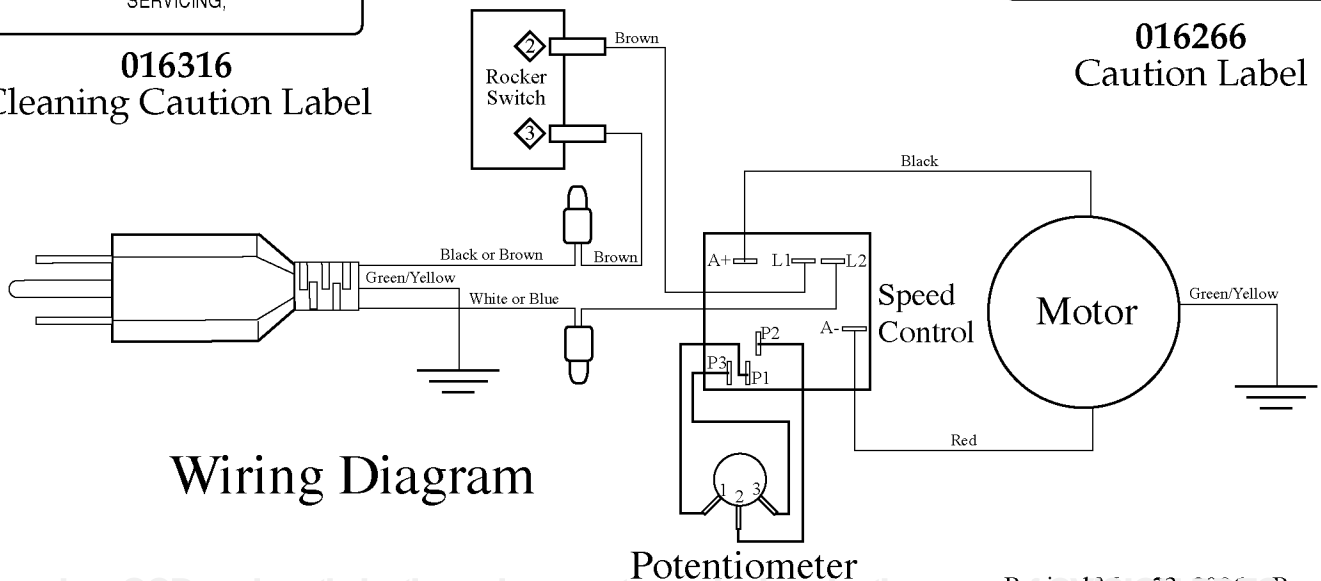
Illustration #	Part #	Description
29	016167	Guide 2 Req.'d
30	016562	Screw - hex head 2 Req.'d
31	028031	Speed Control Label
32	028041	Panel Nut
33	019270	Potentiometer Knob
34	016153	Rivet 4 Req.'d /name plate
35	027278	Screw /ground
36	002943	Washer /ground
37	014980	Stud 2 Req.'d
38	016411	Foot 4 Req.'d
39	026781	Door
40	013442	Outer Lid
41	018436	Container
42	026736	Collar
43	028274	Agitator (<i>current production</i>)
43a	017492	Agitator (<i>older units</i>)
44	016164	Screw

CAUTION!
UNIT ENERGIZED. DISCONNECT FROM
POWER SOURCE BEFORE CLEANING OR
SERVICING.

016316
Cleaning Caution Label

READ INSTRUCTIONS BEFORE USING.
LIFT CUP UPWARD IN ONE SLOW
CONTINUOUS MOTION UNTIL AGITATOR
BOTTOMS OUT. BACK DOWN SLOWLY
UNTIL AGITATOR BEGINS TO EMERGE.

016266
Caution Label



Wiring Diagram

Potentiometer