

Unit Information

1.8 Amps.
11,000 RPM's (no load)
Direct Drive Single Speed Motor
Allow 1-2 Seconds for Motor to
Reach Full Speed

WARING

COMMERCIAL

DMC100 /Super Mixer

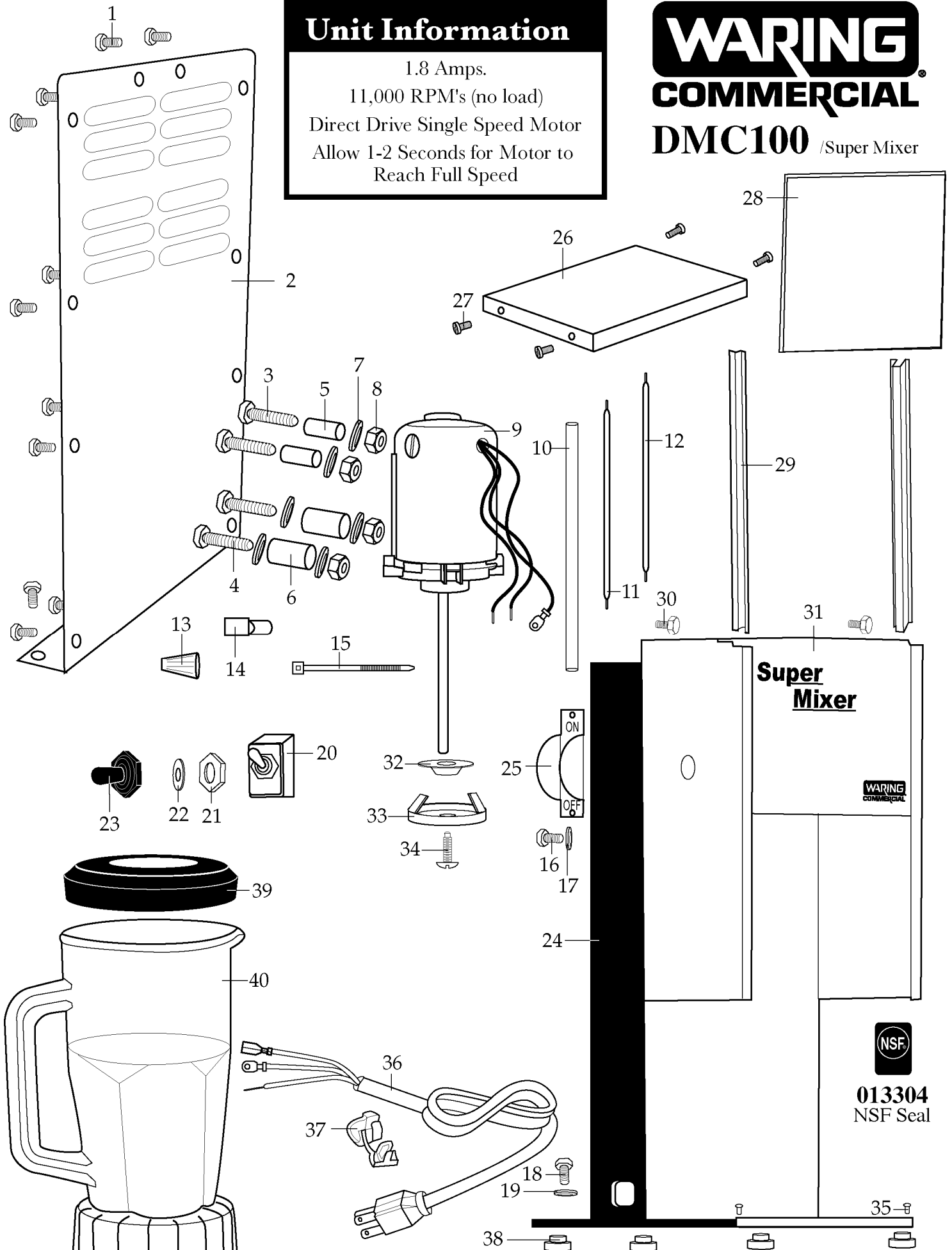


Illustration #	Part #	Description
1	016562	Screw - hex head 13 Req.'d
2	016304	Rear Panel
3	016294	Screw - hex head 2 Req.'d
4	014466	Screw - hex head 2 Req.'d
5	016293	Upper Motor Mount 2 Req.'d
6	016159	Lower Motor Mount 2 Req.'d
7	003344	Washer 6 Req.'d
8	016189	Nut 4 Req.'d
9	016314	Motor
10	012863	Insulation Sleeve
11	016302	Lead /brown
12	016158	Lead /blue
13	009051	Wire Nut 3 Req.'d
14	012409	Crimp Connector 2 Req.'d
15	013731	Cable Tie
16	016562	Screw /ground motor
17	002943	Washer /ground motor
18	016562	Screw - hex head /ground cord
19	002943	Washer /ground cord
20	003550	Switch
21	016236	Nut
22	014604	Washer
23	012703	Seal (switch boot)
24	017123	Frame /coated
25	016303	Switch Guard
26	016166	Cover
27	016239	Screw 4 Req.'d
28	019793	Door
29	016167	Guide 2 Req.'d
30	016562	Screw - hex head 2 Req.'d
31	501515	Housing

Catalog#
DMC100

Model
31DM58

WARING
COMMERCIAL[®]
Waring Factory Service Center
314 Ella T. Grasso Ave.
Torrington, CT 06790
Tele. 1-800-269-6640
Fax 860-496-9017
www.waringproducts.com

Illustration #	Part #	Description
32	016160	Collar
33	017492	Agitator
34	016164	Screw
35	014980	Stud 2 Req.'d
36	003565	Cord Set (<i>current production</i>)
	500830	Cord Set (<i>older units</i>)
37	007556	Strain Relief
38	016411	Foot 4 Req.'d
39	013442	Outer Lid
40	018436	Container

Items Not Shown

017328 - Brush /motor 2 Req.'d

CAUTION!

UNIT ENERGIZED. DISCONNECT FROM
POWER SOURCE BEFORE CLEANING OR
SERVICING,

016316

Cleaning Caution Label

READ INSTRUCTIONS BEFORE USING.
LIFT CUP UPWARD IN ONE SLOW
CONTINUOUS MOTION UNTIL AGITATOR
BOTTOMS OUT. BACK DOWN SLOWLY
UNTIL AGITATOR BEGINS TO EMERGE.

016266

Caution Label

