



Outperform every day.™

# Autofill Device Operator's Manual

## Frozen Beverage Granita Machines



---

Register your product at [Vollrath.com/registration](https://www.vollrath.com/registration) and become eligible to win a free 10" Vollrath Tribute® fry pan.

© 2018 The Vollrath Company L.L.C.

29/07/19

## 1 INTRODUCTION

This operator's manual is a complement to the standard Granita machine operator's manual available in the unit package. Carefully read first the standard unit Operator's Manual and then all the following sections of this one thoroughly to familiarize yourself with all aspects of the system.

The purpose of the Autofill Device is to increase the productivity of a Granita Machine far beyond the containers capacity, allowing the automatic refill as soon as the product in the containers drops lower a preset level.

In order to operate a Granita Machine equipped with Autofill Devices a remote fill system is required.

The remote fill system is composed of all those parts that are installed outside the dispenser and is intended to supply the dispenser with the adequate and correct beverage to be frozen. It is not the aim of this manual to instruct about how to set up and operate a remote fill system.

## 2 INSTALLATION

**1** Loosen the fitting lockers (A) located on the rear cover of each bowl equipped with Autofill Device and connect the remote fill system using a 1/4" fitting suitable to the purpose. Tighten the fitting lockers (see figure 1).

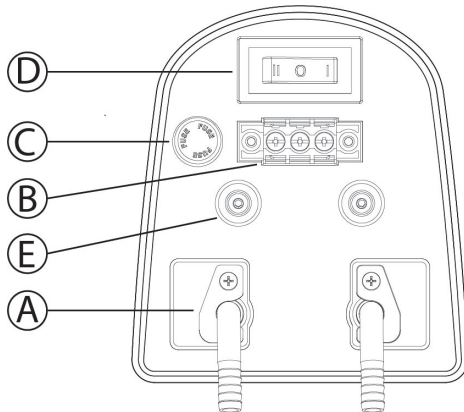


figure 1



### IMPORTANT

Whatever the remote fill system may be make sure that the inlet product pressure into the Autofill Device is not exceeding 2.5 bar (36 psi).

**2** On the rear cover of each bowl a 3-pole terminal block (B) is located. It is designed for connecting a Solenoid Valve or a

valve (see figure 2).

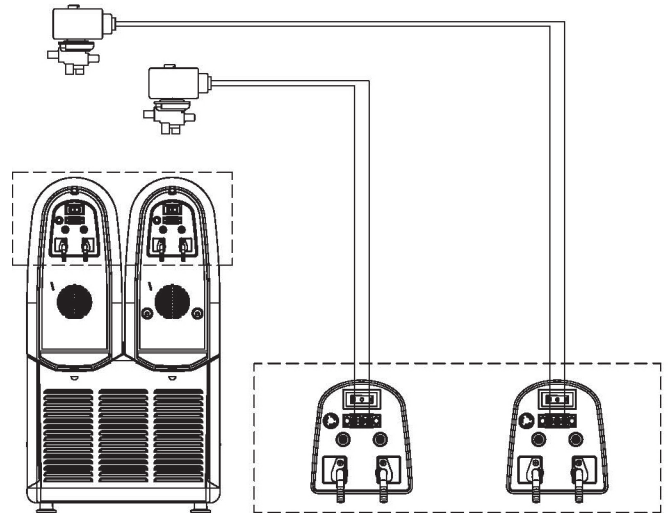


figure 2



### IMPORTANT

Solenoid Valve or pump must be 24V DC 12W maximum.

On the rear cover of each bowl it is present also a 1.25 Amps Fuse (C) to protect the Autofill Devices from short circuits or overloads.

**3** The Autofill Device doesn't come presanitized from the factory. Prior to starting operation an In-Place Sanitization is to be performed according with this handbook instructions (paragraph 3.3 IN-PLACE SANITIZATION).

## 3 OPERATING PROCEDURES

Once the remote fill system is set up, follow the procedures described in chapter 3.1 DESCRIPTION OF CONTROLS to activate the Autofill system.



### IMPORTANT

The device is designed so as no refilling occurs in case the top cover of the bowl is not properly fitted.

If the top cover is properly installed, the remote fill system starts to operate and feed the bowl through the nozles in the rear wall. As soon as the product level reaches the sensor located on the rear wall of the bowl, the priming automatically stops.

As soon as the sensor immersed in the product gets uncovered (because of dispensed product), the solenoid valve inside the rear wall automatically opens and fresh beverage flows into the bowl until the sensor gets covered again.

The solenoid valve opening occurs with about 10 seconds delay to avoid that the irregular waving of product surface, occasionally discovering sensor, may be understood as level dropping "cause of dispensing".

If the solenoid valve remains open longer then 5 minutes and the product level doesn't reaches the sensor, the top covers lights blinks and an acoustic alarm is activated.

### 3. 1 DESCRIPTION OF CONTROLS



**IMPORTANT**

The automatic control system only works with mounted container lids.

Each Autofill Device is equipped with a three position switch located on the rear wall (D). Its functions are as follows:

- I position : Only top cover lights are turned ON, provided that the power switch of the unit is set to I.
- 0 position : Both top cover lights and Autofill Device are turned OFF.
- II position : Both Autofill Device and top cover lights are turned ON, provided that the power switch of the unit is set to I.

To operate the Autofill Device:

- 1 Set the power switch of the unit to I position.
- 2 Set the Autofill switch to II position.
- 3 Then:

- SMART model : put the mixer / refrigeration switch of the container in the desired position.
- DIGITAL model : press the mixer / refrigeration button of the container in the desired position.

**Note:** when Autofill switch is set to position 0, the unit performs as a standard unit not equipped with Autofill Device.

### 3. 2 OPERATIONAL HELPFUL HINTS

- 1 When the Autofill device is turned ON but the top cover of the bowl is not properly installed the lights blink but no acoustic alarm is present.
- 2 If the solenoid valve remains open longer than 5 minutes and the product level doesn't reach the sensor, the top covers lights blink and an acoustic alarm is activated.
- 3 After cleaning and sanitizing procedures carefully dry the bowl and the sensor to avoid that the water present on the bowl may be understood as level reaching the probe and "causing of stopping of the refill".

### 3. 3 INLET FLOW ADJUSTMENT

Proper Inlet flow adjustment (E) is factory preset. To change the flow, if needed, use a suitable Allen Key to turn the adjustment screw located on top of each Autofill Inlet as follows:(see figure 2)

- towards right (clockwise) to increase the inlet flow.
- towards left (counterclockwise) to decrease the inlet flow.

### 3. 4 IN-PLACE SANITIZATION

The In-Place Sanitization of the Autofill system is recommended to guarantee the best product taste and the highest unit efficiency. This section is a procedural guideline only and is subject to the requirements of the local Health Authorities.

Prior to perform the In-Place Sanitization the machine must be emptied of product. To do this proceed as follows:

- set the Autofill switch to 0 position.
- set the unit power switch to I position

- set the unit mixer/refrigeration switch to I position (Soft Drink mode)
- place a pail under each faucet and drain all product from bowls
- set all control switches to 0 position

1 Use a clean tank for each of the following:

b - Cleaning Tank - fill with warm (45-60 °C / 120 - 140 °F) potable water.

c - Sanitizing Tank - fill with sanitizing solution (100 PPM available chlorine concentration or 1 spoon of sodium hypochlorite diluted with half a gallon of water) according to your local Health Codes and manufacturer's specifications.

4 Repeat the following procedure on each of the unit bowls:

e - Disconnect the beverage source and in place of it connect the Cleaning Tank to the remote fill system line.

f - Set the unit Power Switch to position I and the Autofill switch (located on the rear cover of each bowl) in position II, until the cleaning water flows free from any beverage residue. Set both the Autofill Switch and the unit Power Switch to position 0 and drain all the liquid from the bowl.

g - Disconnect the Cleaning Tank and in place of it connect the Sanitizing Tank to the remote fill system line.

h - Set the unit Power Switch to position I and the Autofill switch (located on the rear cover of each bowl) in position II, until sanitizing solution only outflows. Flush at least a quarter of a gallon of sanitizing solution to make sure that all the system has been filled with it. Set both the Autofill Switch and the unit Power Switch to position 0 and drain from the bowl all the sanitizing solution.

i - Disconnect the Sanitizing Tank and in place of it connect the Beverage source to the remote fill system line.

j - Set the unit Power Switch to position I and the Autofill switch (located on the rear cover of each bowl) in position II, until full strength beverage outflows.

Set both the Autofill Switch and the unit Power Switch to position 0 and drain all the liquid from the bowl.

k - Set the unit Power Switch to position I and the Autofill switch (located on the rear cover of each bowl) in position II, dispense a cup of beverage and check its taste.

If not satisfactory, drain all the liquid from the bowl and repeat point G until obtaining a satisfactory tasting drink

**Note:** the above Autofill System In Place Sanitization must be followed by unit cleaning and sanitization as described in standard unit Operator's Manual.

### 4 ROUTINE MAINTENANCE

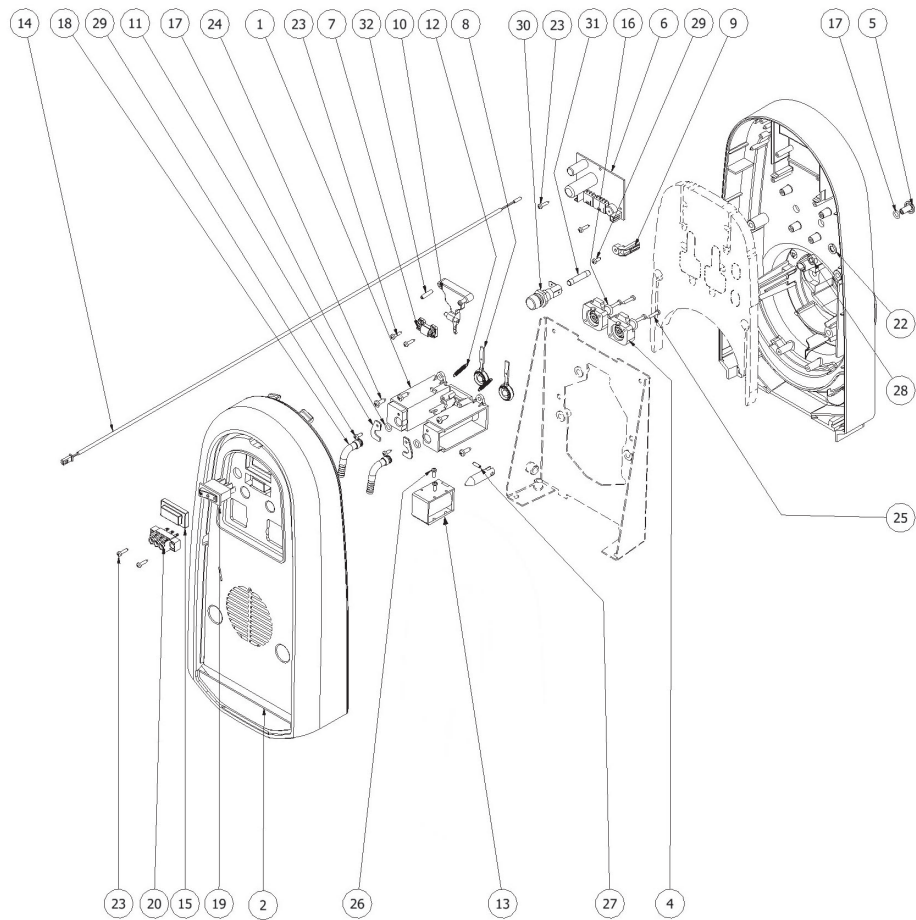
**Daily:** inspect the machine for signs of product leaks past seals and gaskets. If proper assembly does not stop leaks around seals or gaskets, check for improper lubrication, worn or damaged parts. Replace parts as needed.



**IMPORTANT**

**Weekly:** inspect the product sensor located on the rear wall of the bowl. Keep it clean and free from sugar.

## SPARE PARTS LIST



1	2U000-14000	Upper part of the white Autofill faucet	16	10028-03212	OR 8x2
1	2U000-14001	Upper part of the black Autofill faucet	17	22040-00000	OR 02025
2	2U000-09460	White rear cover	18	00222-02345	Elbow fitting
2	2U000-09461	Black rear cover	19	2U000-14700	Switch 0-I-II
4	2U000-14800	Lower part of the Autofill faucet	20	2U000-14600	Connector for external solenoid valve
5	2U000-14500	Sensor	22	10523-06000	M6 washer
6	2U000-12200	Level control card	23	10511-12913	2,9x13 screw
7	2U000-14200	Closing bridge for faucet	24	10511-13913	3,9x13 screw
8	3U000-14400	Faucet seal rubber	25	10512-12916	2,9x16 screw
9	2U000-14300	Reed sensor holder	26	10500-13008	M3x8 screw
10	2U000-14100	Actuator	27	10552-03010	3x10 Elastic spine
11	10028-01300	Elbow fitting fixing plate	28	10532-06000	M6 nut
12	22800-24609	Tire return spring	29	10512-12909	2,9x9,5 screw
13	22800-24600	Solenoid	30	10028-00300	Fuse holder
14	2Q000-03500	Proximity reed sensor	31	10028-00401	Fuse 6,3x32 - 1,25A - 250V
15	22800-24390	Switch protection	32	10513-04016	M4x16 screw