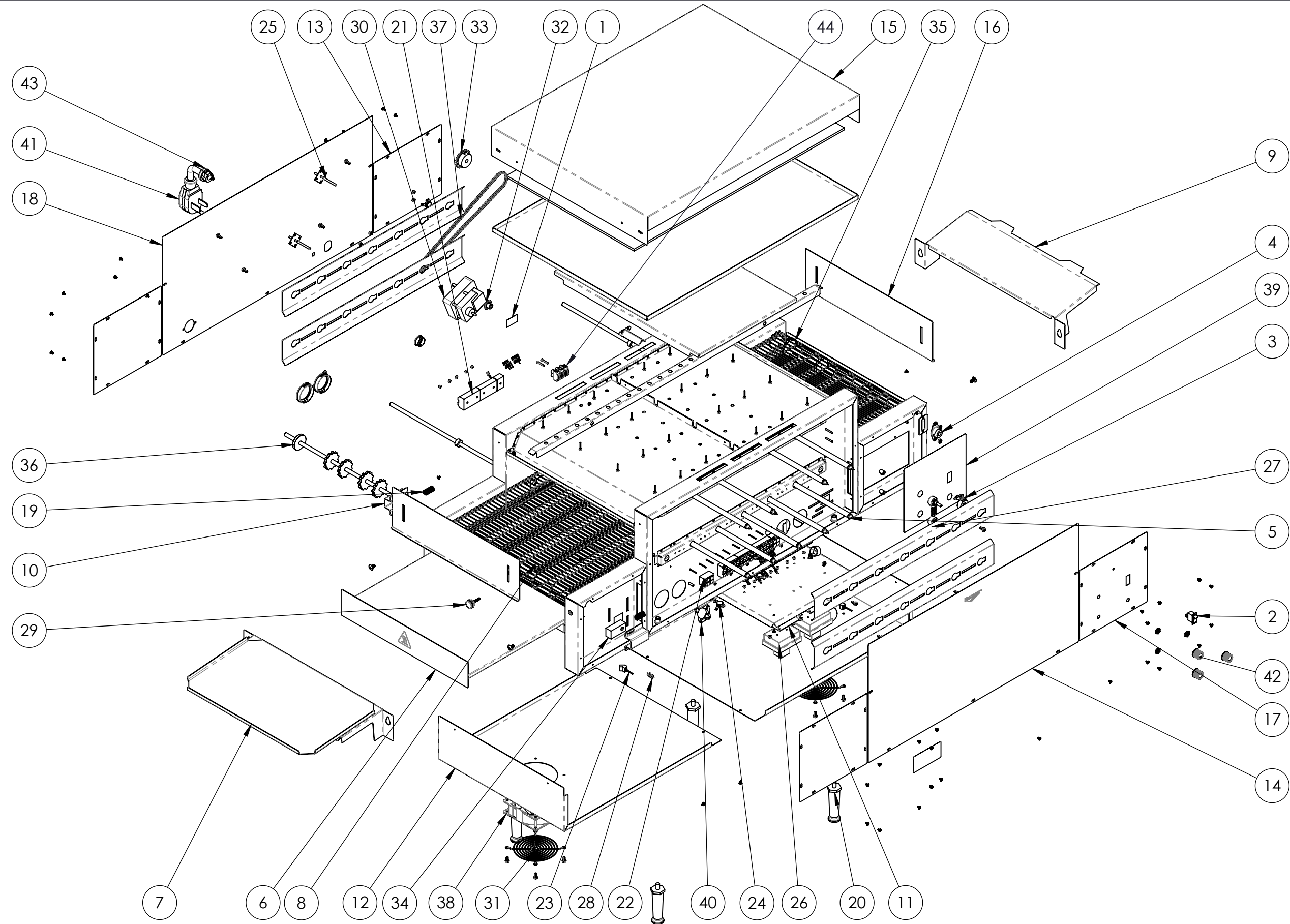




68 INCH CONVEYOR PIZZA OVEN 208V 18" RIGHT TO LEFT





68 INCH CONVEYOR PIZZA OVEN 208V 18" RIGHT TO LEFT

ITEM NO.	PART NUMBER	DESCRIPTION	PO4-20818R-L QTY.
1	324105	POWER CAUTION STICKER	1
2	719124	SWITCH, ROCKER SPST 10A 125V	1
3	B200918	SPEED CONTROL 1000 OHM	1
4	B201101	3/8" BEARING ASSEMBLY	2
5	59897	HEATER TUBE 19-3/8 208V 700W	9
6	B205106	18" JPO CRUMB TRAY ASSM	2
7	B205107	18" JPO UNLOAD TRAY ASSM	1
8	B205109	JPO 18" WIRE BELT	1
9	B305744	18" LOAD TRAY	1
10	B305756	PIZZA OVEN - IDLER BEARING HOUSING	2
11	B305762	PIZZA OVEN - CONTROL BRACKET	2
12	B305794	18" CONTROL BOX COVER	2
13	B305796	SMALL BLANK SIDE PANEL	3
14	B305797	LONG BLANK SIDE PANEL	1
15	B305800	18" TOP COVER	1
16	B305803	JPO 18" HEAT SHUTTER	2
17	B305835	CONTROL SIDE PANEL ANALOG	1
18	B305856	BLANK POWER SIDE PANEL	1
19	B400263	SPRING, .480" DIA, 1.000" LENGTH	2
20	B400301	METAL PLATED LEG 4"	4
21	B401033	TERMINAL BLOCK 5 POSITION	3
22	B401034	TERMINAL BLOCK 2 POSIITON	1
23	B401060	CORD,FAN,HP-75.24-A	2
24	B401107	SWITCH FAN CERAMIC	2
25	B401120	THERMISTOR PROBE	2
26	B401121	30 AMP CONTROL	2
27	B401122	POTENTIOMETER ASSEMBLY	2
28	B401162	PLUG BUTTON, 1/2"	1
29	B401188	KNOB, W/10-32 STUD PHENOLIC	3
30	B401201	DRIVE MOTOR 208/240V RMS 344	1

ITEM NO.	PART NUMBER	DESCRIPTION	PO4-20818R-L QTY.
31	B401220	GUARD, FAN	2
32	B401301	11-TOOTH SPROCKET	1
33	B401304	SPROCKET, 25B24 X 3/8	1
34	B401353	JPO SPRING LOADED BEARING	2
35	B401377	PO4 18" DRIVE SHAFT	1
36	B401378	PO4 18" IDLER SHAFT	1
37	B401460	29.75" CHAIN	1
38	B405011	230V CLASS B FAN MOTOR	2
39	B405020	PO4 CONTROL LABEL	1
40	B405028	68C THERMAL RESET	1
41	B401088	6-50P, 10/3, 72" POWER CORD	1
42	B405019	SILVER PUSH-ON KNOB W/ SET SCREW	3
43	B410028	STRAIN RELIEF, HEYCO 1824	1
44	B401014	TERMINAL STRIP, 3 CIRC, 15MM	1