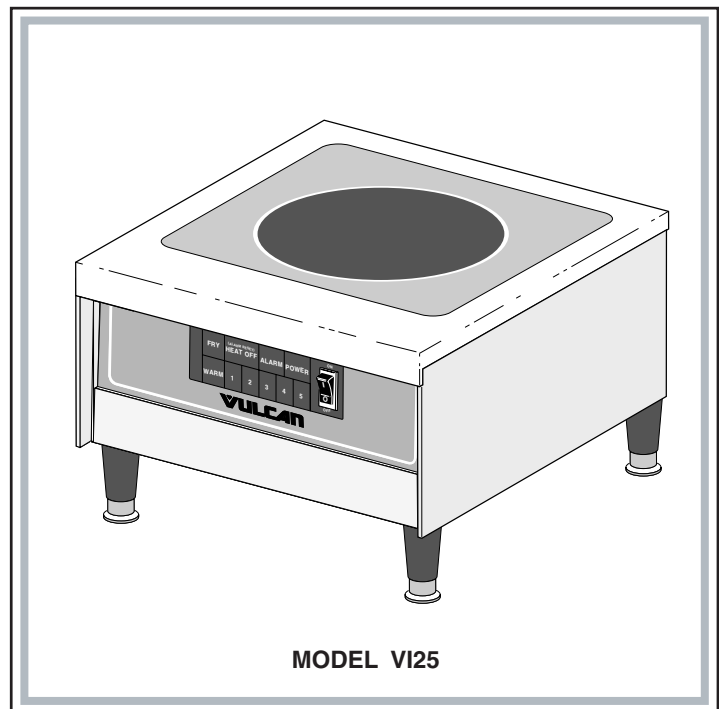


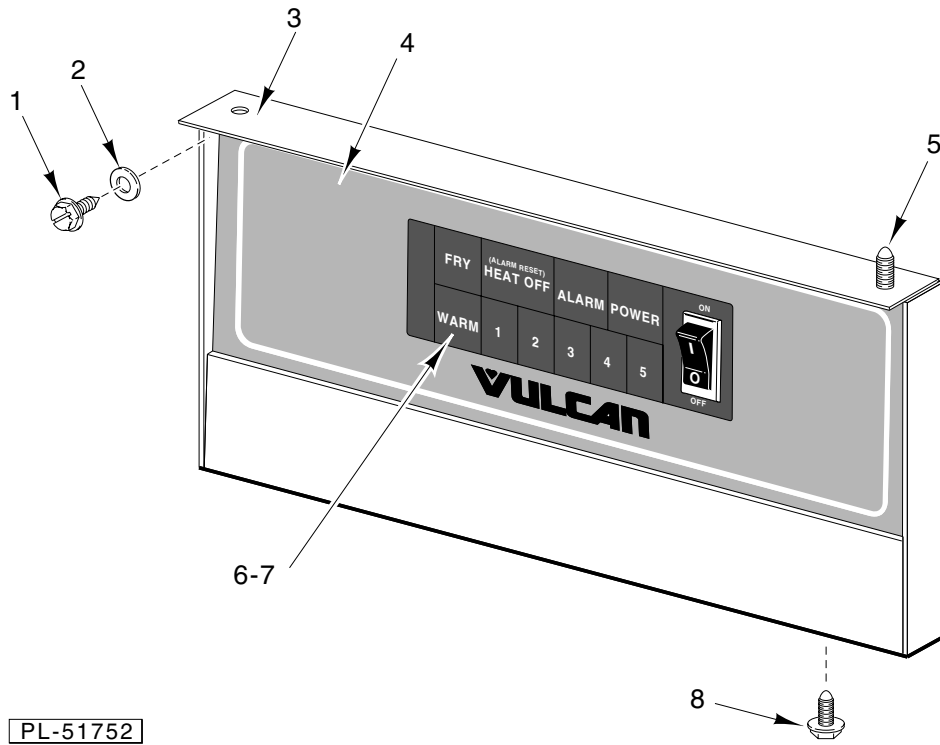
CATALOG OF REPLACEMENT PARTS

INDUCTION COOKTOP

MODEL

VI25

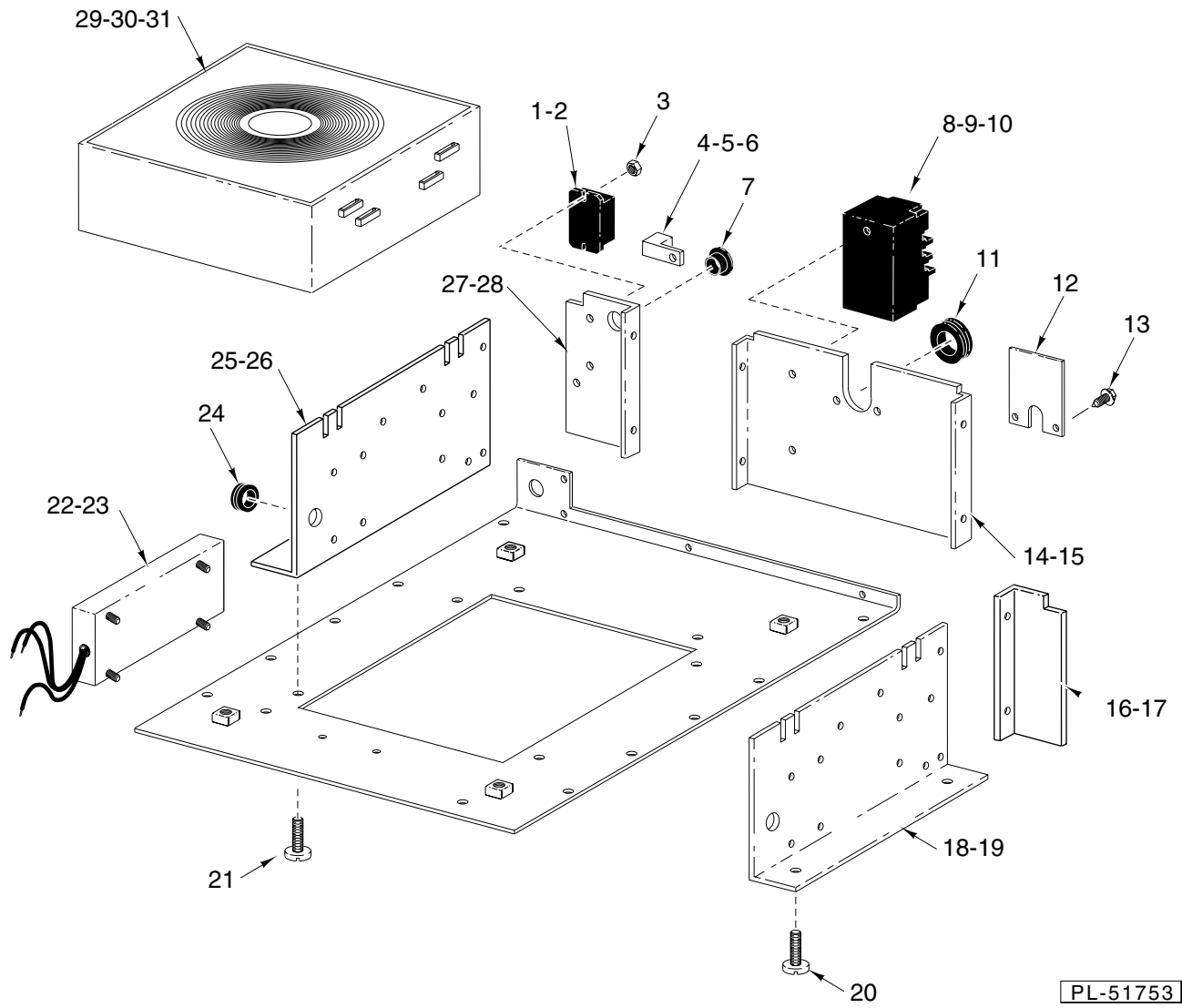




PL-51752

CONTROL PANEL

ILLUS.	PART NO.	NAME OF PART	AMT.
1	SD-34-49	Self-Tapping Screw 8-32 x 1½ Hex Washer Hd., Type T	2
2	415675-1	Washer - Nobestos	2
3	357976-1	Control Panel Assy.	1
4	357978-1	Overlay - Control Panel	1
5	SD-34-62	Self-Tapping Screw 10-32 x 1½ Hex Washer Hd., Type T	2
6	357985-1	Control - Induction Touchpad	1
7	NS-46-51	Nut Assy. 8-32 Hex	4
8	SD-34-62	Self-Tapping Screw 10-32 x 1½ Hex Washer Hd., Type T	2

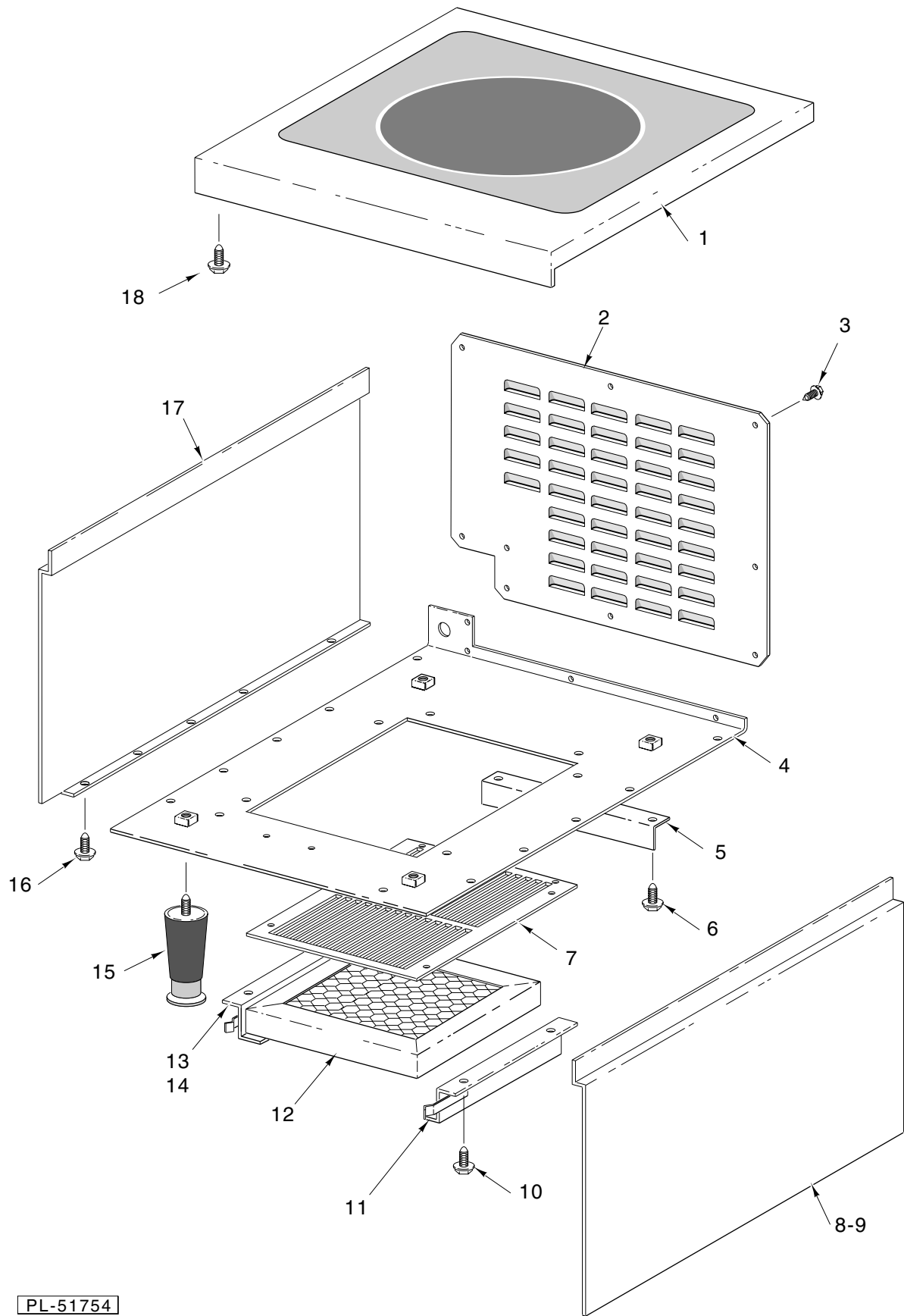


PL-51753

DIVERTER PANELS & COMPONENTS

DIVERTER PANELS & COMPONENTS

ILLUS. PL-51753	PART NO.	NAME OF PART	AMT.
1	822034	Block - Power Distribution	1
2	SC-53-3	Mach. Screw 10-24 x $\frac{3}{16}$ Truss Hd., Slotted	2
3	NS-44-9	Nut Assy 10-24 Hex "KEPS"	2
4	417856-1	Lug - Grounding (With Set Screw)	1
5	SC-53-41	Mach. Screw $\frac{1}{4}$ -20 x $\frac{1}{2}$ Truss Hd. SST	1
6	NS-46-52	Nut - $\frac{1}{4}$ -20 Hex "Keps"	1
7	FE-24-24	Bushing - Elect. Snap	1
8	358671-1	Relay - 30 Amp. (Panel Mounted)	1
9	SC-18-32	Mach. Screw 8-32 x $\frac{3}{8}$ Pan Hd.	2
10	NS-44-7	Nut Assy 8-32 Keps Hex	2
11	358670-1	Grommet - Rubber	1
12	357951-1	Cover - Hole	1
13	SD-34-62	Self-Tapping Screw 10-32 x $\frac{1}{2}$ Hex Washer Hd., Type T	2
14	357948-1	Diverter - Air Flow (Lower)	1
15	SD-34-62	Self-Tapping Screw 10-32 x $\frac{1}{2}$ Hex Washer Hd., Type T	4
16	357952-1	Diverter - Air Flow (R.H.)	1
17	SD-34-62	Self-Tapping Screw 10-32 x $\frac{1}{2}$ Hex Washer Hd., Type T	2
18	357954-1	Bracket - Inverter Support (R.H.)	1
19	NS-46-52	Nut - $\frac{1}{4}$ -20 Hex "Keps"	2
20	SC-53-41	Mach. Screw $\frac{1}{4}$ -20 x $\frac{1}{2}$ Truss Hd. SST	2
21	SC-53-41	Mach. Screw $\frac{1}{4}$ -20 x $\frac{1}{2}$ Truss Hd. SST	2
22	358668-1	Filter-Line	4
23	NS-44-5	Nut Assy. 6-32 Hex "Keps"	4
24	358670-1	Grommet - Rubber	1
25	357954-2	Bracket - Inverter Support (L.H.)	1
26	NS-46-52	Nut - $\frac{1}{4}$ -20 Hex "Keps"	2
27	357953-1	Diverter - Air Flow (L.H.)	1
28	SD-34-62	Self-Tapping Screw 10-32 x $\frac{1}{2}$ Hex Washer Hd., Type T	2
29	358675-1	Inverter - Induction 2.5 KW	1
30	SC-200-2	Mach. Screw M4 x 0.7 x 10mm Slotted Pan Hd.	4
31	WL-3-12	Lockwasher 8 Medium	4
	FE-25-28	Fuse 250 V., 20 Amps.	1
	344775-1	Label - Ground Marker	1
	805782	Label-Disconnect Power	1



PL-51754

HOUSING UNIT

HOUSING UNIT

ILLUS. PL-51754	PART NO.	NAME OF PART	AMT.
1	358672-1	Glass Top Assy. (Single Induction)	1
2	357955-1	Back Panel Assy.	1
3	SD-34-62	Self-Tapping Screw 10-32 x 1/2 Hex Washer Hd., Type T	11
4	357995-1	Bottom Assy.	1
5	357960-1	Bracket - Filter	1
6	SD-34-62	Self-Tapping Screw 10-32 x 1/2 Hex Washer Hd., Type T	2
7	357994-1	Screen - Filter	1
8	357993-1	Side Panel Assy. (R.H.)	1
9	SD-34-62	Self-Tapping Screw 10-32 x 1/2 Hex Washer Hd., Type T	5
10	SD-34-62	Self-Tapping Screw 10-32 x 1/2 Hex Washer Hd., Type T	2
11	357996-1	Bracket Assy. Filter Short (R.H.)	1
12	357998-1	Filter	1
13	357996-2	Bracket Assy. Filter short (L.H.)	1
14	SD-34-62	Self-Tapping Screw 10-32 x 1/2 Hex Washer Hd., Type T	2
15	421496-1	Leg (4" Adjustable)	4
16	SD-34-62	Self-Tapping Screw 10-32 x 1/2 Hex Washer Hd., Type T	5
17	357993-2	Side Panel Assy. (L.H.)	1
18	SD-34-62	Self-Tapping Screw 10-32 x 1/2 Hex Washer Hd., Type T	2

