

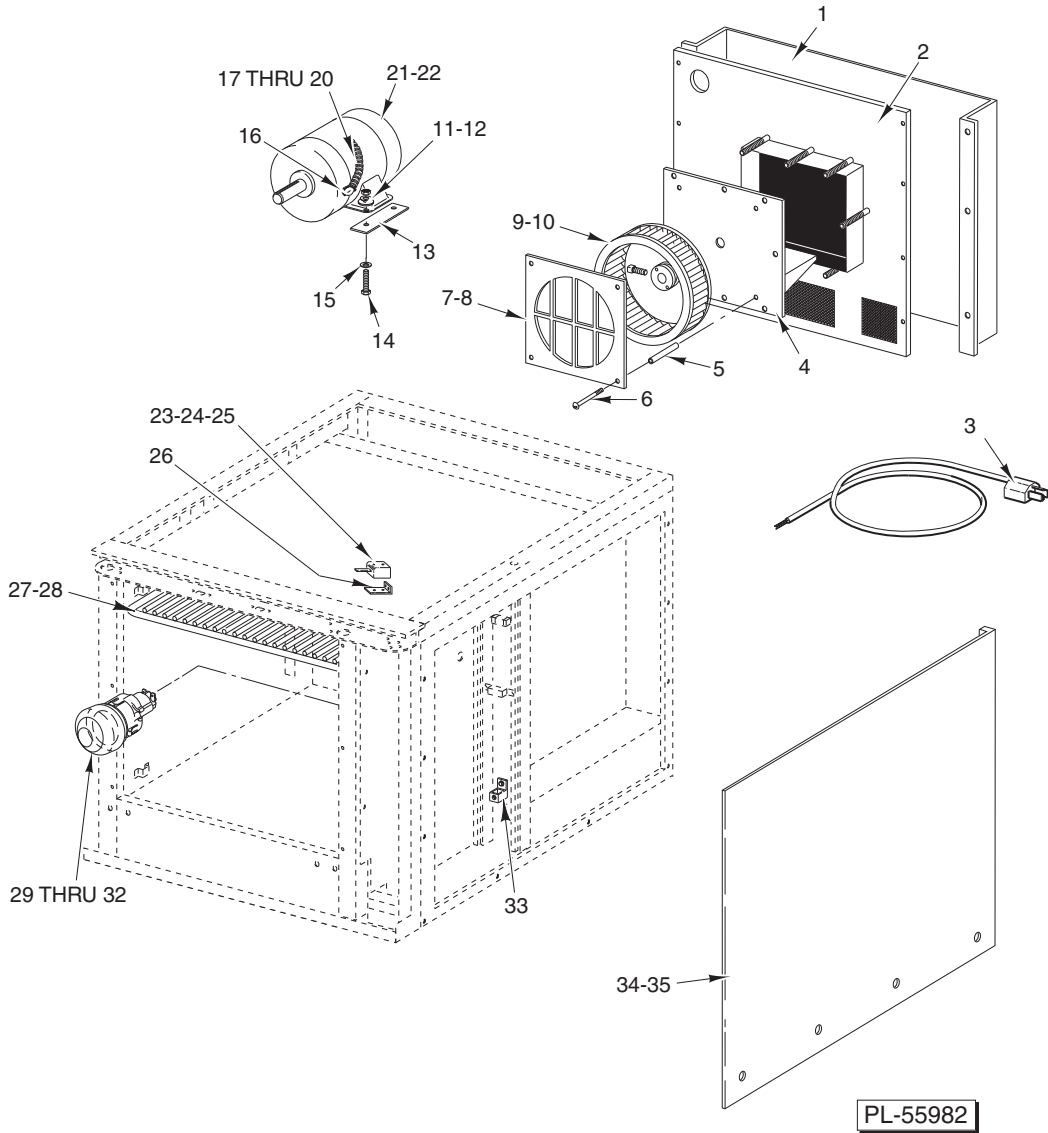
# *CATALOG OF REPLACEMENT PARTS*



## *GAS CONVECTION OVENS*

WKG	ML-126620
WKGD	ML-126621
WKGC	ML-126622
WKGX	ML-126623
WKGDX	ML-126624
WKGDX	ML-126625
WLGO	ML-136758

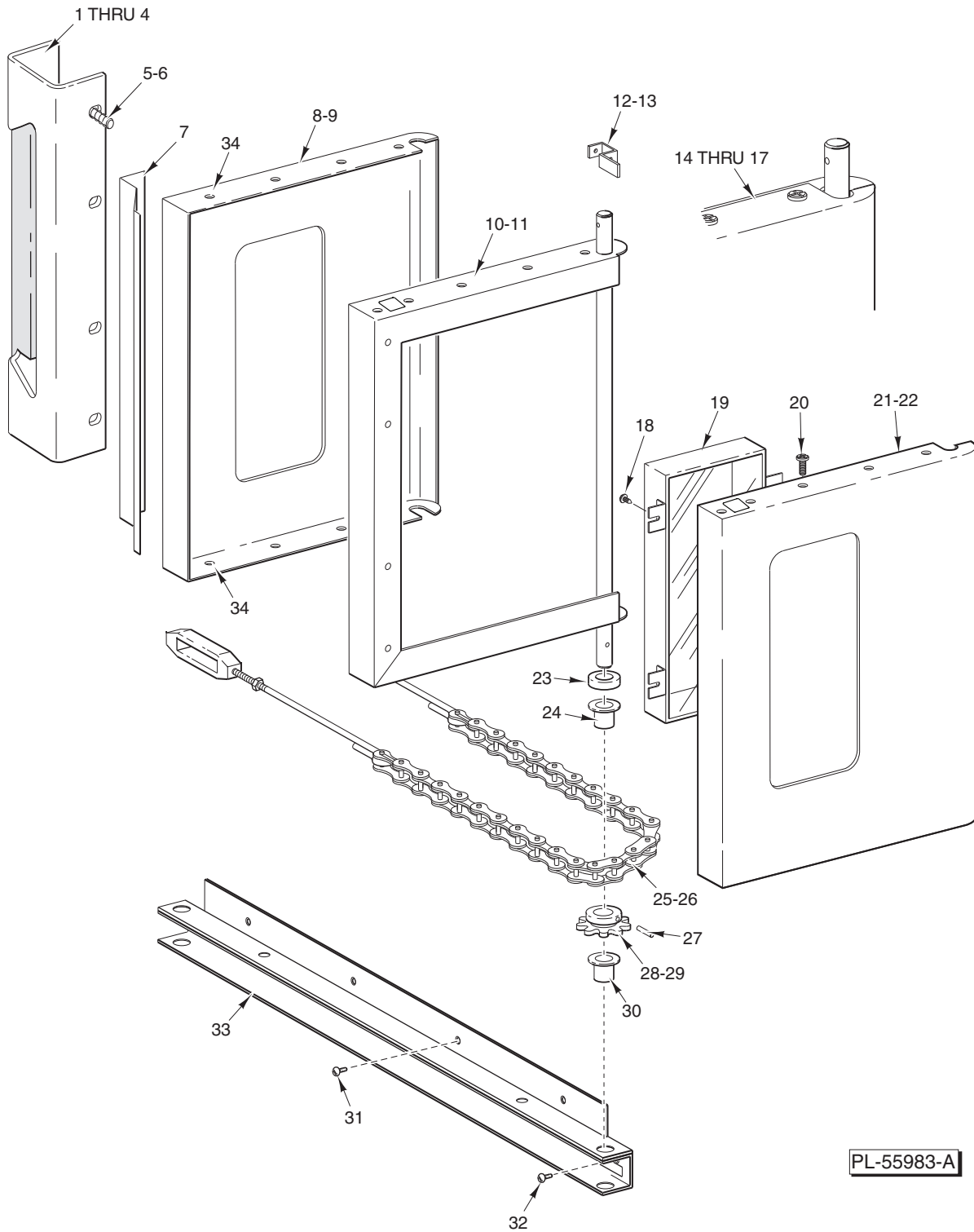
**For additional information on Wolf Range or to locate an authorized parts and service provider in your area, visit our website at [www.wolfrange.com](http://www.wolfrange.com)**



OVEN PANELS

## OVEN PANELS

ILLUS.	PART NO.	NAME OF PART	AMT.
	PL-55982		
1	00-424840-00002	Panel – Back (SST) (Optional) .....	1
2	00-424153-000G1	Back – Panel Assy. ....	1
3	00-405016-00001	Cord – Electric Supply (120 V. Only) .....	1
4	00-423289-000G1	Motor Mount .....	1
5	00-411289-00004	Spacer – Fan Housing .....	4
6	SC-120-15	Mach. Screw 1/4-20 x 4 Rd. Hd. ....	4
7	00-411136-00004	Fan – Cover (60 Hz.) .....	1
8	00-411136-00003	Fan – Cover (50 Hz.) .....	1
9	00-415780-00003	Wheel – Blower (60 Hz.) .....	1
10	00-415780-00005	Wheel – Blower (50 Hz.) .....	1
11	WS-029-46	Washer .....	4
12	NS-046-86	Nut Assy. 5/16-18 KEPS Hex .....	4
13	00-358723-00001	Spacer – Steel .....	2
14	SC-113-65	Cap Screw 9/16-18 x 1 1/4 Hex Hd. ....	4
15	WS-029-46	Washer .....	4
16	FE-002-52	Connector – Conduit 3/8 TS (90 Deg.) .....	1
17	FE-006-05	Lock Nut 1/2 .....	1
18	00-414540-00B35	Conduit 3/8 x 35 Lg. ....	1
19	00-342285-00001	Bushing – Plastic .....	2
20	FE-002-03	Connector – Conduit 3/8 TS Straight .....	1
21	00-358516-00001	Motor 1/2 Hp. (2 Speed) (115/50/60/1) .....	1
22	00-358516-00002	Motor 1/2 Hp. (2 Speed) (208-240/50/60/1) .....	1
23	00-411496-000F1	Switch – Micro .....	1
24	NS-038-08	Lock Nut 1/4-20 Hex .....	2
25	WS-029-49	Washer .....	2
26	00-425324-00001	Bracket – Door Switch .....	1
27	00-411265-00011	Rack Assy. (WKG, WKGD, WKGC) .....	AR
28	00-411265-00010	Rack Assy. (WKGX, WKGD, WKGCX) .....	AR
29	00-357036-00001	Oven Lamp (40 W.) (120-130 V.) .....	2
30	00-357036-00002	Oven Lamp (40 W.) (250 V.) .....	2
31	00-423832-00001	Cover – Light (Metal) .....	2
32	00-357036-00003	Lens – Lamp (Glass) .....	1
33	00-417856-00001	Lug – Grounding (With Set Screw) .....	1
34	00-424140-00002	Panel – Outer (RH) (SST) (WKG, WKGD, WKGC) .....	1
	00-424140-00005	Panel – Outer (RH) (Aluminized) (WLGO) .....	1
35	00-424228-00002	Panel – Outer (RH) (SST) (WKGX, WKGD, WKGCX) .....	1
	00-427617-00001	Flue – Deflector Assy. ....	1
	00-413627-000G1	Tube – Snorkel Assy. ....	1
	00-402558-00004	Clip – Bulb .....	2
	00-346358-00002	Thermostat (High Limit) (With Mounting Plate) .....	1
	00-346357-00001	Thermostat (High Limit) .....	1

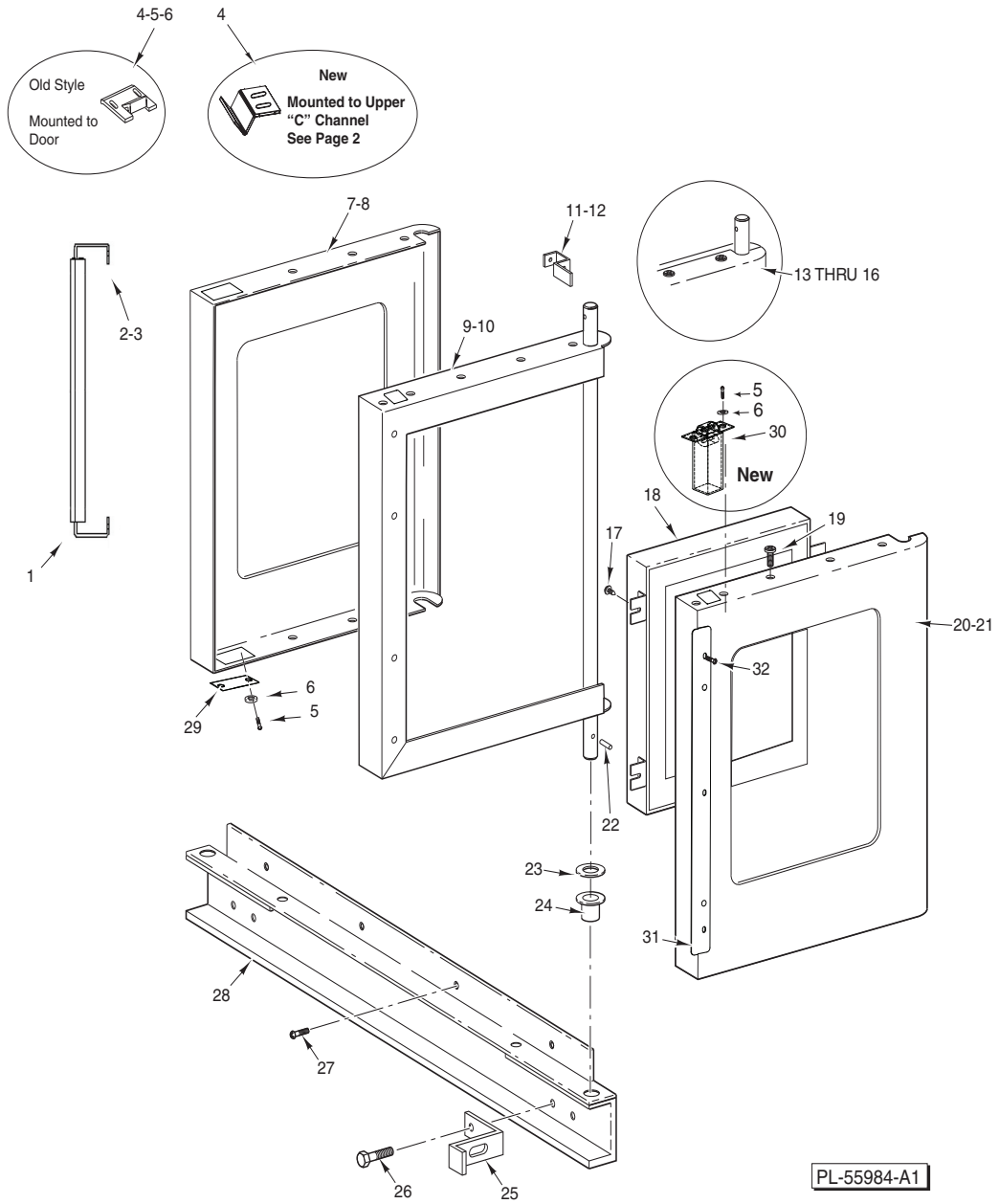


PL-55983-A

**DOOR ASSEMBLY  
(SIMULTANEOUSLY OPENING DOORS)**

## DOOR ASSEMBLY (SIMULTANEOUSLY OPENING DOORS)

ILLUS. PL-55983-A	PART NO.	NAME OF PART	AMT.
1	00-356562-00001	Handle – Door .....	1
2	00-356563-00001	Grip – Front .....	1
3	00-356563-00002	Grip – Rear .....	1
4	SC-113-98	Mach. Screw 10-24 x 1/2 Hex Washer Hd. ....	3
5	SC-041-01	Cap Screw 1/4-20 x 3/4 Hex Hd. (SST) .....	4
6	WL-019-37	Lockwasher 1/4 Light .....	4
7	00-356550-00001	Latch – Friction .....	1
8	00-421913-00002	Shell – Outer Door (RH) (W/O Window) .....	1
	00-421913-00004	Shell – Outer Door (LH) (W/O Window) .....	1
9	00-421913-00001	Shell – Outer Door (RH) (W/Window) .....	1
	00-421913-00003	Shell – Outer Door (LH) (W/Window) .....	1
10	00-421904-000G1	Frame Assy. – Door (LH) .....	1
11	00-421905-000G1	Frame Assy. – Door (RH) .....	1
12	00-424163-00001	Lever – Door Switch .....	1
13	SD-034-52	Self-Tapping Screw 8-32 x 1 Hex Washer Hd., Type T .....	1
14	00-499289-000G1	<b>Door Assy. (LH) (W/Window) (Chain Door) (New Style)</b> .....	1
	00-424730-00001	Door Assy. (LH) (W/Window) (Chain Door) (Old Style) .....	1
15	00-499289-000G2	<b>Door Assy. (LH) (W/O Window) (Chain Door) (New Style)</b> .....	1
	00-424730-00002	Door Assy. (LH) (W/O Window) (Chain Door) (Old Style) .....	1
16	00-499290-000G1	<b>Door Assy. (RH) (W/Window) (Chain Door) (New Style)</b> .....	1
	00-424731-00001	Door Assy. (RH) (W/Window) (Chain Door) (Old Style) .....	1
17	00-499290-000G2	<b>Door Assy. (RH) (W/O Window) (Chain Door) (New Style)</b> .....	1
	00-424731-00002	Door Assy. (RH) (W/O Window) (Chain Door) (Old Style) .....	1
18	SD-034-62	Self-Tapping Screw 10-32 x 1/2 Hex Washer Hd., Type T .....	4
19	00-358534-00001	Window Assy. ....	1
20	SD-034-22	Mach. Screw 10-32 x 1/2 Phil. Pan Hd. ....	9
21	00-358532-00001	Shell – Inner Door (RH & LH) (W/Window) .....	1
22	00-358533-00003	Shell – Inner Door (RH & LH) (W/O Window) .....	1
23	00-343143-00002	Washer .....	2
24	00-347080-00002	Bearing – Door Shaft .....	2
25	00-343608-00002	Door Chain & Turnbuckle Assy. ....	2
26	00-352667-00001	Cable – Door Stop .....	1
27	PS-004-11	Spiral Pin 3/16 x 1 1/4 Heavy .....	2
28	00-342166-00001	Sprocket – Door Shaft .....	2
29	SC-047-28	Set Screw 1/4-28 x 3/8 Hex Hdls., Cup Pt. ....	2
30	00-347080-00002	Bearing – Door Shaft .....	2
31	SC-022-40	Mach. Screw 1/4-20 x 3/4 Phil. Flat Hd. ....	4
32	SC-113-90	Mach. Screw 1/4-20 x 3/4 Hex Hd. ....	2
33	00-499300-000G1	<b>Channel – Door Sill Weldment (Chain) (New Style)</b> .....	1
	00-357846-00001	Channel – Door Sill Weldment (Old Style) .....	1
34	SC-117-73	Screw, Roller Latch, Plate .....	2

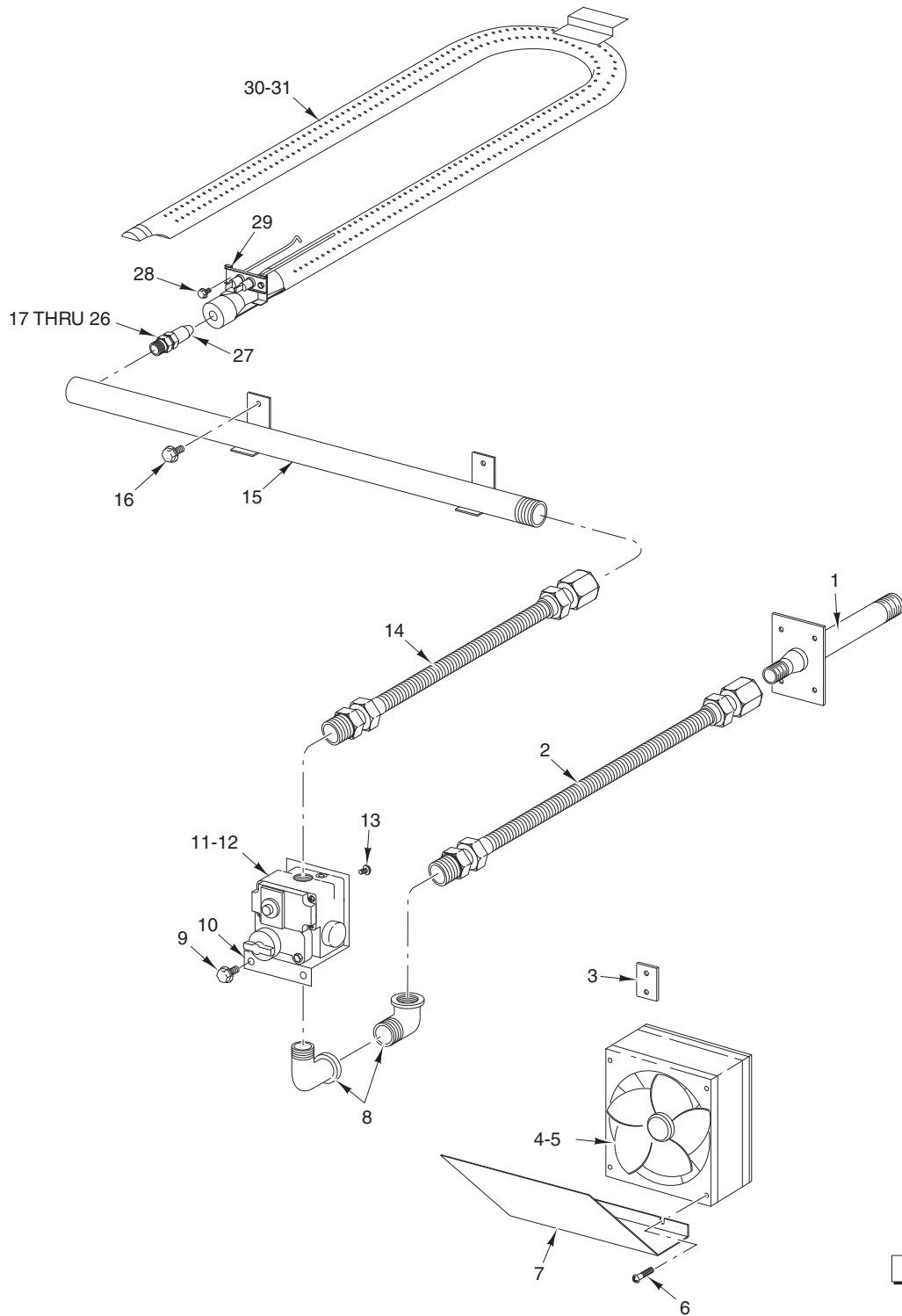


**DOOR ASSEMBLY  
(INDEPENDENTLY OPENING DOORS)**

## DOOR ASSEMBLY (INDEPENDENTLY OPENING DOORS)

ILLUS.	PART NO.	NAME OF PART	AMT.
	PL-55984-A1		
1	00-357929-00001	Handle – Door (Black) .....	1
2	SC-041-01	Cap Screw 1/4-20 x 3/4 Hex Hd. (SST) .....	2
3	WL-019-37	Lockwasher 1/4 Light .....	2
4	<b>00-497585-00001</b>	<b>Strike Plate (New Style) (Attaches to Upper “C” Channel) (See Pg. 16) .....</b>	<b>2</b>
	00-423847-00001	Strike – Door (Old Style) (Mounted to Door) .....	1
5	SC-117-73	Mach. Screw .....	4
6	WL-019-35	Lockwasher .....	4
7	00-358600-00001	Shell – Outer Door (RH & LH) (W/Window) .....	1
8	00-358600-00002	Shell – Outer Door (RH & LH) (W/O Window) (Not Shown) .....	1
9	00-421905-000G1	Frame Assy. – Door (RH) .....	1
10	00-421904-000G2	Frame Assy. – Door (LH) .....	1
11	00-424163-00001	Lever – Door Switch .....	1
12	SD-034-52	Self-Tapping Screw 8-32 x 1 Hex Washer Hd., Type T .....	1
13	<b>00-499285-000G1</b>	<b>Door Assy. (LH) (W/Window) (Independent Doors) (New Style) .....</b>	<b>1</b>
	00-358529-00005	Door Assy. (LH) (W/Window) (Independent Doors) (Old Style) .....	1
14	<b>00-499285-000G2</b>	<b>Door Assy. (LH) (W/O Window) (Independent Doors) (New Style) .....</b>	<b>1</b>
	00-358529-00006	Door Assy. (LH) (W/O Window) (Independent Doors) (Old Style) .....	1
15	<b>00-499286-000G1</b>	<b>Door Assy. (RH) (W/Window) (Independent Doors) (New Style) .....</b>	<b>1</b>
	00-358530-00003	Door Assy. (RH) (W/Window) (Independent Doors) (Old Style) .....	1
16	<b>00-499286-000G2</b>	<b>Door Assy. (RH) (W/O Window) (Independent Doors) (New Style) .....</b>	<b>1</b>
	00-358530-00004	Door Assy. (RH) (W/O Window) (Independent Doors) (Old Style) .....	1
17	SD-034-62	Self-Tapping Screw 10-32 x 1/2 Hex Washer Hd., Type T .....	4
18	00-358534-00001	Window Assy. .....	1
19	SD-034-22	Mach. Screw 10-32 x 1/2 Phil. Pan Hd. .....	8
20	00-358532-00001	Shell – Inner Door (RH & LH) (W/Window) .....	1
21	00-358533-00003	Shell – Inner Door (RH & LH) (W/O Window) .....	1
22	PS-004-11	Spiral Pin 3/16 x 1 1/4 Heavy .....	1
23	00-347080-00002	Bearing – Door Shaft .....	1
24	00-343143-00002	Washer .....	2
25	<b>00-499263-00001</b>	<b>Door Stop (New Style) .....</b>	<b>1</b>
	00-424158-00001	Door Stop (Old Style) .....	1
26	SC-113-90	Mach. Screw 1/4-20 x 3/4 Hex Hd. .....	2
27	SC-022-40	Mach. Screw 1/4-20 x 3/4 Phil. Flat Hd. .....	4
28	<b>00-499262-00001</b>	<b>Channel – Door Sill Weldment (New Style) .....</b>	<b>1</b>
	00-357846-00001	Channel – Door Sill Weldment (Old Style) .....	1
29	00-499264-00001	Cover, Cutout .....	1
30	<b>00-497586-00001</b>	<b>Roller Latch (New Style) (Mounted to Top of Doors) .....</b>	<b>2</b>
	00-347545-00001	Roller Ball Door Latch (Old Style) (Mounted to “C” Channel) .....	1
31	00-357837-00001	Door End Seal (LH Door) .....	1
32	SC-113-78	Mach. Screw .....	3
	00-423848-00001	Shim – Door Strike .....	AR

NOTE: When ordering items 7 or 8 for an old style oven, 2 of part [499264-1](#), 4 of part [SC-117-73](#) and 4 of part [WL-019-35](#) are also needed.

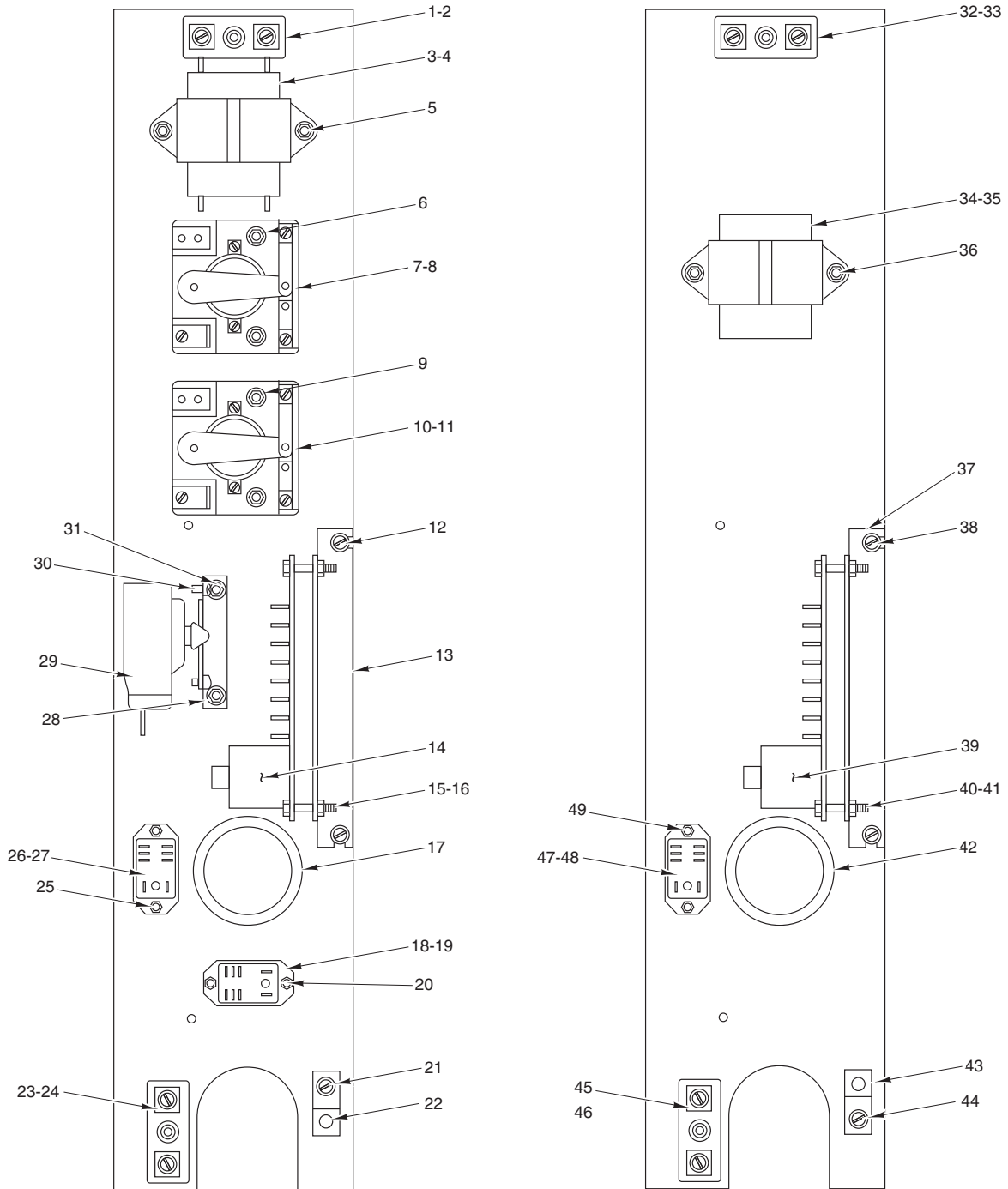


PL-55985

**GAS PIPING AND FLAME CHAMBER**

## GAS PIPING AND FLAME CHAMBER

ILLUS.	PART NO.	NAME OF PART	AMT.
PL-55985			
1	00-423819-00003	Pipe – Weldment Gas Inlet .....	1
2	00-423828-00001	Tube – Flex (30") (Prior to March 15, 2005) .....	1
	00-423828-00006	Tube – Flex (30" LG 3/8 MPT) ( March 15, 2005 to Present) .....	1
3	00-425433-00001	Fan – Clip .....	1
4	00-424940-00001	Fan – Cooling (120 V.) .....	1
5	00-424940-00002	Fan – Cooling (230 V.) .....	1
6	SD-034-52	Self-Tapping Screw 8-32 x 1 Hex Washer Hd., Type T .....	2
7	00-423820-00001	Deflector – Air .....	1
8	FP-013-17	Elbow – Street 1/2 x 90 Deg. ....	2
9	SC-113-80	Cap Screw 1/4-20 x 1/2 Hex Hd. ....	4
10	00-424728-00001	Bracket – Gas Valve .....	1
11	00-410841-00018	Valve – Gas Control (NAT) (Prior to March 15, 2005) .....	1
	00-497269-00001	Valve – Gas Control (NAT) (March 17, 2005 to Present) .....	1
12	00-410841-00019	Valve – Gas Control (PRO/BUT) (Prior to March 15, 2005) .....	1
	00-497269-00002	Valve – Gas Control (PRO/BUT) (March 17, 2005 to Present) .....	1
13	SC-117-60	Mach. Screw 10-32 x 1 1/4 Oval Hd. ....	2
14	00-423828-00002	Tube – Flex (Prior to March 15, 2005) .....	1
	00-423828-00007	Tube – Flex (18" LG 3/8 MPT) (March 15, 2005 to Present) .....	1
15	00-424138-00001	Manifold .....	1
16	SC-113-80	Cap Screw 1/4-20 x 1/2 Hex Hd. ....	2
17	00-010901-00030	Orifice – Spud (30 Drill) (NAT) (Sea Level to 2000 Ft.) .....	1
18	00-010901-00032	Orifice – Spud (32 Drill) (NAT) (2000 to 2499 Ft.) .....	1
19	00-010901-00034	Orifice – Spud (34 Drill) (NAT) (3500 to 4499 Ft.) .....	1
20	00-010901-00035	Orifice – Spud (35 Drill) (NAT) (2000 to 4000 Ft.) .....	1
21	00-010901-00036	Orifice – Spud (36 Drill) (NAT) (4000 to 8000 Ft.) .....	1
22	00-010901-00037	Orifice – Spud (37 Drill) (NAT) (8500 to 10500 Ft.) .....	1
23	00-010901-00048	Orifice – Spud (48 Drill) (PRO/BUT) (Sea Level to 2499 Ft.) .....	1
24	00-010901-00049	Orifice – Spud (49 Drill) (PRO/BUT) (2500 to 4499 Ft.) .....	1
25	00-010901-00050	Orifice – Spud (50 Drill) (PRO/BUT) (4500 to 7499 Ft.) .....	1
26	00-010901-00051	Orifice – Spud (51 Drill) (Sea Level to 2000 Ft.) .....	1
27	00-417879-00001	Nozzle – Pilot Burner .....	1
28	SD-034-49	Self-Tapping Screw 8-32 x 1/2 Hex Washer Hd., Type T .....	2
29	00-424194-00001	Ignitor – Flame Detector .....	1
30	00-424135-000G1	Burner Assy. (WKG, WKGD, WKGC, WLGO) .....	1
31	00-424195-000G1	Burner Assy. (WKGX, WKGD, WKGCX) .....	1
	00-424191-000G1	Burner Access Cover .....	1

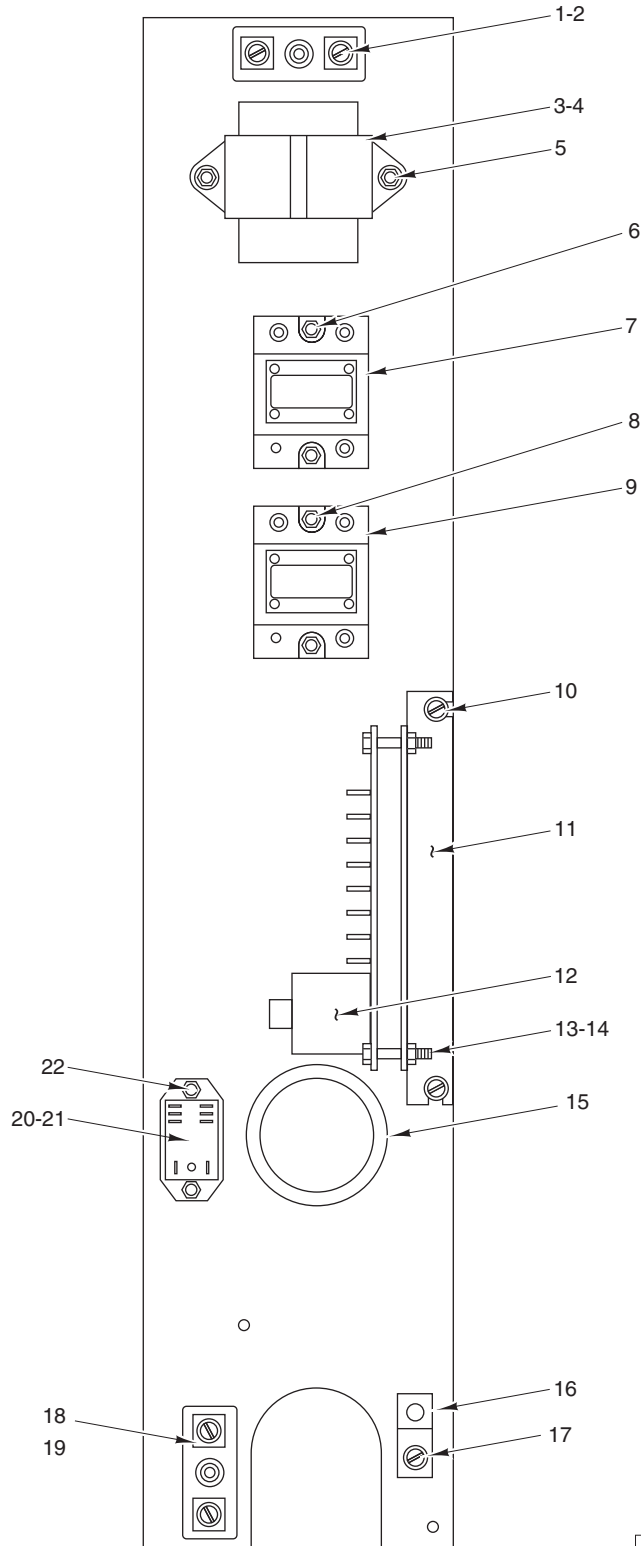


PL-55986

**ELECTRICAL COMPONENT PANEL**

**ELECTRICAL COMPONENT PANEL**

ILLUS.	PART NO.	NAME OF PART	AMT.
	PL-55986		
1	00-417934-000G1	Block – Porcelain Assy. ....	1
2	SD-034-52	Self-Tapping Screw 8-32 x 1 Hex Washer Hd., Type T .....	1
3	00-421758-000G1	Transformer (120 V.) (24 V. Output) .....	1
4	00-421758-000G2	Transformer (208-240 V.) (24 V. Output) .....	1
5	SD-032-07	Self-Tapping Screw 10-24 x 1/2 Hex Washer Hd., Type TT .....	2
6	SD-034-52	Self-Tapping Screw 8-32 x 1 Hex Washer Hd., Type T .....	2
7	00-411497-000A1	Relay (1 Pole) (120 V.) .....	1
8	00-411497-000A2	Relay (1 Pole) (200 V.) .....	1
9	SD-034-52	Self-Tapping Screw 8-32 x 1 Hex Washer Hd., Type T .....	2
10	00-411497-000A1	Relay (1 Pole) (120 V.) .....	1
11	00-411497-000A2	Relay (1 Pole) (200 V.) .....	1
12	SD-032-07	Self-Tapping Screw 10-24 x 1/2 Hex Washer Hd., Type TT .....	2
13	00-423760-00001	Bracket – Ignition Module .....	1
14	00-424137-00002	Control – Spark Ignition .....	1
15	SD-034-52	Self-Tapping Screw 8-32 x 1 Hex Washer Hd., Type T .....	2
16	NS-044-07	Nut Assy. 8-32 Hex KEPS .....	2
17	FE-024-23	Bushing – Electrical (Snap) .....	1
18	00-416535-00006	Relay – Heating (120 V.) .....	1
19	00-416535-00007	Relay – Heating (200-240 V.) .....	1
20	SD-034-49	Self-Tapping Screw 8-32 x 1/2 Hex Washer Hd., Type T .....	2
21	SD-032-07	Self-Tapping Screw 10-24 x 1/2 Hex Washer Hd., Type TT .....	1
22	00-417856-00001	Lug – Grounding (With Set Screw) .....	1
23	00-417934-000G1	Porcelain – Block Assy. ....	1
24	SD-034-52	Self-Tapping Screw 8-32 x 1 Hex Washer Hd., Type T .....	1
25	SD-034-49	Self-Tapping Screw 8-32 x 1/2 Hex Washer Hd., Type T .....	2
26	00-416535-00006	Relay – Heating (120 V.) .....	1
27	00-416535-00007	Relay – Heating (200-240 V.) .....	1
28	00-424832-00001	Bracket – Mounting .....	1
29	00-413764-00001	Thermostat (Roast & Hold) .....	1
30	SC-114-83	Mach. Screw 6-32 x 1/4 Pan Hd. ....	2
31	SD-032-07	Self-Tapping Screw 10-24 x 1/2 Hex Washer Hd., Type TT .....	2
32	00-417934-000G1	Porcelain – Block Assy. ....	1
33	SD-034-52	Self-Tapping Screw 8-32 x 1 Hex Washer Hd., Type T .....	1
34	00-411500-00012	Transformer (120 V.) (24 V. Output) .....	1
35	00-411500-00013	Transformer (208-240 V.) (24 V. Output) .....	1
36	SD-032-07	Self-Tapping Screw 10-24 x 1/2 Hex Washer Hd., Type TT .....	2
37	00-423760-00001	Bracket – Ignition Module .....	1
38	SD-032-07	Self-Tapping Screw 10-24 x 1/2 Hex Washer Hd., Type TT .....	1
39	00-424137-00002	Control – Spark Ignition .....	1
40	SD-034-52	Self-Tapping Screw 8-32 x 1 Hex Washer Hd., Type T .....	2
41	NS-044-07	Nut Assy. 8-32 Hex KEPS .....	2
42	FE-024-23	Bushing – Electrical (Snap) .....	1
43	00-417856-00001	Lug – Grounding (With Set Screw) .....	1
44	SD-032-07	Self-Tapping Screw 10-24 x 1/2 Hex Washer Hd., Type TT .....	1
45	00-417934-000G1	Porcelain – Block Assy. ....	1
46	SD-034-52	Self-Tapping Screw 8-32 x 1 Hex Washer Hd., Type T .....	1
47	00-416535-00006	Relay – Heating (120 V.) .....	1
48	00-416535-00007	Relay – Heating (200-240 V.) .....	1
49	SD-034-49	Self-Tapping Screw 8-32 x 1/2 Hex Washer Hd., Type T .....	1
	00-353589-00001	Probe Temperature (WKGD, WKGDx) .....	1
	00-423813-00003	Wire – Ignition (High Voltage) .....	1
	00-428428-000g1	Flame Sensor Wire .....	1

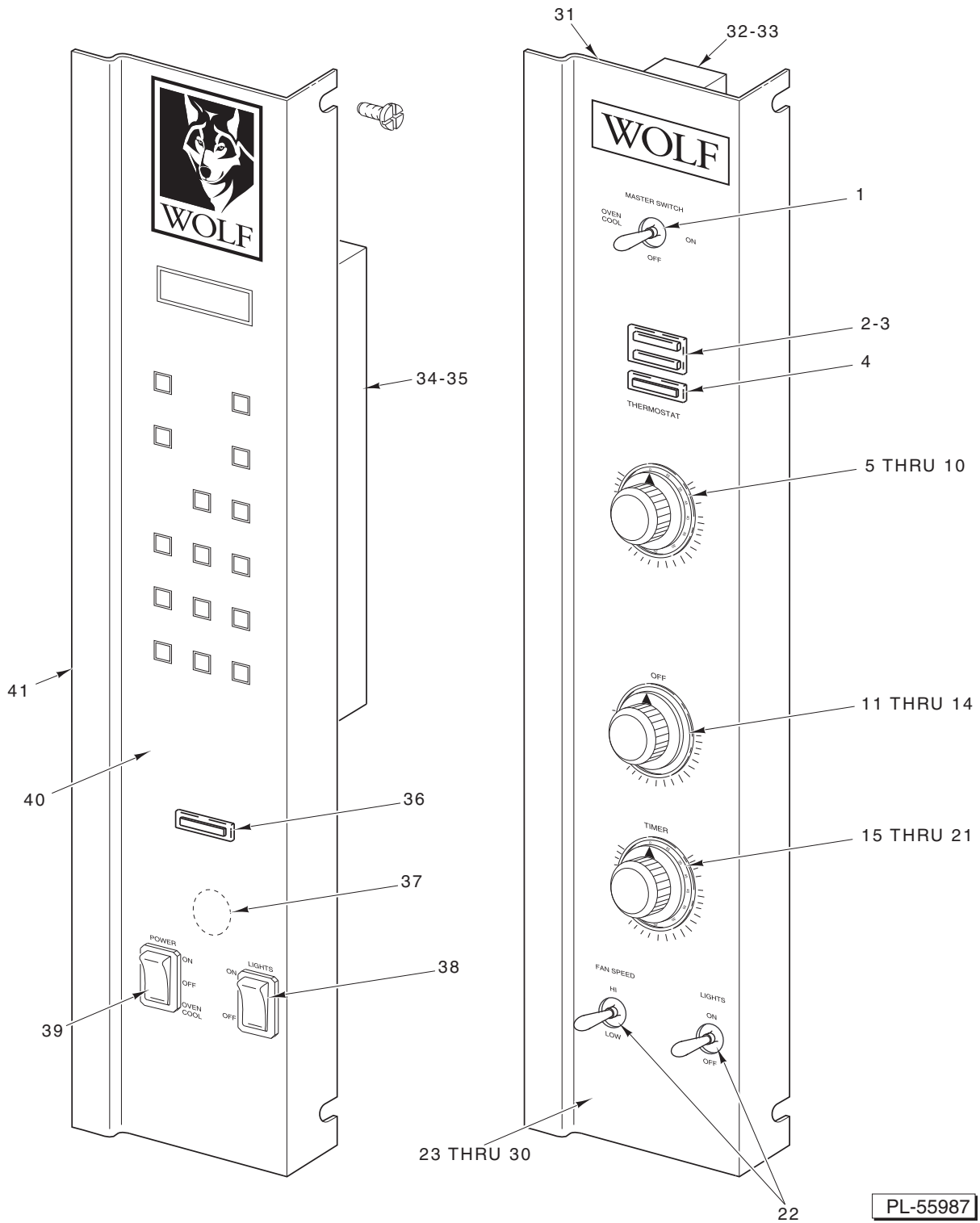


PL-55989

**ELECTRICAL COMPONENT PANEL  
(PROGRAMABLE)**

**ELECTRICAL COMPONENT PANEL  
(PROGRAMMABLE)**

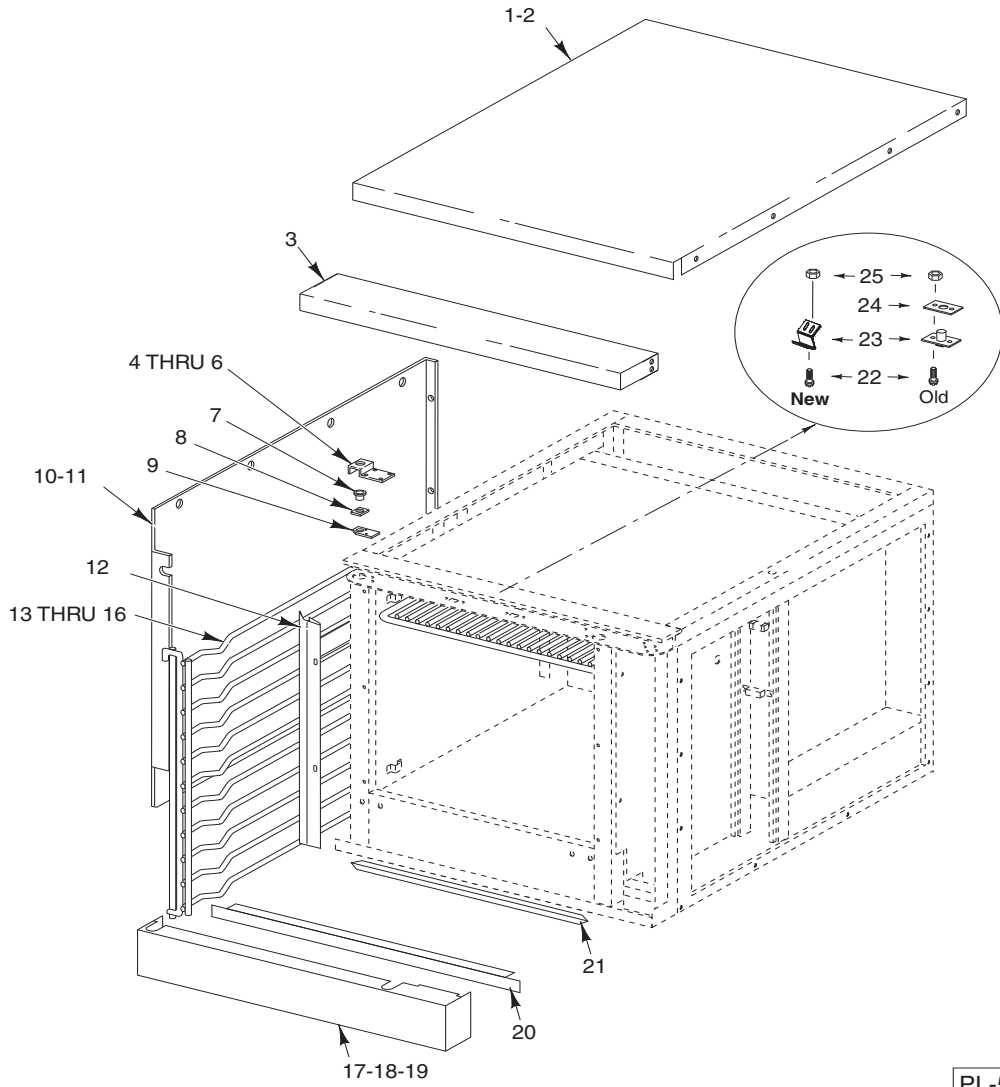
ILLUS.	PART NO.	NAME OF PART	AMT.
PL-55989			
1	00-417934-000G1	Porcelain – Block Assy. ....	1
2	SD-034-52	Self-Tapping Screw 8-32 x 1 Hex Washer Hd., Type T ....	1
3	00-421758-000G1	Transformer (120 V.) (24 V. Output) ....	1
4	00-421758-000G2	Transformer (208-240 V.) (24 V. Output) ....	1
5	SD-032-07	Self-Tapping Screw 10-24 x 1/2 Hex Washer Hd., Type TT ....	2
6	SD-034-52	Self-Tapping Screw 8-32 x 1 Hex Washer Hd., Type T ....	4
7	00-821875-00002	Relay – Solid State (50 Amp.) ....	2
8	SD-034-52	Self-Tapping Screw 8-32 x 1 Hex Washer Hd., Type T ....	4
9	00-821875-00002	Relay – Solid State (50 Amp.) ....	2
10	SD-032-07	Self-Tapping Screw 10-24 x 1/2 Hex Washer Hd., Type TT ....	1
11	00-423760-00001	Bracket – Ignition Module ....	1
12	00-424137-00002	Control – Spark Ignition ....	1
13	SD-034-52	Self-Tapping Screw 8-32 x 1 Hex Washer Hd., Type T ....	2
14	NS-044-07	Nut Assy. 8-32 Hex KEPS ....	2
15	FE-024-23	Bushing – Electrical (Snap) ....	1
16	00-417856-00001	Lug – Grounding (With Set Screw) ....	1
17	SD-032-07	Self-Tapping Screw 10-24 x 1/2 Hex Washer Hd., Type TT ....	1
18	SD-034-52	Self-Tapping Screw 8-32 x 1 Hex Washer Hd., Type T ....	1
19	00-417934-000G1	Porcelain – Block Assy. ....	1
20	00-416535-00006	Relay – Heating (120 V.) ....	1
21	00-416535-00007	Relay – Heating (200-240 V.) ....	1
22	SD-034-49	Self-Tapping Screw 8-32 x 1/2 Hex Washer Hd., Type T ....	2
	00-920883-00003	Probe Temperature (WKGCC, WKGCCX) ....	1
	00-423813-00003	Wire – Ignition (High Voltage) ....	1
	00-428428-000G1	Flame Sensor Wire ....	1



CONTROL PANEL

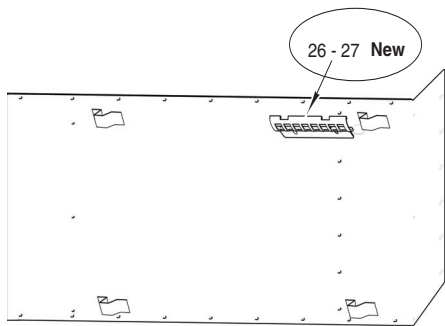
## CONTROL PANEL

ILLUS.	PART NO.	NAME OF PART	AMT.
	<b>PL-55987</b>		
1	00-340324-00008	Switch .....	1
2	00-354575-00002	Light – Indicator (110-120 V.) .....	1
3	00-354575-00001	Light – Indicator (200-240 V.) .....	1
4	00-354575-00004	Light – Indicator .....	1
5	00-411242-00001	Knob .....	1
6	00-353613-00002	Temperature Control Board (WKGD, WKGDGX) .....	1
7	00-411506-00003	Thermostat (KX Units Built Prior to 02/2001) .....	1
8	SC-114-82	Mach. Screw 4-40 x 5/16 Rd. Hd. (Use With Item 6) .....	2
9	WS-024-20	Washer (Use With Item 6) .....	2
10	SC-114-83	Mach. Screw 6-32 x 1/4 Slotted Pan Hd. (Use With Item 7) .....	2
11	00-411242-00001	Knob .....	1
12	00-411690-00003	Timer (120 V.) (60 Hz.) (5 Hr.) .....	1
13	00-411690-00004	Timer (240 V.) (60 Hz.) (5 Hr.) .....	1
14	00-411690-00006	Timer (240 V.) (50 Hz.) (5 Hr.) .....	1
15	00-411242-00001	Knob .....	1
16	00-411690-00001	Timer (120 V.) (1 Hr.) .....	1
17	00-411690-00002	Timer (240 V.) (60 Hz.) (1 Hr.) .....	1
18	00-411690-00003	Timer (120 V.) (60 Hz.) (5 Hr.) .....	1
19	00-411690-00004	Timer (240 V.) (60 Hz.) (5 Hr.) .....	1
20	00-411690-00005	Timer (240 V.) (50 Hz.) (1 Hr.) .....	1
21	00-411690-00006	Timer (240 V.) (50 Hz.) (5 Hr.) .....	1
22	00-340324-00009	Switch (D.P.D.T.) .....	2
23	00-424213-00001	Overlay – Panel (1 Hr.) (WKGD, WKGDGX) (W/Roast & Hold) (Prior to March 15, 2005) .....	1
	00-497289-00001	Overlay – Panel (1 Hr.) (WKGD, WKGDGX) (W/Roast & Hold) .....	1
24	00-424249-00001	Overlay – Panel (5 Hr.) (WKGD, WKGDGX) (W/Roast & Hold) (Prior to March 15, 2005) .....	1
	00-497291-00001	Overlay – Panel (5 Hr.) (WKGD, WKGDGX) (W/Roast & Hold) .....	1
25	00-424204-00001	Overlay – Panel (1 Hr.) (WKGD, WKGDGX) (W/O Roast & Hold) (Prior to March 15, 2005) .....	1
	00-497283-00001	Overlay – Panel (1 Hr.) (WKGD, WKGDGX) (W/O Roast & Hold) ) .....	1
26	00-424240-00001	Overlay – Panel (5 Hr.) (WKGD, WKGDGX) (W/O Roast & Hold) (Prior to March 15, 2005) .....	1
	00-497290-00001	Overlay – Panel (5 Hr.) (WKGD, WKGDGX) (W/O Roast & Hold) .....	1
27	00-424203-00001	Overlay – Panel (1 Hr.) (WKG, WKGX) (W/O Roast & Hold) .....	1
28	00-424241-00001	Overlay – Panel (5 Hr.) (WKG, WKGX) (KX Unit W/O Roast & Hold) .....	1
29	00-424214-00001	Overlay – Panel (1 Hr.) (WKG, WKGX) (W/Roast & Hold) .....	1
30	00-424248-00001	Overlay – Panel (5 Hr.) (WKG, WKGX) (W/Roast & Hold) .....	1
31	00-499296-000G1	Panel – Control Weldment .....	1
32	00-411499-00003	Buzzer (230 V.) .....	1
33	00-411499-00004	Buzzer (115 V.) .....	1
34	NS-044-05	Nut Assy. 6-32 Hex KEPS .....	7
35	00-424846-00001	Controller (Watlow #734) .....	1
36	00-354575-00004	Light – Indicator .....	1
37	00-423918-00001	Beeper – Electronic .....	1
38	00-358628-00002	Switch – Rocker (2 Position) .....	1
39	00-358628-00001	Switch – Rocker (3 Position) .....	1
40	00-424844-00001	Overlay – Panel (WKGC, WKG CX) (Prior to March 15, 2005) .....	1
	00-497293-00001	Overlay – Panel (WKGC, WKG CX) .....	1
41	00-499301-000G1	Panel – Control Weldment .....	1



PL-55988-A1

**OVEN PANELS**



**RH CAVITY SIDE**

## OVEN PANELS

ILLUS.	PART NO.	NAME OF PART	AMT.
	PL-55988-A1		
1	00-424141-00002	Top (SST) (WKG, WKGD, WKGK) .....	1
2	00-424229-00002	Top (SST) (WKGX, WKGDX, WKGKX) .....	1
	00-424141-00003	Top (Aluminized) (WLGO) .....	1
3	00-421799-00001	Top – Front .....	1
	00-957607-00001	Top – Front (WLGO) .....	1
4	00-353484-00001	Plate – Retainer .....	2
5	SC-053-46	Mach. Screw 1/4-20 x 3/4 Truss Hd. (SST) .....	4
6	NS-038-08	Lock Nut 1/4-20 x 1 Hex .....	4
7	00-347080-00002	Bearing – Door Shaft .....	2
8	00-353482-00001	Spacer .....	2
9	00-353483-00001	Plate – Upper Door Bearing .....	2
10	00-499302-00001	<b>Panel – Outer (SST) (LH) (WKG, WKGD, WKGK) (New Style) .....</b>	1
	00-499302-00002	Panel – Outer (Aluminized) (LH) (WLGO) .....	1
	00-424142-00002	Panel – Outer (SST) (LH) (WKG, WKGD, WKGK) (Old Style) .....	1
11	00-499303-00001	<b>Panel – Outer (SST) (LH) (WKGX, WKGDX, WKGKX) (New Style) .....</b>	1
	00-424230-00002	Panel – Outer (SST) (LH) (WKGX, WKGDX, WKGKX) (Old Style) .....	1
12	00-423842-000G1	Seals – Vertical Door (LH & RH) .....	1
13	00-342141-00001	Rack – Support (LH) (WKG, WKGD, WKGK) .....	1
14	00-342141-00002	Rack – Support (RH) (WKG, WKGD, WKGK) .....	1
15	00-424833-00001	Rack – Support (LH) (WKGX, WKGDX, WKGKX) (Prior to Nov. 20, 2002) .....	1
	00-428104-00003	Rack – Support (LH) (WKGX, WKGDX, WKGKX) .....	1
16	00-424833-00002	Rack – Support (RH) (WKGX, WKGDX, WKGKX) (Prior to Nov. 20, 2002) .....	1
	00-428104-00004	Rack – Support (RH) (WKGX, WKGDX, WKGKX) .....	1
17	00-499261-00002	<b>Trim – Bottom (W/O Access Door) (New Style) .....</b>	1
	00-957608-00001	Trim – Bottom (W/O Access Door) (WLGO) .....	1
	00-421797-00002	Trim – Bottom (Old Style) .....	1
	00-423766-000G1	Trim – Bottom (Prior to March 2007) (Incls. Items 19 & 20) .....	1
18	00-423758-00001	Access Door (Old Style) .....	1
19	00-425199-00001	Fastener – Nylon (Push-In) .....	2
20	00-424865-00001	Cover – Trim .....	1
21	00-357507-00001	Seal – Horizontal Door .....	2
22	SC-115-51	Mach. Screw 10-32 x 1/2 Phil. Truss Hd. .....	2
23	00-497585-00001	<b>Strike Plate (New Style) (Mounted on Upper “C” Channel) .....</b>	2
	00-347545-00001	Roller Ball – Door Catch (Old Style) .....	1
	00-423847-00001	Strike Plate (Old Style) (Mounted on Doors) .....	1
24	00-423848-00001	Shim – Door Strike (Old Style) .....	AR
25	NS-038-03	Lock Nut – SP 10-32 .....	2
26	00-499278-00001	<b>Probe Guard (New) .....</b>	1
27	SD-032-07	Screw, 10-24 x 1/2 Hex Hd. .....	2
	00-423014-000G1	Roller Ball Door Catch Kit (Old Style) .....	1
	00-357919-00001	Door Seal Kit (Includes Items 12 & 21) .....	1

**RECOMMENDED SPARE PARTS**

PART NO.	NAME OF PART	AMT.
00-353589-00001	Thermocouple D-Models .....	1
00-920883-00003	Thermocouple C-Models .....	1
00-410841-00018	Combo Valve (Nat. Gas) (Robertshaw) .....	1
00-410841-00019	Combo Valve (LP Gas) (Robertshaw) .....	1
00-497269-00001	Combo Valve (Nat. Gas) (White Rogers) .....	1
00-497269-00002	Combo Valve (LP Gas) (White Rogers) .....	1
00-424940-00001	Cooling Fan (120V) .....	1
00-424940-00002	Cooling Fan (240V) .....	1
00-424137-00002	Spark Ignition Control .....	1
00-423813-00003	Ignition Wire "High Voltage" .....	1
00-346357-00001	High Limit (550 Degree) .....	1
00-416535-00006	Heat Relay D-Model (120V) .....	1
00-416535-00007	Heat Relay D-Model (208/240V) .....	1
00-411496-000F1	Door Switch .....	1
00-421758-000G1	Transformer (120V/24V) .....	1
00-421758-000G2	Transformer (240V/24V) .....	1
00-411690-00001	1-Hour Timer (120V) .....	1
00-411690-00002	1-Hour Timer (240V) .....	1
00-411242-00001	Knob .....	1
00-411506-00003	Thermostat (KX) .....	1
00-353613-00002	Solid State Temperature Control D-Model .....	1
00-424846-00001	Watlow Computer Control C-Model .....	1
<b>00-497585-00001</b>	<b>Strike Plate (New Style) (Mounted on "C" Channel) .....</b>	<b>1</b>
00-423847-00001	Door Strike (Old Style) (Mounted on Doors) .....	1
<b>00-497586-00001</b>	<b>Roller Latch (New Style) ( Mounted on Doors) .....</b>	<b>1</b>
00-347545-00001	Roller Ball Door Latch (Old Style) (Mounted to "C" Channel) .....	1
00-423014-000G1	Door Roller Kit (Old Style) .....	1
00-424194-00001	Ignitor/Sensor .....	1
00-340324-00008	ON/OFF Toggle Master Switch .....	1
00-357036-00001	Lamp Assy. ....	1
00-340324-00009	Toggle Switch .....	1

**NOTES**

**NOTES**