

# **VULCAN**

## *CATALOG OF REPLACEMENT PARTS*

### *VF2 SERIES ELECTRIC FRYERS*

*MODEL*

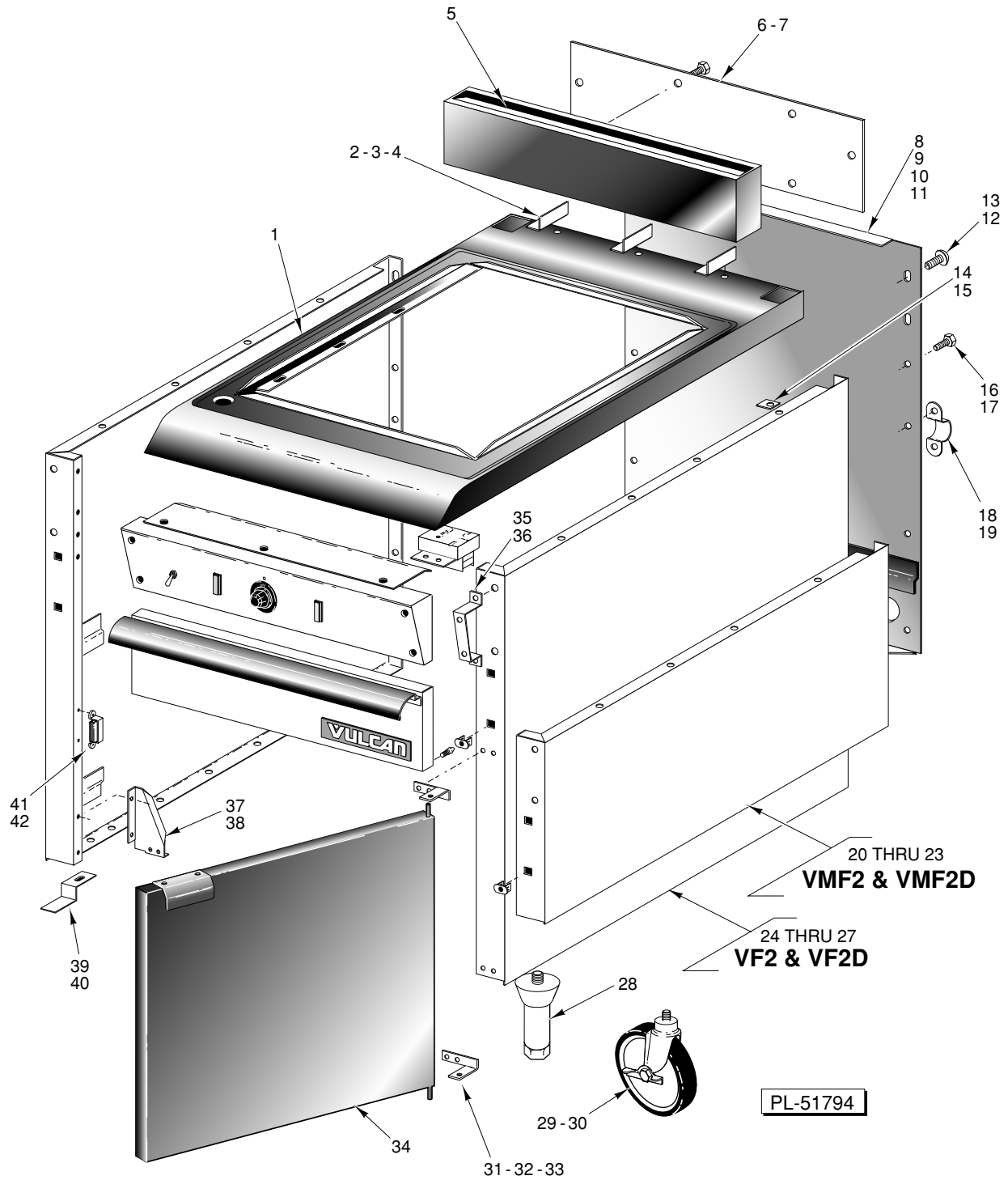
<i>VF2</i>	<i>ML-52915</i>
<i>VMF2</i>	<i>ML-52916</i>
<i>VF2D</i>	<i>ML-52542</i>
<i>VMF2D</i>	<i>ML-52543</i>





### Table of Contents

<b>Page</b>	<b>Description</b>
5	Panels & Doors
7	Control Panels
9	Electric Heat Elements
11	Electrical Components
12	Accessories

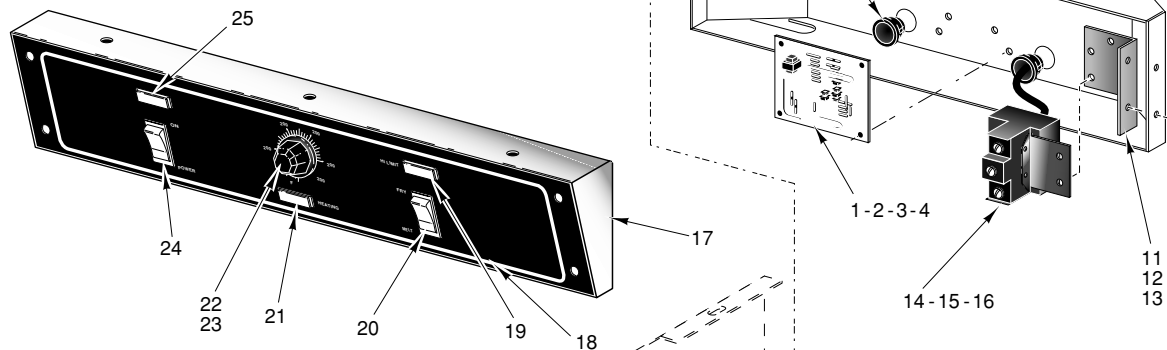


PANELS & DOORS

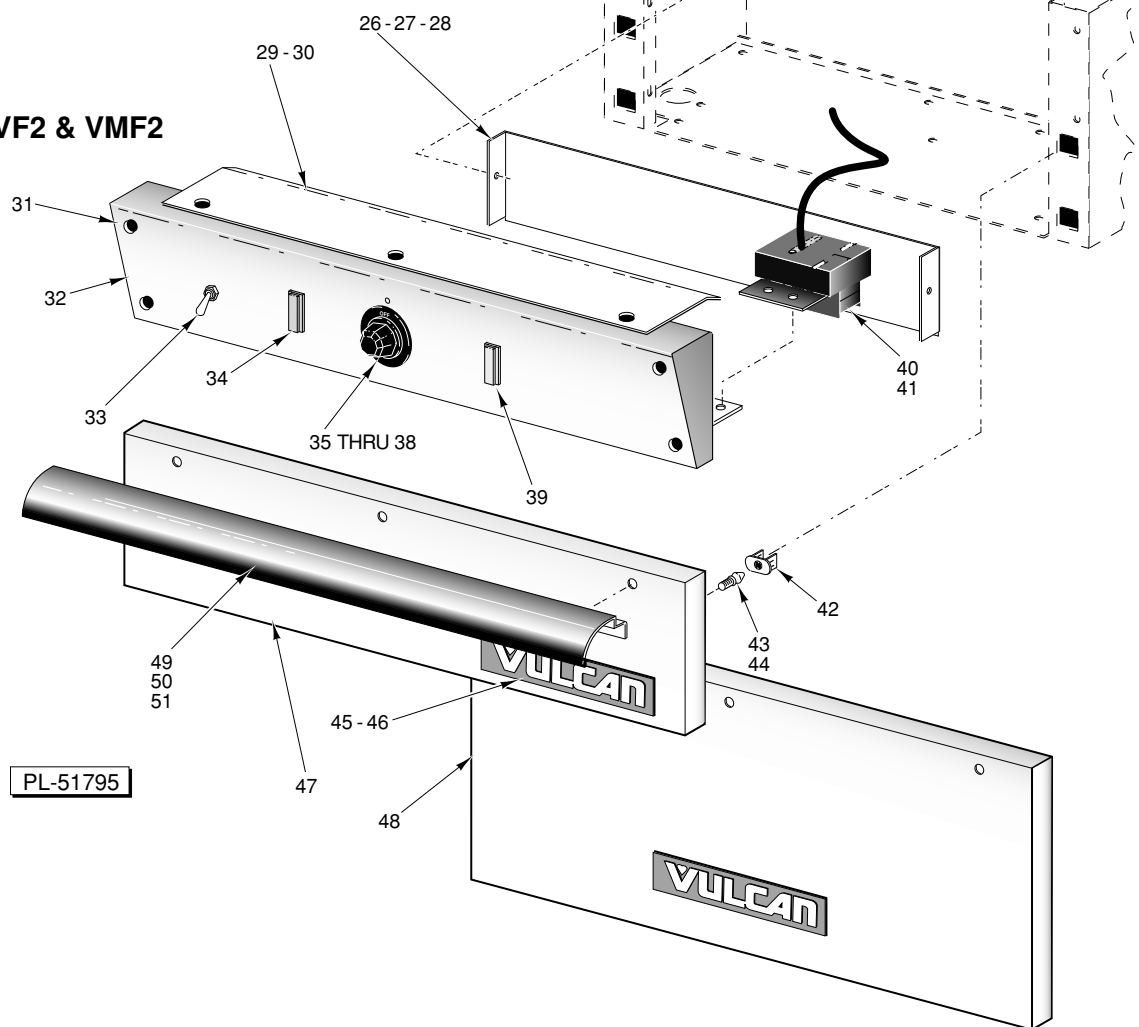
## PANELS & DOORS

ILLUS. PL-51794	PART NO.	NAME OF PART	AMT.
1	410184-G2	Top - Main Assy. ....	1
2	411383-1	Support - Back Splash .....	3
3	SD-32-7	Self-Tapping Screw 10-24 x ½ Hex Washer Hd., Type TT .....	3
4	NS-44-9	Nut Assy 10-24 Hex "KEPS" .....	3
5	411319-G2	Backsplash .....	1
6	411382-4	Back - Backsplash (SST) .....	1
7	SD-32-7	Self-Tapping Screw 10-24 x ½ Hex Washer Hd., Type TT .....	6
8	420420-20G1	Back - Body (VF2 & VF2D) .....	1
9	420420-22G1	Back - Body (SST) (VF2 & VF2D) .....	1
10	420515-1	Back - Body (VMF2 & VMF2D) .....	1
11	420515-2	Back - Body (SST) (VMF2 & VMF2D) .....	1
12	SC-10-51	Mach. Screw ¼-20 x ½ Truss Hd. ....	4
13	NS-46-52	Nut - ¼-20 Hex "Keps" .....	4
14	403841-7	Speed Nut .....	8
15	SD-32-7	Self-Tapping Screw 10-24 x ½ Hex Washer Hd., Type TT .....	8
16	SD-32-7	Self-Tapping Screw 10-24 x ½ Hex Washer Hd., Type TT .....	9
17	NS-44-9	Nut Assy 10-24 Hex "KEPS" .....	9
18	417063-1	Strap - Tie Down .....	1
19	SD-32-7	Self-Tapping Screw 10-24 x ½ Hex Washer Hd., Type TT .....	2
20	420520-1	Side - Body (Ptd. - R.H.) .....	1
21	420520-3	Side - Body (SST - R.H.) .....	1
22	420520-2	Side - Body (Ptd. - L.H.) .....	1
23	420520-4	Side - Body (SST - L.H.) .....	1
24	420410-20G1	Side - Body (Ptd. - R.H.) .....	1
25	420410-22G1	Side - Body (SST - R.H.) .....	1
26	420416-20G1	Side - Body (Ptd. - L.H.) .....	1
27	420416-22G1	Side - Body (SST - L.H.) .....	1
28	409840-6	Leg (SST) .....	4
29	410118-2	Caster W/Brake .....	2
30	410118-1	Caster W/O Brake .....	2
31	412779-4	Bracket - Door Hinge (Lower) .....	1
32	412779-3	Bracket - Door Hinge (Upper) .....	1
33	SD-32-7	Self-Tapping Screw 10-24 x ½ Hex Washer Hd., Type TT .....	4
34	421480-G2	Door Assy. ....	1
35	420428-20G1	Support - Switch Panel .....	2
36	SD-32-7	Self-Tapping Screw 10-24 x ½ Hex Washer Hd., Type TT .....	4
37	409037-2	Brace - L.H. ....	1
38	409037-1	Brace - R.H. ....	1
39	408347-4	Clip - Retainer (VMF2 & VMF2D) .....	4
40	SD-37-2	Self-Tapping Screw 10-16 x ½ Hex Washer Hd., Type AB .....	4
41	408834-1	Magnet - Door .....	1
42	SD-35-2	Self-Tapping Screw 8-18 x ¾ Hex Washer Hd., Type AB .....	2

**VF2D & VMF2D**



**VF2 & VMF2**

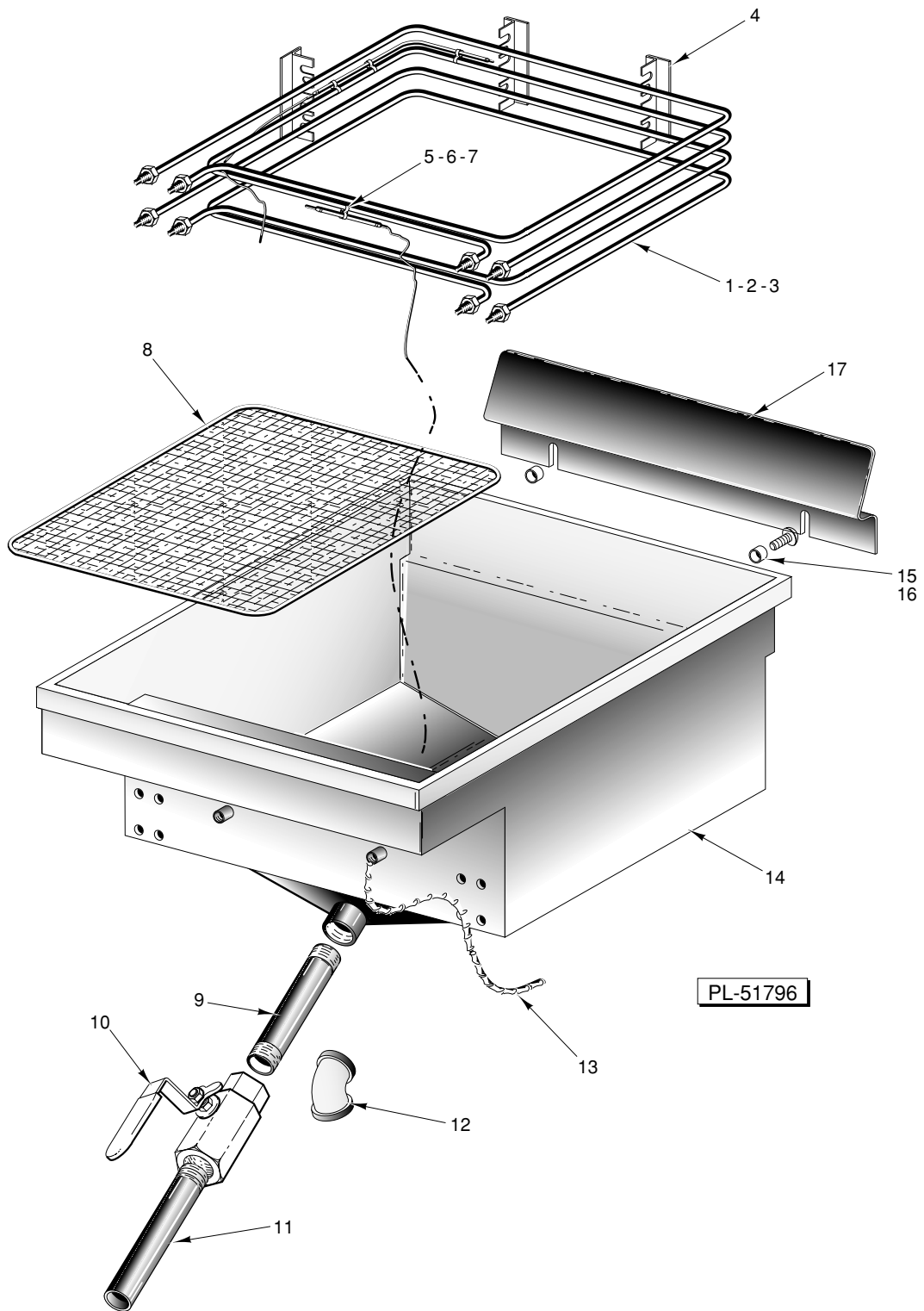


PL-51795

**CONTROL PANELS**

## CONTROL PANELS

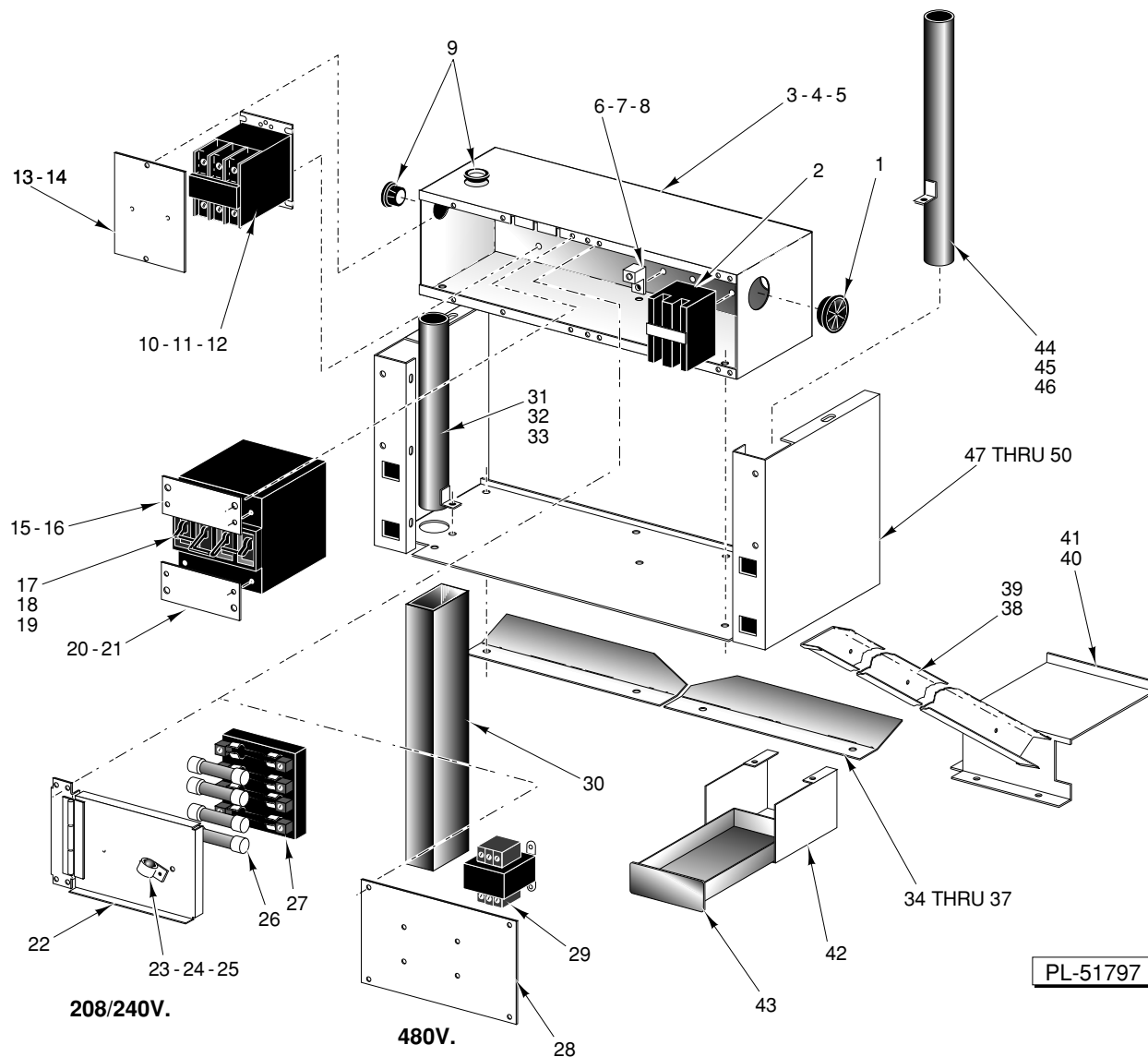
ILLUS. PL-51795	PART NO.	NAME OF PART	AMT.
1	415144-12	Board - Temperature .....	1
2	SC-119-90	Mach. Screw 6-32 x 1 Pan Hd. ....	4
3	WL-4-40	Lockwasher 10 Medium .....	4
4	NS-9-7	Mach. Nut 6-32 Hex .....	4
5	FE-23-56	Bushing - Electrical Snap .....	2
6	421710-1	Control Housing .....	1
7	421723-1	Insulation .....	1
8	544437	Adhesive Spray .....	AR
9	414567-G1	Probe - Thermistor .....	1
10	FP-26-9	Bushing - Pipe 3/8 to 1/4 .....	1
11	421726-1	Bracket - Hi limit .....	1
12	SD-32-7	Self-Tapping Screw 10-24 x 1/2 Hex Washer Hd., Type TT .....	3
13	NS-44-9	Nut Assy 10-24 Hex "KEPS" .....	1
14	419670-2	Thermostat-Hi-Limit (W/Stuff Box) .....	1
15	SD-32-7	Self-Tapping Screw 10-24 x 1/2 Hex Washer Hd., Type TT .....	2
16	542676	Spiral Wrap .....	AR
17	421655-1	Switch Panel .....	1
18	421656-1	Overlay - Switch Panel (Red) .....	1
19	411496-E8	Light - Indicator (Red) .....	1
20	411496-B1	Switch - Rocker (Fry/Melt) .....	1
21	411496-E9	Light - Indicator (Amber) .....	1
22	414254-1	Knob - Thermostat .....	1
23	415638-G1	Potentiometer .....	1
24	411496-B1	Switch - Rocker (Power) .....	1
25	411496-E8	Light - Indicator (Red) .....	1
26	420524-1	Bracket - Reinforcing (VF2 & VMF2) .....	1
27	SD-32-7	Self-Tapping Screw 10-24 x 1/2 Hex Washer Hd., Type TT .....	2
28	NS-44-9	Nut Assy 10-24 Hex "KEPS" .....	2
29	416776-2	Cover - Switch Panel .....	1
30	SD-32-7	Self-Tapping Screw 10-24 x 1/2 Hex Washer Hd., Type TT .....	3
31	SD-32-7	Self-Tapping Screw 10-24 x 1/2 Hex Washer Hd., Type TT .....	4
32	420528-G1	Switch Panel .....	1
33	417812-1	Toggle Switch .....	1
34	411496-E4	Light - Indicator (Red) .....	1
35	421722-1	Knob - Thermostat .....	1
36	415119-6	Bezel .....	1
37	414879-1	Thermostat .....	1
38	542676	Spiral Wrap .....	AR
39	411496-E3	Indicator Light (Amber) .....	1
40	419670-2	Thermostat-Hi-Limit (W/Stuff Box) .....	1
41	SD-32-7	Self-Tapping Screw 10-24 x 1/2 Hex Washer Hd., Type TT .....	2
42	417529-1	Catch - Spring (Female) .....	4
43	410258-1	Strike - Door .....	4
44	NS-44-7	Nut Assy 8-32 Keps Hex .....	4
45	417700-2	Name Plate .....	1
46	NS-47-79	Palnut 3/16 .....	2
47	420426-20	Panel - Upper (VF2 & VF2D) .....	1
48	420525-1	Panel - Upper (VMF2 & VMF2D) .....	1
49	420427-20	Handle - Upper Panel .....	1
50	SD-32-7	Self-Tapping Screw 10-24 x 1/2 Hex Washer Hd., Type TT .....	3
51	NS-44-9	Nut Assy 10-24 Hex "KEPS" .....	3
	421740-G1	Wire Harness (Switch Panel)(VF2D & VMF2D) .....	1
	421740-G2	Wire Harness (Control Housing) (VF2D & VMF2D) .....	1



**ELECTRIC HEAT ELEMENTS**

## ELECTRIC HEAT ELEMENTS

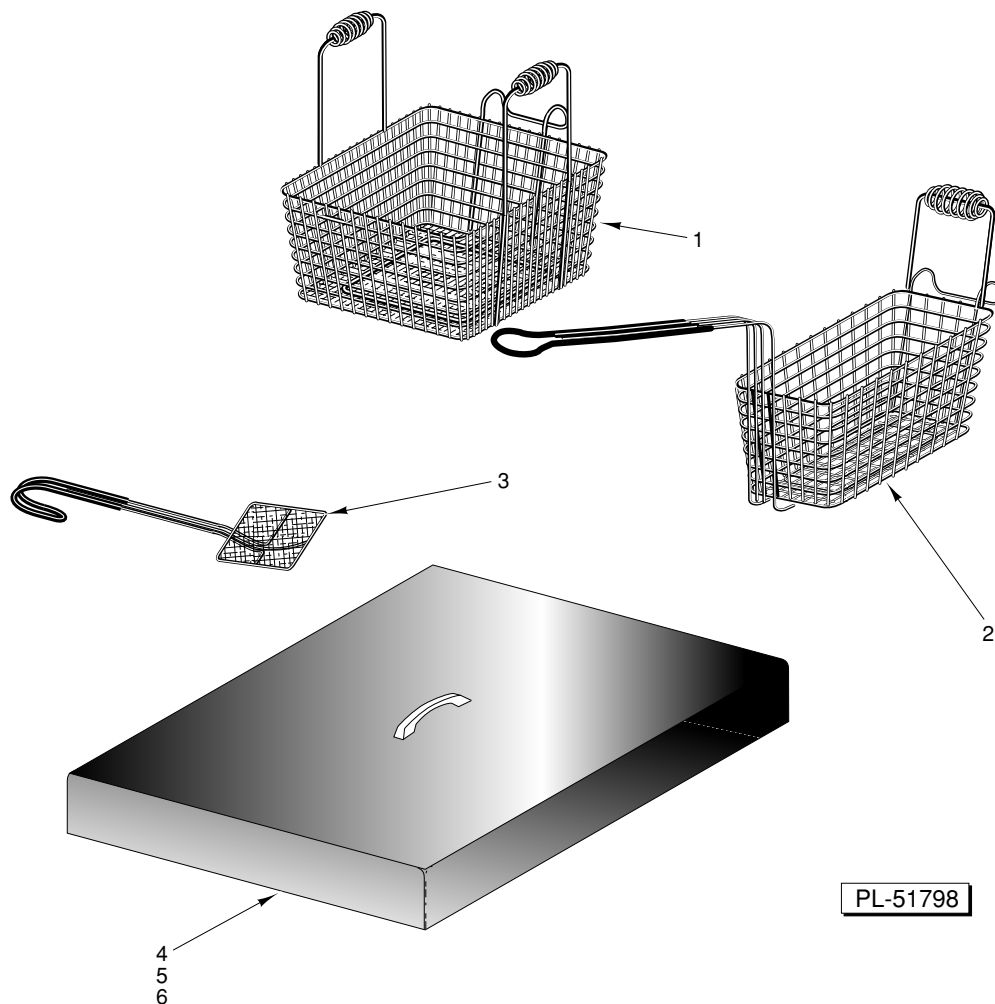
ILLUS. PL-51796	PART NO.	NAME OF PART	AMT.
1	411833-1	Element (208 V.) .....	4
2	411833-2	Element (240 V.) .....	4
3	411833-3	Element (480 V.) .....	4
4	420436-21	Spacer - Element .....	4
5	406666-42	Clamp .....	8
6	SC-109-10	Mach. Screw 6-32 x $\frac{3}{8}$ Pan Hd. ....	4
7	NS-9-7	Mach. Nut 6-32 Hex .....	4
8	410738-2	Screen - Crumb .....	1
9	FP-59-79	Nipple 1 x 7 $\frac{1}{2}$ TBE .....	1
10	414212-3	Valve .....	1
11	FP-85-58	Nipple 1 x 8 STOE .....	1
12	FP-13-25	Elbow - Pipe 1 x 45 Deg. (VMF2 & VMF2D) .....	1
13	542676	Spiral Wrap .....	AR
14	410185-G2	Tank .....	1
15	406987-1	Spacer .....	2
16	SC-10-51	Mach. Screw $\frac{1}{4}$ -20 x $\frac{1}{2}$ Truss Hd. ....	2
17	413111-2	Hanger - Basket .....	1



**ELECTRICAL COMPONENTS**

## ELECTRICAL COMPONENTS

ILLUS. PL-51797	PART NO.	NAME OF PART	AMT.
1	FE-23-53	Bushing - Snap .....	1
2	410472-8	Terminal Block .....	1
3	413824-1	Breaker Cabinet .....	1
4	SD-32-7	Self-Tapping Screw 10-24 x ½ Hex Washer Hd., Type TT .....	4
5	NS-44-9	Nut Assy 10-24 Hex "KEPS" .....	3
6	417856-1	Lug - Grounding (With Set Screw) .....	1
7	WL-4-40	Lockwasher 10 Medium .....	1
8	SD-32-7	Self-Tapping Screw 10-24 x ½ Hex Washer Hd., Type TT .....	1
9	FE-23-56	Bushing - Electrical Snap .....	2
10	411497-D3	Contact (208/240 V.) .....	1
11	411497-C5	Contact 3 Pole (480 V.) .....	1
12	SD-32-7	Self-Tapping Screw 10-24 x ½ Hex Washer Hd., Type TT .....	2
13	413817-1	Closure Plate (L.H.) .....	1
14	SD-32-7	Self-Tapping Screw 10-24 x ½ Hex Washer Hd., Type TT .....	2
15	413816-2	Plate - Top .....	1
16	SD-32-7	Self-Tapping Screw 10-24 x ½ Hex Washer Hd., Type TT .....	2
17	411501-19	Breaker 4 Pole 35A. (208/240V.) .....	1
18	411501-20	Breaker 4 Pole 20A. (480V.) .....	1
19	SC-109-10	Mach. Screw 6-32 x ¾ Pan Hd. ....	4
20	413816-1	Plate - Bottom .....	1
21	SD-32-7	Self-Tapping Screw 10-24 x ½ Hex Washer Hd., Type TT .....	2
22	413819-G1	Fuse Cover Assy (208/240V.) .....	1
23	415978-1	Clamp .....	1
24	SD-32-7	Self-Tapping Screw 10-24 x ½ Hex Washer Hd., Type TT .....	1
25	NS-44-9	Nut Assy 10-24 Hex "KEPS" .....	1
26	FE-12-2	Fuse (250 V./40A)(Use on 208/240 V Machines) .....	4
27	FE-24-39	Holder - Fuse .....	1
28	413815-1	Closure Plate (Right)(480V.) .....	1
29	411500-6	Transformer (480V.) .....	1
30	406027-G3	Grease Collector (VF2 & VF2D) .....	1
31	420430-20G1	Tube - Grease (VF2 & VF2D) .....	1
32	SD-32-7	Self-Tapping Screw 10-24 x ½ Hex Washer Hd., Type TT .....	1
33	NS-44-9	Nut Assy 10-24 Hex "KEPS" .....	1
34	409507-2	Shield R.H. (VF2 & VF2D) .....	1
35	409507-1	Shield L.H. (VF2 & VF2D) .....	1
36	SD-32-7	Self-Tapping Screw 10-24 x ½ Hex Washer Hd., Type TT .....	4
37	NS-44-9	Nut Assy 10-24 Hex "KEPS" .....	4
38	420435-20	Wire Guard (VF2 & VF2D) .....	1
39	SD-32-7	Self-Tapping Screw 10-24 x ½ Hex Washer Hd., Type TT .....	3
40	409038-1	Closure - Wire Duct (VF2 & VF2D) .....	1
41	SD-32-7	Self-Tapping Screw 10-24 x ½ Hex Washer Hd., Type TT .....	4
42	413141-1	Holder - Grease Collector (VMF2 & VMF2D) .....	1
43	413142-G1	Grease Collector (VMF2 & VMF2D) .....	1
44	420526-G1	Tube - Grease Drip (VMF2 & VMF2D) .....	1
45	SD-32-7	Self-Tapping Screw 10-24 x ½ Hex Washer Hd., Type TT .....	1
46	NS-44-9	Nut Assy 10-24 Hex "KEPS" .....	1
47	409668-1	Cabinet - Breaker (VF2 & VF2D) .....	1
48	409668-2	Cabinet - Breaker (VMF2 & VMF2D) .....	1
49	SD-32-7	Self-Tapping Screw 10-24 x ½ Hex Washer Hd., Type TT .....	4
50	NS-44-9	Nut Assy 10-24 Hex "KEPS" .....	4



**ACCESSORIES**

ILLUS. PL-51798	PART NO.	NAME OF PART	AMT.
1	411378-1	Basket - Single .....	1
2	421712-1	Twin Basket .....	2
3	421459-1	Skimmer - Oil .....	1
4	357199-G1	Cover Fry Tank (Incls. Items 5 & 6) .....	1
5	416936-1	Handle - Cover .....	1
6	SC-10-17	Mach. Screw 10-24 x 1/2 Truss Hd. ....	2
	405686-1	Bag - Filter .....	AR