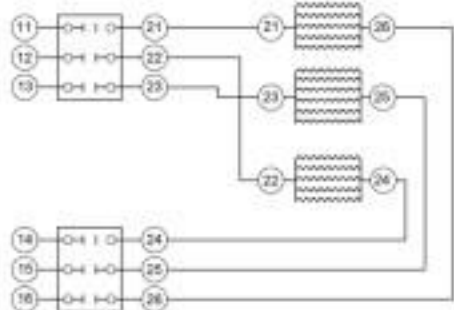


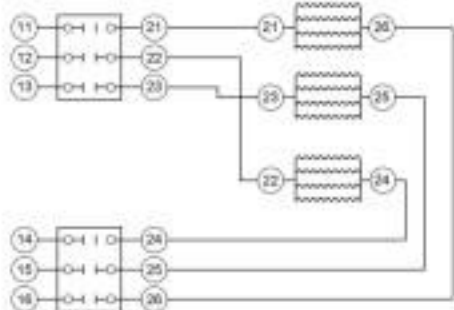
40 GALLON

16 HEATERS (1000W PCR)

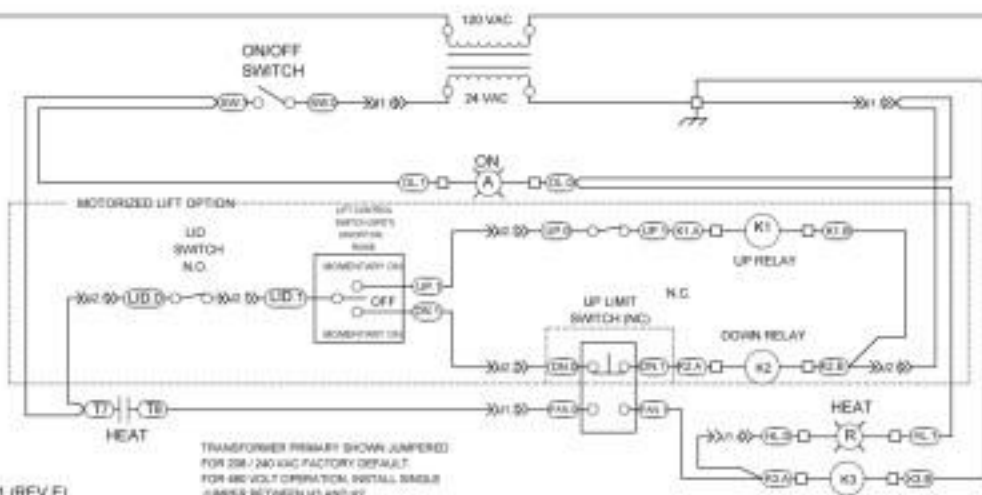
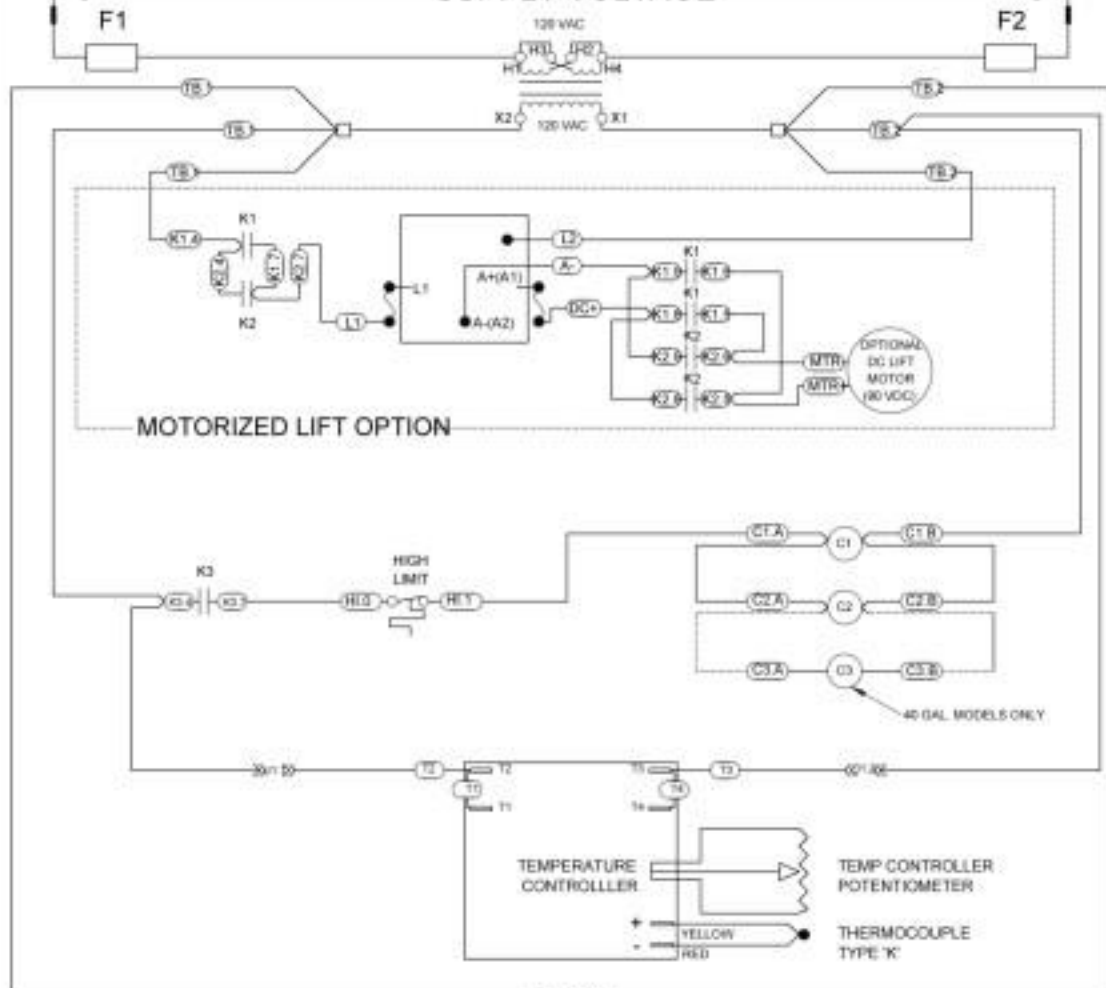


30 GALLON

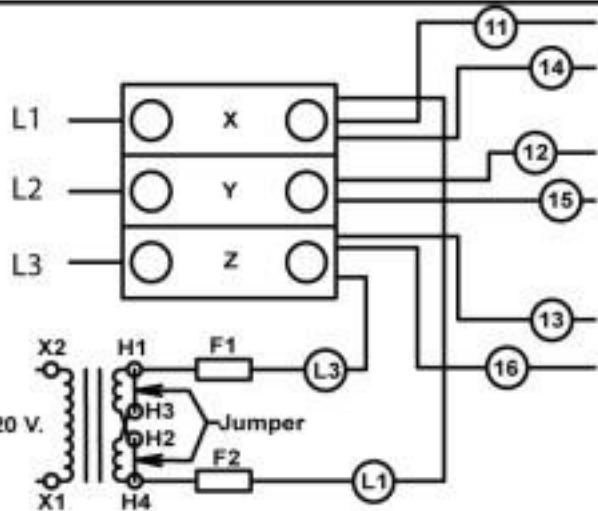
12 HEATERS (1000W PCR)



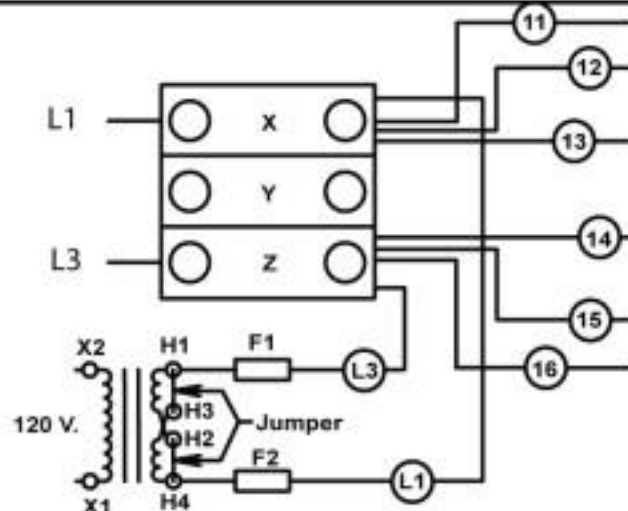
SUPPLY VOLTAGE



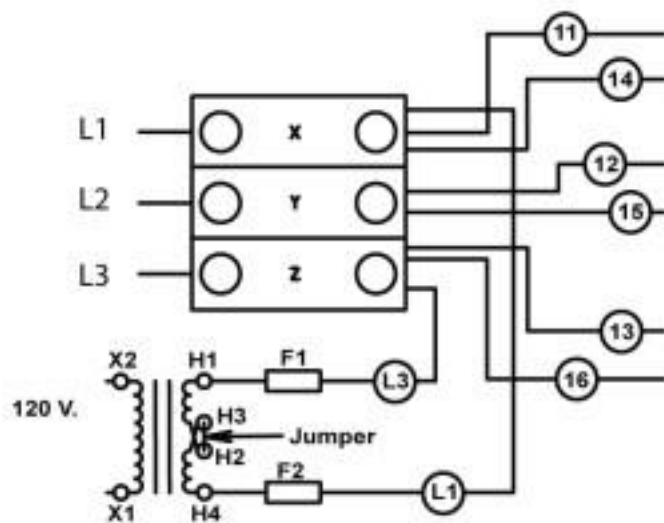
TRANSFORMER PRIMARY SHOWN JUMPED FOR 208 / 240 VAC FACTORY DEFAULT. FOR 480 VOLT OPERATION, INSTALL SINGLE JUMPER BETWEEN H1 AND H2.



**TERMINAL BLOCK WIRING
FOR 208/240 VOLT 3 PHASE OPERATION
(Factory Configuration)**



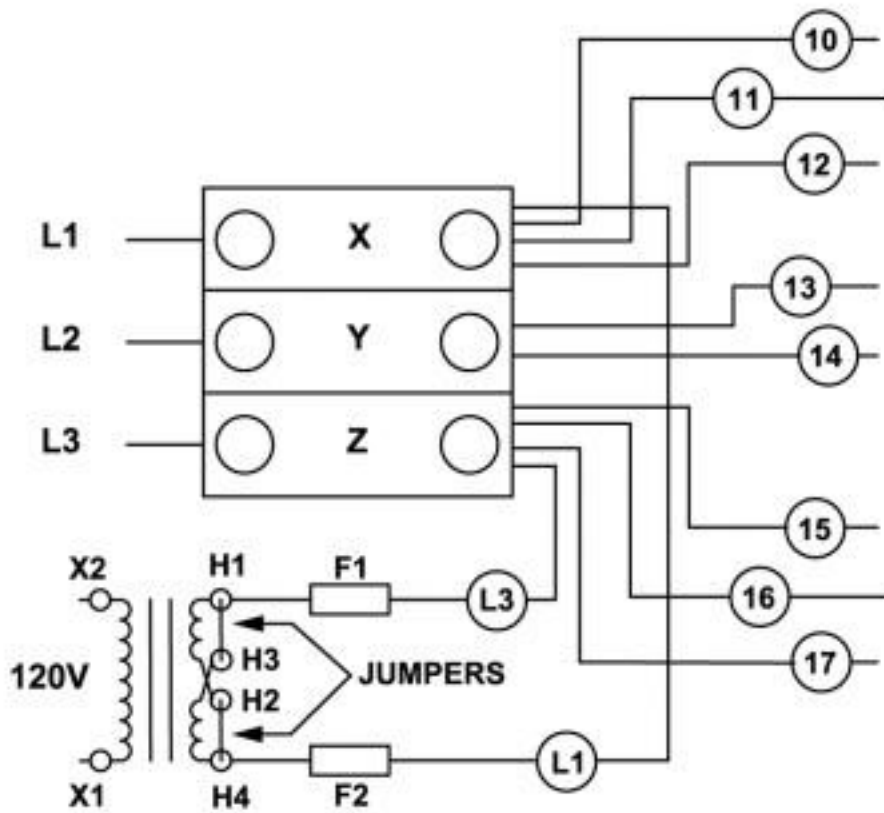
**TERMINAL BLOCK WIRING
FOR 208/240 VOLT 1 PHASE OPERATION
Wires 12 & 13 moved to L1
Wires 14 & 15 moved to L3**



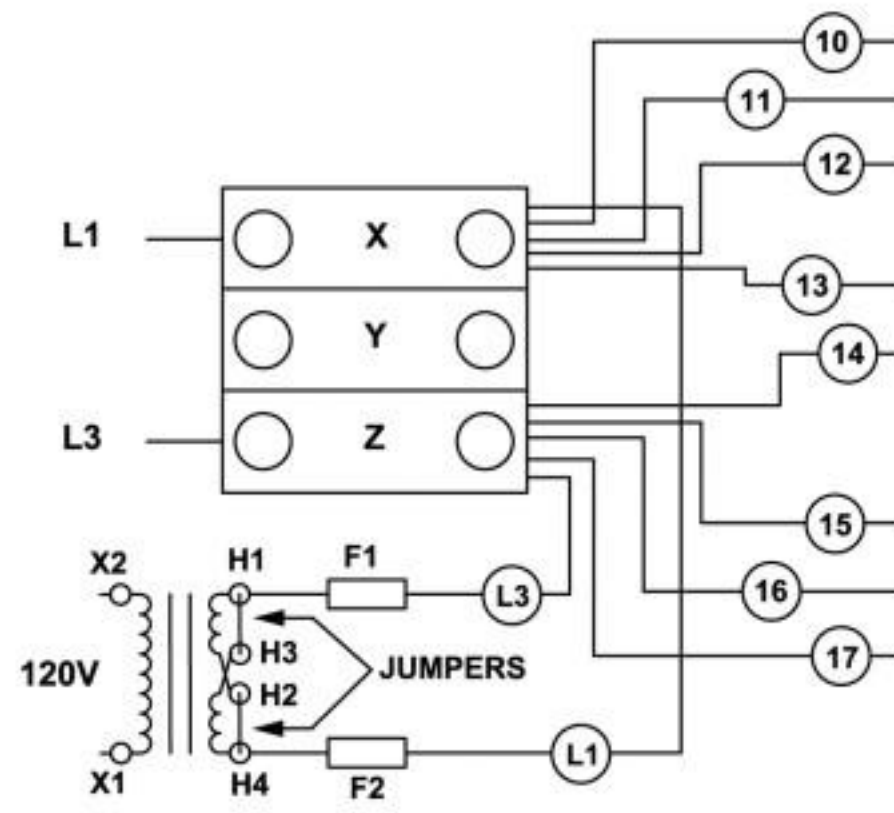
**TERMINAL BLOCK WIRING
FOR 480 VOLT 3 PHASE OPERATION**

**IMPORTANT!!
CHECK DATA PLATE TO DETERMINE
APPLICABLE VOLTAGE CONFIGURATION
FOR THIS UNIT!**

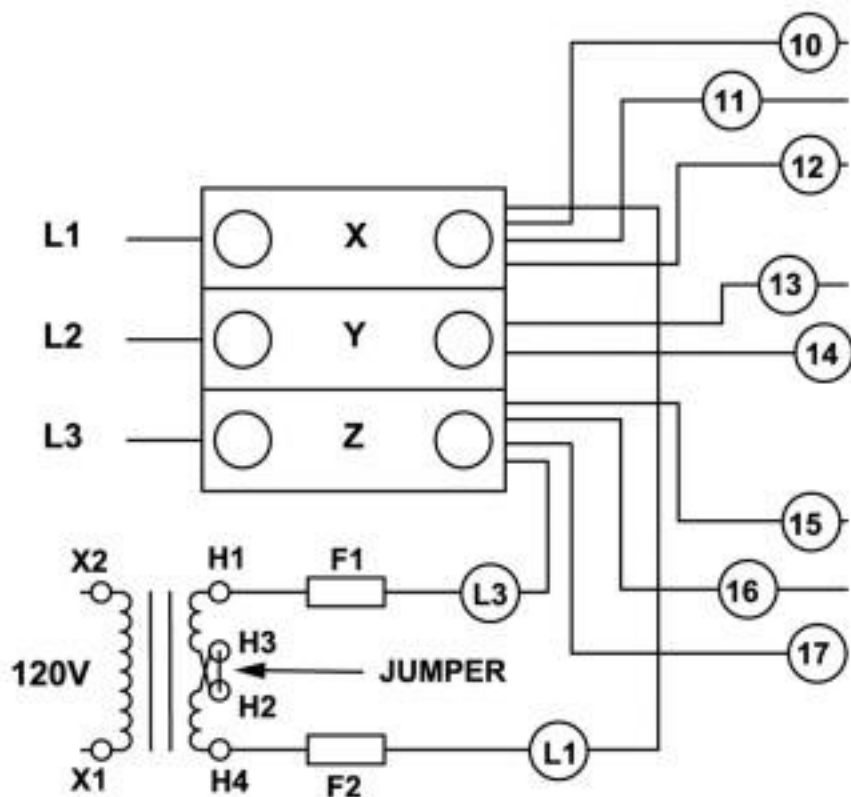
**30 AND 40 GALLON CONFIGURATIONS
SHOWN.**



**208/240 VOLT 3 PHASE CONNECTION
(Factory Default Configuration)**



**208/240 VOLT 1 PHASE CONNECTION
(Wire 13 moved to L1, Wire 14 moved to L3)**



480 VOLT 3 PHASE CONNECTION ONLY

**IMPORTANT!!
CHECK DATA PLATE TO DETERMINE
APPLICABLE
VOLTAGE CONFIGURATION FOR THIS UNIT!**

**40 GALLON CONFIGURATIONS SHOWN.
WIRES 10 AND 17 NOT PRESENT ON
30 GALLON MODELS.**

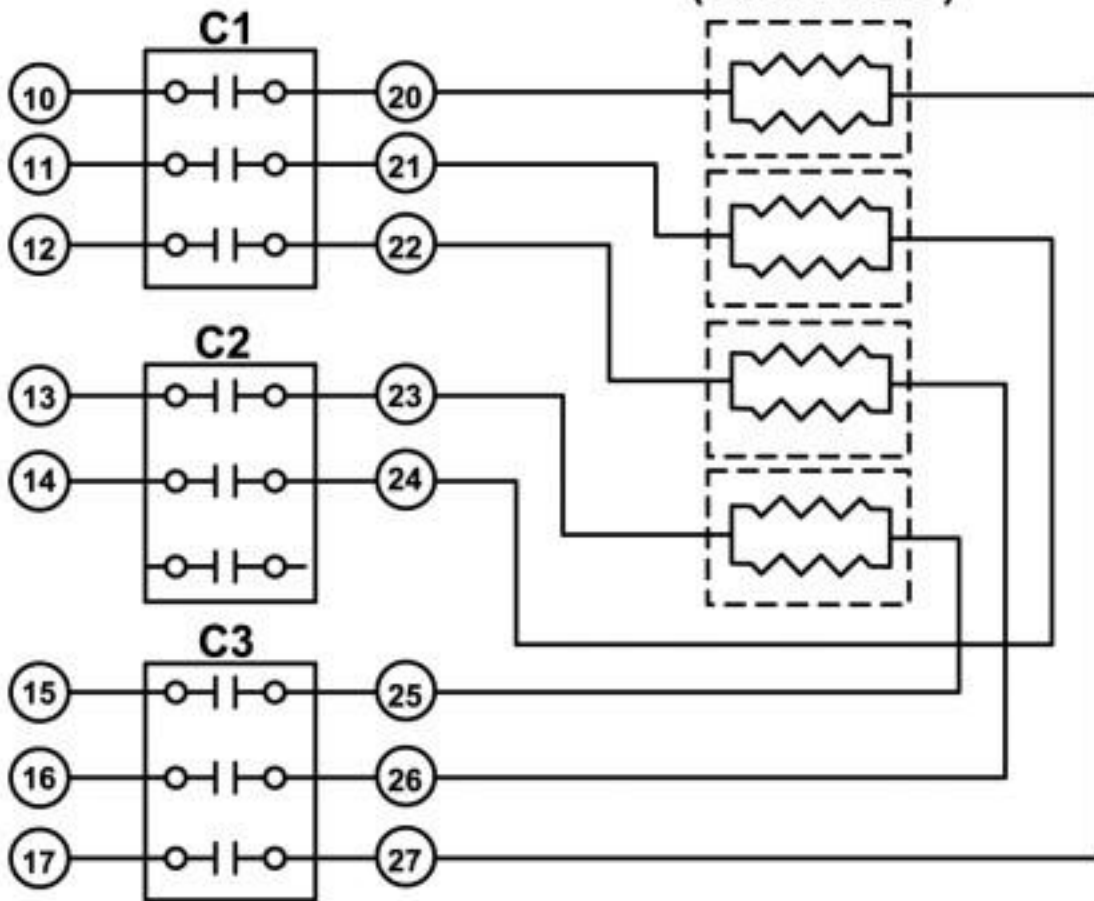
**DERIVED FROM:
854714 REV. B**

**TERMINAL BLOCK WIRING
MODELS VE40/VE30
SINGLE AND THREE PHASE POWER
208/240/480V**

AI1378

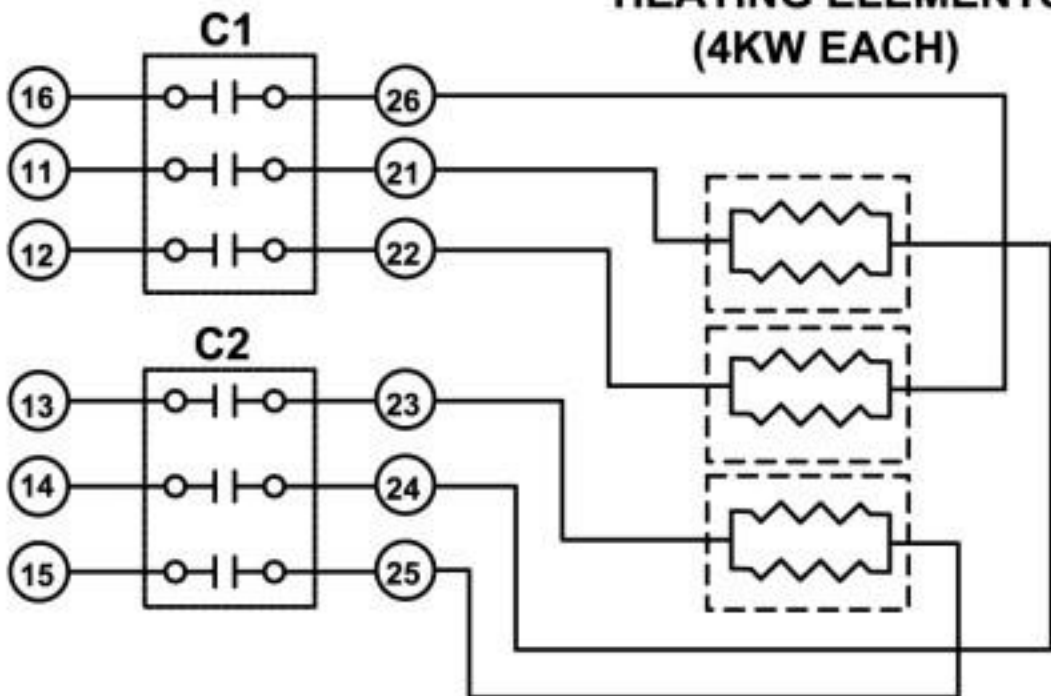
40 GALLON

HEATING ELEMENTS (4KW EACH)

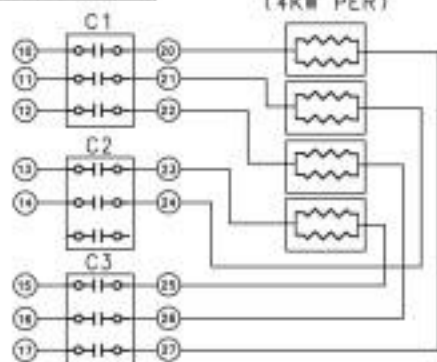


30 GALLON

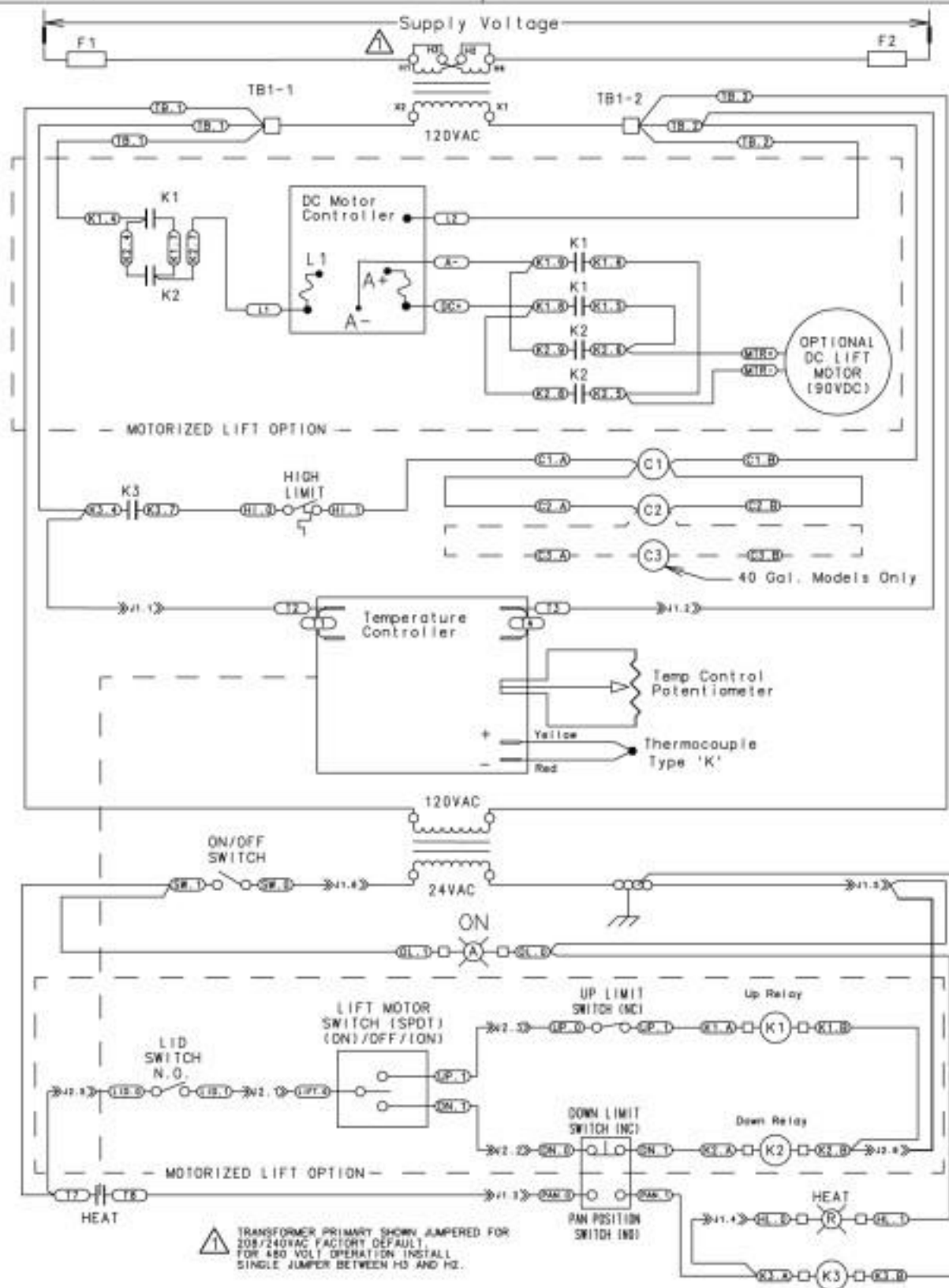
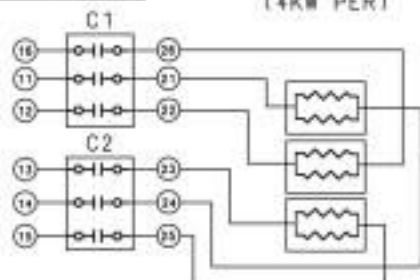
HEATING ELEMENTS (4KW EACH)

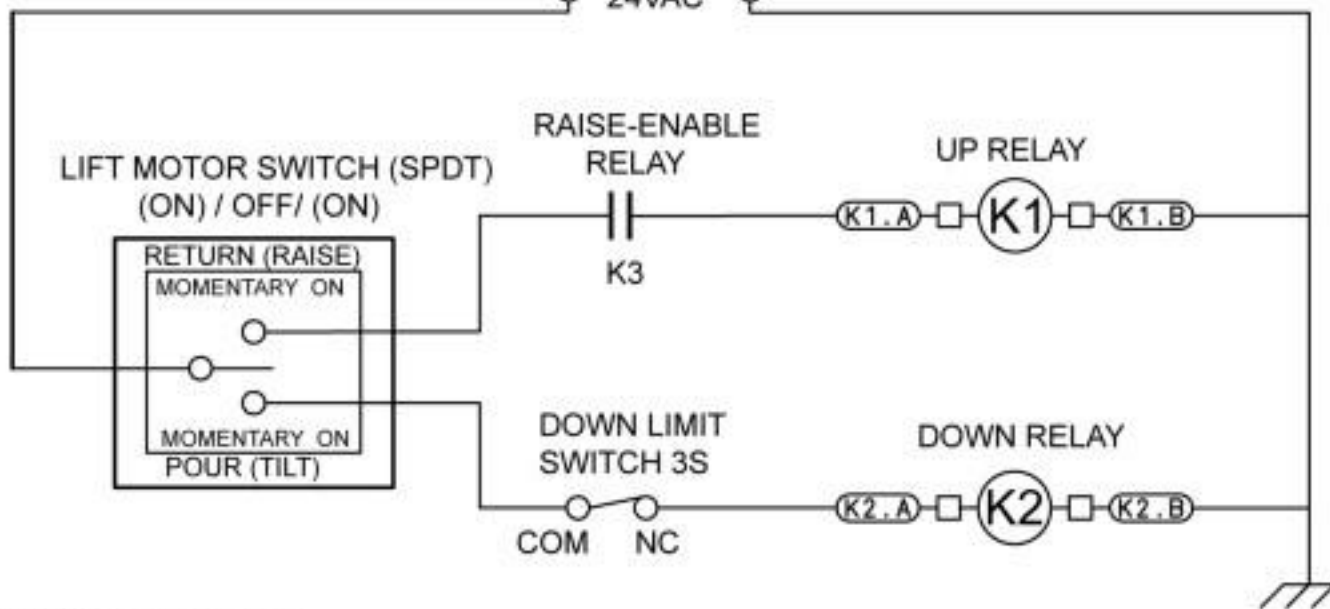
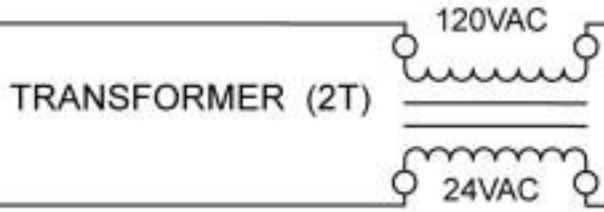
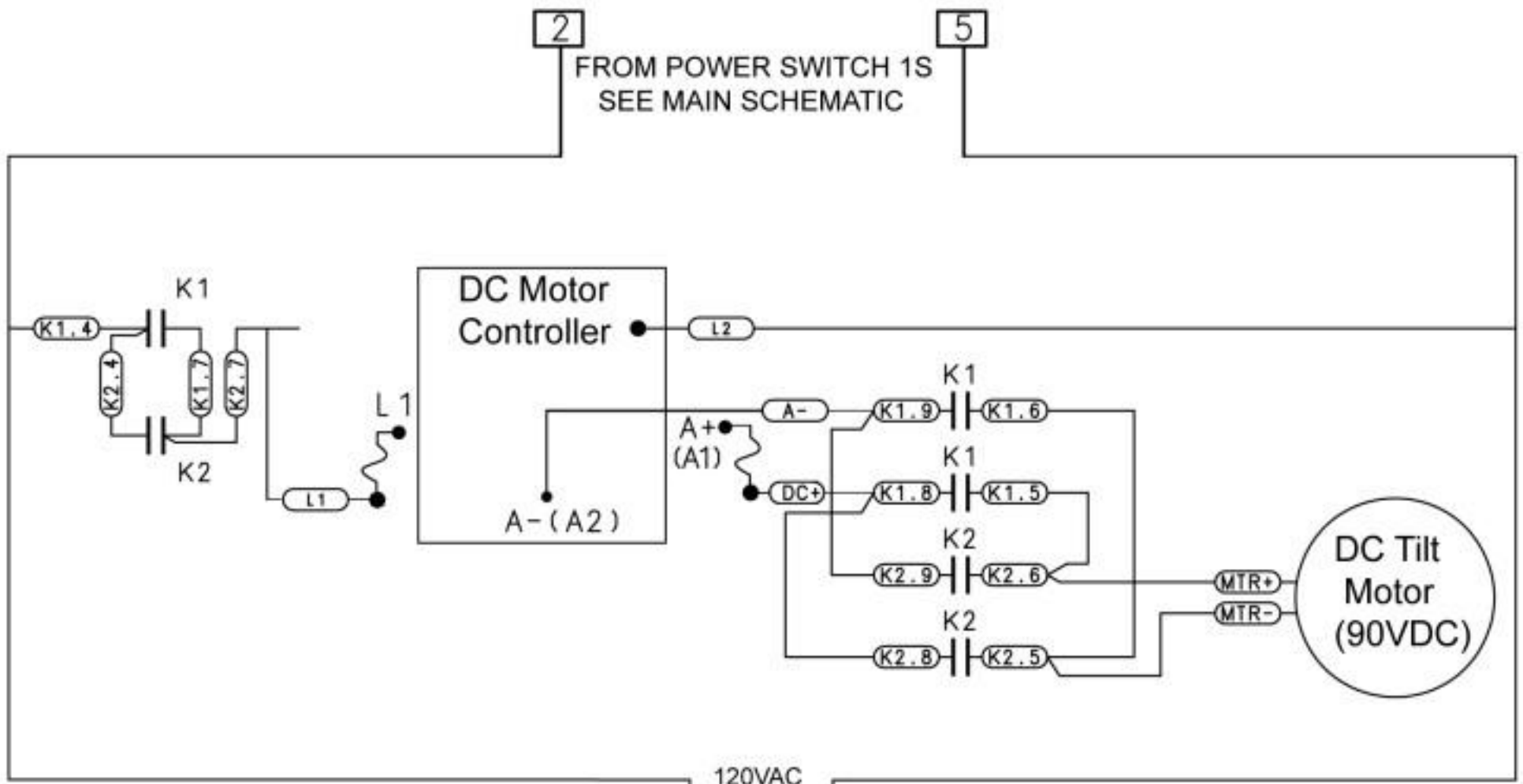


40 GALLON

HEATER
(4KW PER)

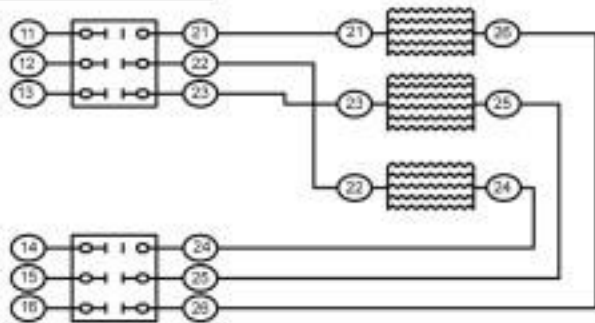
30 GALLON

HEATER
(4KW PER)



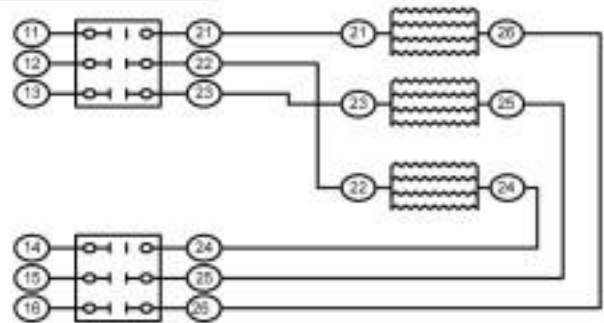
40 GALLON

16 HEATERS (1000W PER)

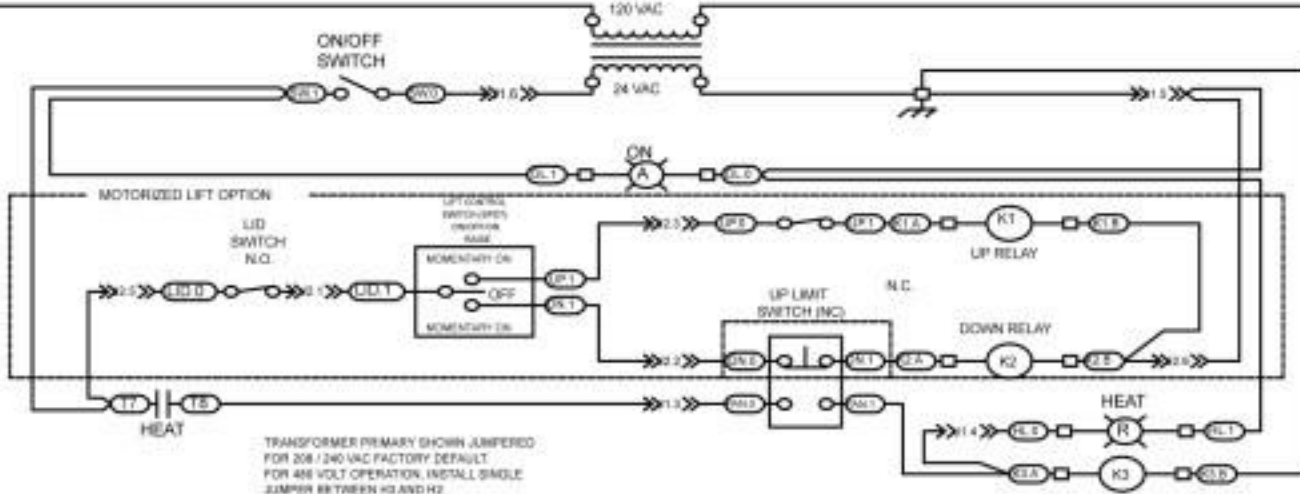
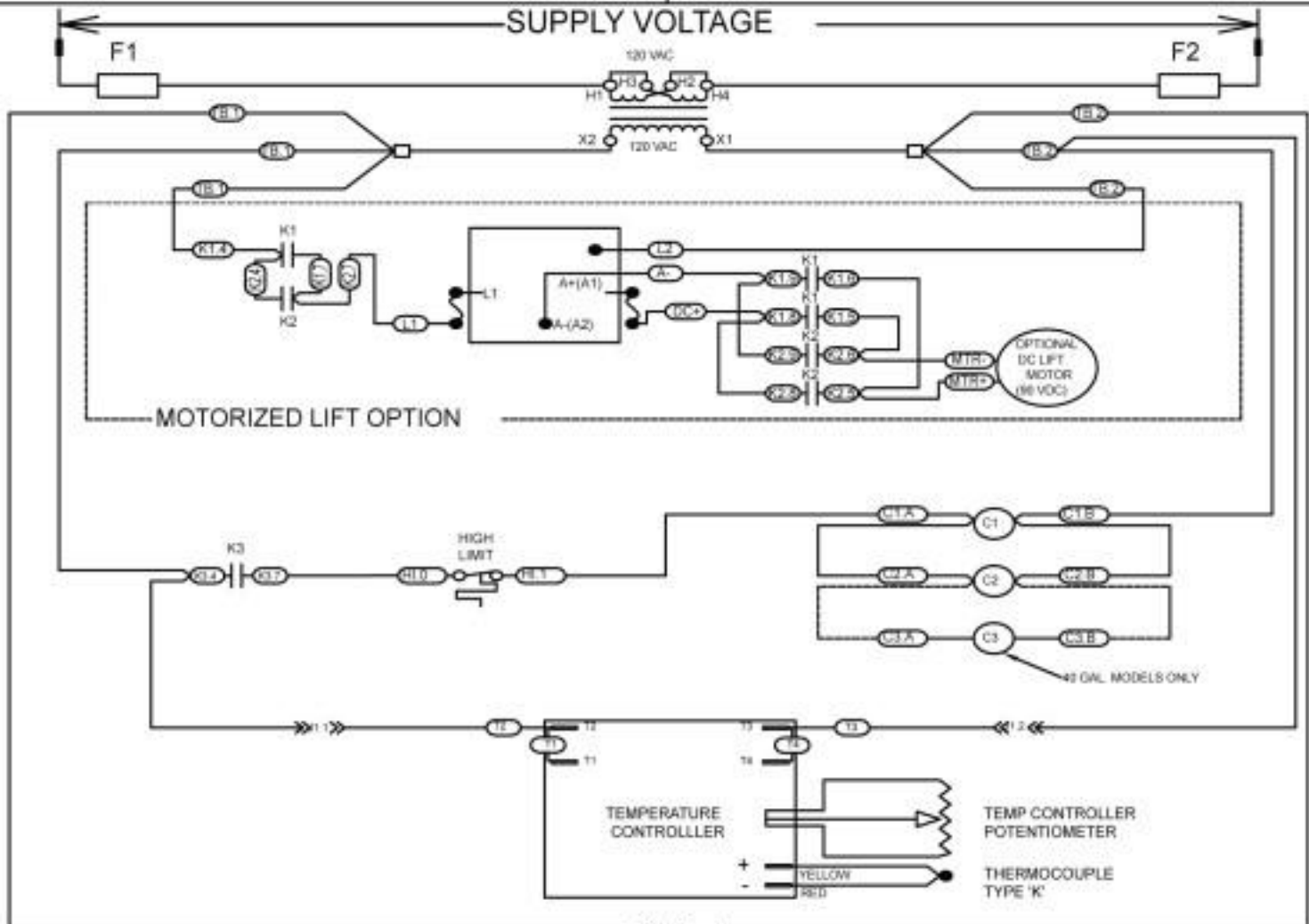


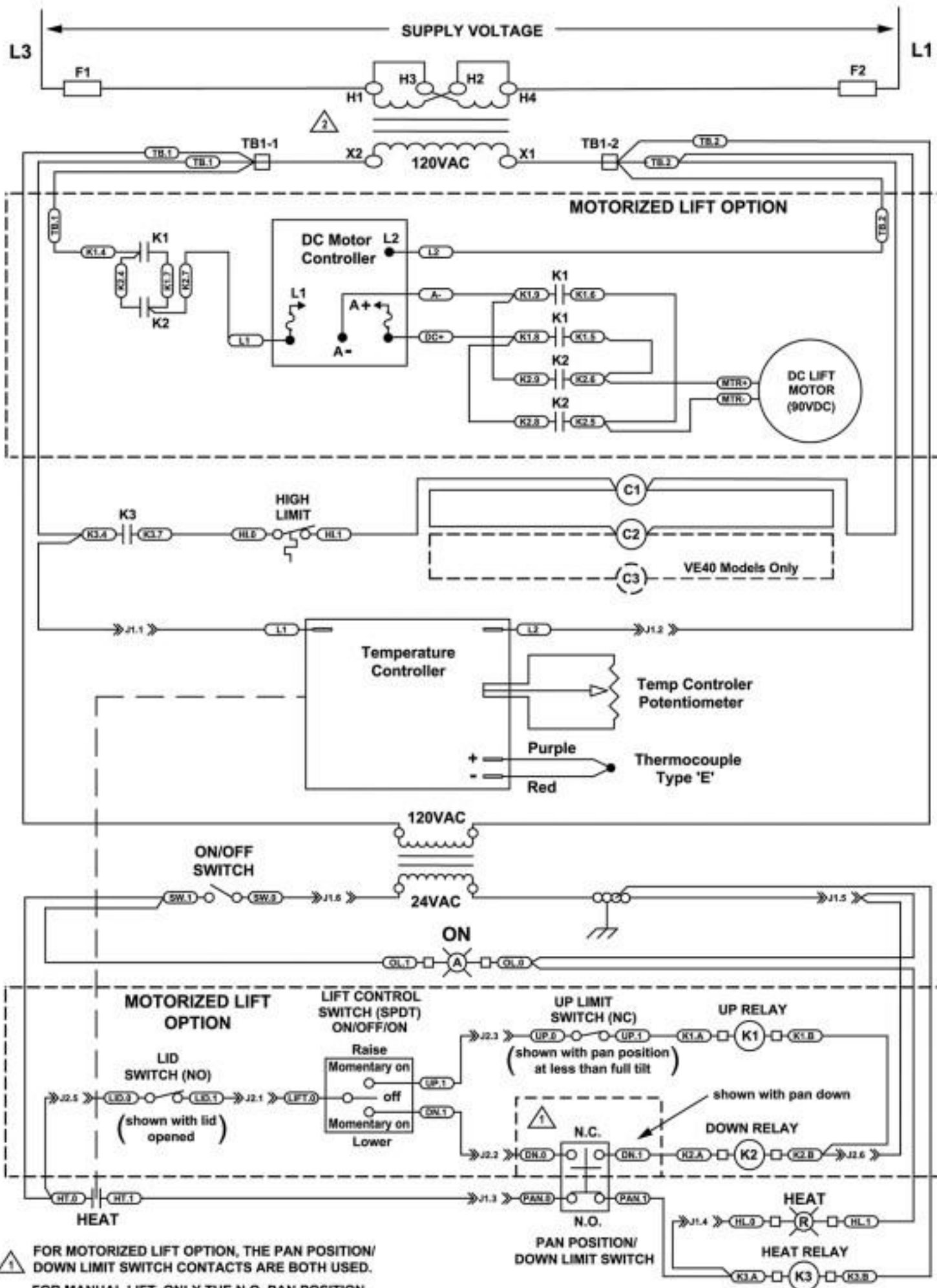
30 GALLON

12 HEATERS (1000W PER)



SUPPLY VOLTAGE





1 FOR MOTORIZED LIFT OPTION, THE PAN POSITION/ DOWN LIMIT SWITCH CONTACTS ARE BOTH USED.

FOR MANUAL LIFT, ONLY THE N.O. PAN POSITION SWITCH CONTACTS ARE USED.