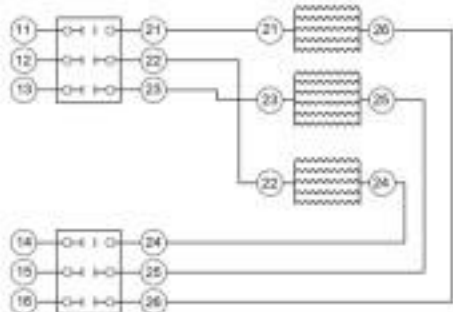


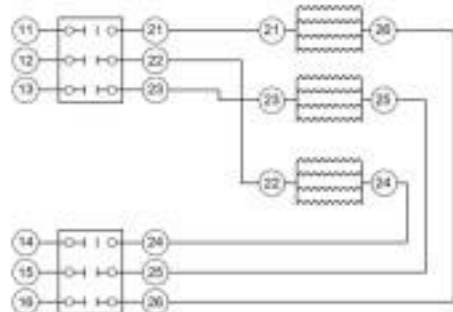
40 GALLON

16 HEATERS (1000W PER)

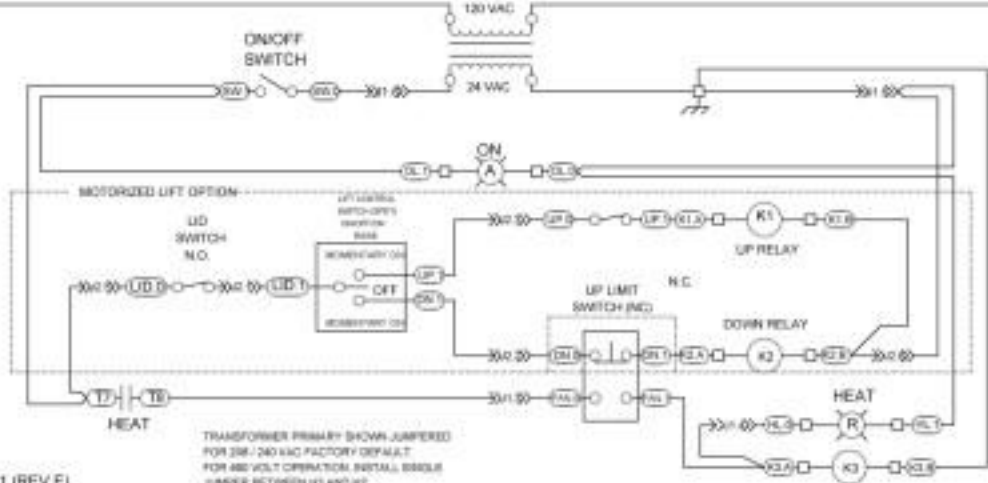
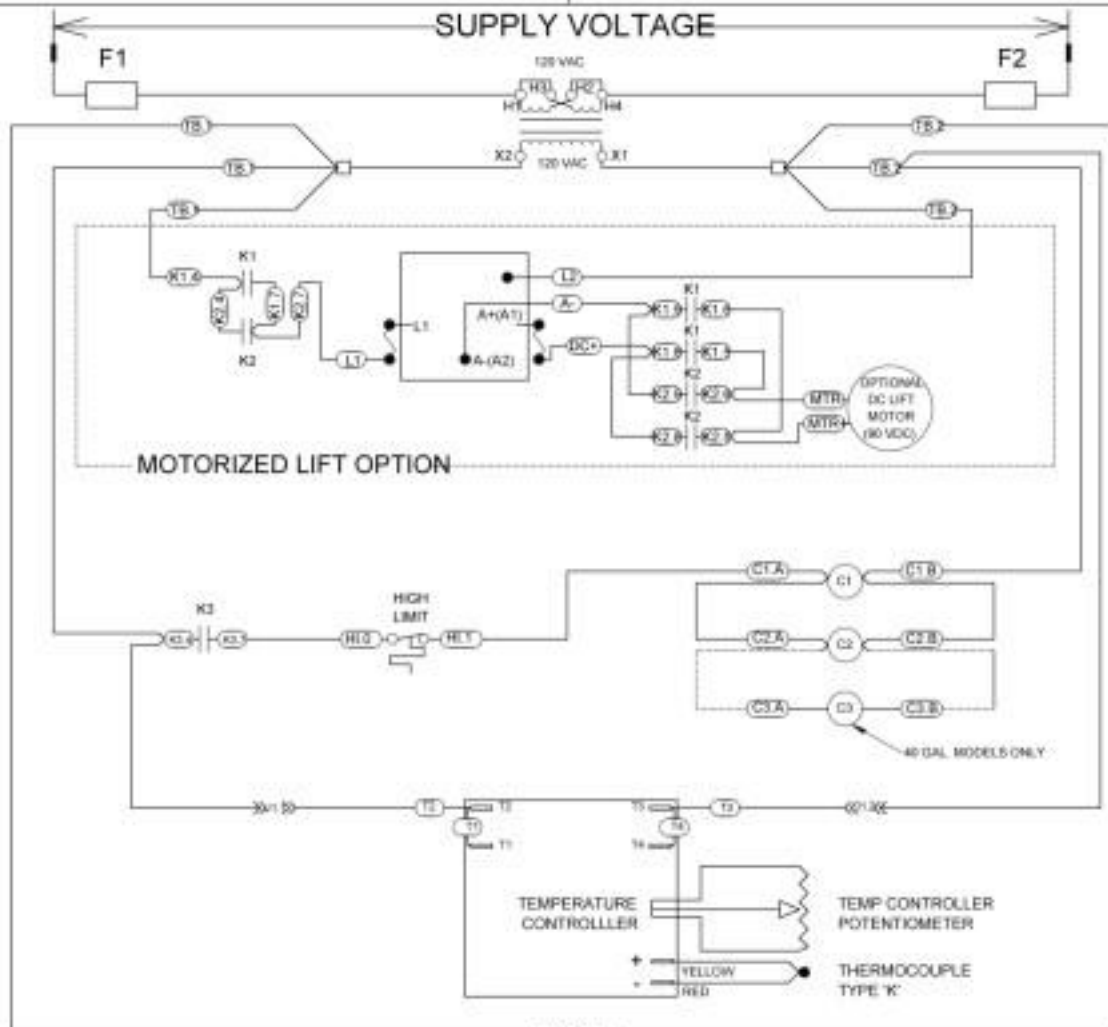


30 GALLON

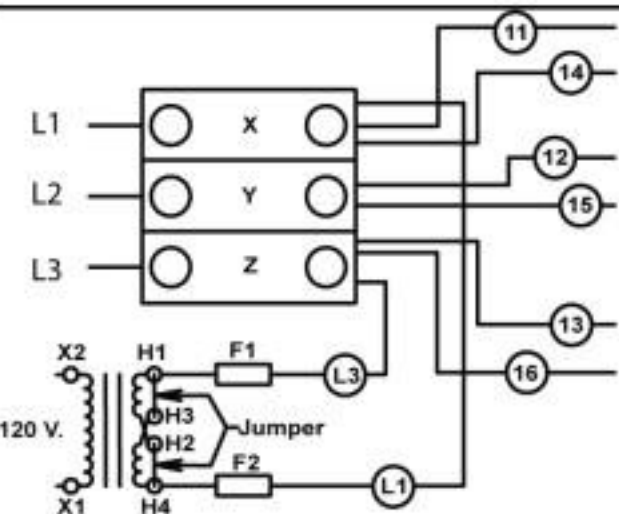
12 HEATERS (1000W PER)



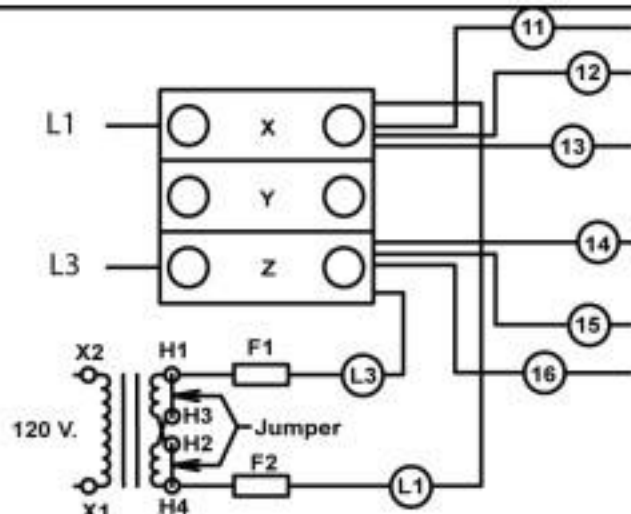
SUPPLY VOLTAGE



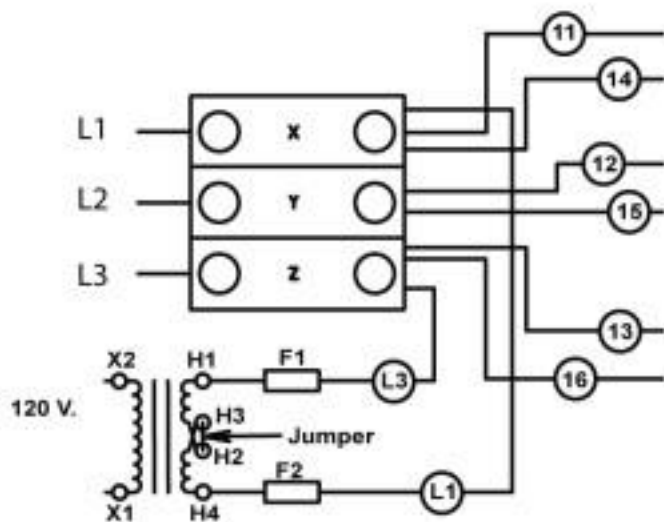
TRANSFORMER PRIMARY SHOWN JUMPED FOR 230-240 VAC FACTORY DEFAULT FOR 480 VOLT OPERATION INSTALL BRASS JUMPER BETWEEN K3 AND K2



**TERMINAL BLOCK WIRING
FOR 208/240 VOLT 3 PHASE OPERATION
(Factory Configuration)**



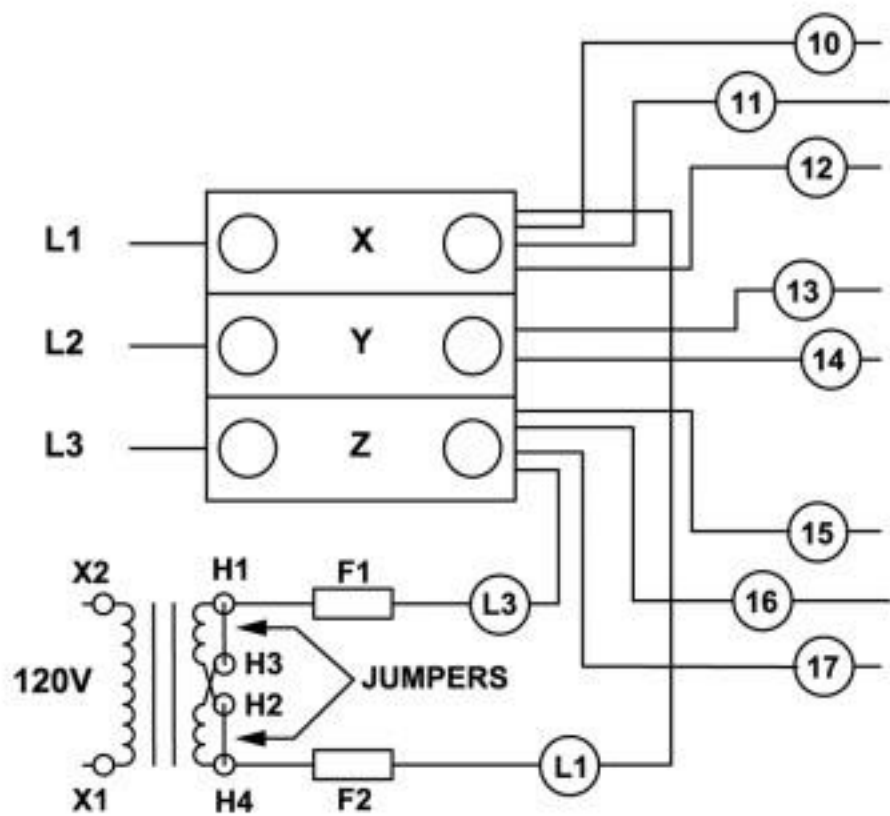
**TERMINAL BLOCK WIRING
FOR 208/240 VOLT 1 PHASE OPERATION
Wires 12 & 13 moved to L1
Wires 14 & 15 moved to L3**



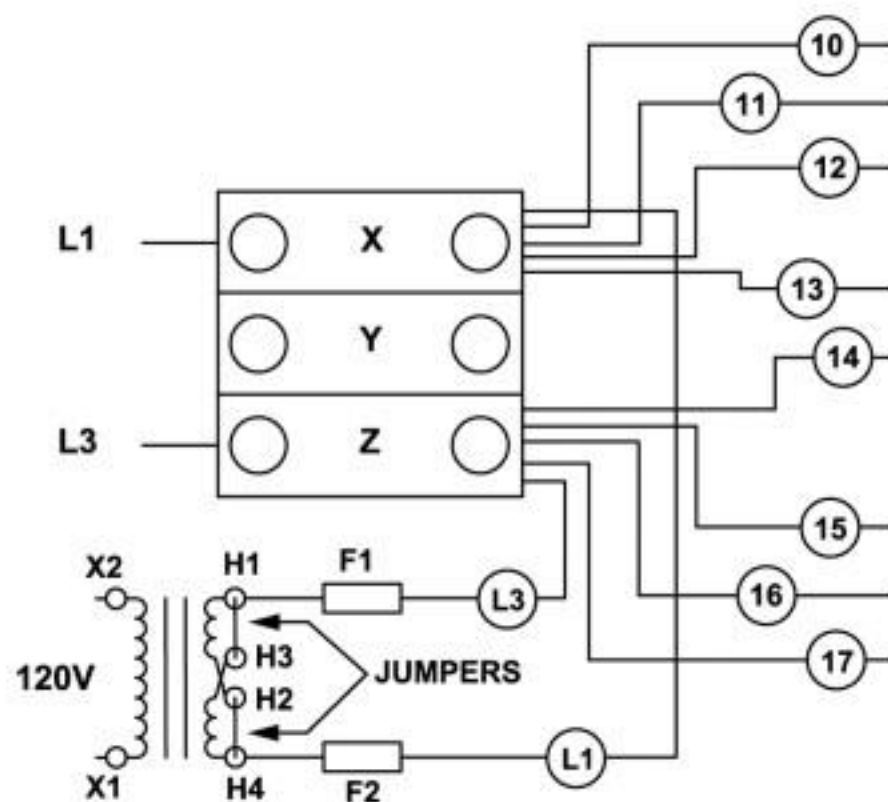
**TERMINAL BLOCK WIRING
FOR 480 VOLT 3 PHASE OPERATION**

**IMPORTANT!!
CHECK DATA PLATE TO DETERMINE
APPLICABLE VOLTAGE CONFIGURATION
FOR THIS UNIT!**

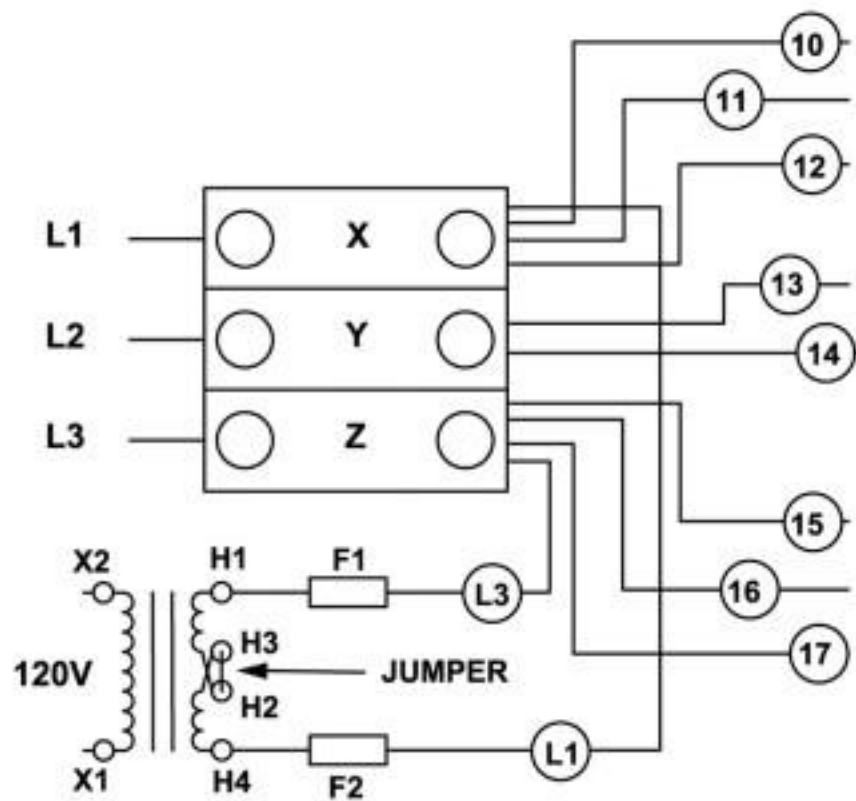
**30 AND 40 GALLON CONFIGURATIONS
SHOWN.**



208/240 VOLT 3 PHASE CONNECTION
(Factory Default Configuration)



208/240 VOLT 1 PHASE CONNECTION
(Wire 13 moved to L1, Wire 14 moved to L3)



480 VOLT 3 PHASE CONNECTION ONLY

IMPORTANT!!
CHECK DATA PLATE TO DETERMINE
APPLICABLE
VOLTAGE CONFIGURATION FOR THIS UNIT!

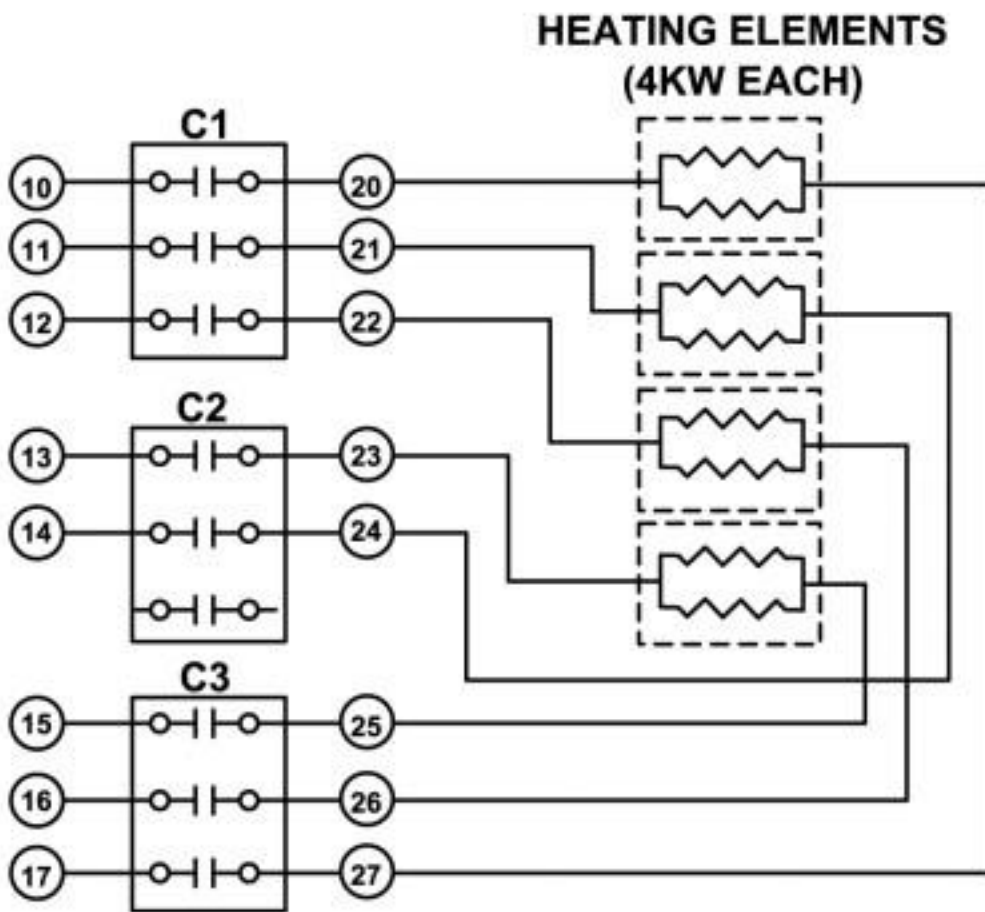
40 GALLON CONFIGURATIONS SHOWN.
WIRES 10 AND 17 NOT PRESENT ON
30 GALLON MODELS.

DERIVED FROM:
854714 REV. B

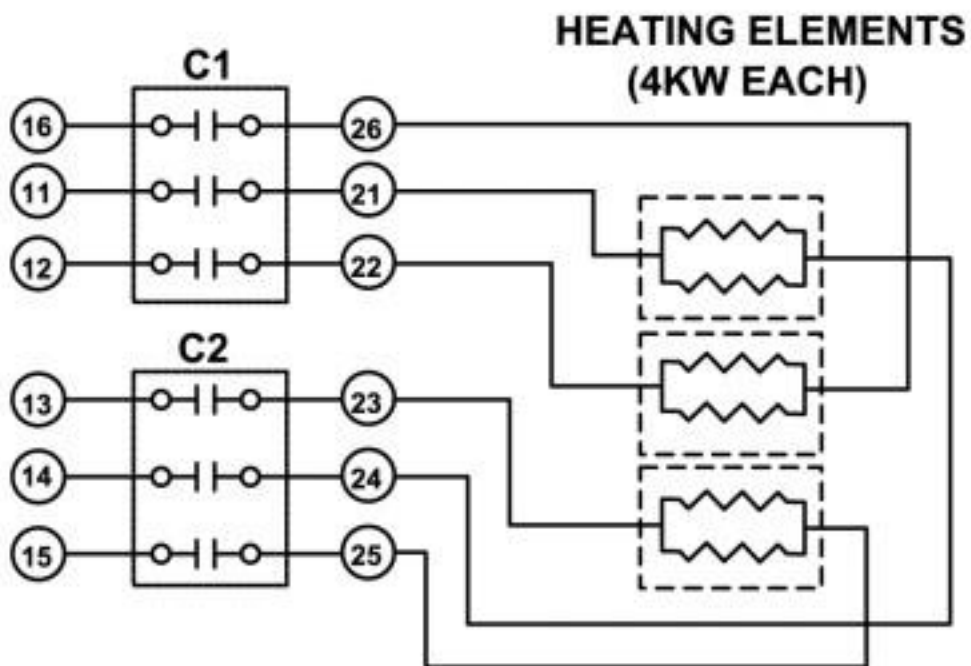
TERMINAL BLOCK WIRING
MODELS VE40/VE30
SINGLE AND THREE PHASE POWER
208/240/480V

A11378

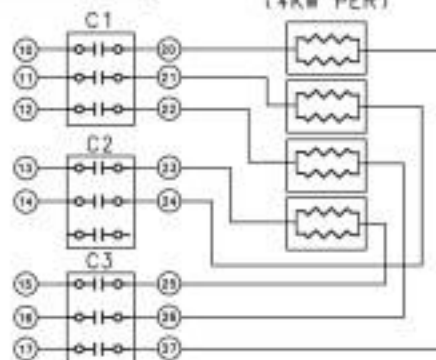
40 GALLON



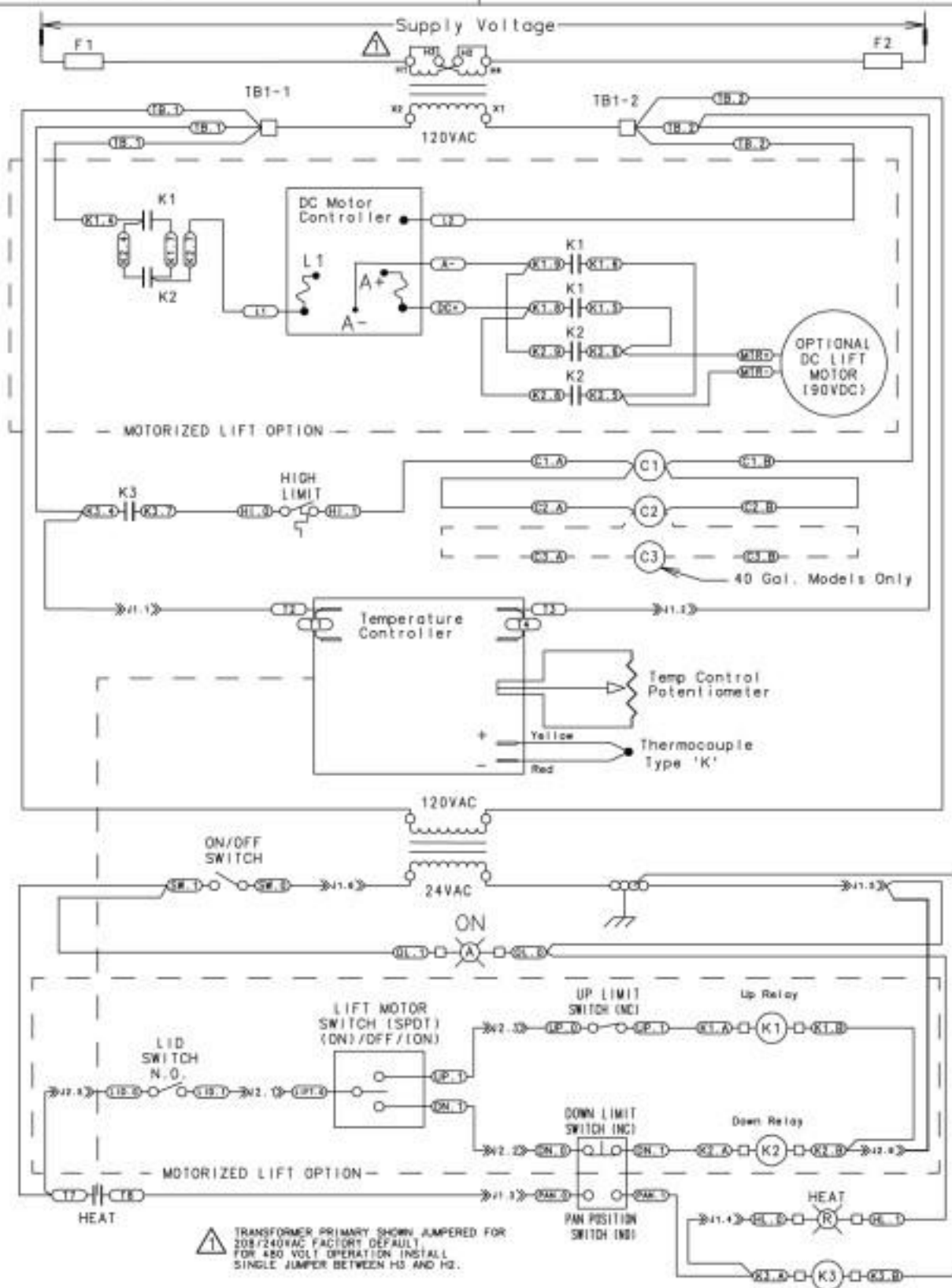
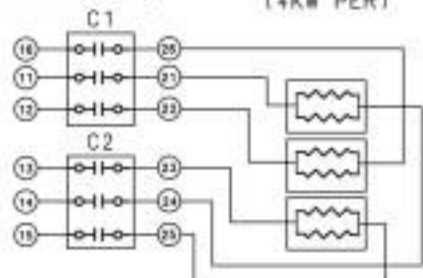
30 GALLON

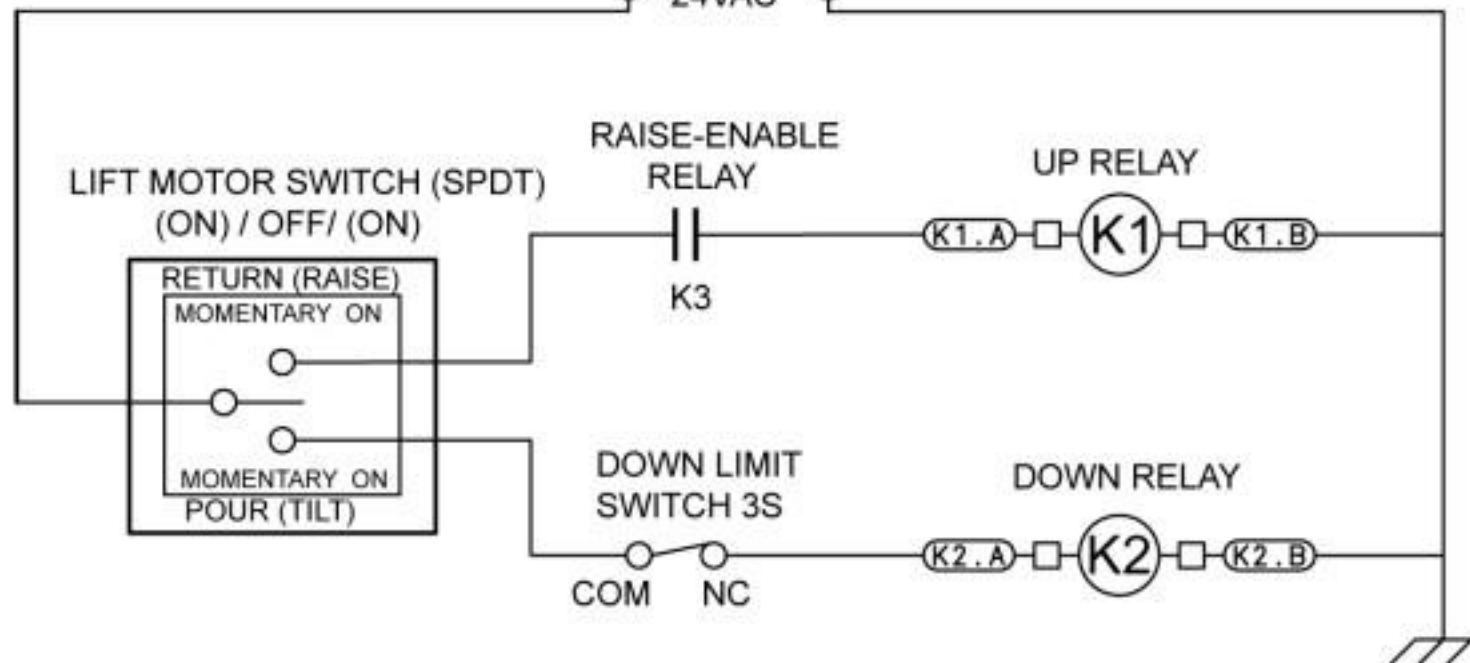
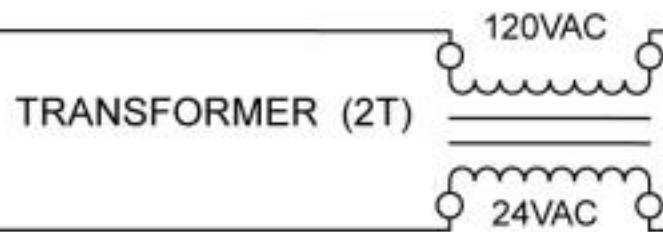
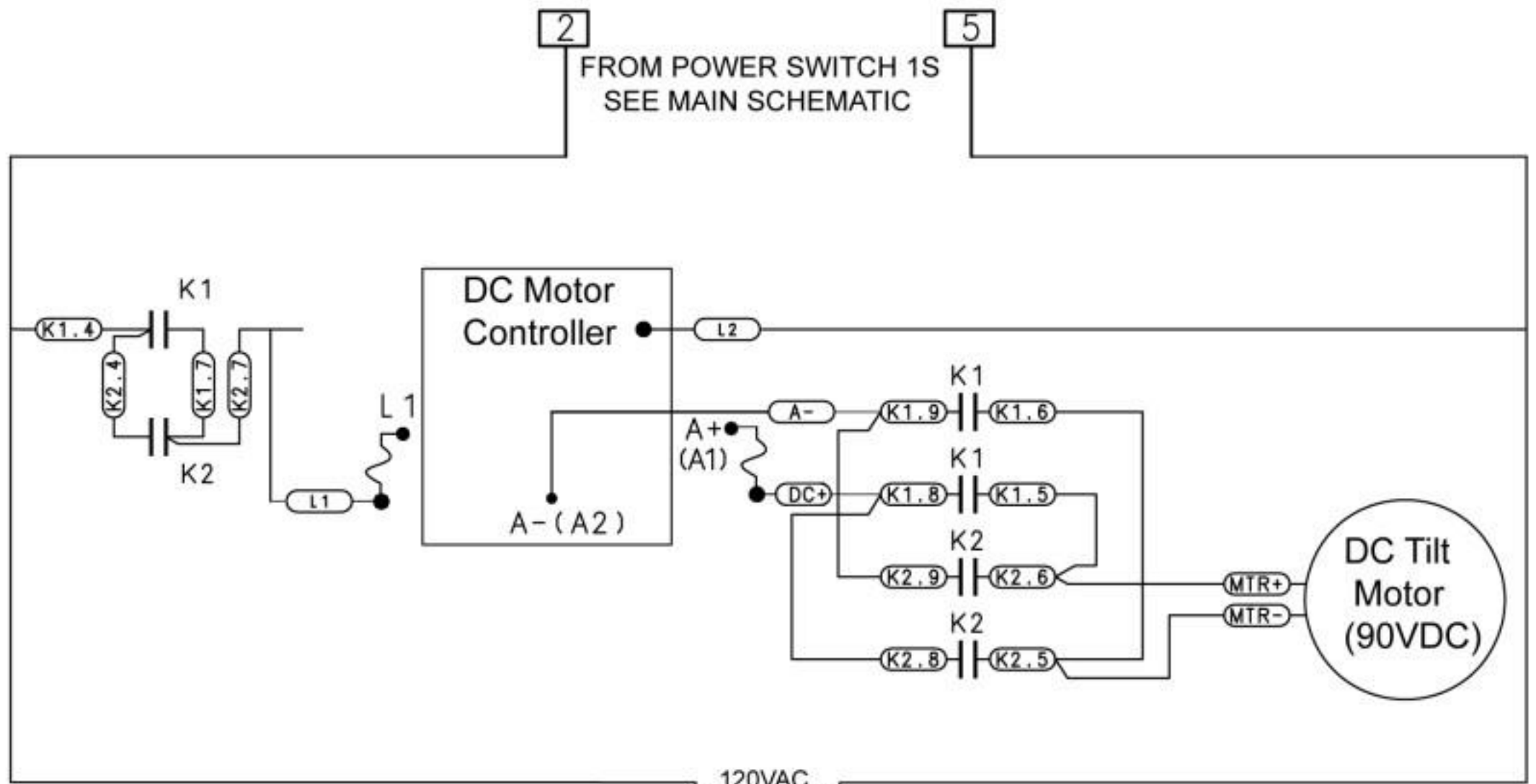


40 GALLON

HEATER
(4KW PER)

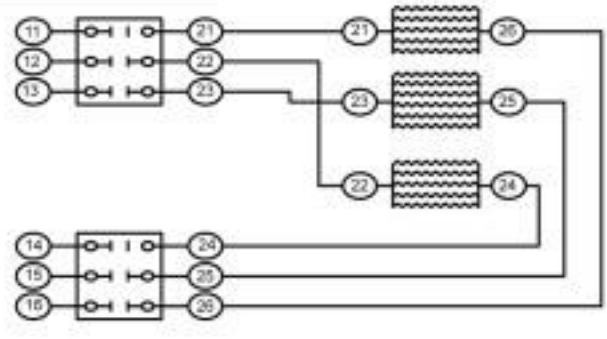
30 GALLON

HEATER
(4KW PER)



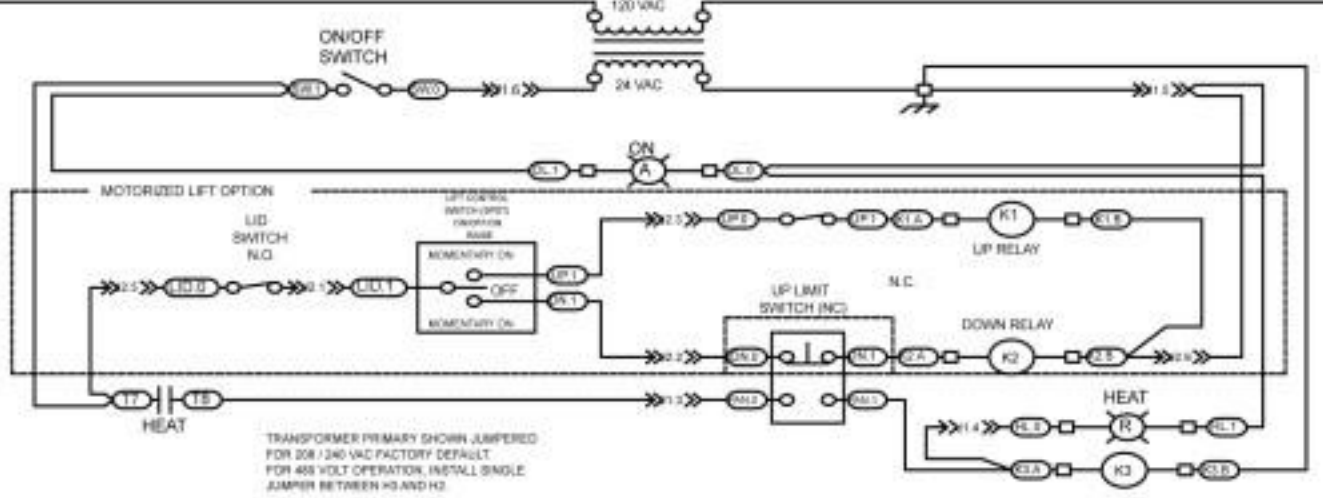
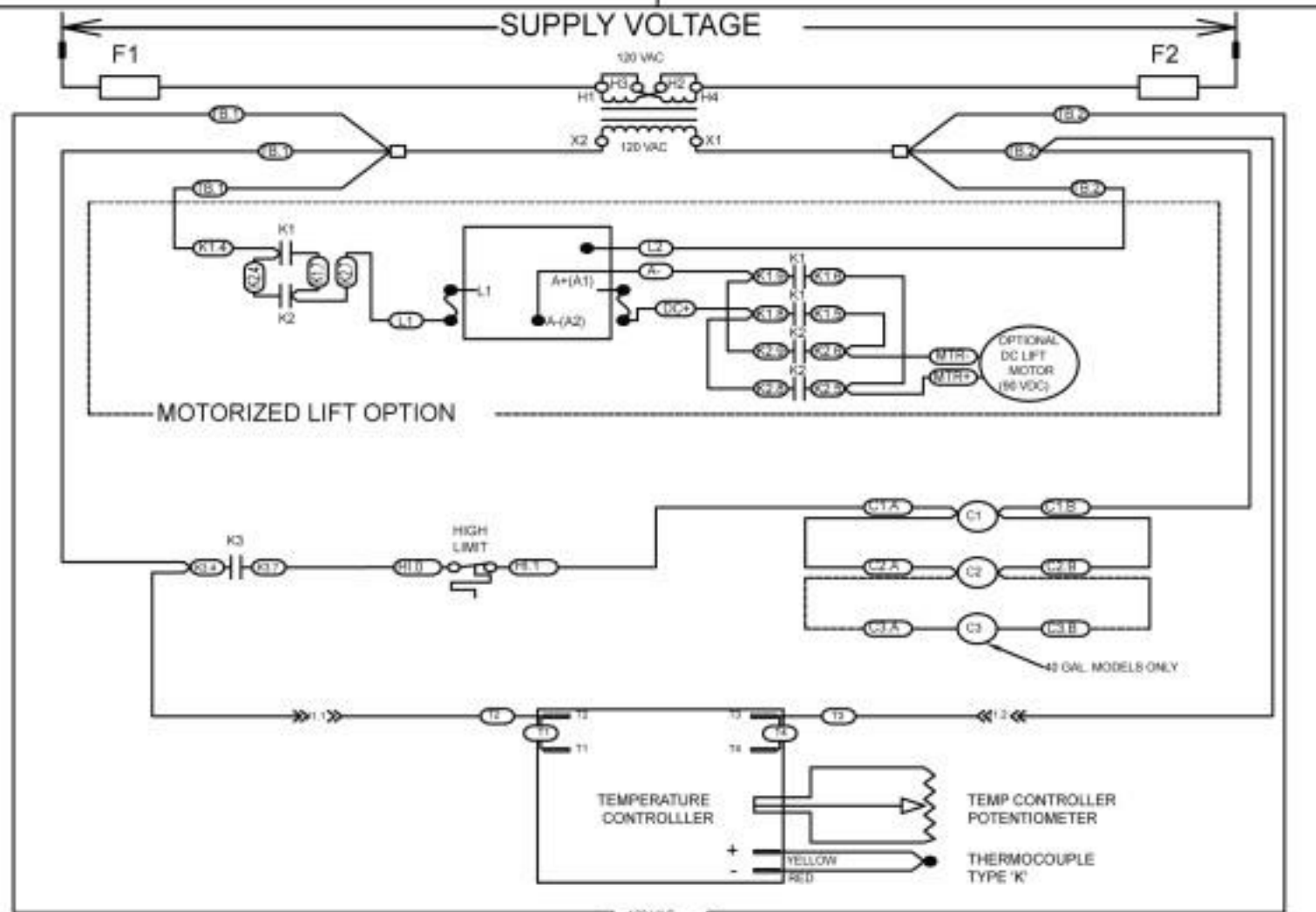
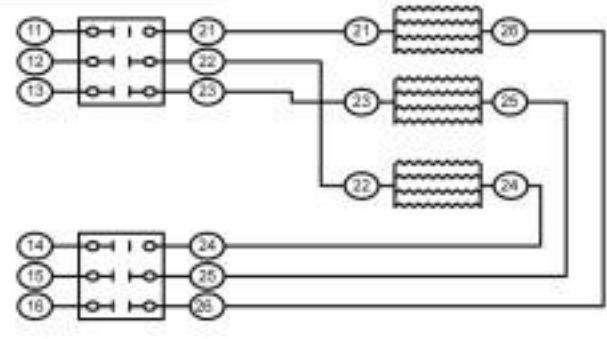
40 GALLON

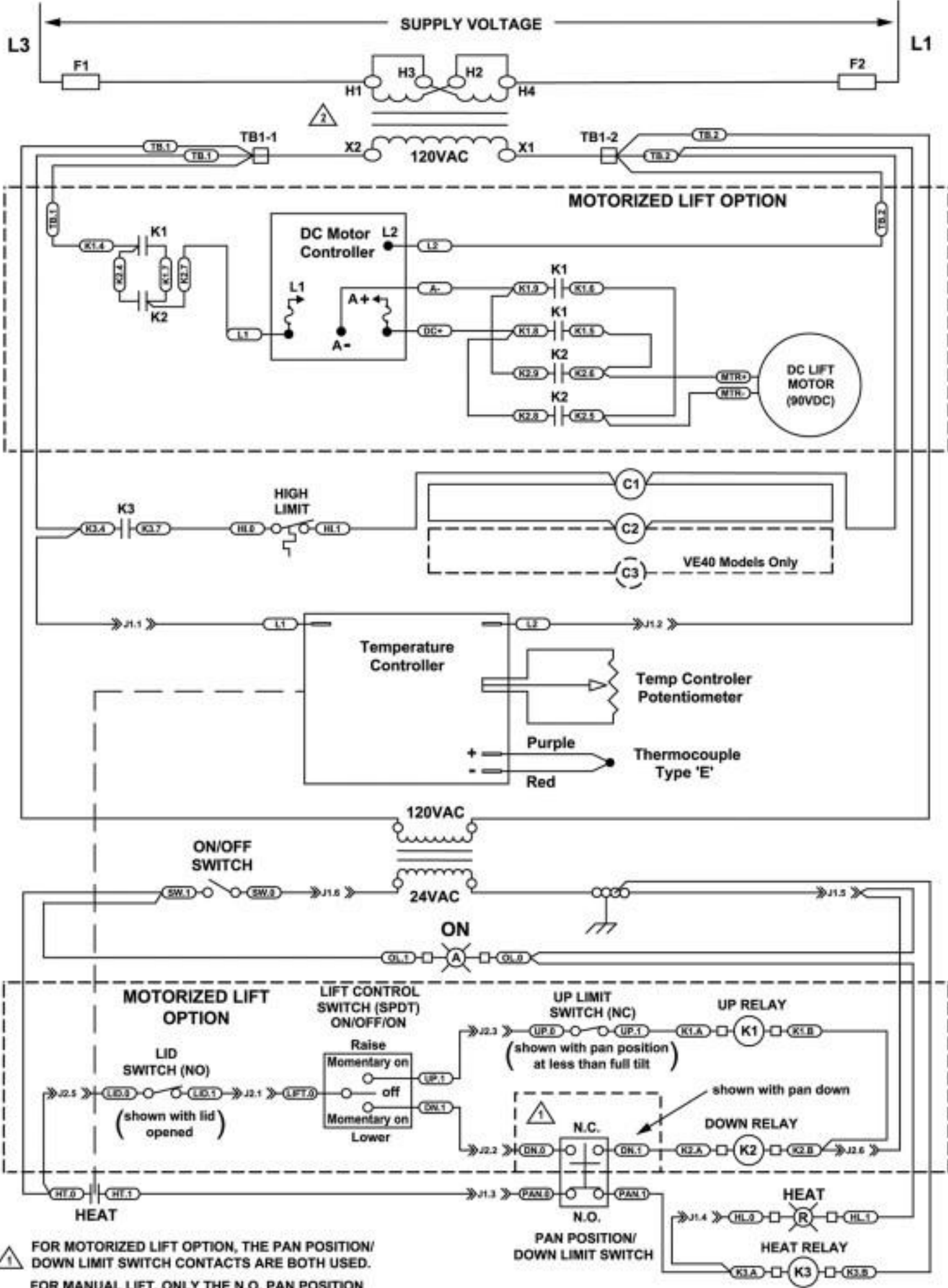
16 HEATERS (1000W PER)



30 GALLON

12 HEATERS (1000W PER)





⚠ FOR MOTORIZED LIFT OPTION, THE PAN POSITION/
 DOWN LIMIT SWITCH CONTACTS ARE BOTH USED.
 FOR MANUAL LIFT, ONLY THE N.O. PAN POSITION