

# VULCAN

## CATALOG OF REPLACEMENT PARTS

### VEC ELECTRIC CONVEYOR OVEN

*MODELS*                      *ML NUMBER*

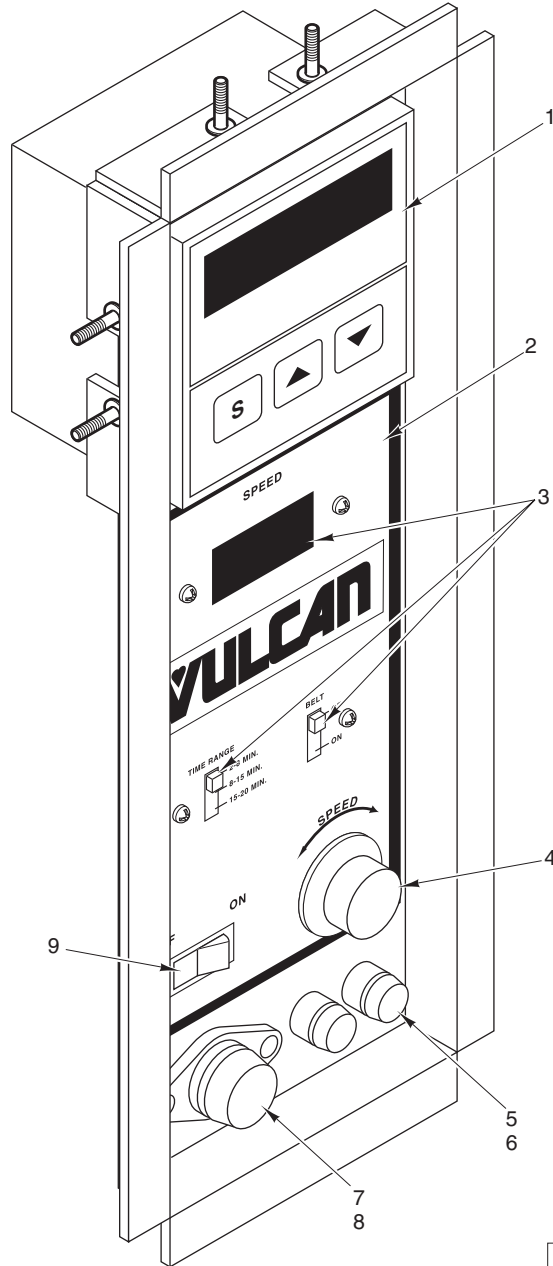
*VEC3018*                      *ML-136013*  
*VEC3018*                      *ML-136014*  
*VEC4018*                      *ML-136015*

*PRIOR MLS COVERED  
IN THIS CATALOG*

*VEC3018*                      *ML-126198*  
*VEC4018*                      *ML-126199*  
*VEC3018*                      *ML-126401*



**For additional information on Vulcan-Hart Company or to locate an authorized parts and service provider in your area, visit our website at [www.vulcanhart.com](http://www.vulcanhart.com)**

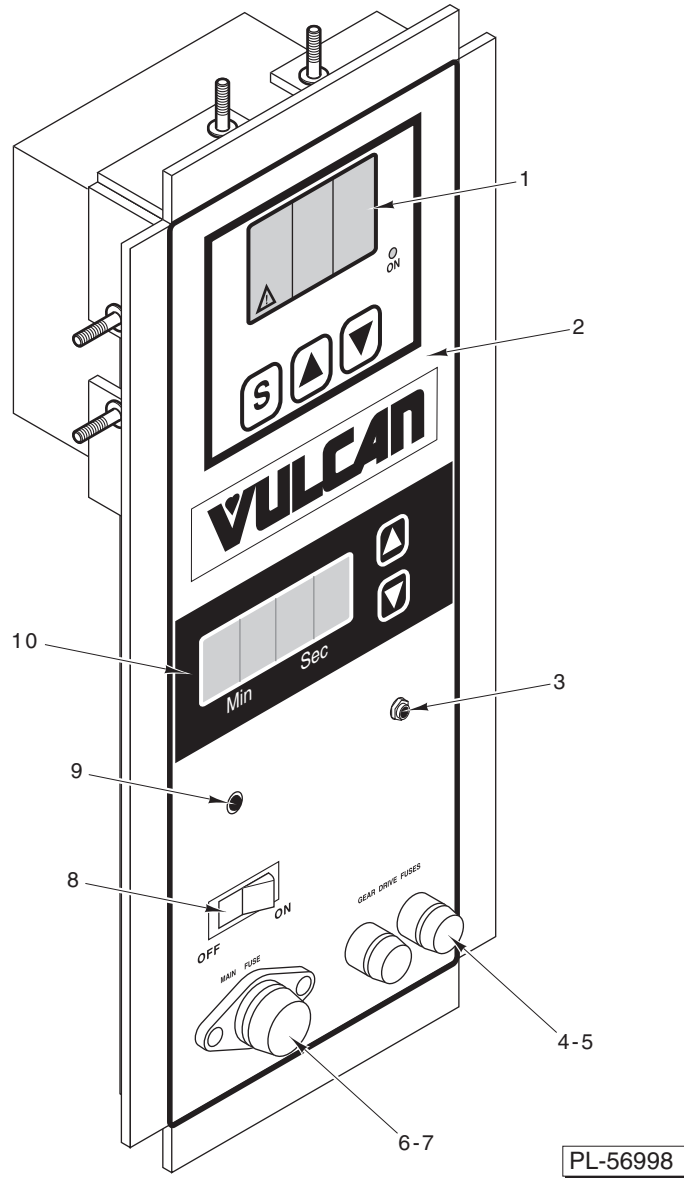


PL-56999

**CONTROL PANEL  
(ML-126198, ML-126199, AND ML-126401)**

**CONTROL PANEL  
(ML-126198, ML-126199, AND ML-126401)**

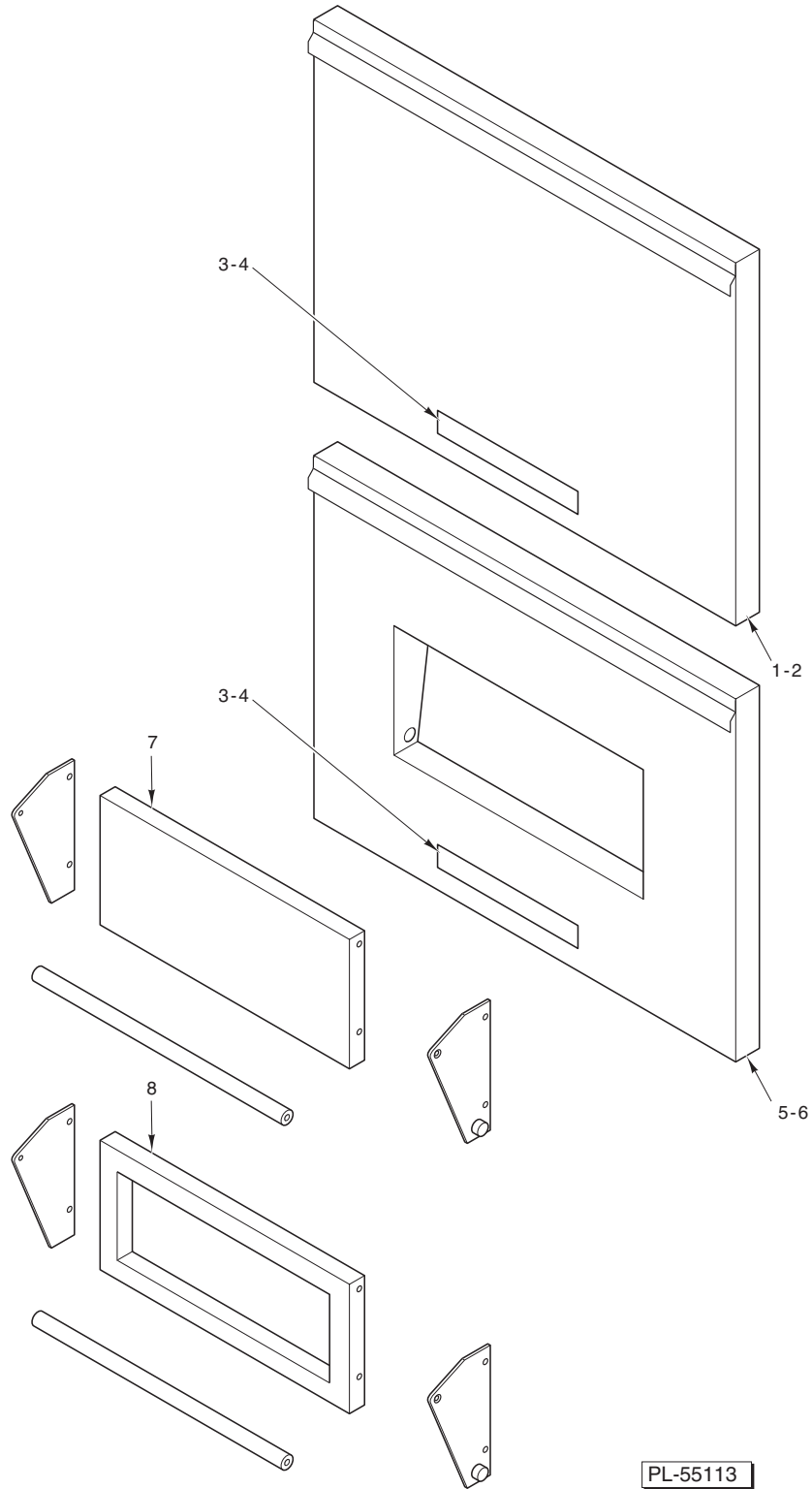
ILLUS.	PART NO.	NAME OF PART	AMT.
PL-56999			
1	00-425058-00001	Controller – Temperature .....	1
2	00-425060-00001	Decal – Vulcan .....	1
3	00-425063-00001	Board – Speed Control (ML-126198, ML-126199, & ML-126401) .....	1
4	00-425062-00001	Knob – Speed Control .....	1
5	00-425535-00001	Holder – Fuse (Drive Motor) .....	2
6	FE-022-29	Fuse (250 V.) (1 Amp.) .....	2
7	00-425537-00001	Holder – Fuse (Control Circuit) .....	1
8	00-425538-00001	Fuse (25 Amp.) (Control Circuit) .....	1
9	00-425451-00001	Switch – ON/OFF .....	1
	00-425059-00001	Thermocouple .....	1
	00-425876-00001	Sleeve – Wrap (Polyethylene) .....	1
	00-402558-00004	Clip – Tubing .....	1
	SD-029-04	Self-Tapping Screw 8-32 x 3/8 Phil. Truss Hd., Type F .....	1



**CONTROL PANEL  
(ML-136013, ML-136014, AND ML-136015)**

**CONTROL PANEL  
(ML-136013, ML-136014, AND ML-136015)**

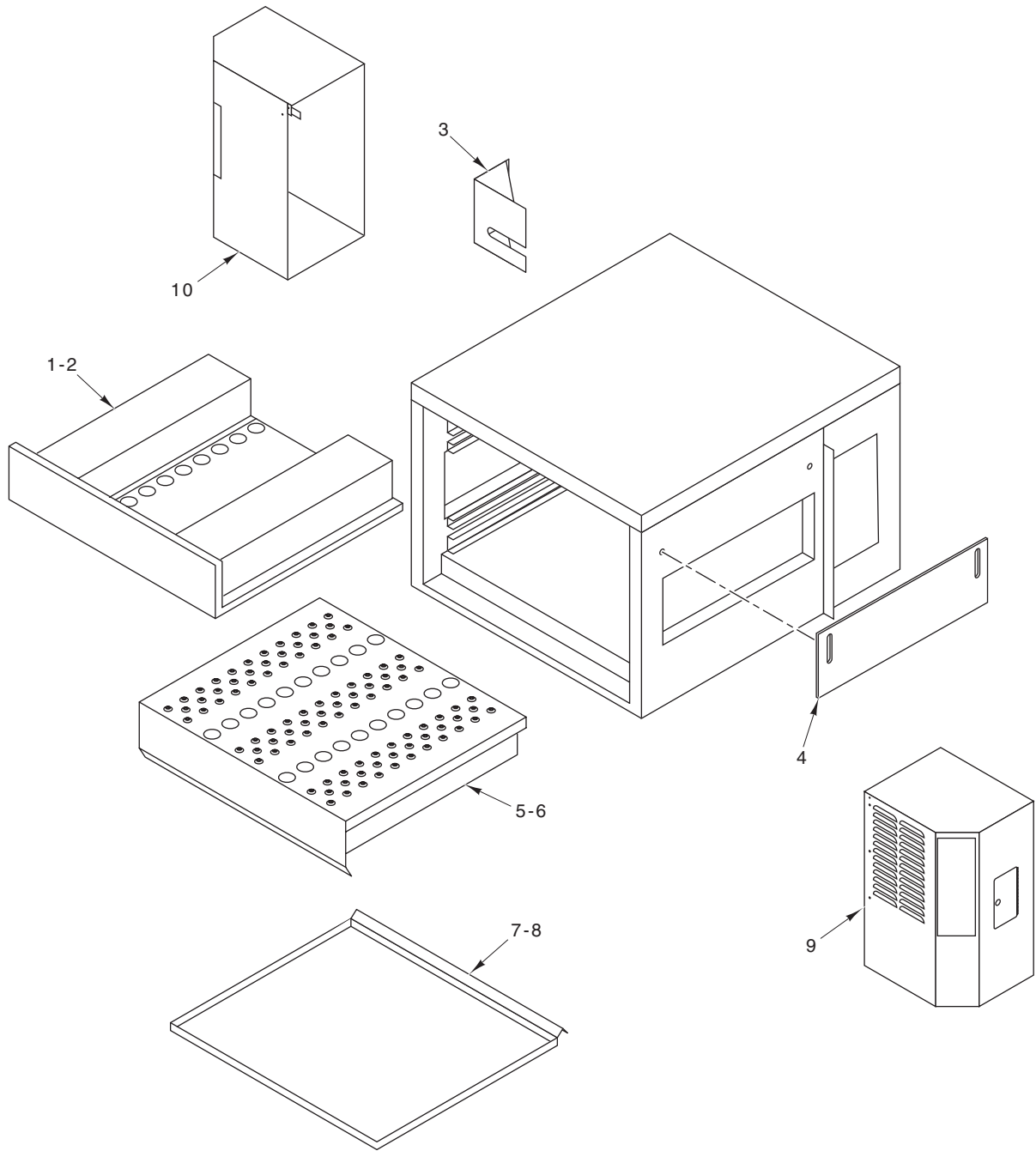
ILLUS.	PART NO.	NAME OF PART	AMT.
PL-56998			
1	00-425058-00001	Controller – Temperature .....	1
2	00-855341-00013	Overlay – Vulcan .....	1
3	00-855341-00010	Reset Button – High Limit .....	1
4	00-425535-00001	Holder – Fuse (Drive Motor) .....	2
5	FE-022-29	Fuse (250 V.) (1 Amp.) .....	2
6	00-425537-00001	Holder – Fuse (Control Circuit) .....	1
7	00-425538-00001	Fuse (25 Amp.) (Control Circuit) .....	1
8	00-425451-00001	Switch – ON/OFF .....	1
9	00-855341-00011	Lamp – Neon, High Limit Indicator .....	1
10	00-427766-00001	Board – Speed Control .....	1
	00-425876-00001	Sleeve – Wrap (Polyethylene) .....	1
	00-402558-00004	Clip – Tubing .....	1
	SD-029-04	Self-Tapping Screw 8-32 x 3/8 Phil. Truss Hd., Type F .....	1



**FRONT SANDWICH DOOR ASSEMBLY**

**FRONT SANDWICH DOOR ASSEMBLY**

ILLUS.	PART NO.	NAME OF PART	AMT.
PL-55113			
1	00-426773-000G1	Panel – Front Access (ML-126198, ML-126401, ML-136013, & ML-136014) .....	1
2	00-426777-000G1	Panel – Front Access (ML-126199 & ML-136015) .....	1
3	00-417700-00001	Namplate – Vulcan .....	1
4	00-425982-00001	Receptacle – Stud .....	2
5	00-426781-000G1	Panel – Front Access (ML-126198, ML-126401, ML-136013, & ML-136014) .....	1
6	00-426786-000G1	Panel – Front Access (ML-126199 & ML-136015) .....	1
7	00-427192-000G1	Door – Front Sandwich (SST) .....	1
8	00-427188-000G1	Door – Front Sandwich (Glass) .....	1

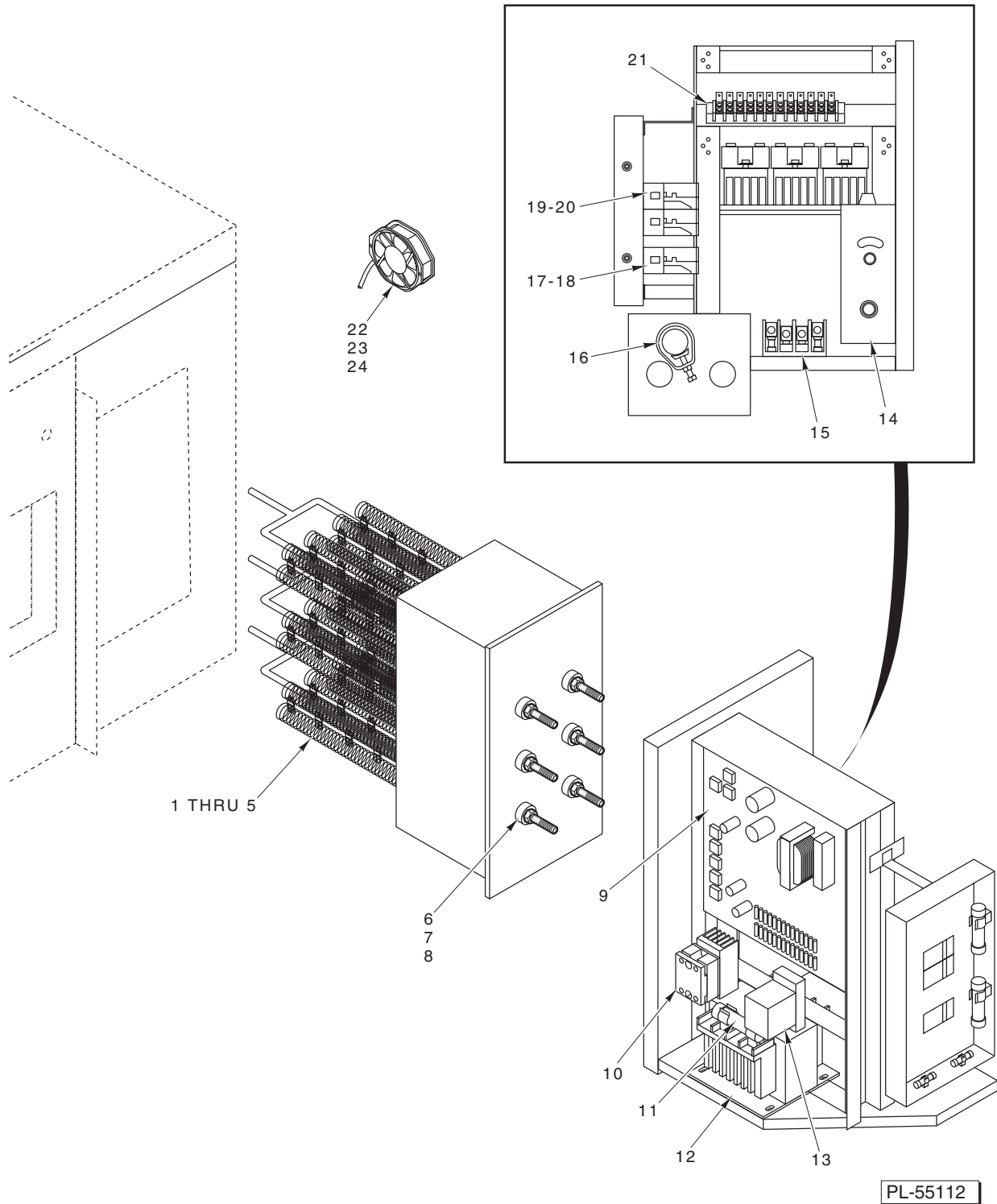


PL-56997

PANELS AND DUCTS

PANELS AND DUCTS

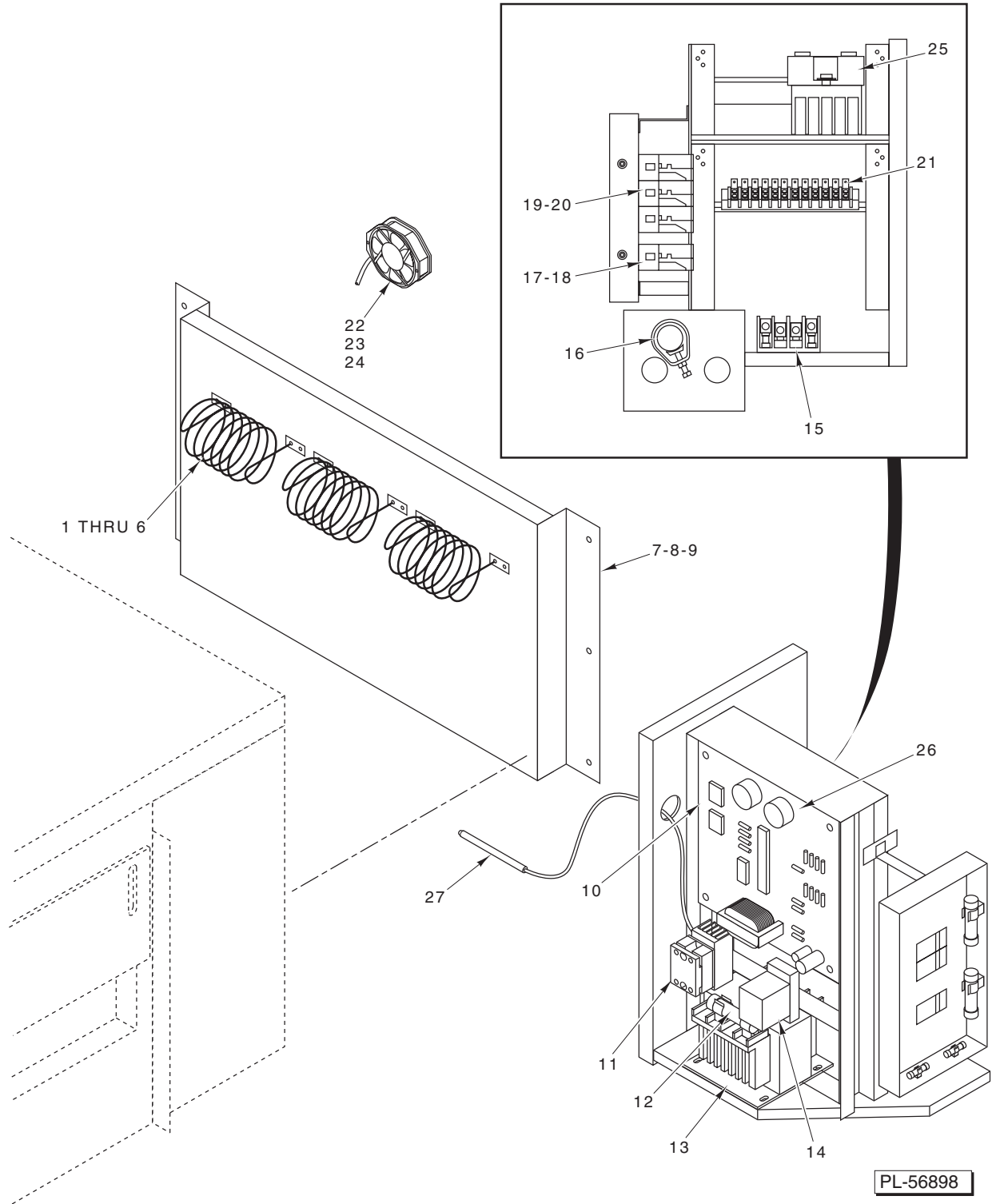
ILLUS.	PART NO.	NAME OF PART	AMT.
PL-56997			
1	00-425483-000G1	Panel – Air Distribution (Top) (ML-126198, ML-126401, ML-136013, & ML-136014) .....	1
2	00-425483-000G2	Panel – Air Distribution (Top) (ML-126199 & ML-136015) .....	1
3	00-427022-000G1	Chain Cover Assy. ....	1
4	00-427021-000G1	Tunnel Curtain (18 In.) .....	2
5	00-425485-000G1	Panel – Air Distribution (Bottom) (ML-126198, ML-126401, ML-136013, & ML-136014) .....	1
6	00-425485-000G2	Panel – Air Distribution (Bottom) (ML-126199 & ML-136015) .....	1
7	00-425481-00001	Tray – Crumb (ML-126198, ML-126401, ML-136013, & ML-136014) .....	1
8	00-425481-00002	Tray – Crumb (ML-126199 & 136012) .....	1
9	00-425988-000G1	Control Cover Assy. (Right Side) .....	1
10	00-425724-000G1	Conveyor Drive Motor Cover Assy. (Left Side) .....	1



**HEATING ELEMENT ASSEMBLY  
(ML-126198, ML-126199, & ML-126401)**

**HEATING ELEMENT ASSEMBLY  
(ML-126198, ML-126199, & ML-126401)**

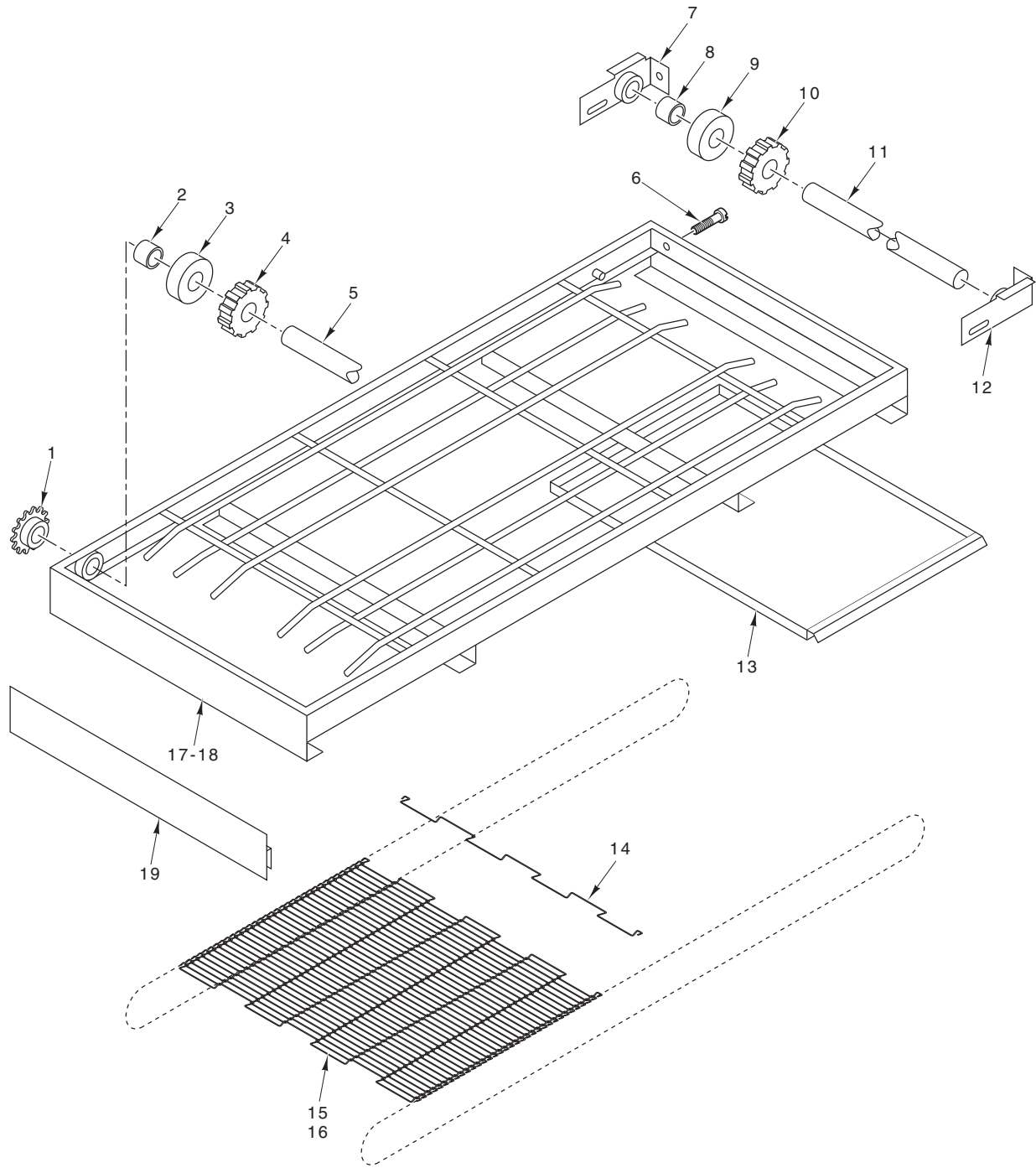
ILLUS. PL-55112	PART NO.	NAME OF PART	AMT.
1	00-425820-00001	Element – Open Coil (3.33 kW) (208 V.) (ML-126198) .....	3
2	00-425497-00001	Element – Open Coil (5.0 kW) (208 V.) (ML-126199 & ML-126401) .....	3
3	00-425821-00001	Element – Open Coil (3.33 kW) (208 V.) (ML-126198) .....	3
4	00-425498-00001	Element – Open Coil (5.0 kW) (240 V.) (ML-126199 & ML-126401) .....	3
5	00-425822-00001	Element – Open Coil (3.33 kW) (480 V.) (ML-126198) .....	3
6	00-425880-00001	Ferrule – Ceramic .....	6
7	SC-114-64	Mach. Screw 10-32 x 1 <sup>3</sup> / <sub>4</sub> Slotted Rd. Hd. ....	6
8	NS-046-88	Nut Assy. 10-32 Hex KEPS .....	18
9	00-426559-00001	Board – Speed Control .....	1
10	00-425503-00001	Relay – Solid State (240 V.) (Motor) .....	1
11	00-426394-00001	Fuse (2 Amp.) (Transformer) .....	1
12	00-425507-00001	Transformer (220 V. Pri.) (110 V. Sec.) .....	1
13	00-425501-00001	Power Supply – DC .....	1
14	00-425682-00001	Relay (W/Heat Sink) .....	3
15	00-425994-00001	Block – Terminal (4 Pole) .....	1
16	00-425983-00001	Strain Relief <sup>3</sup> / <sub>4</sub> .....	1
17	00-425672-00001	Holder – Fuse (Double) .....	1
18	00-425675-00001	Fuse (50 Amp.) (Heating Element) .....	2
19	00-425660-00001	Holder – Fuse (Single) .....	1
20	00-425671-00001	Fuse (20 Amp.) (Blower Motor) .....	1
21	00-425871-00001	Block – Terminal (12 Pole) .....	1
22	00-426464-00001	Fan – Axial (230 V.) .....	1
23	00-425065-00001	Guard – Axial Fan Cover .....	1
24	00-425066-00001	Cord – Axial Fan .....	1
	00-425502-00002	Control – High Limit .....	1



**HEATING ELEMENT ASSEMBLY  
(ML-136013, ML-136014, & ML-136015)**

**HEATING ELEMENT ASSEMBLY  
(ML-136013, ML-136014, & ML-136015)**

ILLUS. PL-56898	PART NO.	NAME OF PART	AMT.
1	00-855341-00001	Element – Tubular (3.4 kW) (208 V.) (ML-136013) .....	1
2	00-855341-00003	Element – Tubular (3.4 kW) (220 V.) (ML-136013) .....	1
3	00-855341-00005	Element – Tubular (3.4 kW) (240 V.) (ML-136013) .....	1
4	00-855341-00002	Element – Tubular (5 kW) (208 V.) (ML-136014 & ML-136015) .....	1
5	00-855341-00004	Element – Tubular (5 kW) (220 V.) (ML-136014 & ML-136015) .....	1
6	00-855341-00006	Element – Tubular (5 kW) (240 V.) (ML-136014 & ML-136015) .....	1
7	00-425880-00001	Ferrule – Ceramic .....	6
8	SC-114-64	Mach. Screw 10-32 x 1 <sup>3</sup> / <sub>4</sub> Slotted Rd. Hd. ....	6
9	NS-046-88	Nut Assy. 10-32 Hex KEPS .....	18
10	00-426559-00001	Board – Speed Control .....	1
11	00-425503-00001	Relay – Solid State (240 V.) (Motor) .....	1
12	00-426394-00001	Fuse (2 Amp.) (Transformer) .....	1
13	00-425507-00001	Transformer (220 V. Pri.) (110 V. Sec.) .....	1
14	00-425501-00001	Power Supply – DC .....	1
15	00-425994-00001	Block – Terminal (4 Pole) .....	1
16	00-425983-00001	Strain Relief <sup>3</sup> / <sub>4</sub> .....	1
17	00-425672-00001	Holder – Fuse (Double) .....	1
18	00-425675-00001	Fuse (50 Amp.) (Heating Element) .....	2
19	00-425660-00001	Holder – Fuse (Single) .....	1
20	00-425671-00001	Fuse (20 Amp.) (Blower Motor) .....	1
21	00-425871-00001	Block – Terminal (12 Pole) .....	1
22	00-426464-00001	Fan – Axial (230 V.) .....	1
23	00-425065-00001	Guard – Axial Fan Cover .....	1
24	00-425066-00001	Cord – Axial Fan .....	1
25	00-855341-00008	Control – Relay Power W/Heat Sink .....	1
26	00-855341-00007	Board – High Limit Control .....	1
27	00-855341-00009	Thermocouple – High Limit Probe .....	1

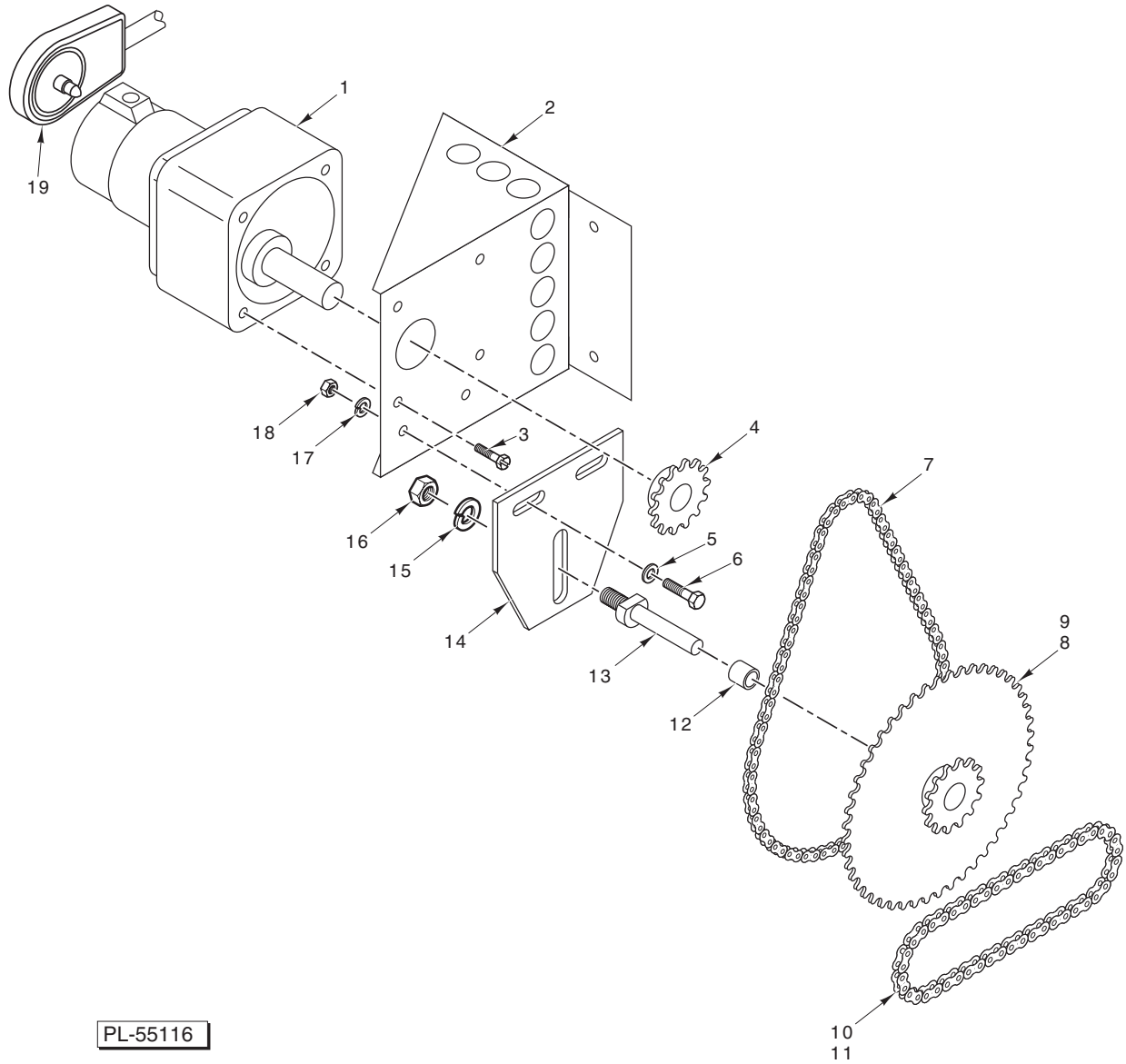


PL-55115

**CONVEYOR ASSEMBLY**

**CONVEYOR ASSEMBLY**

ILLUS.	PART NO.	NAME OF PART	AMT.
PL-55115			
1	00-425444-00001	Sprocket – Drive .....	1
2	00-425446-00001	Bushing – Shaft .....	2
3	00-425447-00001	Blank – Belt .....	2
4	00-425448-00001	Sprocket – Belt .....	6
5	00-425445-00001	Shaft – Drive .....	1
6	SC-022-36	Mach. Screw 1/4-20 x 1 1/4 Slotted Flat Hd. ....	2
7	00-425673-000G1	Tensioner – Belt .....	1
8	00-425446-00001	Bushing – Shaft .....	2
9	00-425447-00001	Blank – Belt .....	6
10	00-425448-00001	Sprocket – Belt .....	2
11	00-425480-00001	Shaft – Idle .....	1
12	00-425673-000G1	Tensioner – Belt .....	1
13	00-425475-00001	Pan – Crumb 18 In. ....	2
14	00-425476-00001	Strand – Splicing 18 In. ....	2
15	00-425449-00001	Wire – Belt (18 In.) (ML-126198, ML-126401, ML-136013, & ML-136014) .....	1
16	00-425477-00001	Wire – Belt (18 In.) (ML-126199 & ML-136015) .....	1
17	00-425676-000G1	Conveyor Assy. (ML-126198, ML-126401, ML-136013, & ML-136014) .....	1
18	00-425677-000G1	Conveyor Assy. (ML-126199 & ML-136015) .....	1
19	00-425450-00001	Stop – Product .....	1

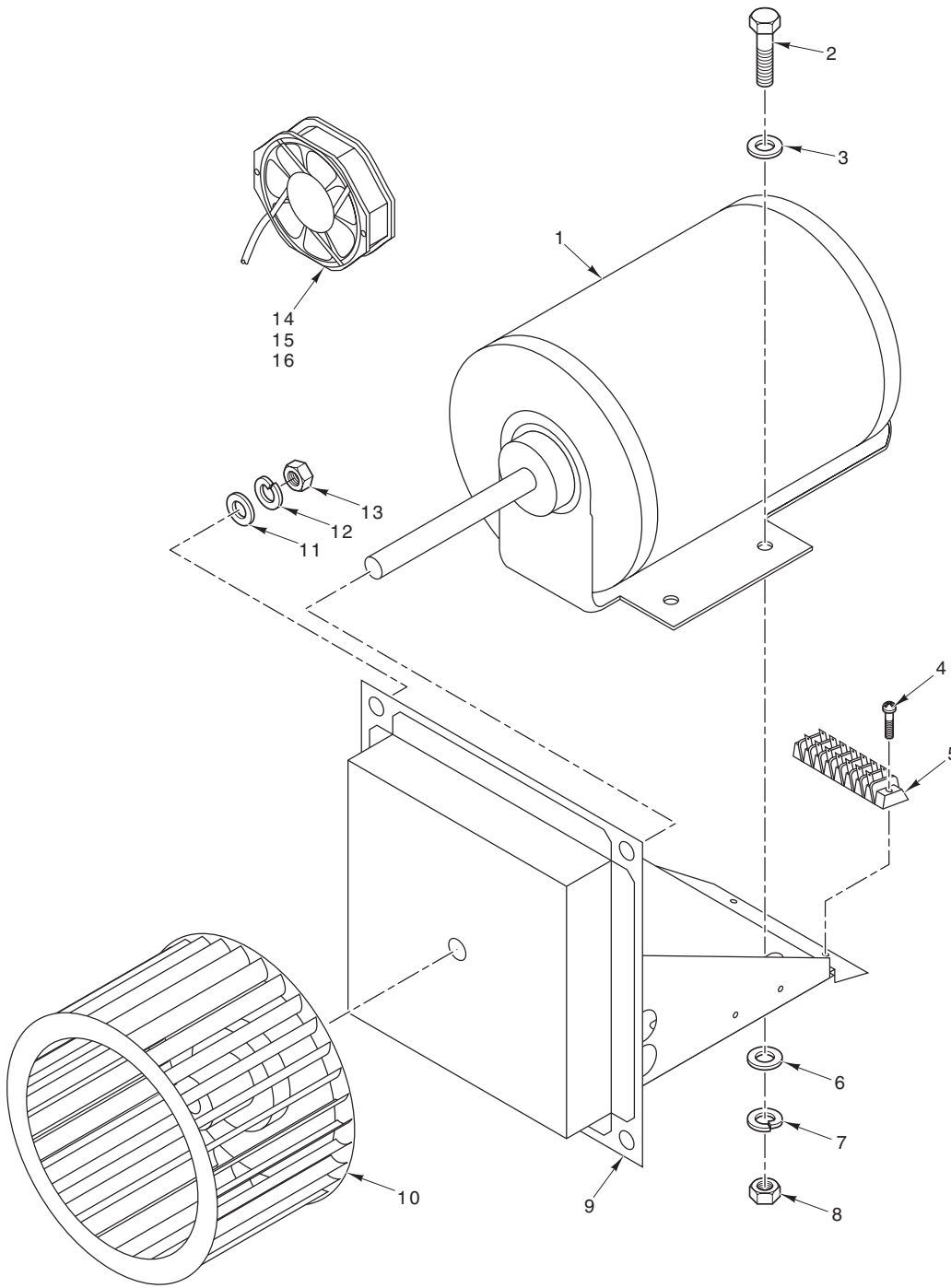


PL-55116

### CONVEYOR DRIVE MOTOR

**CONVEYOR DRIVE MOTOR**

ILLUS.	PART NO.	NAME OF PART	AMT.
PL-55116			
1	00-427037-00001	Drive – Belt (Gearmotor) .....	1
2	00-425857-00001	Plate – Gearmotor Mounting .....	1
3	SC-114-03	Mach. Screw 10-32 x 1/2 Slotted Hex Washer Hd. ....	4
4	00-425072-00001	Sprocket (Gearmotor) .....	1
5	WS-003-03	Washer .....	2
6	SC-110-26	Mach. Screw 1/4-20 x 1 Hex Hd. ....	4
7	00-425442-00001	Chain – Motor to Reducer .....	1
8	00-425073-000G1	Sprocket Assy. – Reducer (Incls. Item 12) (ML-126198, ML-126401, ML-136013, & ML-136014) .....	1
9	00-425074-00001	Sprocket Assy. – Reducer (Incls. Item 12) (ML-126199 & ML-136015) .....	1
10	00-425533-00001	Chain – Reducer to Conveyor (ML-126198, ML-126401, ML-136013, & ML-136014) .....	1
11	00-425540-00001	Chain – Reducer to Conveyor (ML-126199 & ML-136015) .....	1
12	00-425071-00001	Bushing – Reducer .....	1
13	00-425070-00001	Pin – Sprocket (SST) .....	1
14	00-425858-00001	Support – Gear Reducer .....	1
15	WS-006-33	Washer .....	1
16	NS-015-13	Nut 3/8-16 Hex (SST) .....	1
17	WS-006-17	Washer .....	2
18	NS-013-01	Nut 1/4-20 Hex .....	2
19	00-426753-00001	Sensor – Speed Control .....	1



PL-55153

### BLOWER MOTOR AND FAN

**BLOWER MOTOR AND FAN**

ILLUS.	PART NO.	NAME OF PART	AMT.
PL-55153			
1	00-425052-00001	Motor – Blower, High Temp .....	1
2	SC-110-26	Mach. Screw 1/4-20 x 1 Hex Hd. ....	4
3	WS-003-03	Washer .....	4
4	SD-036-46	Self-Tapping Screw 6-20 x 5/8 Slotted Pan Hd., Type BT .....	2
5	00-425452-00001	Block – Terminal .....	1
6	WS-003-03	Washer .....	4
7	WL-006-17	Lockwasher 1/4 Helical (SST) .....	4
8	NS-013-01	Nut 1/4-20 Hex .....	4
9	00-425851-000G1	Support Assy. – Blower Motor .....	1
10	00-425053-00001	Blower – Wheel .....	1
11	WS-006-33	Washer .....	4
12	WL-006-28	Lockwasher 3/8 Helical (SST) .....	4
13	NS-015-13	Nut 3/8-16 Hex (SST) .....	4
14	00-426464-00001	Fan – Axial (230 V.) .....	1
15	00-425065-00001	Guard – Axial Fan Cover .....	1
16	00-425066-00001	Cord – Axial Fan .....	1

**ACCESSORIES AND LEGS**

ILLUS.	PART NO.	NAME OF PART	AMT.
PL-55154			
1	00-425683-000G1	Legs (4 In.) (Set of 4) (SST) (ML-126198, ML-126199, ML-136013, & ML-136014) .....	1
2	00-425686-000G2	Stand (24 In.) W/Shelf & Casters (Single Section & Double Stack Oven) (ML-126198, ML-126401, ML-136013, & ML-136014) .....	1
3	00-425687-000G2	Stand (13 In.) W/Casters (Triple Stack Oven) (ML-126198, ML-126401, ML-136013, & ML-136014) .....	1
4	00-425688-000G2	Stand (24 In.) W/Shelf & Casters (Single Section & Double Stack Oven) (ML-126199 & ML-136015) .....	1
5	00-425689-000G2	Stand (13 In.) W/Casters (SST) (Triple Stack Oven) (ML-126199 & ML-136015) .....	1
6	00-425690-000G2	Extension (12 In. x 18 In.) (Left Side) .....	2
7	00-425691-000G2	Extension (12 In. x 18 In.) (Right Side) .....	2