



## Installation and Maintenance Instructions



### STAINLESS STEEL PRE-RINSE UNIT S-0133 Series

#### Limited Lifetime Warranty (Commercial Applications)

T&S warrants to the original purchaser (other than for purposes of resale) that such product is free from defects in material and workmanship for its limited lifetime. During this warranty period, if the product is found to be defective, T&S shall, at its options, repair and/or replace it. To obtain warranty service, products must be returned to...

T&S Brass and Bronze Works, Inc.  
Attn: Warranty Repair Department  
2 Saddleback Cove  
Travelers Rest, SC 29690

Shipping, freight, insurance, and other transportation charges of the product to T&S and the return of repaired or replaced product to the purchaser are the responsibility of the purchaser. Repair and/or replacement shall be made within a reasonable time after receipt by T&S of the returned product. This warranty does not cover items which have received secondary finishing or have been altered or modified after purchase, or for defects caused by physical abuse to or misuse of the product, or shipment of the products.

Any express warranty not provided herein, and any remedy for Breach of Contract which might arise, is hereby excluded and disclaimed. Any implied warranties of merchantability or fitness for a particular purpose are limited in duration to the warranty period provided on the product. Under no circumstances shall T&S be liable for loss of use or any special consequential costs, expenses or damages.

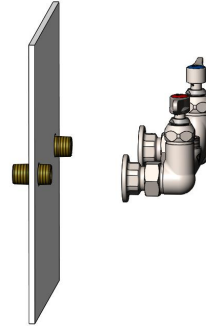
Some states do not allow limitations on how long an implied warranty lasts or the exclusion or limitation of incidental or consequential damages, so the above limitations or exclusions may not apply to you. Specific rights under this warranty and other rights vary from state to state.

#### Attention California Residents:

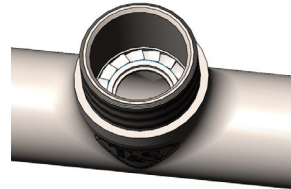
**WARNING** This product can expose you to chemicals including Lead, Chromium (hexavalent compounds) and Phthalates (DEHP) which are known to the State of California to cause cancer and birth defects or other reproductive harm.

For more information go to [www.P65Warnings.ca.gov](http://www.P65Warnings.ca.gov).

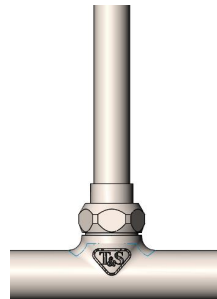
P/N: 098-014497-45ES Rev.2  
DATE: 09-18-23  
DRAWN: TED  
CHECKED: DMH 09-19-23  
APPROVED: JHB 11-02-23



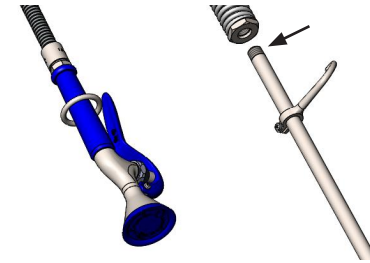
Step 1:  
Apply plumber's putty to backside of body and insert into mounting hole. Line up water supply lines and couplings, attach and tighten with wrench.



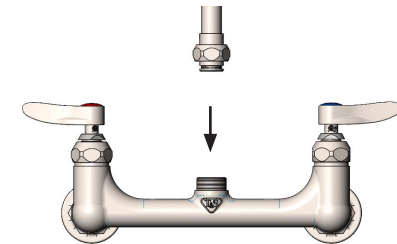
Step 3:  
Make sure that the EasyInstall® locking washer is seated properly inside the faucet body.



Step 5:  
Lock the EasyInstall® locking nut in place and tighten with wrench.



Step 2:  
Apply plumber's tape to top of riser threads and attach to spring assembly. Tighten with wrench.



Step 4:  
Grab riser assembly and lower the EasyInstall® end-fitting into faucet body. Press down until the end-fitting "pops" in.

## Stainless Steel Base Faucet Assemblies

|    |   |              |
|----|---|--------------|
| 1  | Faucet Body Assembly w/ Eterna Cartridges           | S-0230-LN    |
| 2  | Asm, Quarter-Turn Eterna Cartridge, RTC (new style) | S002712-30NS |
|    | Asm, Quarter-Turn Cerama Cartridge, RTC (new style) | S012446-30NS |
| 3  | Cartridge Only, Eterna w/ Spring Checks, RTC        | S012443-30NS |
|    | Cartridge Only, Cerama w/ Check Valves, RTC         | S012394-30NS |
| 4  | Asm, Quarter-Turn Eterna Cartridge, LTC (new style) | S002711-30NS |
|    | Asm, Quarter-Turn Cerama Cartridge, LTC (new style) | S012447-30NS |
| 5  | Cartridge Only, Eterna w/ Spring Checks, LTC        | S012442-30NS |
|    | Cartridge Only, Cerama w/ Check Valves, LTC         | S012395-30NS |
| 6  | Handle, Lever                                       | S001638-30NS |
|    | Handle, Wrist Action                                | S-WH4-NS     |
| 7  | Screw, Handle                                       | 000925-45    |
| 8  | Index, Button - Hot (Red)                           | 001193-19NS  |
| 9  | Index, Button - Cold (Blue)                         | 018506-19NS  |
| 10 | Asm, Coupling Flange                                | S00AA        |
| 11 | Washer, Coupling Nut                                | 001019-45    |
| 12 | Lock Washer, EasyInstall                            | 014200-45    |

### Riser Assembly

|    |   |            |
|----|---|------------|
| 13 | Nipple, 3/8" x 18"                                    | S000369-30 |
| 14 | Swivel Assembly, EasyInstall                          | SEZ-K      |
| 15 | Swivel Piece  | N/A        |
| 16 | O-Ring, Swivel Piece                                  | 001065-45  |
| 17 | Asm, Finger Hook & Screw                              | S004R      |
| 18 | Wall Bracket, 6" (add -B to model # for wall bracket) | S-0109-01  |

### Pre-Rinse Unit Assembly

|    |                                     |            |
|----|-------------------------------------|------------|
| 19 | Spring Body                         | S000821-30 |
| 20 | Spring, Overhead                    | S000888-30 |
| 21 | Asm, Flexible Stainless Steel Hoses | S-0044-H   |
| 22 | Asm, 1.15 GPM Spray Valve           | S-0107     |
|    | Asm, 0.65 GPM Spray Valve           | S-0107-C   |
|    | Asm, 1.07 GPM Spray Valve           | S-0107-J   |
|    | Asm, 1.15 GPM Spray Valve           | S-0107-Y   |

### Spray Valve Assembly

|    |   |            |
|----|---|------------|
| 23 | Washer, Hold Down Assembly              | 010476-45  |
| 24 | Ring, Hold Down Assembly                | S000907-30 |
| 25 | Body, Spray Valve (no handle)           | N/A        |
| 26 | Squeeze Handle (Blue)                   | 011454-45  |
|    | Squeeze Handle (Blue) for S-0107-Y Only | 020793-45  |
| 27 | Nut, Handle                             | 003198-45  |
| 28 | Screw, Handle                           | 003199-45  |
| 29 | Nipple                                  | N/A        |
| 30 | Cup, Spray                              | N/A        |
| 31 | Ring, Sprayhead                         | 011475-45  |
| 32 | Sprayface                               | 017288-45  |
|    | Sprayface for S-0107-Y Only             | 020792-45  |
| 33 | Screw, Sprayface                        | 000913-45  |

### Bonnet Assembly

|    |                                |            |
|----|--------------------------------|------------|
| 34 | Asm, Bonnet                    | S010594-30 |
|    | Asm, Bonnet for S-0107-Y Only  | S019948-30 |
| 35 | Stem                           | S009306-20 |
| 36 | Washer, Seat                   | 012915-45  |
| 37 | Washer, Bonnet Binding         | 001040-45  |
| 38 | Bonnet                         | S000608-30 |
|    | Bonnet for S-0107-Y Only       | S019949-30 |
| 39 | Washer, Bonnet                 | S000974-20 |
| 40 | Stem, Packing                  | 001100-45  |
| 41 | Spring, Bonnet                 | 000895-45  |
| 42 | Push Button                    | S000753-30 |
| 43 | Grease Pack (o-ring lubricant) | 012665-45  |

