



**T&S BRASS AND BRONZE WORKS, INC.**  
 2 Saddleback Cove / P.O. Box 1088  
 Travelers Rest, SC 29690

Model No.

**S-U18-KIT**

Item No.

Travelers Rest, SC: 800-476-4103 • Simi Valley, CA: 800-423-0150 • Fax: 864-834-3518 • www.tsbrass.com

**EVERSTEEL**



**ADA Compliant**

This Space for Architect/Engineer Approval

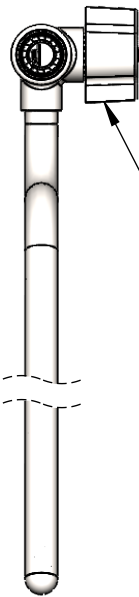
Job Name \_\_\_\_\_ Date \_\_\_\_\_

Model Specified \_\_\_\_\_ Quantity \_\_\_\_\_

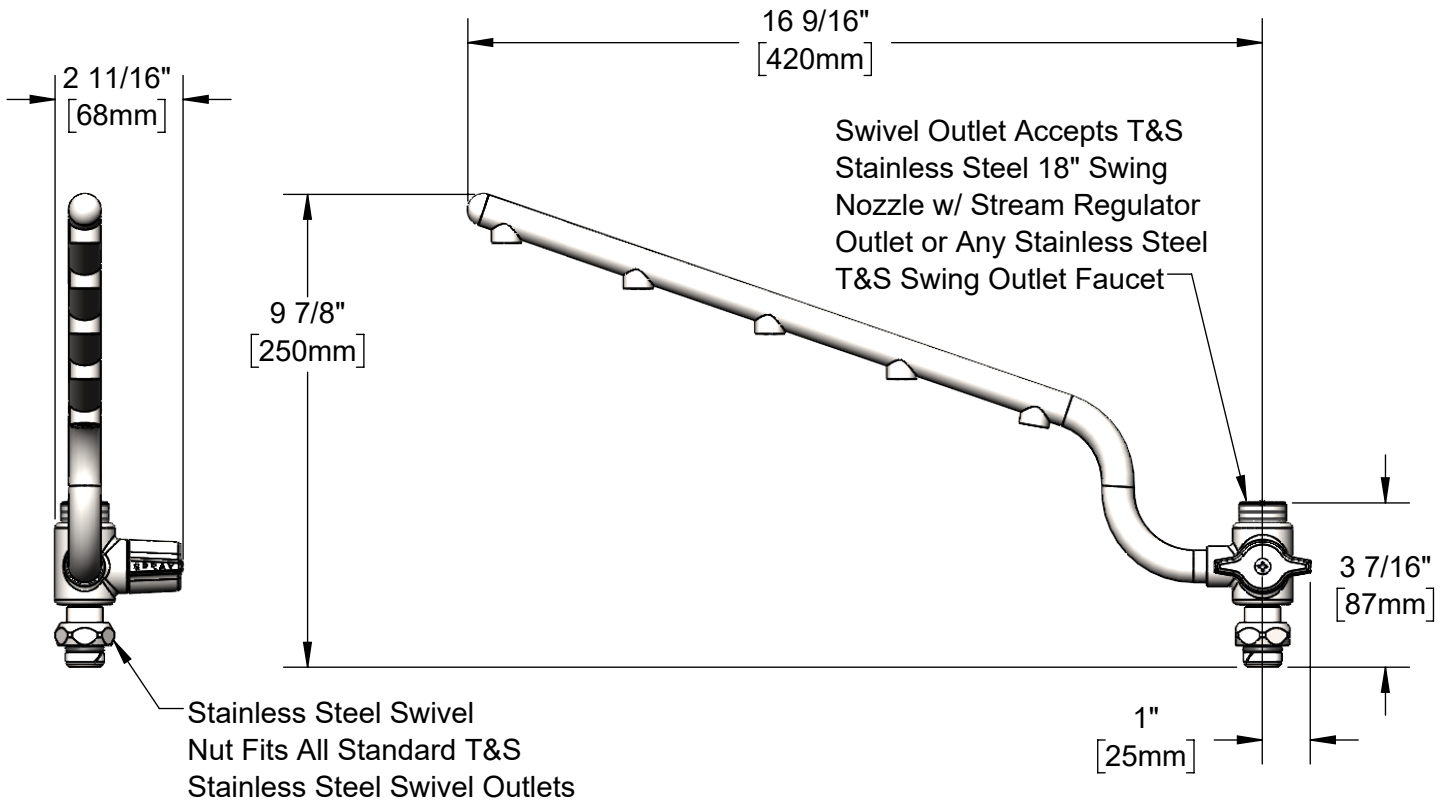
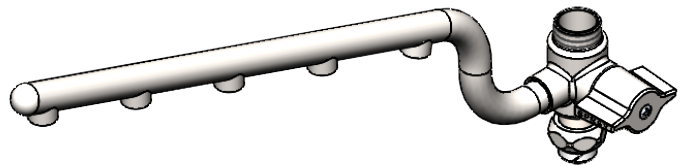
Customer/Wholesaler \_\_\_\_\_

Contractor \_\_\_\_\_

Architect/Engineer \_\_\_\_\_



Stainless Steel 180°  
 Cartridge switches  
 between Spray Arm  
 and Swing Nozzle



Product Specifications:  
 Stainless Steel 1.5 GPM 16" ULTRARINSE Multiple Tip Spray Arm

Product Compliance:  
 ASME A112.181/CSA B125.1  
 NSF 61 - Section 9  
 NSF 372 (Low Lead Content)  
 ANSI A117.1 (ADA)



# T&S BRASS AND BRONZE WORKS, INC.

2 Saddleback Cove / P.O. Box 1088  
Travelers Rest, SC 29690

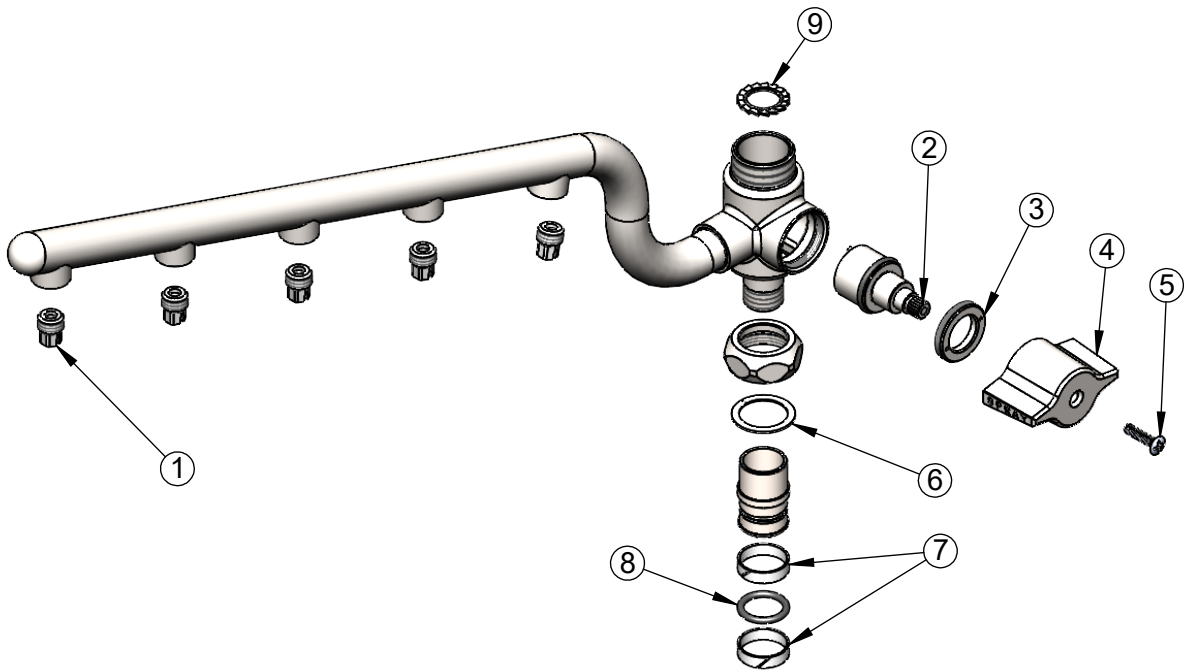
Model No.

**S-U18-KIT**

Item No.

Travelers Rest, SC: 800-476-4103 • Simi Valley, CA: 800-423-0150 • Fax: 864-834-3518 • www.tsbrass.com

ITEM NO.	SALES NO.	DESCRIPTION
1	020666-25	0.3 GPM Spray Tip, SS
2	S020641-20	ULTRARINSE SS Diverter Cartridge
3	S020645-20	SS Diverter Cartridge Nut
4	S020642-30	ULTRARINSE SS Diverter Handle
5	020669-45	M4 Screw, 17mm Long
6	009538-45	Swivel Washer
7	021087-45	Swivel Sleeves (2)
8	001074-45	O-Ring
9	014200-45	Star Washer, Anti-Rotation



**Product Specifications:**

Stainless Steel 1.5 GPM 16" ULTRARINSE Multiple Tip Spray Arm

**Product Compliance:**

ASME A112.181/CSA B125.1  
NSF 61 - Section 9  
NSF 372 (Low Lead Content)  
ANSI A117.1 (ADA)