



T&S BRASS AND BRONZE WORKS, INC.
 2 Saddleback Cove / P.O. Box 1088
 Travelers Rest, SC 29690

Model No.
PG-1DREV

Item No.

Travelers Rest, SC: 800-476-4103 • Simi Valley, CA: 800-423-0150 • Fax: 864-834-3518 • www.tsbrass.com

This Space for Architect/Engineer Approval

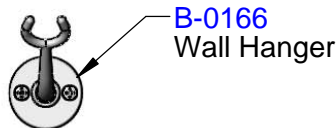
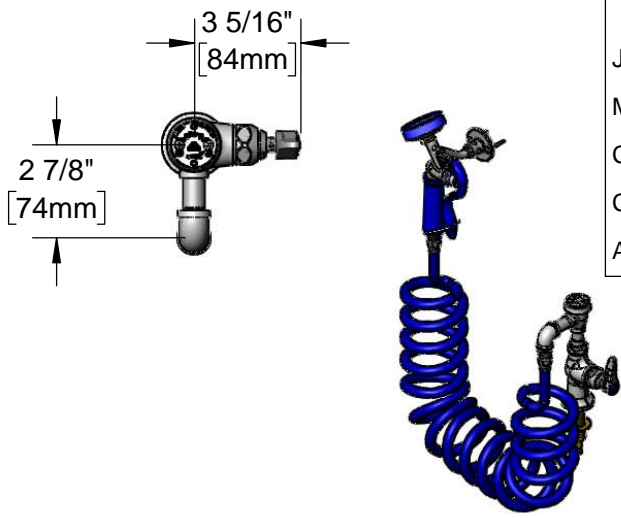
Job Name _____ Date _____

Model Specified _____ Quantity _____

Customer/Wholesaler _____

Contractor _____

Architect/Engineer _____



B-0166
 Wall Hanger

Lightweight Aluminum
 Handle w/ Rubber
 Grip & Hold Down Clip

Atmospheric
 Vacuum Breaker

Items Not Shown
 For Clarity

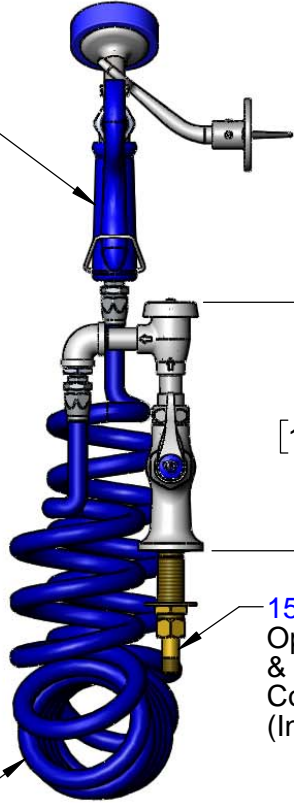
Quarter-Turn Eterna
 Cartridge w/ Spring
 Check & Lever Handle
 w/ Color Coded Index

1 5/8"
 [41mm]
 Maximum
 Thickness

Ø2"
 [51mm]
 Flange

1/2" NPSM Male Inlet

Coiled Polyurethane Hose
 Max Recommended
 Stretch Length of 9 Feet



7 3/4"
 [197mm]

150A
 Optional Tailpiece
 & Nut for 1/4" Male
 Connection
 (Included)

Product Specifications:
 Pet Grooming Unit:
 Single Hole Deck Mount w/ Vacuum Breaker,
 9 Ft Coiled Hose and Angled Aluminum Spray Valve

Product Compliance:
 ASME A112.18.1 / CSA B125.1
 NSF 61 Exempt (Non-Potable)
 ASSE 1001 (VB)



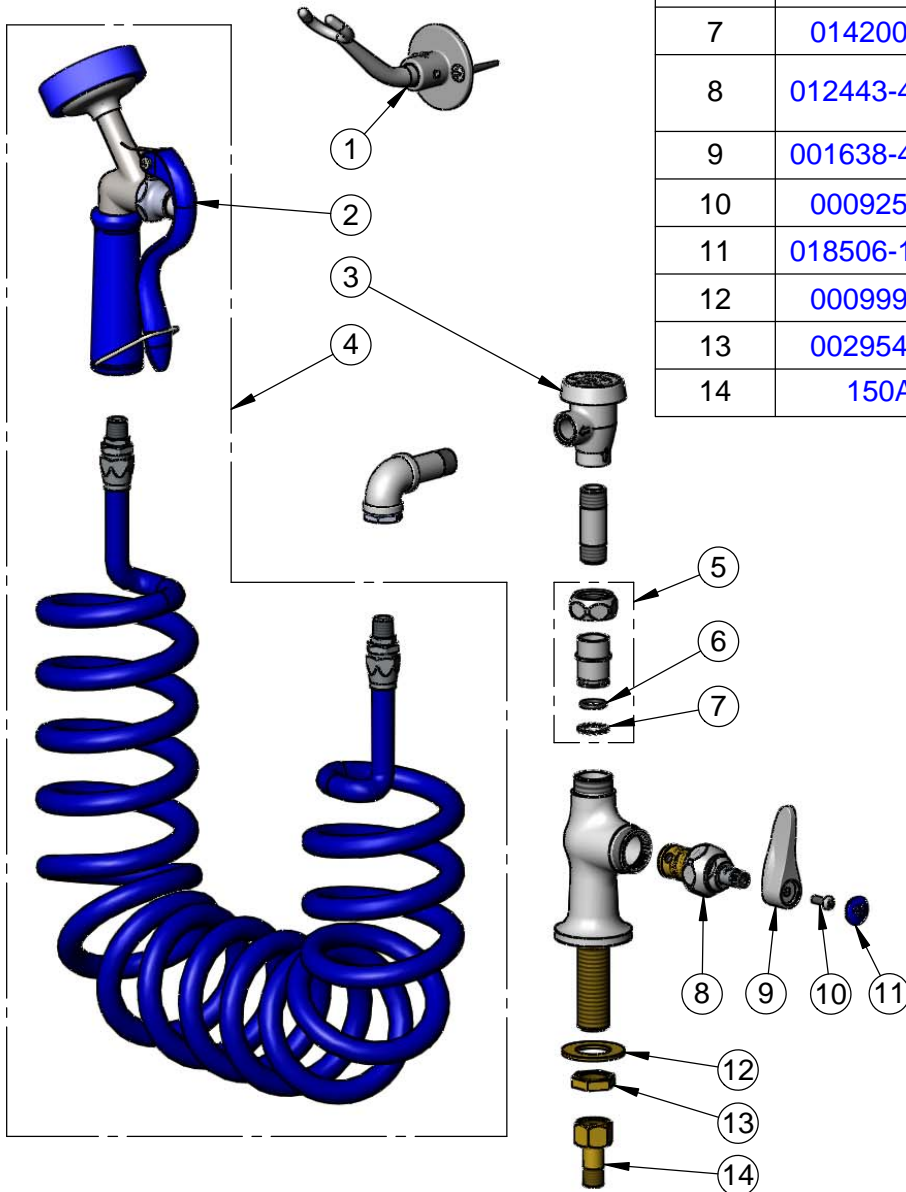
T&S BRASS AND BRONZE WORKS, INC.
 2 Saddleback Cove / P.O. Box 1088
 Travelers Rest, SC 29690

Model No.
PG-1DREV

Item No.

Travelers Rest, SC: 800-476-4103 • Simi Valley, CA: 800-423-0150 • Fax: 864-834-3518 • www.tsbrass.com

ITEM NO.	SALES NO.	DESCRIPTION
1	B-0166	Wall Hook
2	PG-35AV	Aluminum 35° Spray Valve
3	B-0968	3/8" Vacuum Breaker
4	PG-35AV-CH	Spray Valve w/ 9' of Coiled Hose
5	EZ-K	EasyInstall Kit
6	001065-45	O-ring
7	014200-45	Star Washer, Anti-Rotation
8	012443-40NS	Quarter-Turn Eterna Cartridge w/ Spring Check, RTC
9	001638-45NS	Lever Handle (New Style)
10	000925-45	Lab Handle Screw
11	018506-19NS	Blue Button Index, Press-in
12	000999-45	Brass Lock Washer
13	002954-45	Shank Lock Nut
14	150A	Nut & Tailpiece



Product Specifications:
 Pet Grooming Unit:
 Single Hole Deck Mount w/ Vacuum Breaker,
 9 Ft Coiled Hose and Angled Aluminum Spray Valve

Product Compliance:
 ASME A112.18.1 / CSA B125.1
 NSF 61 Exempt (Non-Potable)
 ASSE 1001 (VB)