



**T&S BRASS AND BRONZE WORKS, INC.**

2 Saddleback Cove / P.O. Box 1088  
Travelers Rest, SC 29690



REG. #A2601  
ISO #9001

Model No.

**MPZ-2DLN-06-CRP**

Item No.

Travelers Rest, SC: 800-476-4103 Simi Valley, CA: 800-423-0150 Fax: 864-834-3518 www.tsbrass.com

This Space for Architect/Engineer Approval

Job Name \_\_\_\_\_ Date \_\_\_\_\_

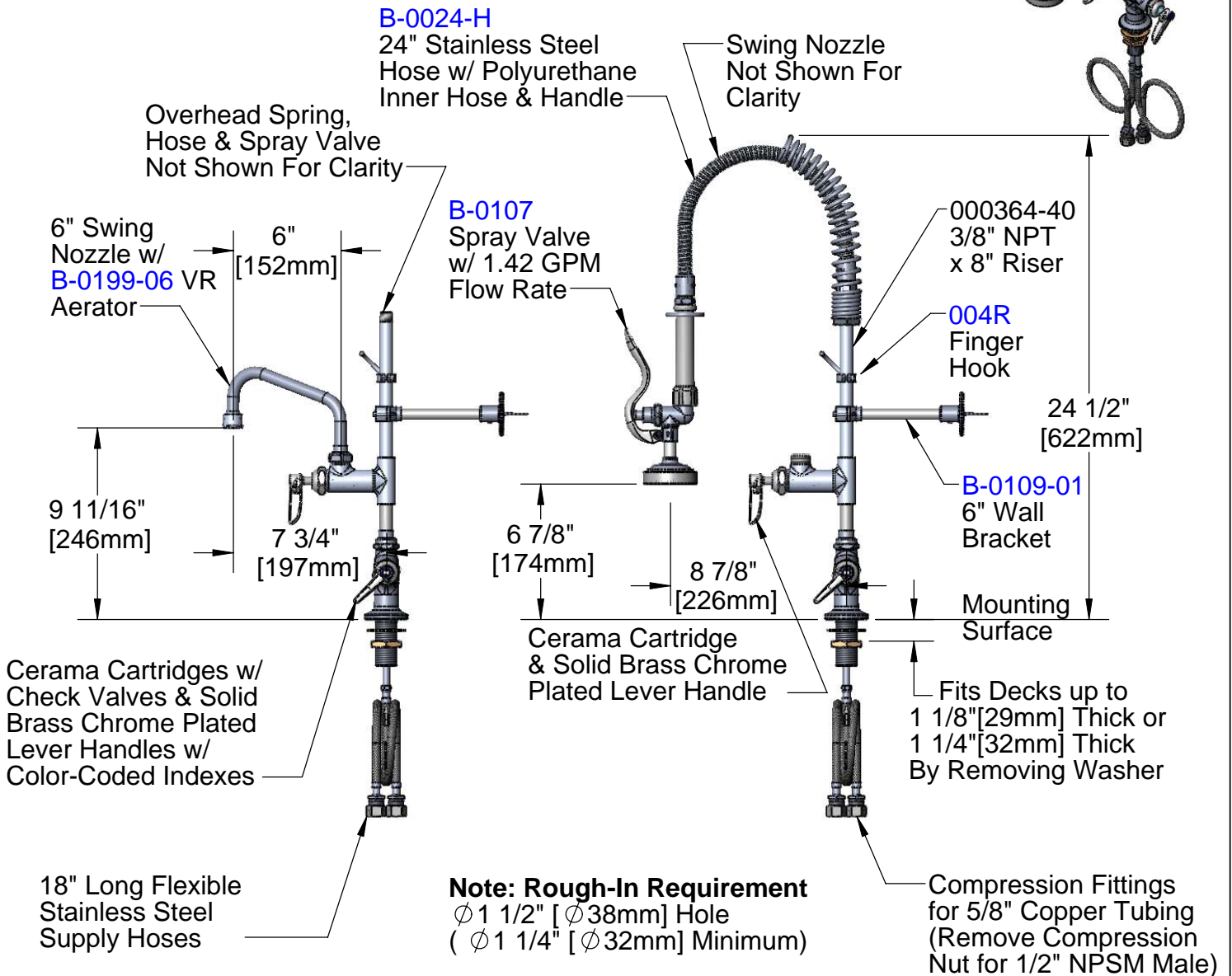
Model Specified \_\_\_\_\_ Quantity \_\_\_\_\_

Customer/Wholesaler \_\_\_\_\_

Contractor \_\_\_\_\_

Architect/Engineer \_\_\_\_\_

**EPAct2005 Compliant  
For Commercial Use Only**



Product Specifications:

Easy Install Pre-Rinse Unit: Single Deck Mount Base Mixing Faucet, Add-On Faucet, 6" Swing Nozzle w/ VR 2.2 GPM Aerator, Compact Spring & Flex Hose, **B-0107** Spray Valve, 6" Wall Bracket, Solid Brass Chrome Plated Lever Handles w/ VR Screws & Ceramas

Drawn DHL	Checked KJG	Approved JHB
Scale: 1:8	Date: 05/11/09	



**T&S BRASS AND BRONZE WORKS, INC.**

2 Saddleback Cove / P.O. Box 1088  
Travelers Rest, SC 29690



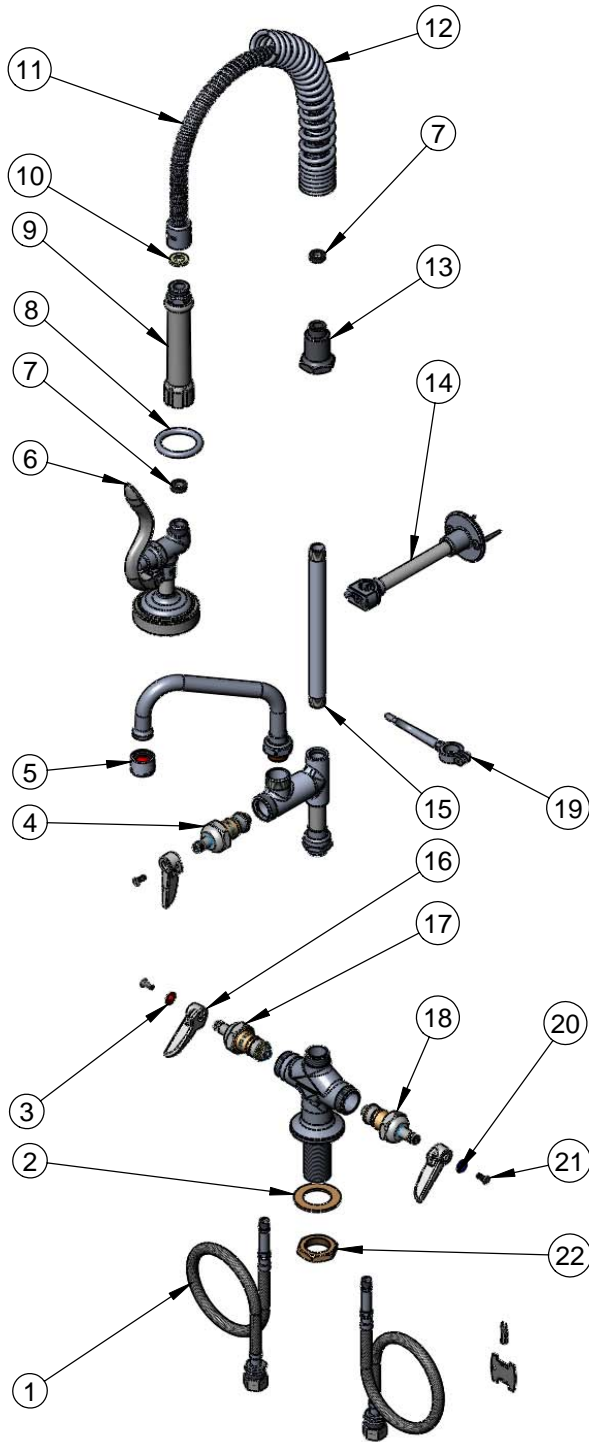
REG. #A2601  
ISO #9001

Model No.



**MPZ-2DLN-06-CRP**

Item No.

Travelers Rest, SC: 800-476-4103 Simi Valley, CA: 800-423-0150 Fax: 864-834-3518 www.tsbrass.com



ITEM NO.	SALES NO.	DESCRIPTION
1	012534-45	Flexible Connector Hose
2	002290-45	Lock Washer
3	001661-45	Red Index-HW
4	011278-25	Ceramic Cartridge RTC
5	B-0199-06	VR Aerator w/ Key
6	B-0107	1.42 GPM Spray Valve Assembly
7	010476-45	#27 Washer
8	000907-45	Spray Valve Hold Down Ring
9	002987-40	Handle Grip
10	001014-45	Washer, B-0100 Hose Barrel
11	B-0024-H2A	24" Flex Hose Less Handle
12	016795-45	Compact Spring
13	000821-40	Spring Body
14	B-0109-01	Bracket Assembly, 6" Wall
15	000364-40	3/8" x 8" Riser
16	010027-40	Solid Brass Chrome Plated Lever Handle
17	012394-25	Ceramic Cartridge, RTC w/ Check Valve
18	012395-25	Ceramic Cartridge, LTC w/ Check Valve
19	004R	Finger Hook Assembly
20	001660-45	Blue Index-CW
21	011755-45	VR Screw
22	000965-45	Lock Nut

 <b>014075-45</b> Handle Vandal Resistant Spanner Bit Supplied	 <b>Q015425-45</b> Aerator Vandal Resistant Key Supplied
--	--

Product Specifications:

Easy Install Pre-Rinse Unit: Single Deck Mount Base Mixing Faucet, Add-On Faucet, 6" Swing Nozzle w/ VR 2.2 GPM Aerator, Compact Spring & Flex Hose, B-0107 Spray Valve, 6" Wall Bracket, Solid Brass Chrome Plated Lever Handles w/ VR Screws & Ceramas

Drawn <b>DHL</b>	Checked <b>KJG</b>	Approved <b>JHB</b>
Scale: <b>NTS</b>		Date: <b>05/11/09</b>