



**T&S BRASS AND BRONZE WORKS, INC.**  
 2 Saddleback Cove / P.O. Box 1088  
 Travelers Rest, SC 29690

Model No.  
**HG-4 Series**

Item No.

Travelers Rest, SC: 800-476-4103 • Simi Valley, CA: 800-423-0150 • Fax: 864-834-3518 • www.tsbrass.com

This Space for Architect/Engineer Approval

Job Name \_\_\_\_\_ Date \_\_\_\_\_

Model Specified \_\_\_\_\_ Quantity \_\_\_\_\_

Customer/Wholesaler \_\_\_\_\_

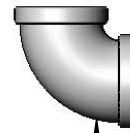
Contractor \_\_\_\_\_

Architect/Engineer \_\_\_\_\_

# SAFE-T-LINK



Coated Gas Connector w/  
 NPT Male Ends & (1)  
 2-Piece Quick Disconnect



90° Elbow



Street El

"L" = Length	1/2" NPT
12"	HG-4C-12
24"	HG-4C-24
36"	HG-4C-36
48"	HG-4C-48
60"	HG-4C-60
72"	HG-4C-72

"L" = Length	3/4" NPT
12"	HG-4D-12
24"	HG-4D-24
36"	HG-4D-36
48"	HG-4D-48
60"	HG-4D-60
72"	HG-4D-72

"L" = Length	1" NPT
12"	HG-4E-12
24"	HG-4E-24
36"	HG-4E-36
48"	HG-4E-48
60"	HG-4E-60
72"	HG-4E-72

"L" = Length	1 1/4" NPT
12"	HG-4F-12
24"	HG-4F-24
36"	HG-4F-36
48"	HG-4F-48
60"	HG-4F-60
72"	HG-4F-72

**HG-4 Series Product Configurator: HG - 4**  -

Ex: HG - 4  -

Gas Hose, 3/4" NPT Male Ends, 36" Length, (1) 2-Piece  
 Quick Disconnect, (1) Elbow, (1) Street El

Product Specifications:  
 Safe-T-Link Gas Appliance Connector: Coated Gas Hose, NPT Male Ends,  
 2-Piece Quick Disconnect, 90° Elbow & Street Elbow

Product Compliance:  
 ANSI Z21.69 / CSA 6.16  
 NSF 2  
 NFPA 54