



T&S BRASS AND BRONZE WORKS, INC.

2 Saddleback Cove / P.O. Box 1088
Travelers Rest, SC 29690

Model No.

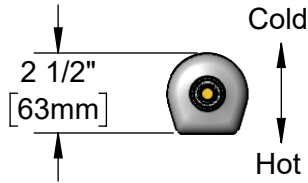
EC-3130-ST-LN

Item No.

Travelers Rest, SC: 800-476-4103 • Simi Valley, CA: 800-423-0150 • Fax: 864-834-3518 • www.tsbrass.com



ADA Compliant



This Space for Architect/Engineer Approval

Job Name _____ Date _____

Model Specified _____ Quantity _____

Customer/Wholesaler _____

Contractor _____

Architect/Engineer _____

Internal Above Deck Electronics w/ Flow Control Setting Switches. Powered w/ 6 VDC Lithium Battery.

Removable Anti-Rotation Pin

Swivel Outlet Accepts Standard T&S Swivel Goosenecks. Rigid Conversion Requires 014200-45 Lock Washer (Included)

Mounting Surface

13/16" [21mm]

1 3/4" [45mm] Maximum Thickness

4 1/8" [105mm]

18" [457mm] Flexible Stainless Steel Supply Hose w/ 1/2" NPSM Swivel End w/ Filter Washer

Check Valve Adapter w/ 3/8" Compression (9/16-24 UN) Inlet

100-240 VAC Adapter w/ 72" [1830mm] Power Cord

Rough-In Requirement:

Ø 1 1/4" [32mm] Mounting Hole

Ø 3/16" [5mm] Anti-Rotation Pin Hole (Optional)

Product Specifications:

Chrome Plated Brass Above Deck Electronics Faucet Less Nozzle, Single Hole Single Temperature Deck Mount, Battery or AC Adapter Powered, Flexible Stainless Steel Supply Hose & 3/8" Compression Inlet

Product Compliance:

ASME A112.18.1 / CSA B125.1
NSF 61 - Section 9
NSF 372 (Low Lead Content)
ANSI A117.1 (ADA)
UL 1951



T&S BRASS AND BRONZE WORKS, INC.

2 Saddleback Cove / P.O. Box 1088
Travelers Rest, SC 29690

Model No.


EC-3130-ST-LN

Item No.

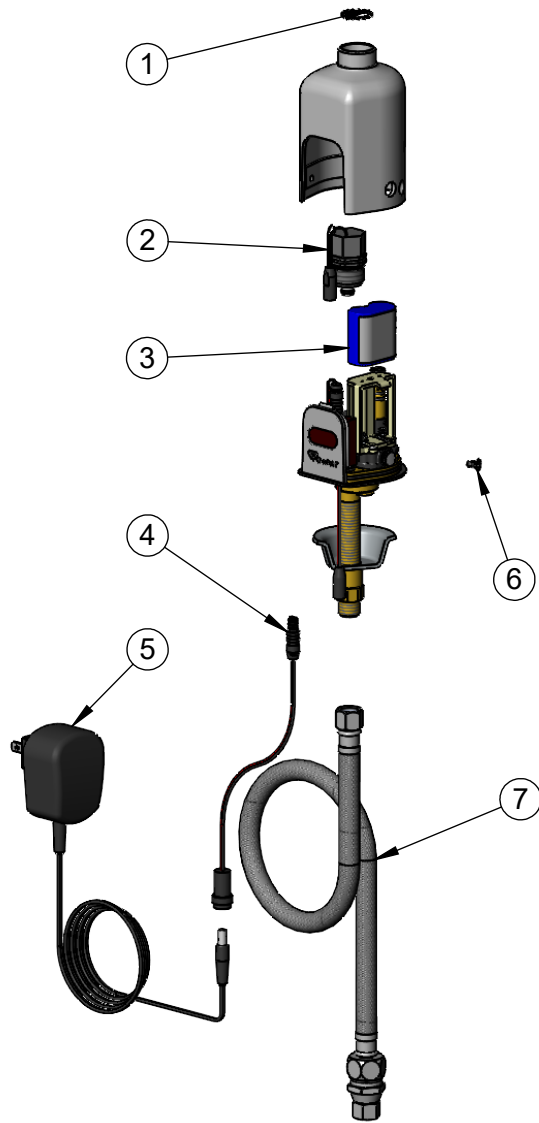
Travelers Rest, SC: 800-476-4103 • Simi Valley, CA: 800-423-0150 • Fax: 864-834-3518 • www.tsbrass.com

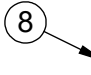
ITEM NO.	SALES NO.	DESCRIPTION
1	014200-45	Star Washer, Anti-Rotation
2	020330-45	Solenoid Valve, M22 x 2 Male Thd
3	019087-45	6VDC Lithium Battery, CR-P2
* 4	020417-45	Aux. Power Connector Cable
* 5	5EF-0002C	AC Adapter - US Plug
6	020270-45	Body Screw w/ L-Key
* 7	018544-45	SS Flex Hose w/ Check Valve Adapter
* 8	020426-40	Body Plug for Pre-Set Temperature

* For Versions Prior to 2024, Consult with T&S Customer Service




A maximum of (8) ChekPoint faucets can be powered by [EC-HARDWIRE](#) ChekPoint Hardwire AC Transformer when connected using [EC-ADEWIRE](#) cables. (Both sold separately)






Optional Plug Replaces Lever Handle When Pre-setting Temperature (Installs from Inside of Body)



020760-45
Sensor Range Set-Up Magnet



[018543-45](#)
Torx T-20 VR L-Key

Flow Control Switches are Located Behind the Sensor.

Switches are set to DEFAULT position:

- Auto Time Out = 15 seconds
- Shut Off Delay = 1 second
- Auto Flush = OFF
- Metering Mode = OFF

Available Water Flow Control Selections:

- Auto Time Out: 15 sec, 30 sec, 45 sec, 60 sec, 3 min, 20 min
- Shut Off Delay: 1 sec, 10 sec, 15 sec, 30 sec
- Auto Flush (30 Seconds After Every 12 Inactive Hours): ON or OFF
- Metering Mode: ON or OFF

Product Specifications:

Chrome Plated Brass Above Deck Electronics Faucet Less Nozzle, Single Hole Single Temperature Deck Mount, Battery or AC Adapter Powered, Flexible Stainless Steel Supply Hose & 3/8" Compression Inlet

Product Compliance:

ASME A112.18.1 / CSA B125.1
NSF 61 - Section 9
NSF 372 (Low Lead Content)
ANSI A117.1 (ADA)
UL 1951