



# T&S BRASS AND BRONZE WORKS, INC.

2 Saddleback Cove / P.O. Box 1088  
Travelers Rest, SC 29690

Model No.

**B-7232-U05WS8TC**

Item No.

Travelers Rest, SC: 800-476-4103 • Simi Valley, CA: 800-423-0150 • Fax: 864-834-3518 • www.tsbrass.com

This Space for Architect/Engineer Approval

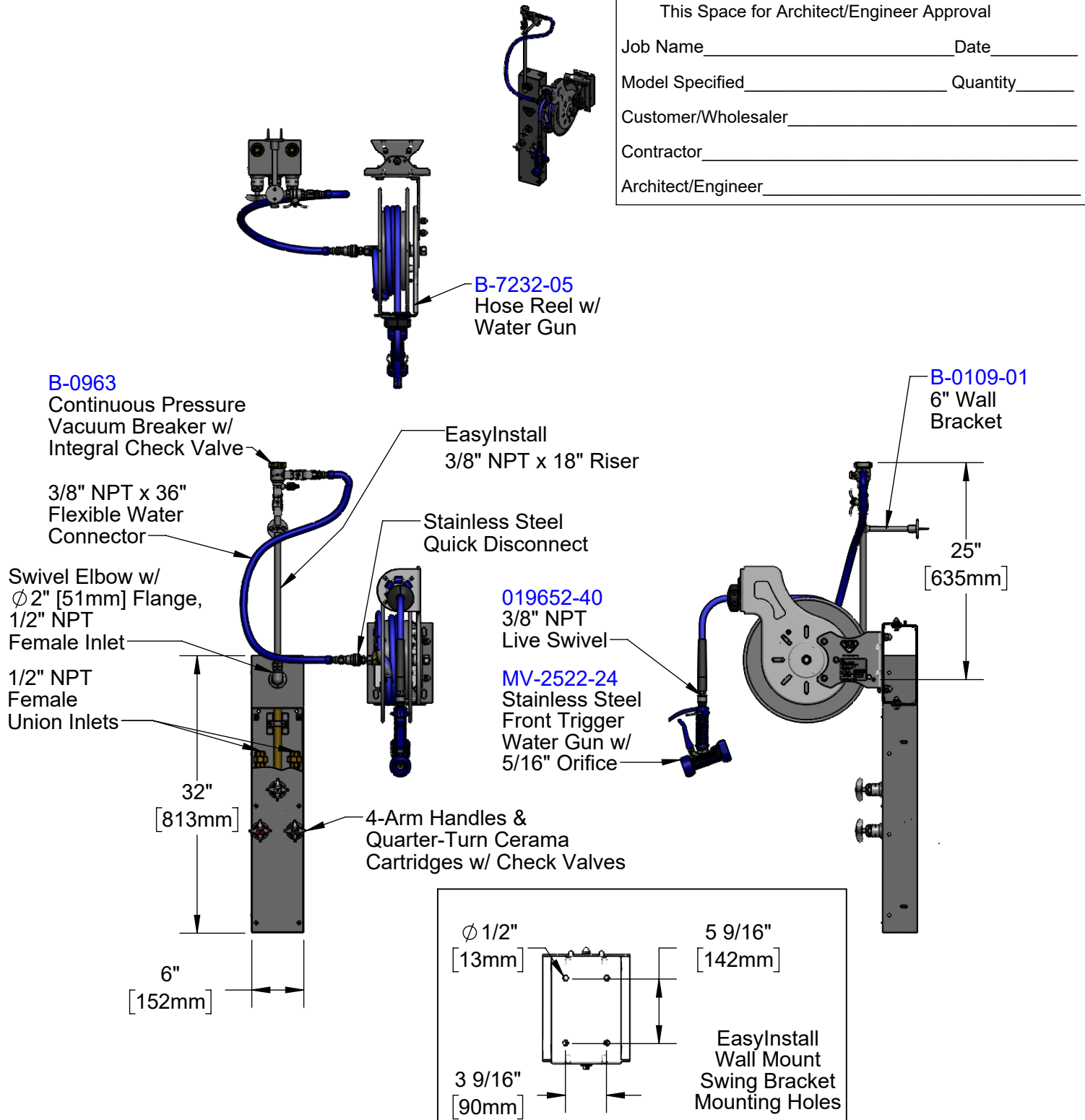
Job Name \_\_\_\_\_ Date \_\_\_\_\_

Model Specified \_\_\_\_\_ Quantity \_\_\_\_\_

Customer/Wholesaler \_\_\_\_\_

Contractor \_\_\_\_\_

Architect/Engineer \_\_\_\_\_



**Product Specifications:**  
Epoxy Coated Hose Reel w/ 35' Hose, High Flow Water Gun w/  
Swivel, EasyInstall Surface Mount SS Hose Reel Cabinet w/ Mixing &  
Control Valve, 4-Arm Handles, Quarter-Turn Ceramas with Check Valves,  
Dual Check Valves, Inlets for Top Supplies, 100 Deg EasyInstall Stainless  
Steel Swing Bracket w/ Mounting Hardware & Hose Reel Connector Kit

**Product Compliance:**  
NSF 61 Exempt (Non-Potable)  
ASSE 1056 (VB)  
2019 DOE PRSV Non-Compliant



# T&S BRASS AND BRONZE WORKS, INC.

2 Saddleback Cove / P.O. Box 1088  
Travelers Rest, SC 29690

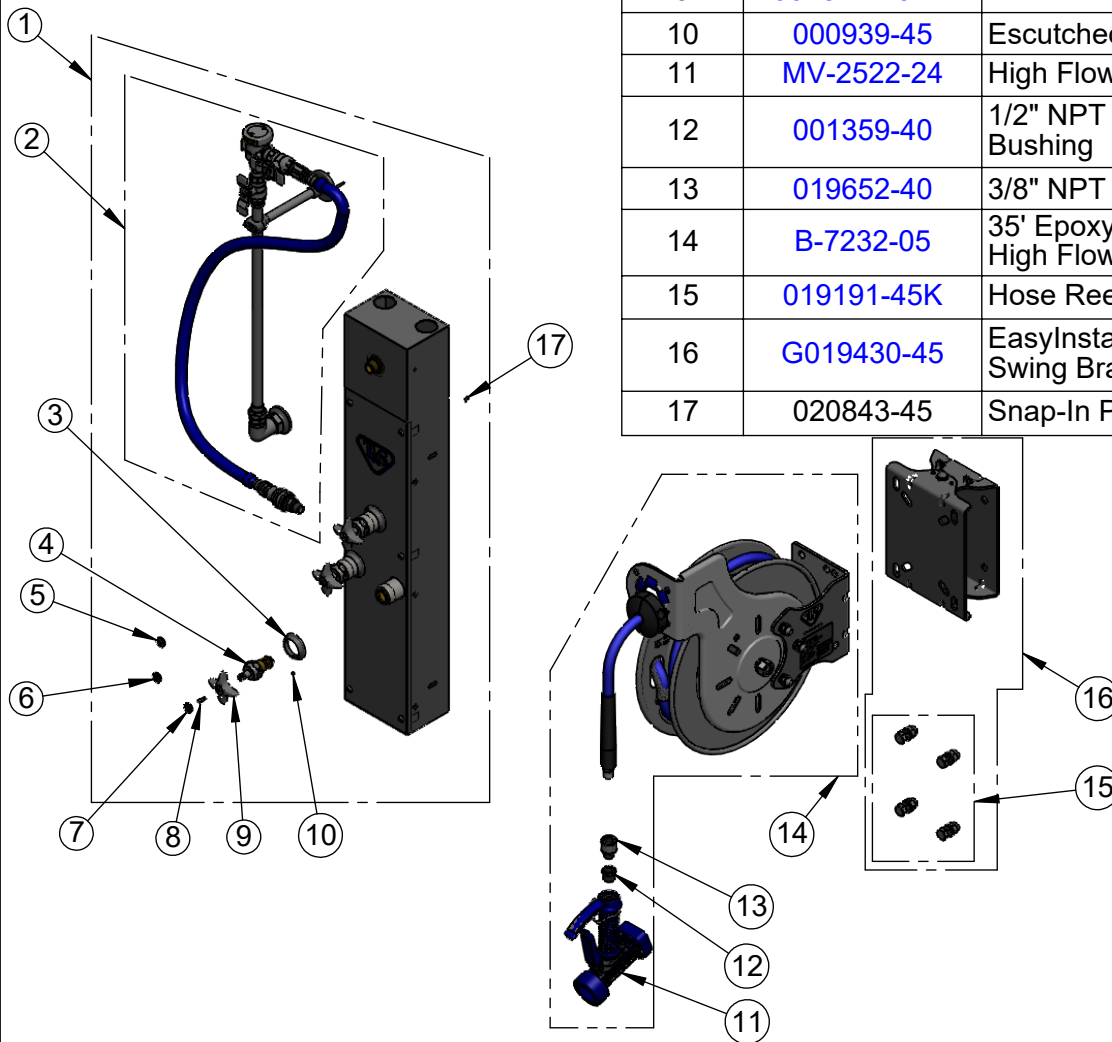
Model No.

**B-7232-U05WS8TC**

Item No.

Travelers Rest, SC: 800-476-4103 • Simi Valley, CA: 800-423-0150 • Fax: 864-834-3518 • www.tsbrass.com

ITEM NO.	SALES NO.	DESCRIPTION
1	B-1460-SMT-CR	EasyInstall Surface Mount Hose Reel Cabinet w/ Top Inlets & Ceramas
2	<a href="#">0RK-SK</a>	Hose Reel Connector Kit
3	020839-40	Narrow Slip Flange w/ Set Screw
4	<a href="#">012394-25NS</a>	Quarter-Turn Cerama Cartridge w/ Check Valve, RTC
5	<a href="#">001205-19NS</a>	White Button Index, Press-In
6	<a href="#">001193-19NS</a>	Red Button Index, Press-in
7	<a href="#">018506-19NS</a>	Blue Button Index, Press-in
8	<a href="#">000925-45</a>	Lab Handle Screw
9	<a href="#">002521-45NS</a>	4-Arm Handle (New Style)
10	<a href="#">000939-45</a>	Escutcheon, Set Screw
11	<a href="#">MV-2522-24</a>	High Flow Water Gun, Blue
12	<a href="#">001359-40</a>	1/2" NPT Male x 3/8" NPT Female Bushing
13	<a href="#">019652-40</a>	3/8" NPT Live Swivel
14	<a href="#">B-7232-05</a>	35' Epoxy Coated Open Hose Reel w/ High Flow Water Gun
15	<a href="#">019191-45K</a>	Hose Reel Mounting Kit
16	<a href="#">G019430-45</a>	EasyInstall Hose Reel Stainless Steel Swing Bracket
17	020843-45	Snap-In Plug, Nickel-Plated (Pack of 10)



**Product Specifications:**

Epoxy Coated Hose Reel w/ 35' Hose, High Flow Water Gun w/ Swivel, EasyInstall Surface Mount SS Hose Reel Cabinet w/ Mixing & Control Valve, 4-Arm Handles, Quarter-Turn Ceramas with Check Valves, Dual Check Valves, Inlets for Top Supplies, 100 Deg EasyInstall Stainless Steel Swing Bracket w/ Mounting Hardware & Hose Reel Connector Kit

**Product Compliance:**

NSF 61 Exempt (Non-Potable)  
ASSE 1056 (VB)  
2019 DOE PRSV Non-Compliant