



# T&S BRASS AND BRONZE WORKS, INC.

2 Saddleback Cove / P.O. Box 1088  
Travelers Rest, SC 29690

Model No.

**B-1344-CRVB102C**

Item No.

Travelers Rest, SC: 800-476-4103 • Simi Valley, CA: 800-423-0150 • Fax: 864-834-3518 • www.tsbrass.com

This Space for Architect/Engineer Approval

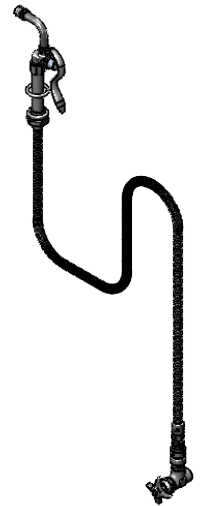
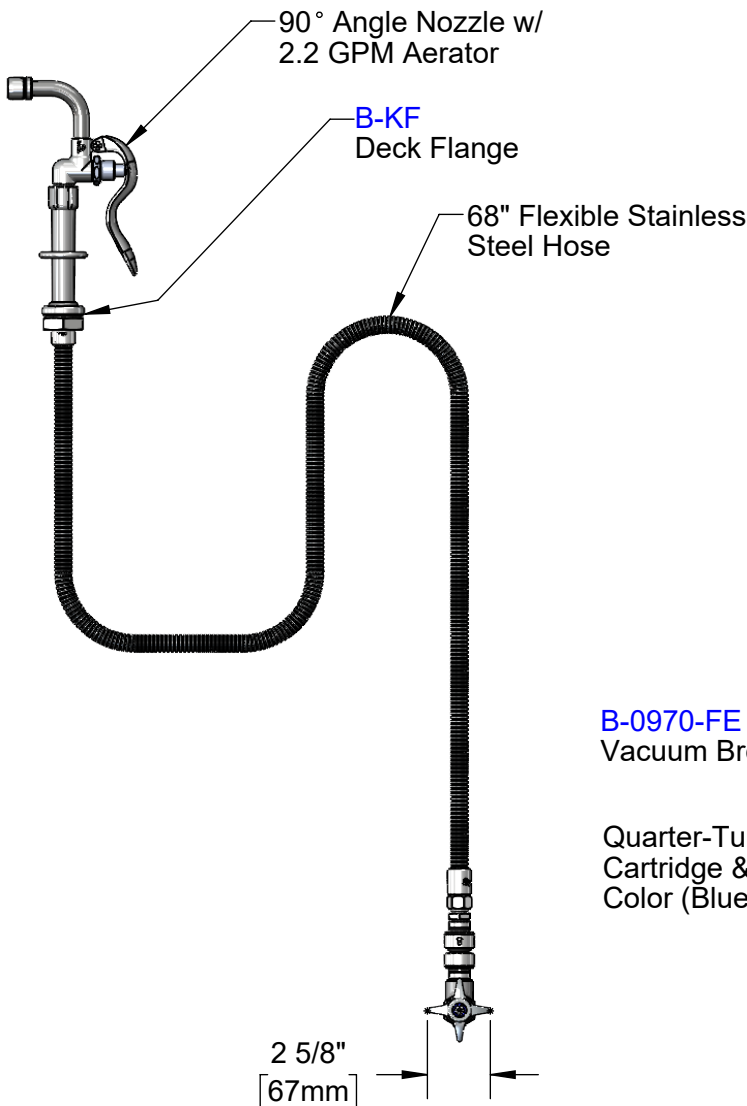
Job Name \_\_\_\_\_ Date \_\_\_\_\_

Model Specified \_\_\_\_\_ Quantity \_\_\_\_\_

Customer/Wholesaler \_\_\_\_\_

Contractor \_\_\_\_\_

Architect/Engineer \_\_\_\_\_



**B-0970-FE**

Vacuum Breaker

Quarter-Turn Cerama Cartridge & 4-Arm Handle, Color (Blue) Index

1/2" NPT Female Inlet

3 15/16" [101mm]

1 1/8" [29mm]

Rough-In Requirement:

Deck Flange: (1)  $\phi$  1 9/16" [40mm] Mounting Hole

Product Specifications:

Angle Stop w/ Quarter-Turn Cerama Cartridge, 4-Arm Handle, Vacuum Breaker, 90° Angle Spray Nozzle, 2.2 GPM Aerator, 68" Flexible Stainless Steel Hose & 1/2" NPT Female Inlet

Product Compliance:

ASME A112.18.1 / CSA B125.1  
NSF 61 - Section 9  
NSF 372 (Low Lead Content)  
2019 DOE PRSV Non-Compliant  
Product Not Designed/Intended for Commercial Warewashing in North America



# T&S BRASS AND BRONZE WORKS, INC.

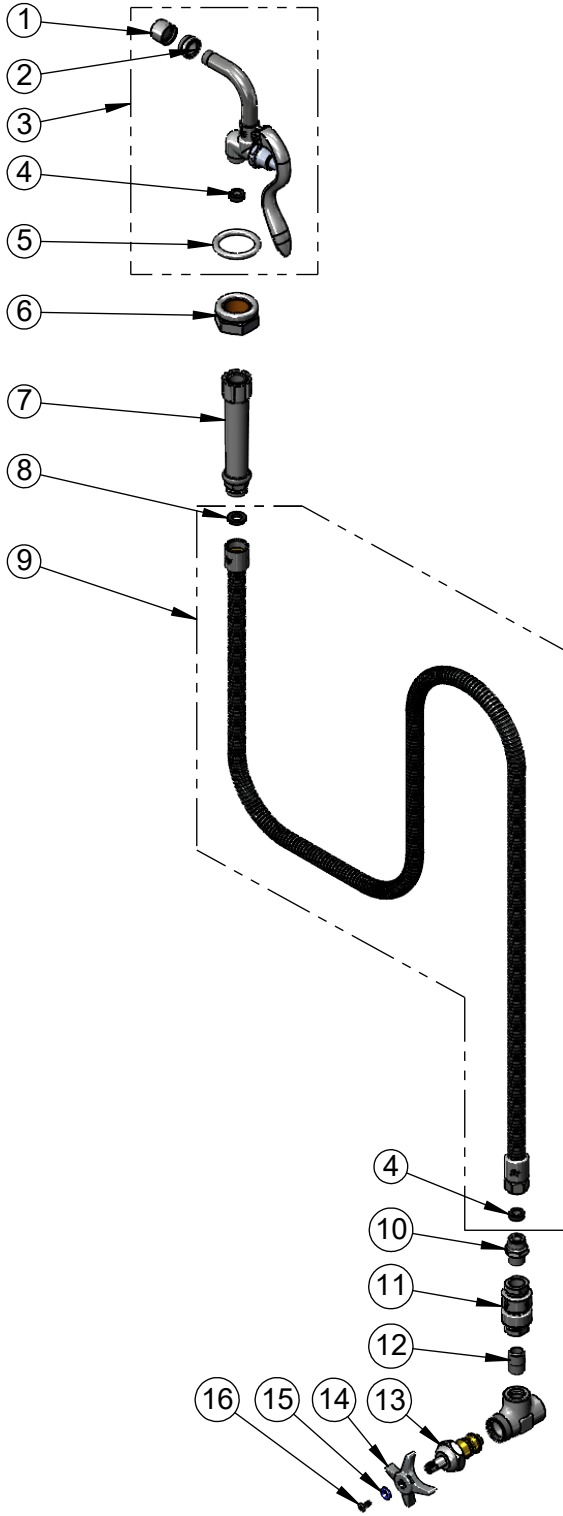
2 Saddleback Cove / P.O. Box 1088  
Travelers Rest, SC 29690

Model No.

**B-1344-CRVB102C**

Item No.

Travelers Rest, SC: 800-476-4103 • Simi Valley, CA: 800-423-0150 • Fax: 864-834-3518 • www.tsbrass.com



ITEM NO.	SALES NO.	DESCRIPTION
1	B-0199-01	2.2 GPM Aerator, 55/64-27 UN Female
2	000554-25	Adapter 55/64-27 Male Thread x 5/8-27 Female Thread
3	009937-40	90° Angle Spray Nozzle w/ 2.2 GPM Aerator
4	010476-45	#27 Washer
5	000907-45	Spray Valve Hold Down Ring
6	B-KF	Protective Flange
7	002987-40	Grip Handle (Gray)
8	001014-45	Washer, Hose Barrel
9	B-0068-H2A	68" Flexible Stainless Steel Hose, Less Handle
10	053A	Adapter, 3/8" NPT x 3/4-14UN
11	B-0970-FE	3/8" NPT Vacuum Breaker
12	002535-25	3/8" Close Nipple
13	012394-25	Quarter-Turn Cerama Cartridge, RTC
14	002521-45	4-Arm Handle
15	001660-45	Blue Index-CW
16	000922-45	Lever Handle Screw

**Product Specifications:**

Angle Stop w/ Quarter-Turn Cerama Cartridge, 4-Arm Handle, Vacuum Breaker, 90° Angle Spray Nozzle, 2.2 GPM Aerator, 68" Flexible Stainless Steel Hose & 1/2" NPT Female Inlet

**Product Compliance:**

ASME A112.18.1 / CSA B125.1  
NSF 61 - Section 9  
NSF 372 (Low Lead Content)  
2019 DOE PRSV Non-Compliant  
Product Not Designed/Intended for  
Commercial Warewashing in North America