



T&S BRASS AND BRONZE WORKS, INC.

2 Saddleback Cove / P.O. Box 1088
Travelers Rest, SC 29690

Model No.

B-0686

Item No.

Travelers Rest, SC: 800-476-4103 • Simi Valley, CA: 800-423-0150 • Fax: 864-834-3518 • www.tsbrass.com

This Space for Architect/Engineer Approval

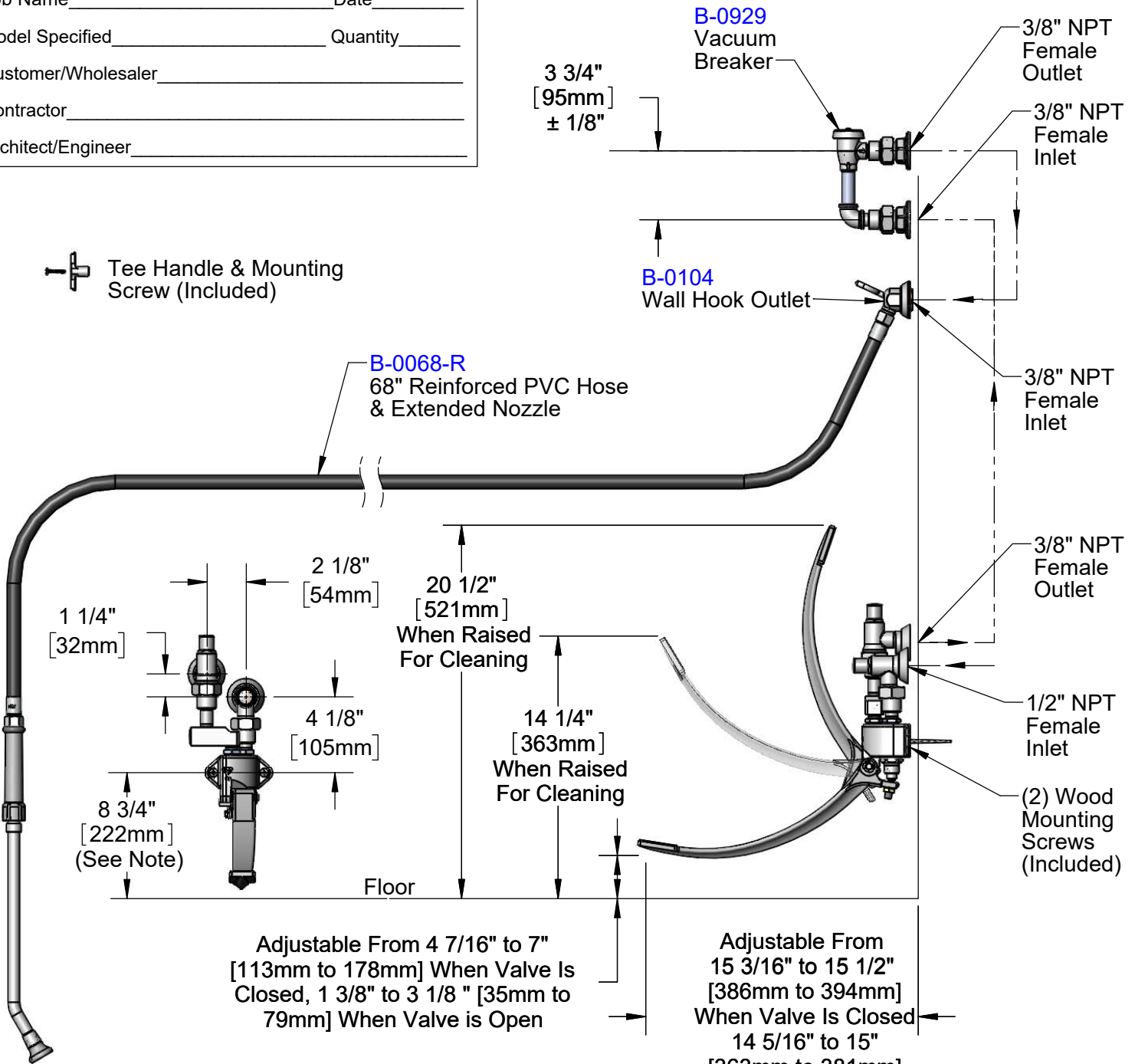
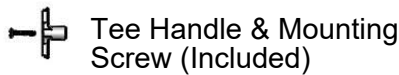
Job Name _____ Date _____

Model Specified _____ Quantity _____

Customer/Wholesaler _____

Contractor _____

Architect/Engineer _____



Note: All Pedal Position Dimensions are Based on Minimum Recommended Mounting Height of 8 3/4" [222mm] Above Finished Floors.

Product Specifications:

Bedpan Washer, Foot Valve Control, Integral Loose Key Stops, Vacuum Breaker & Extended Nozzle w/ 2.2 GPM Rosespray

Product Compliance:

ASME A112.18.1 / CSA B125.1
ASSE 1001 (VB)



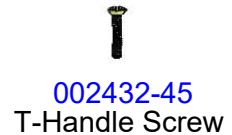
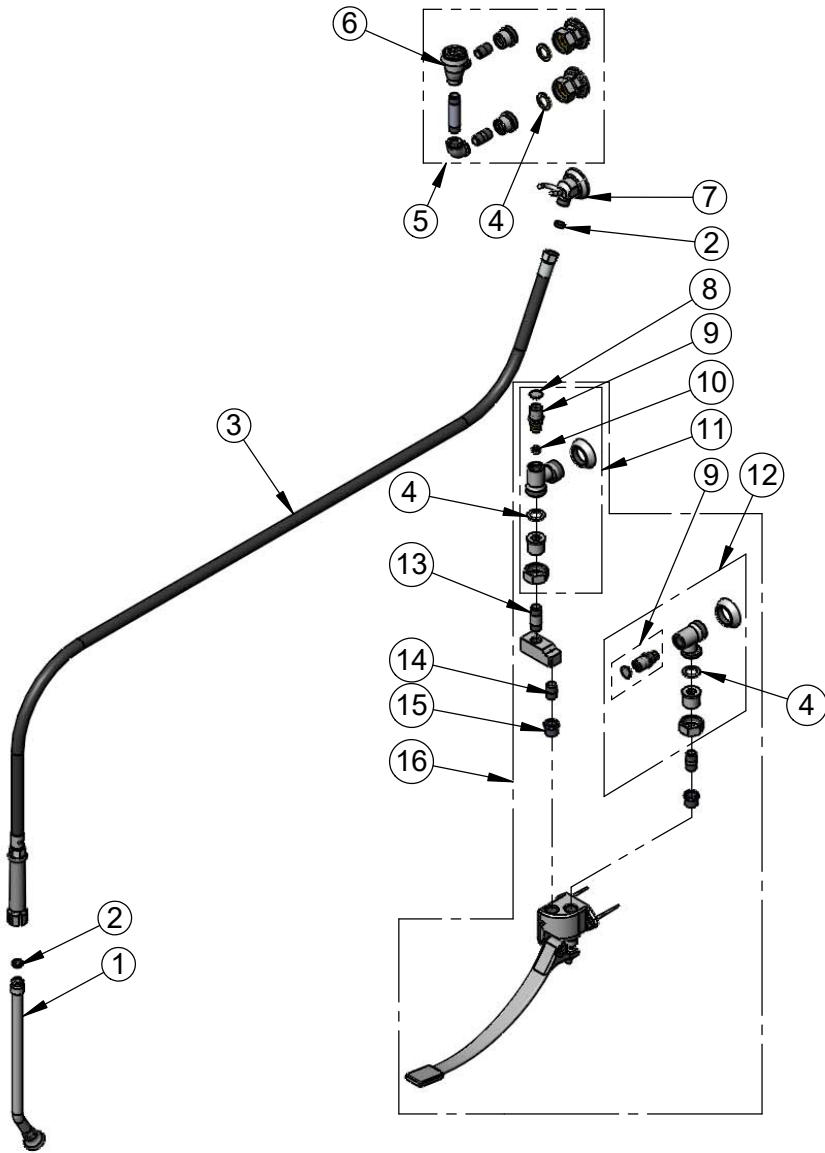
T&S BRASS AND BRONZE WORKS, INC.
 2 Saddleback Cove / P.O. Box 1088
 Travelers Rest, SC 29690

Model No.
B-0686

Item No.

Travelers Rest, SC: 800-476-4103 • Simi Valley, CA: 800-423-0150 • Fax: 864-834-3518 • www.tsbrass.com

| ITEM NO. | SALES NO. | DESCRIPTION |
|----------|-----------|---|
| 1 | 002861-40 | Extended Spray Wand |
| 2 | 010476-45 | #27 Washer |
| 3 | B-0068-R | 68" Reinforced PVC Hose |
| 4 | 001019-45 | Coupling Nut Washer |
| 5 | B-0929 | Atmospheric Vacuum Breaker |
| 6 | B-0968 | 3/8" NPT Vacuum Breaker |
| 7 | B-0104 | Wall Hook, 3/4-14 UN Male Outlet |
| 8 | 001605-45 | Cap |
| 9 | 166A | Service Stop Spindle w/ Tee Handle & Screw |
| 10 | 000763-20 | Seat |
| 11 | B-1355 | Loose Key 3/8" NPT Angle Stop w/ Tee Handle & Screw |
| 12 | B-1351 | Loose Key 1/2" NPT Angle Stop w/ Tee Handle & Screw |
| 13 | 000356-45 | Nipple, 3/8" NPT x 1 3/4" |
| 14 | 002535-25 | 3/8" Close Nipple |
| 15 | 001359-40 | Hex Bushing, 1/2" NPT Male x 3/8" NPT Female |
| 16 | B-0508-01 | Wall Mount Single Pedal Valve w/ Angle Stops |



Product Specifications:
 Bedpan Washer, Foot Valve Control, Integral Loose Key Stops, Vacuum Breaker & Extended Nozzle w/ 2.2 GPM Rosespray

Product Compliance:
 ASME A112.18.1 / CSA B125.1
 ASSE 1001 (VB)