



T&S BRASS AND BRONZE WORKS, INC.
 2 Saddleback Cove / P.O. Box 1088
 Travelers Rest, SC 29690

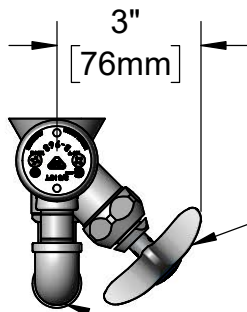
Model No.
B-0678

Item No.

Travelers Rest, SC: 800-476-4103 • Simi Valley, CA: 800-423-0150 • Fax: 864-834-3518 • www.tsbrass.com

This Space for Architect/Engineer Approval

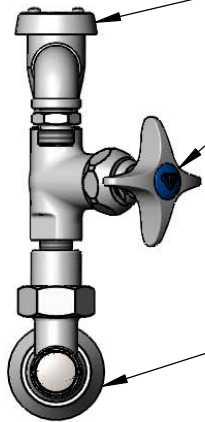
Job Name _____ Date _____
 Model Specified _____ Quantity _____
 Customer/Wholesaler _____
 Contractor _____
 Architect/Engineer _____



68" Reinforced PVC
 Hose & Extended
 Spray Valve

Control Valve
 Rotated 45° to
 Avoid Wall

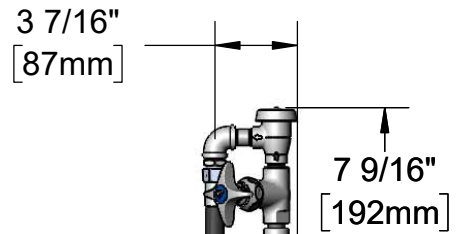
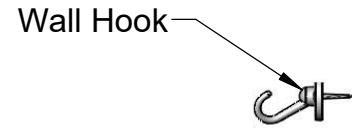
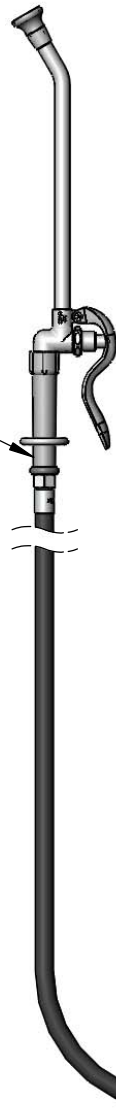
Items Not Shown
 For Clarity



B-0968
 3/8" NPT
 Vacuum Breaker

Quarter-Turn Eterna
 Cartridge w/ Spring
 Check & 4-Arm Handle
 w/ Color Coded Index

Ø 2" [51mm]
 Flange w/
 1/2" NPT
 Female Inlet



Loose Key Stop
 Mounting Surface

Side View Scale: 1:8

Product Specifications:

Bed Pan Washer, Loose Key Angle Stop, Vacuum Breaker, Quarter-Turn Eterna Cartridge w/ Spring Check, 4-Arm Handle & Self-Closing Valve w/ Extended Spray Outlet w/ 2.2 GPM Rosespray

Product Compliance:

ASME A112.18.1 / CSA B125.1
 ASSE 1001 (VB)
 2019 DOE PRSV Non-Compliant



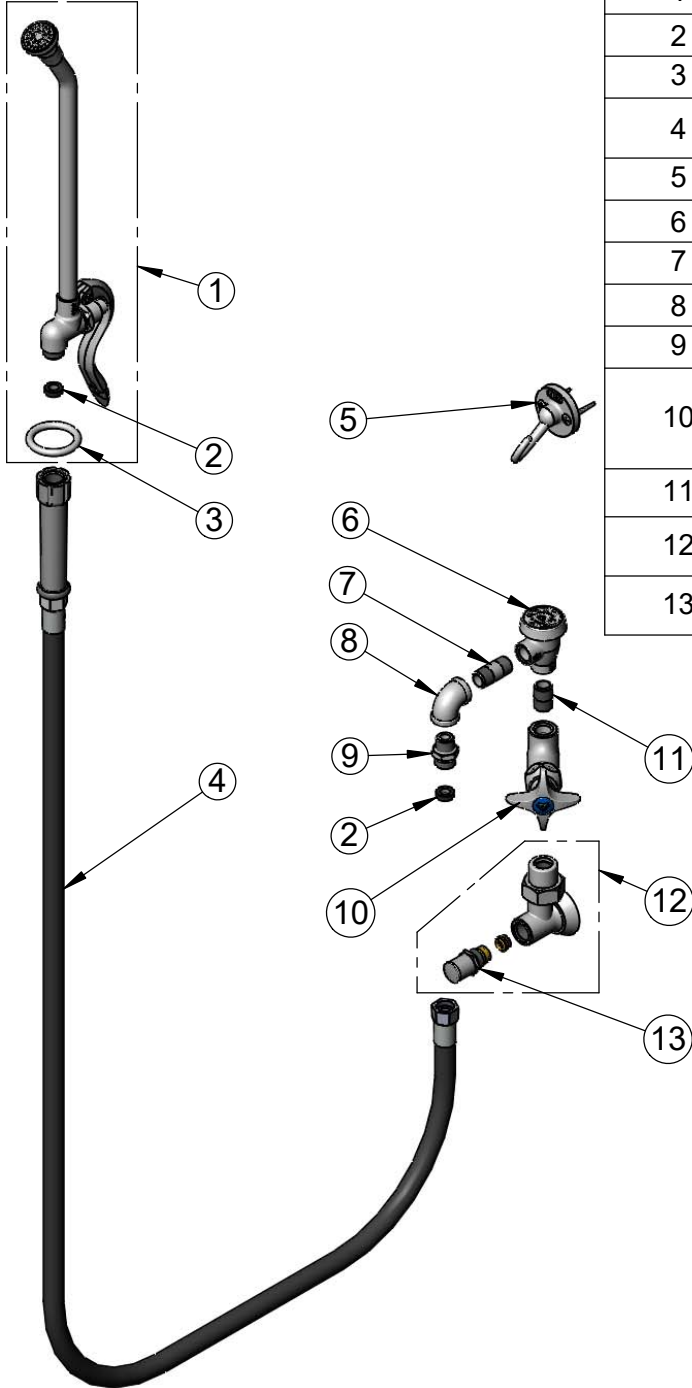
T&S BRASS AND BRONZE WORKS, INC.
 2 Saddleback Cove / P.O. Box 1088
 Travelers Rest, SC 29690

Model No.
B-0678

Item No.

Travelers Rest, SC: 800-476-4103 • Simi Valley, CA: 800-423-0150 • Fax: 864-834-3518 • www.tsbrass.com

ITEM NO.	SALES NO.	DESCRIPTION
1	002865-40	Extended Spray Wand
2	010476-45	#27 Washer
3	000907-45	Spray Valve Hold Down Ring
4	B-0068-R	68" Reinforced PVC Hose w/ Handle
5	B-0104-D	Dummy Wall Hook Bracket
6	B-0968	3/8" NPT Vacuum Breaker
7	002341-40	Nipple, 3/8" NPT x 1 1/2"
8	001355-40	Elbow, 3/8 NPT
9	053A	Adapter, 3/8" NPT x 3/4-14UN
10	007010-40NS	Straight Stop w/ Quarter-Turn Eterna Cartridge w/ Spring Check, 4-Arm Handle & Blue Index
11	002535-25	3/8" Close Nipple
12	B-1351	Loose Key 1/2" NPT Angle Stop w/ Tee Handle & Screw
13	166A	Service Stop Spindle w/ Cap, Handle & Screw



Product Specifications:
 Bed Pan Washer, Loose Key Angle Stop, Vacuum Breaker, Quarter-Turn Eterna Cartridge w/ Spring Check, 4-Arm Handle & Self-Closing Valve w/ Extended Spray Outlet w/ 2.2 GPM Rosespray

Product Compliance:
 ASME A112.18.1 / CSA B125.1
 ASSE 1001 (VB)
 2019 DOE PRSV Non-Compliant