



T&S BRASS AND BRONZE WORKS, INC.
 2 Saddleback Cove / P.O. Box 1088
 Travelers Rest, SC 29690

Model No.
B-0677

Item No.

Travelers Rest, SC: 800-476-4103 • Simi Valley, CA: 800-423-0150 • Fax: 864-834-3518 • www.tsbrass.com

This Space for Architect/Engineer Approval

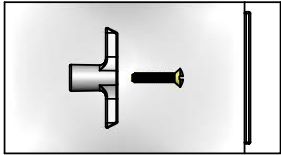
Job Name _____ Date _____

Model Specified _____ Quantity _____

Customer/Wholesaler _____

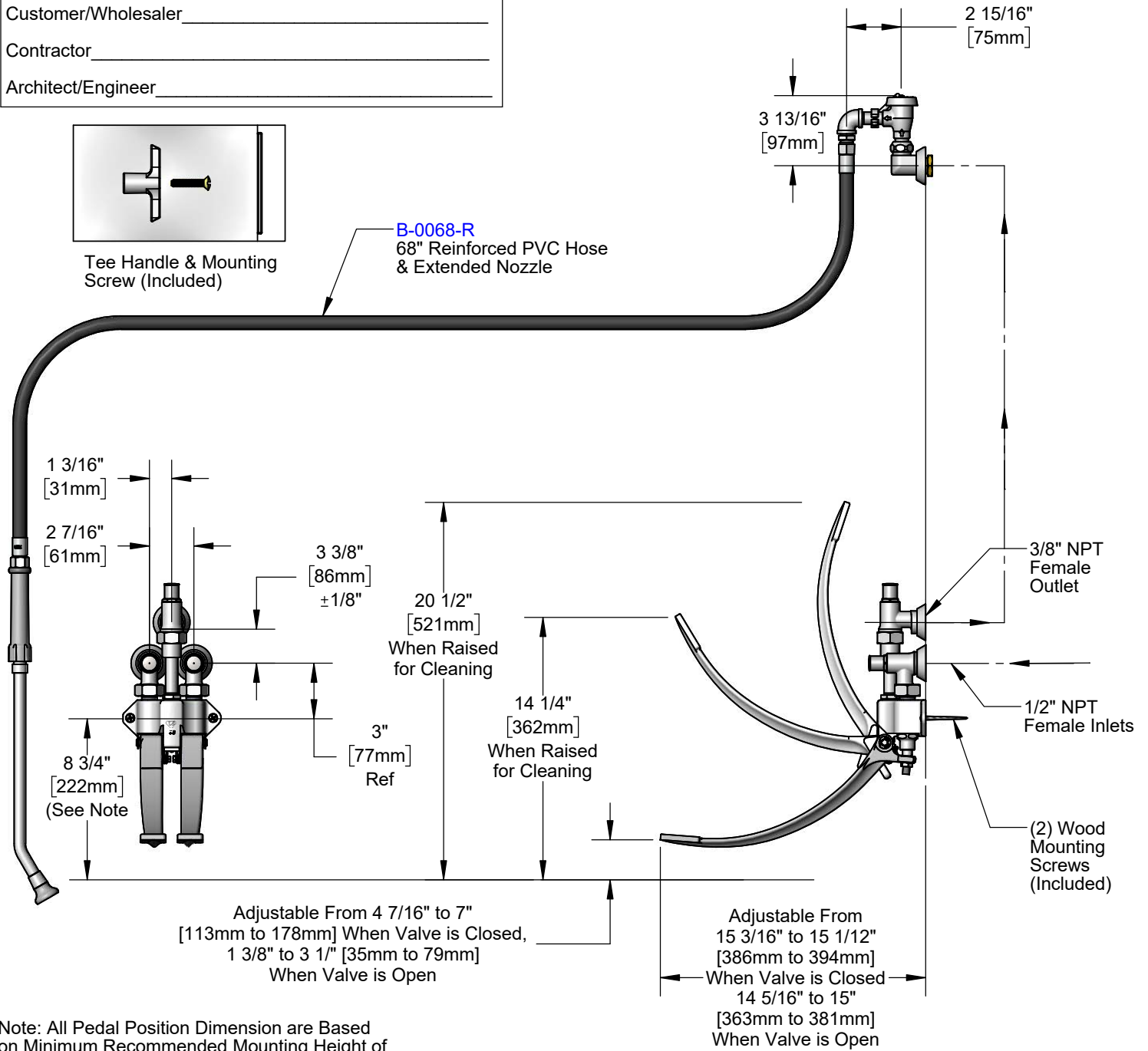
Contractor _____

Architect/Engineer _____



Tee Handle & Mounting Screw (Included)

B-0068-R
 68" Reinforced PVC Hose
 & Extended Nozzle



Note: All Pedal Position Dimension are Based on Minimum Recommended Mounting Height of 8 3/4" [222mm] Above Finished Floors.

Product Specifications:
Bedpan Washer, Foot Valve Control, Integral Loose Key Stops, Vacuum Breaker & Extended Nozzle

Product Compliance:
 ASME A112.18.1 / CSA B125.1
 ASSE 1001 (VB)



T&S BRASS AND BRONZE WORKS, INC.

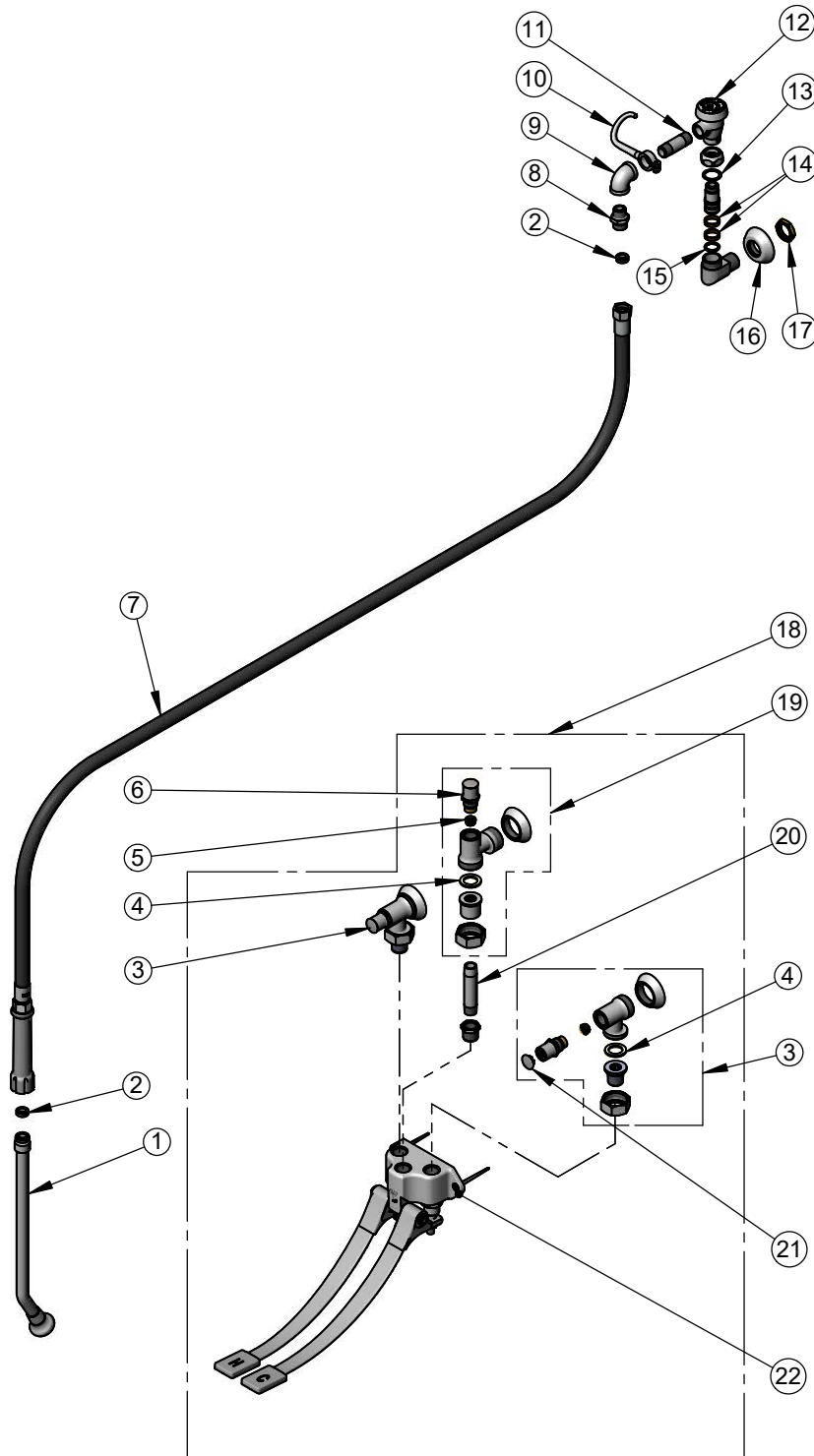
2 Saddleback Cove / P.O. Box 1088
Travelers Rest, SC 29690

Model No.

B-0677

Item No.

Travelers Rest, SC: 800-476-4103 • Simi Valley, CA: 800-423-0150 • Fax: 864-834-3518 • www.tsbrass.com



ITEM NO.	SALES NO.	DESCRIPTION
1	002861-40	Bed Pan Spray Nozzle
2	010476-45	#27 Washer
3	B-1350	Loose Key 1/2" NPT Angle Stop w/ Tee Handle
4	001019-45	Coupling Nut Washer
5	000763-20	Seat
6	166A	Service Stop Spindle w/ Tee Handle & Screw
7	B-0068-R	68" Reinforced PVC Hose
8	053A	Adapter, 3/8" NPT Male
9	001355-40	Elbow, 3/8 NPT
10	004R	Finger Hook
11	000357-40	Nipple, 3/8" NPT x 2"
12	B-0968	3/8" NPT Vacuum Breaker
13	009538-45	Swivel Washer
14	011429-45	Swivel Sleeves (2)
15	001074-45	O-Ring
16	000023-40	Adjustable Wall Flange
17	000713-20	Lock Nut
18	B-0504-01	Wall Mount Double Pedal Valve w/ Angle Stops
19	B-1355	Loose Key 3/8" NPT Angle Stop w/ Tee Handle & Screw
20	010092-40	Nipple, 3/8" NPT x 4 1/4" Long
21	001605-45	Cap
22	B-0504	Wall Mount Double Pedal Valve



002432-45
T-Handle Screw



001802-45
T-Handle

Product Specifications:

Bedpan Washer, Foot Valve Control, Integral Loose Key Stops, Vacuum Breaker & Extended Nozzle

Product Compliance:

ASME A112.18.1 / CSA B125.1
ASSE 1001 (VB)