



T&S BRASS AND BRONZE WORKS, INC.

2 Saddleback Cove / P.O. Box 1088
Travelers Rest, SC 29690

Model No.

B-0196

Item No.

Travelers Rest, SC: 800-476-4103 • Simi Valley, CA: 800-423-0150 • Fax: 864-834-3518 • www.tsbrass.com

This Space for Architect/Engineer Approval

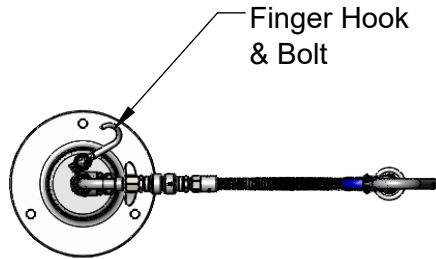
Job Name _____ Date _____

Model Specified _____ Quantity _____

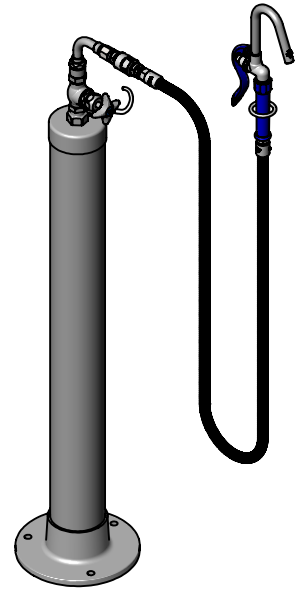
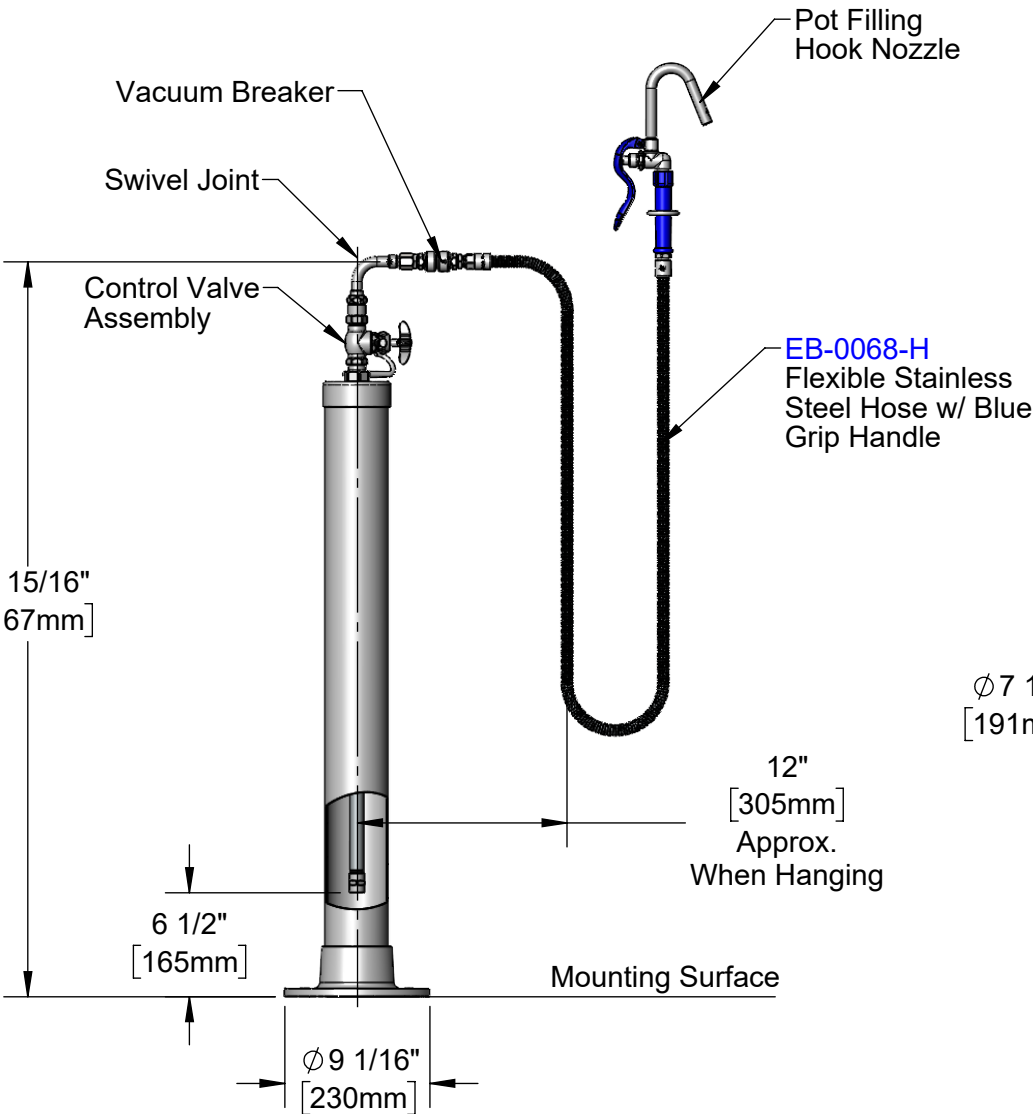
Customer/Wholesaler _____

Contractor _____

Architect/Engineer _____



Finger Hook & Bolt



45 15/16"
[1167mm]

Control Valve Assembly

Swivel Joint

Vacuum Breaker

Pot Filling Hook Nozzle

EB-0068-H Flexible Stainless Steel Hose w/ Blue Grip Handle

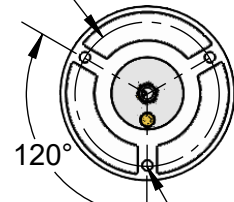
12"
[305mm] Approx. When Hanging

6 1/2"
[165mm]

Mounting Surface

Ø 9 1/16"
[230mm]

Ø 7 1/2"
[191mm]



(3) Bolt Holes for Ø 1/2" x 3" Hex Head Bolts & Expansion Shields (Included)

Product Specifications:

Kettle Kaddy Stanchion w/ Control Valve, 68" Flexible Stainless Steel Hose, Continuous Pressure Vacuum Breaker & Hook Nozzle Spray Valve

Product Compliance:

ASME A112.18.1 / CSA B125.1
NSF 61 - Section 9
NSF 372 (Low Lead Content)
2019 DOE PRSV Non-Compliant
CSA B64.8 (VB)



T&S BRASS AND BRONZE WORKS, INC.

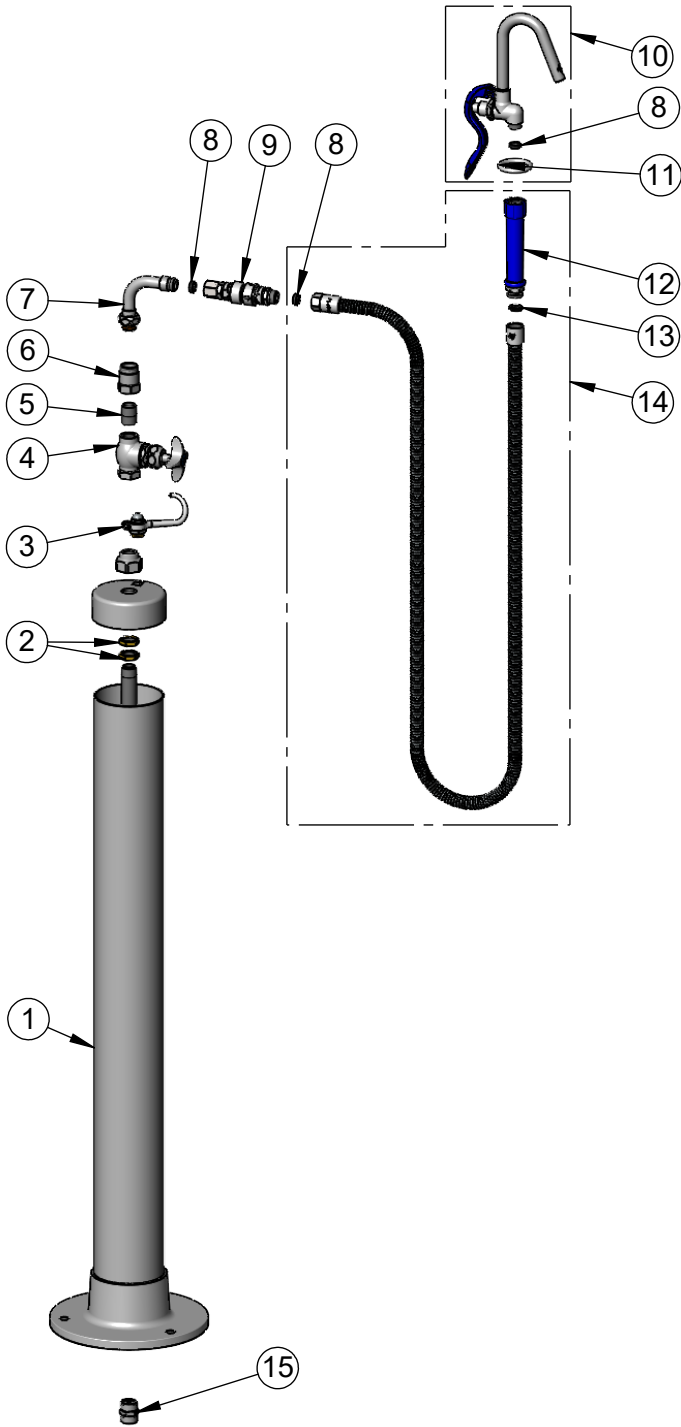
2 Saddleback Cove / P.O. Box 1088
Travelers Rest, SC 29690

Model No.

B-0196

Item No.

Travelers Rest, SC: 800-476-4103 • Simi Valley, CA: 800-423-0150 • Fax: 864-834-3518 • www.tsbrass.com



| ITEM NO. | SALES NO. | DESCRIPTION |
|----------|-----------|--|
| 1 | 002847-40 | B-0190 Stanchion |
| 2 | 002954-45 | Shank Lock Nut |
| 3 | 002852-40 | Finger Hook & Bolt |
| 4 | 0RK3 | 1/2" NPT Shut-Off Valve |
| 5 | 002534-25 | Close Nipple, 1/2" NPT |
| 6 | 000590-25 | 1/2" NPT Swivel Body |
| 7 | 034A | 90° Swivel Adapter |
| 8 | 010476-45 | #27 Washer |
| 9 | B-0970-01 | Continuous Pressure Vacuum Breaker |
| 10 | 012952-40 | Spray Valve w/ Hook Nozzle |
| 11 | 000907-45 | Spray Valve Hold Down Ring |
| 12 | 011482-40 | Blue Grip Handle |
| 13 | 001014-45 | Washer, Hose Barrel |
| 14 | EB-0068-H | 68" Flexible Stainless Steel Hose w/ Blue Handle |
| 15 | 001684-20 | Coupling, 1/2" |

Product Specifications:

Kettle Kaddy Stanchion w/ Control Valve, 68" Flexible Stainless Steel Hose, Continuous Pressure Vacuum Breaker & Hook Nozzle Spray Valve

Product Compliance:

ASME A112.18.1 / CSA B125.1
NSF 61 - Section 9
NSF 372 (Low Lead Content)
2019 DOE PRSV Non-Compliant
CSA B64.8 (VB)