



T&S BRASS AND BRONZE WORKS, INC.
 2 Saddleback Cove / P.O. Box 1088
 Travelers Rest, SC 29690

Model No.
B-0192

Item No.

Travelers Rest, SC: 800-476-4103 • Simi Valley, CA: 800-423-0150 • Fax: 864-834-3518 • www.tsbrass.com

This Space for Architect/Engineer Approval

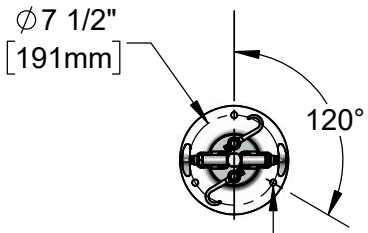
Job Name _____ Date _____

Model Specified _____ Quantity _____

Customer/Wholesaler _____

Contractor _____

Architect/Engineer _____



(3) Bolt Holes for ϕ 1/2" x 3" Hex Head Bolts & Expansion Shields (Included)

EB-0107-035
 High Flow Angled Spray Valve (Blue)

EB-0104-H
 Flexible Stainless Steel Hose w/ Blue Grip Handle

Pot Filling Hook Nozzle

Items Not Shown For Clarity

Swivel Joint

(2) **002852-40**
 Hook & Bolt

EB-0068-H
 Flexible Stainless Steel Hose w/ Blue Grip Handle

1/2" Check Valves

9 1/2" [242mm]
 Appx. When Hose is Hanging

9 1/2" [242mm]
 Appx. When Hose is Hanging

48" [1219mm]

6" [152mm]

Mounting Surface

ϕ 9 1/16" [230mm]

Rough-In Requirement:
 Assembly Connects to a 1/2" Pipe Nipples Roughed in From Floor on 2" Centers to a Height of 6"

Product Specifications:
 Kettle Kaddy Combination Kettle Filler Spray Stanchion, Control Valves, 104" and 68" Flexible Stainless Steel Hoses, Hook Nozzle, High Flow Spray Valve & (2) 1/2" Check Valves

Product Compliance:
 ASME A112.18.1 / CSA B125.1
 NSF 61 - Section 9
 NSF 372 (Low Lead Content)
 2019 DOE PRSV Non-Compliant

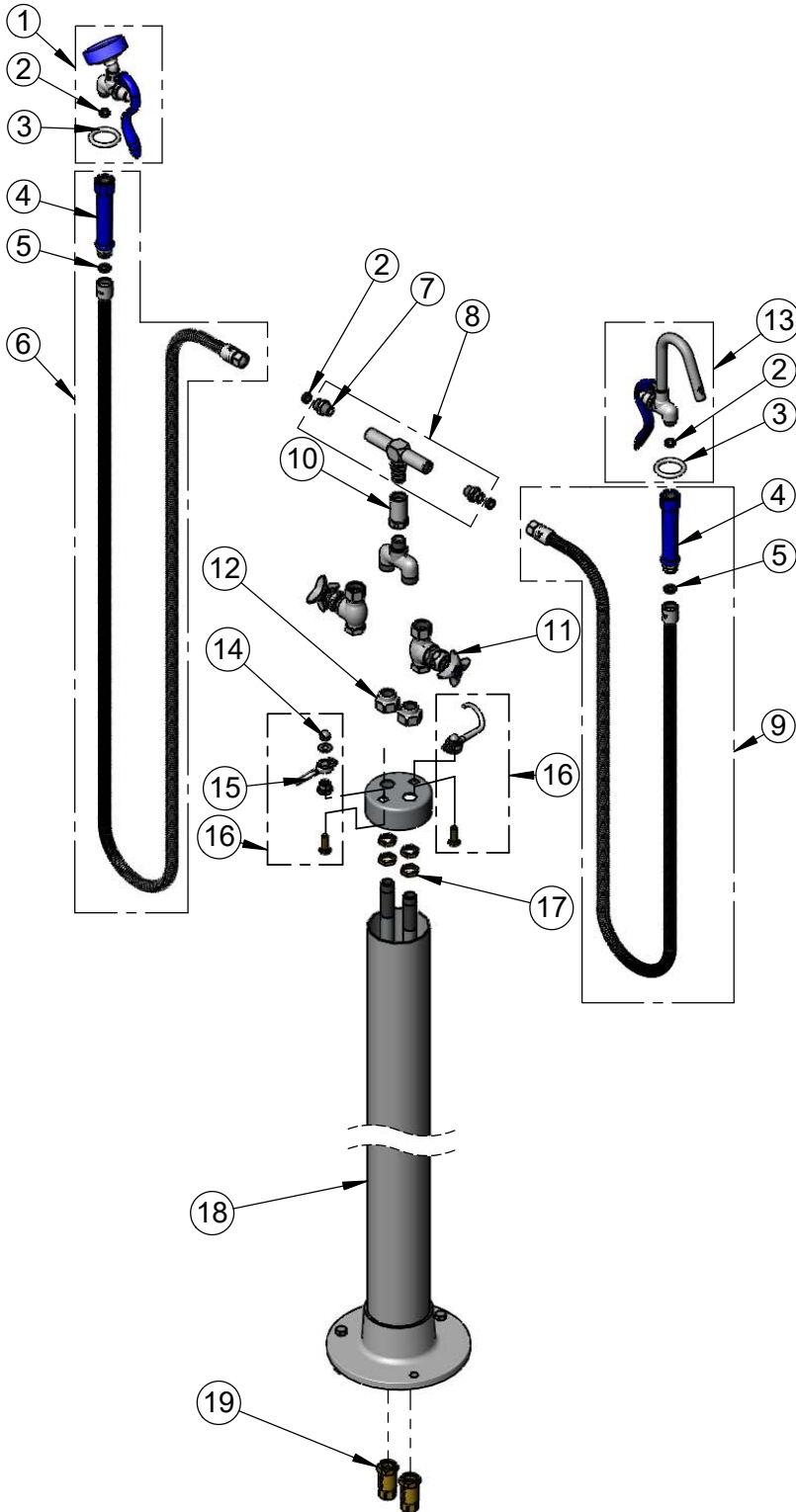


T&S BRASS AND BRONZE WORKS, INC.
 2 Saddleback Cove / P.O. Box 1088
 Travelers Rest, SC 29690

Model No.
B-0192

Item No.

Travelers Rest, SC: 800-476-4103 • Simi Valley, CA: 800-423-0150 • Fax: 864-834-3518 • www.tsbrass.com



ITEM NO.	SALES NO.	DESCRIPTION
1	EB-0107-035	High Flow Angled Spray Valve (Blue)
2	010476-45	#27 Washer
3	000907-45	Spray Valve Hold Down Ring
4	011482-40	Blue Grip Handle
5	001014-45	Washer, B-0100 Hose Barrel
6	EB-0104-H	104" Flexible Stainless Steel Hose w/ Blue Grip Handle
7	053A	Adapter, 3/8" NPT Male
8	002855-40	Swivel Tee
9	EB-0068-H	68" Flexible Stainless Steel Hose w/ Blue
10	000592-25	Pre-Rinse Swivel Body
11	0RK3	Shut-Off Control Valve
12	001457-40	Cap
13	012952-40	Spray Valve & Hook Nozzle
14	000950-25	Acorn Nut
15	004R	Finger Hook
16	002852-40	Finger Hook & Bolt
17	002954-45	Shank Lock Nut
18	002847-40	B-0190 Stanchion
19	B-CVH1-2	1/2" Check Valve

Product Specifications:

Kettle Kaddy Combination Kettle Filler Spray Stanchion, Control Valves, 104" and 68" Flexible Stainless Steel Hoses, Hook Nozzle, High Flow Spray Valve & (2) 1/2" Check Valves

Product Compliance:

ASME A112.18.1 / CSA B125.1
 NSF 61 - Section 9
 NSF 372 (Low Lead Content)
 2019 DOE PRSV Non-Compliant