



T&S BRASS AND BRONZE WORKS, INC.

2 Saddleback Cove / P.O. Box 1088
Travelers Rest, SC 29690

Model No.

B-0133-QD-1

Item No.

Travelers Rest, SC: 800-476-4103 • Simi Valley, CA: 800-423-0150 • Fax: 864-834-3518 • www.tsbrass.com

This Space for Architect/Engineer Approval

Job Name _____ Date _____

Model Specified _____ Quantity _____

Customer/Wholesaler _____

Contractor _____

Architect/Engineer _____

Parts Needed	QTY
1. 010476-45 Hose Washer	3
2. 146X Coupling	1
3. 053A Adapter	2
4. AW-5B Quick-Disconnect	1

Existing Fisher Flexible Hose

Place Washers into Each Side of 146X Coupling & Thread Coupling onto Hose

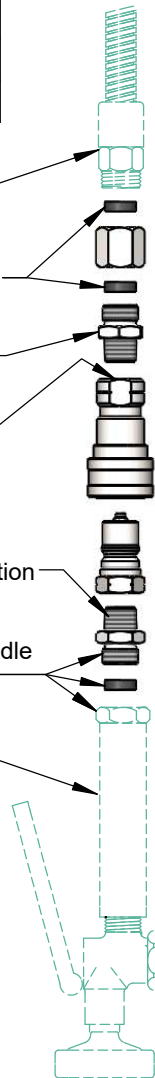
Screw 053A Adapter into 164X Coupling

Loctite Quick-Disconnect Section to 053A Adapter

Loctite 053A Adapter into Quick-Disconnect Plug Section

Place Washer into Fisher Spray Handle & Screw Handle & 053A Adapter Together

Re-Use Existing Fisher Spray Valve & Handle



To Retro-Fit a Fisher Pre-Rinse Unit

Parts Needed	QTY
1. 000729-40 Nut	1
2. 010476-45 Hose Washer	2
3. 053A Adapter	1
4. AW-5B Quick-Disconnect	1
5. 002535-25 Close Nipple	1
6. 002881-40 Gray Handle	1

Existing T&S Flexible Hose & Washer

Screw 000729-40 Nut onto Hose Barrel

Place a Washer Inside The 000729-40 Adapter

Screw 053A Adapter onto 000729-40 Adapter

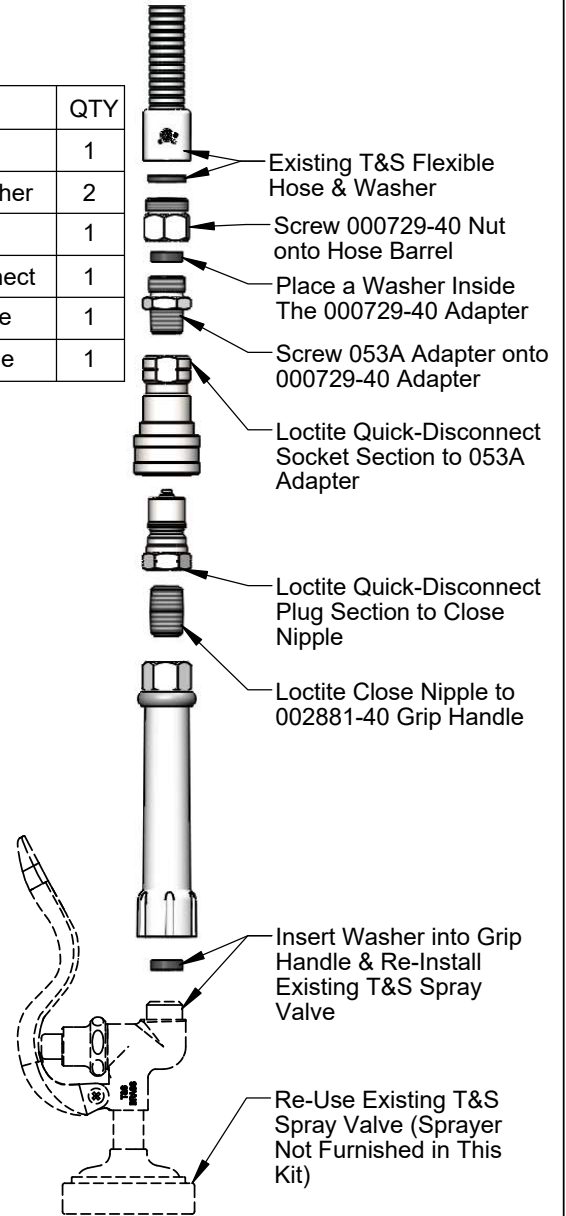
Loctite Quick-Disconnect Socket Section to 053A Adapter

Loctite Quick-Disconnect Plug Section to Close Nipple

Loctite Close Nipple to 002881-40 Grip Handle

Insert Washer into Grip Handle & Re-Install Existing T&S Spray Valve

Re-Use Existing T&S Spray Valve (Sprayer Not Furnished in This Kit)



To Retro-Fit a T&S Pre-Rinse Unit

Product Specifications:
Quick-Disconnect Adapter Retro-Fit Kit for Existing Pre-Rinse Unit

Product Compliance:
ASME A112.18.1 / CSA B125.1
NSF 61 - Section 9
NSF 372 (Low Lead Content)