



**T&S BRASS AND BRONZE WORKS, INC.**  
 2 Saddleback Cove / P.O. Box 1088  
 Travelers Rest, SC 29690

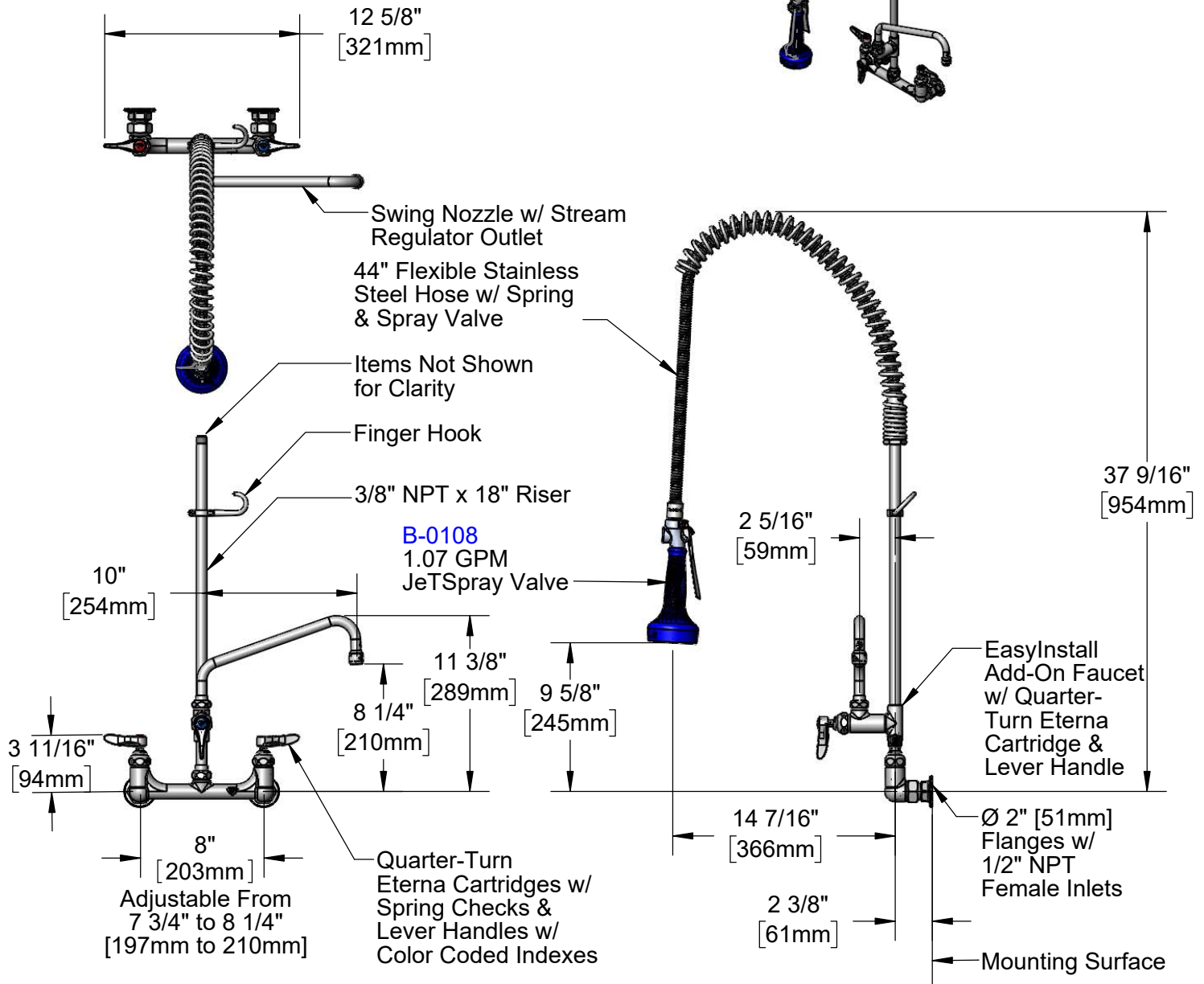
Model No.  
**B-0133-A10-08**

Item No.

Travelers Rest, SC: 800-476-4103 • Simi Valley, CA: 800-423-0150 • Fax: 864-834-3518 • www.tsbrass.com

This Space for Architect/Engineer Approval

Job Name \_\_\_\_\_ Date \_\_\_\_\_  
 Model Specified \_\_\_\_\_ Quantity \_\_\_\_\_  
 Customer/Wholesaler \_\_\_\_\_  
 Contractor \_\_\_\_\_  
 Architect/Engineer \_\_\_\_\_



Product Specifications:

Pre-Rinse Unit: EasyInstall 8" Wall Mount Mixing Faucet, Quarter-Turn Eterna Cartridges w/ Spring Checks, Lever Handles, 10" Add-On Faucet w/ Swing Nozzle, 44" Flexible Stainless Steel Hose, 1.07 GPM Spray Valve, 18" Riser, & 1/2" NPT Female Inlets

Product Compliance:

ASME A112.18.1 / CSA B125.1  
 NSF 61 - Section 9  
 NSF 372 (Low Lead Content)  
 2019 DOE PRSV - Class II



# T&S BRASS AND BRONZE WORKS, INC.

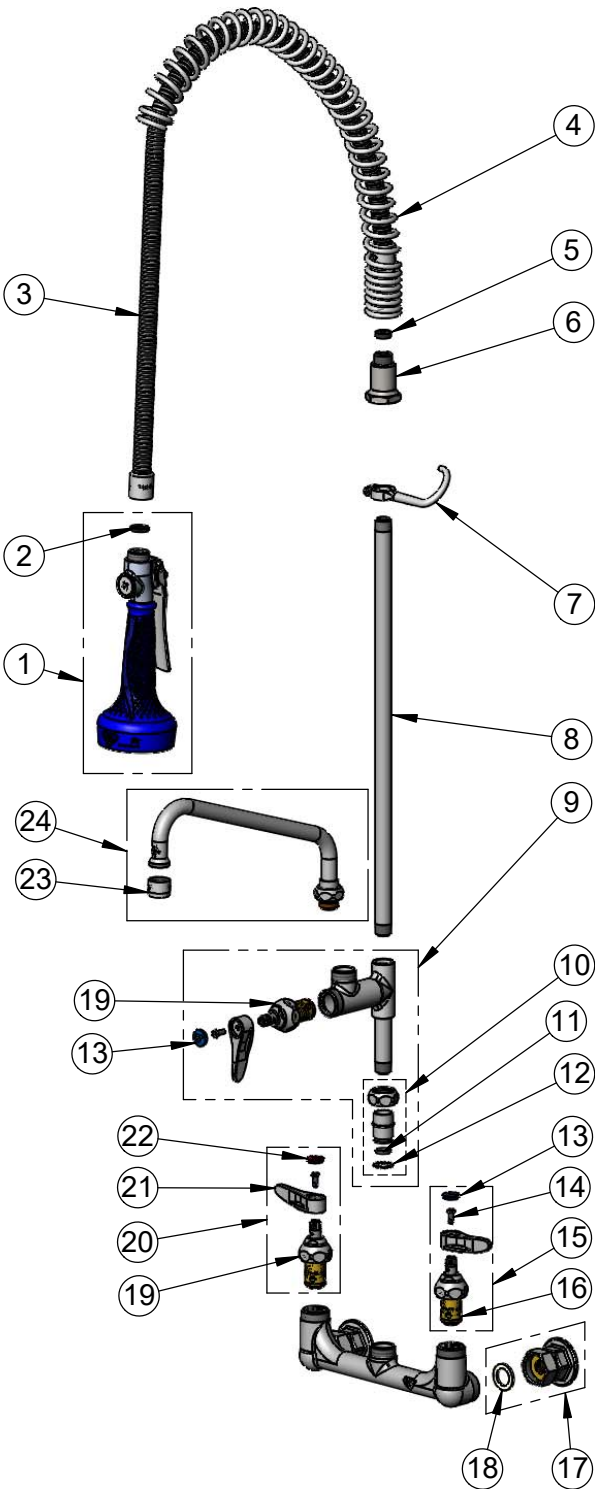
2 Saddleback Cove / P.O. Box 1088  
Travelers Rest, SC 29690

Model No.

**B-0133-A10-08**

Item No.

Travelers Rest, SC: 800-476-4103 • Simi Valley, CA: 800-423-0150 • Fax: 864-834-3518 • www.tsbrass.com



| ITEM NO. | SALES NO.   | DESCRIPTION   |
|----------|-------------|---|
| 1        | B-0108      | 1.07 GPM Spray Valve w/ Ergo-Grip   |
| 2        | 001014-45   | Washer, Hose Barrel   |
| 3        | B-0044-H2A  | 44" Flexible Stainless Steel Hose, Less Handle  |
| 4        | 000888-45   | EasyInstall Overhead Spring   |
| 5        | 010476-45   | #27 Washer  |
| 6        | 000821-40   | Spring Body   |
| 7        | 004R        | Finger Hook   |
| 8        | 000369-40   | 3/8" NPT x 18" Riser  |
| 9        | B-0155-LNEZ | EasyInstall Add-On Faucet w/ Quarter-Turn Eterna Cartridge, RTC & Lever Handle, Less Nozzle |
| 10       | EZ-K        | EasyInstall Kit   |
| 11       | 001065-45   | O-Ring  |
| 12       | 014200-45   | Star Washer, Anti-Rotation  |
| 13       | 018506-19NS | Blue Button Index, Press-in   |
| 14       | 000925-45   | Lab Handle Screw  |
| 15       | 002711-40NS | Quarter-Turn Eterna Cartridge w/ Spring Check, Handle, Blue Index & Screw, LTC              |
| 16       | 012442-40NS | Quarter-Turn Eterna Cartridge w/ Spring Check, LTC  |
| 17       | 00AA        | 1/2" NPT Female Eccentric Flange  |
| 18       | 001019-45   | Coupling Nut Washer   |
| 19       | 012443-40NS | Quarter-Turn Eterna Cartridge w/ Spring Check, RTC  |
| 20       | 002712-40NS | Quarter-Turn Eterna Cartridge w/ Spring Check, Handle, Red Index & Screw, RTC               |
| 21       | 001638-45NS | Lever Handle (New Style)  |
| 22       | 001193-19NS | Red Button Index, Press-in  |
| 23       | B-PT        | Full Flow Stream Regulator, 55/64-27  |
| 24       | 061X        | 10" Swing Nozzle  |

**Product Specifications:**

Pre-Rinse Unit: EasyInstall 8" Wall Mount Mixing Faucet, Quarter-Turn Eterna Cartridges w/ Spring Checks, Lever Handles, 10" Add-On Faucet w/ Swing Nozzle, 44" Flexible Stainless Steel Hose, 1.07 GPM Spray Valve, 18" Riser, & 1/2" NPT Female Inlets

**Product Compliance:**

ASME A112.18.1 / CSA B125.1  
NSF 61 - Section 9  
NSF 372 (Low Lead Content)  
2019 DOE PRSV - Class II