

*This Space for Architect/Engineer Approval*

Job Name \_\_\_\_\_ Date \_\_\_\_\_

Model Specified \_\_\_\_\_ Quantity \_\_\_\_\_

Customer/Wholesaler \_\_\_\_\_

Contractor \_\_\_\_\_

Architect/Engineer \_\_\_\_\_

**Rough-In Requirement:**  
 Ø 1 1/2" [Ø 38mm] Mounting Hole

|  |   |               |                |            |               |
|--|---|---------------|----------------|------------|---------------|
| Model Number<br><p style="text-align: center;"><b>5PR-2S00-H</b></p>   | Product Specifications:<br><b>International Pre-Rinse Unit: Single Hole Deck Mount Mixing Faucet, Ceramic Cartridges, Lever Handles, 44" Flexible Stainless Steel Hose, High Flow Spray Valve, 1/2" BSPP In-Line Check Valves, 6" Wall Bracket &amp; (2) 18" Flexible Supply Hoses</b>  |               |                |            |               |
| Product Compliance:<br>ASME A112.18.1 / CSA B125.1<br>NSF 61 - Section 9<br>NSF 372 (Low Lead Content)<br>EPA Act 2005 Non-Compliant (PRSV)<br>Product Not Designed/Intended for Commercial Warewashing in North America | <div style="display: flex; justify-content: space-between; align-items: center;"> <div data-bbox="600 1900 738 1984"> <p>equip<br/>Foodservice<br/>Accessories</p> </div> <div data-bbox="747 1858 1096 2026" style="text-align: center;"> </div> <div data-bbox="1104 1890 1550 2005"> <p>2 Saddleback Cove, P.O. Box 1088<br/>           Travelers Rest, South Carolina 29690<br/>           Phone: 800.891.4808 Fax: 800.868.0084<br/>           equip.tsbrass.com</p> </div> </div> |               |                |            |               |
| Drawn: JBC   | Checked: JRM  | Approved: JHB | Date: 02/15/16 | Scale: 1:8 | Sheet: 1 of 2 |

Model Number

**5PR-2S00-H**

Product Compliance:

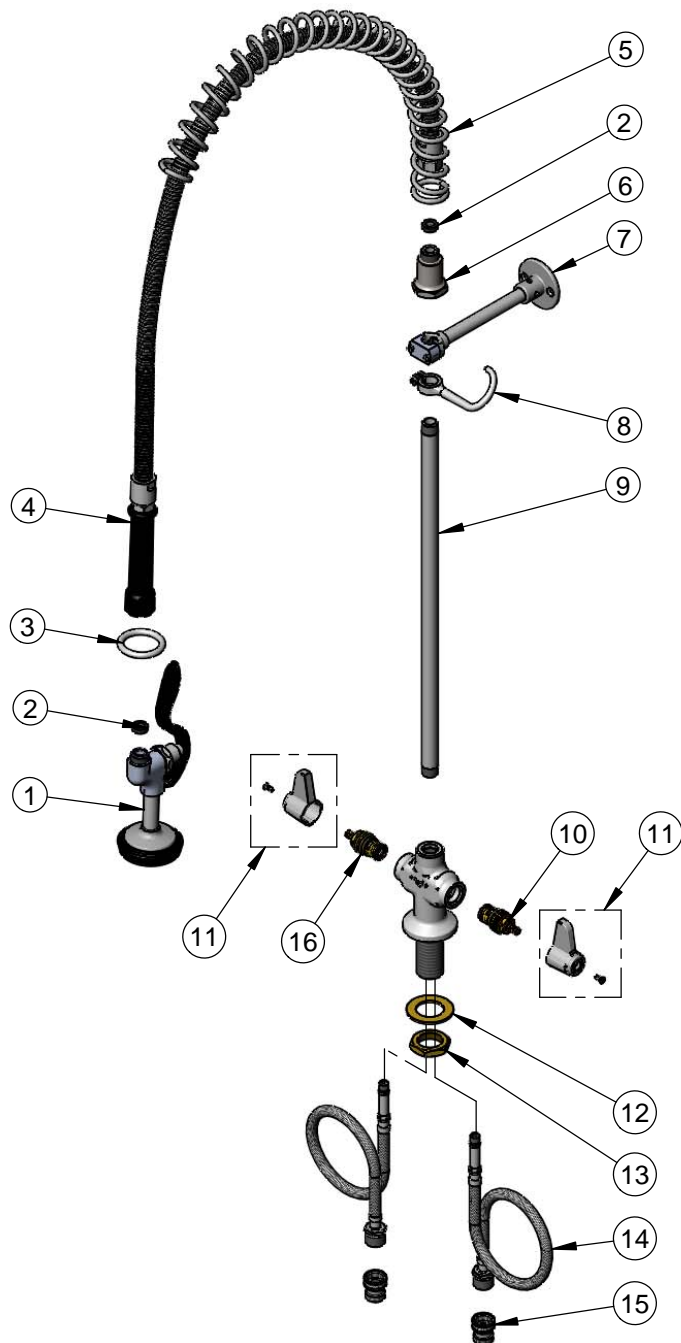
ASME A112.18.1 / CSA B125.1  
 NSF 61 - Section 9  
 NSF 372 (Low Lead Content)  
 EPA Act 2005 Non-Compliant (PRSV)  
 Product Not Designed/Intended for Commercial Warewashing in North America

Product Specifications:

**International Pre-Rinse Unit: Single Hole Deck Mount Mixing Faucet, Ceramic Cartridges, Lever Handles, 44" Flexible Stainless Steel Hose, High Flow Spray Valve, 1/2" BSPP In-Line Check Valves, 6" Wall Bracket & (2) 18" Flexible Supply Hoses**

equip  
Foodservice  
Accessories

2 Saddleback Cove, P.O. Box 1088  
 Travelers Rest, South Carolina 29690  
 Phone: 800.891.4808 Fax: 800.868.0084  
 equip.tsbrass.com



| ITEM NO. | SALES NO. | DESCRIPTION                              |
|----------|-----------|--|
| 1        | 5SV-H     | equip High Flow Spray Valve              |
| 2        | 010476-45 | #27 Washer                               |
| 3        | 000907-45 | Spray Valve Hold Down Ring               |
| 4        | 5HSE44    | equip 44" Flexible Stainless Steel Hose  |
| 5        | 014068-45 | Overhead Spring                          |
| 6        | 000821-40 | Spring Body                              |
| 7        | 013716-40 | 6" Wall Bracket                          |
| 8        | 004R      | Finger Hook                              |
| 9        | 000369-40 | 3/8" NPT x 18" Riser                     |
| 10       | 013788-45 | equip Ceramic Cartridge, LTC             |
| 11       | 5-HDL-L   | equip Lever Handle w/ Color Coded Screws |
| 12       | 002290-45 | Lock Washer                              |
| 13       | 000965-45 | Lock Nut                                 |
| 14       | 012436-45 | 18" Flexible Supply Hose (2)             |
| 15       | 010321-45 | 1/2" BSPP In-Line Check Valve            |
| 16       | 013787-45 | equip Ceramic Cartridge, RTC             |

Model Number

**5PR-2S00-H**

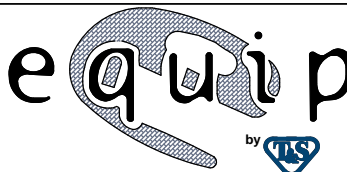
Product Specifications:

International Pre-Rinse Unit: Single Hole Deck Mount Mixing Faucet, Ceramic Cartridges, Lever Handles, 44" Flexible Stainless Steel Hose, High Flow Spray Valve, 1/2" BSPP In-Line Check Valves, 6" Wall Bracket & (2) 18" Flexible Supply Hoses

Product Compliance:

ASME A112.18.1 / CSA B125.1  
 NSF 61 - Section 9  
 NSF 372 (Low Lead Content)  
 EPA Act 2005 Non-Compliant (PRSV)  
 Product Not Designed/Intended for  
 Commercial Warewashing in North America

equip  
 Foodservice  
 Accessories



2 Saddleback Cove, P.O. Box 1088  
 Travelers Rest, South Carolina 29690  
 Phone: 800.891.4808 Fax: 800.868.0084  
 equip.tsbrass.com