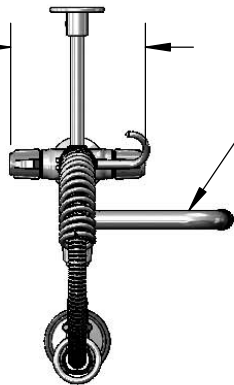


This Space for Architect/Engineer Approval

Job Name _____ Date _____
 Model Specified _____ Quantity _____
 Customer/Wholesaler _____
 Contractor _____
 Architect/Engineer _____

5 5/8"
[143mm]



5SP-06
6" Swing Nozzle
w/ Laminar Flow
Device



equip 24" Flexible
Stainless Steel Hose
w/ Spring & Spray
Valve

Items Not Shown
For Clarity
3/8" NPT x 8" Riser
Finger Hook

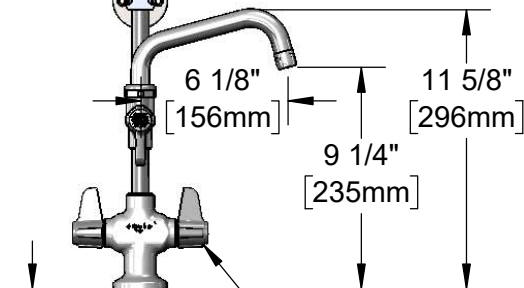
5SV
1.15 GPM
Spray Valve

2 5/16"
[59mm]

013716-40
6" Wall
Bracket

24 3/4"
[628mm]

5AFL06
Add-On Faucet w/
Quarter-Turn
Ceramic Cartridge,
equip Lever Handle
& 6" Swing Nozzle



6 1/8"
[156mm]

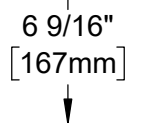
11 5/8"
[296mm]

9 1/4"
[235mm]

Quarter-Turn
Ceramic Cartridges
& equip Lever
Handles w/ Color
Coded Screws

2 5/16"
[59mm]

18" Flexible
Stainless Steel
Supply Hoses



6 9/16"
[167mm]

Mounting
Surface

7 3/8"
[188mm]

1 1/4"
[32mm]
Maximum
Thickness

In-Line Check
Valves w/
1/2" BSP
Male Threads

Ø 2 1/4" [57mm]
Deck Flange

Rough-In Requirement:
Ø 1 1/2" [Ø 38mm] Mounting Hole

Model Number

5MPH-2SLN-06

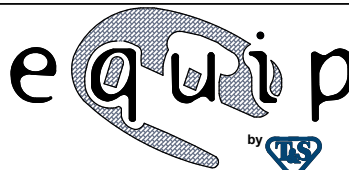
Product Compliance:

ASME A112.18.1 / CSA B125.1
NSF 61 - Section 9
NSF 372 (Low Lead Content)
2019 DOE PRSV - Class II

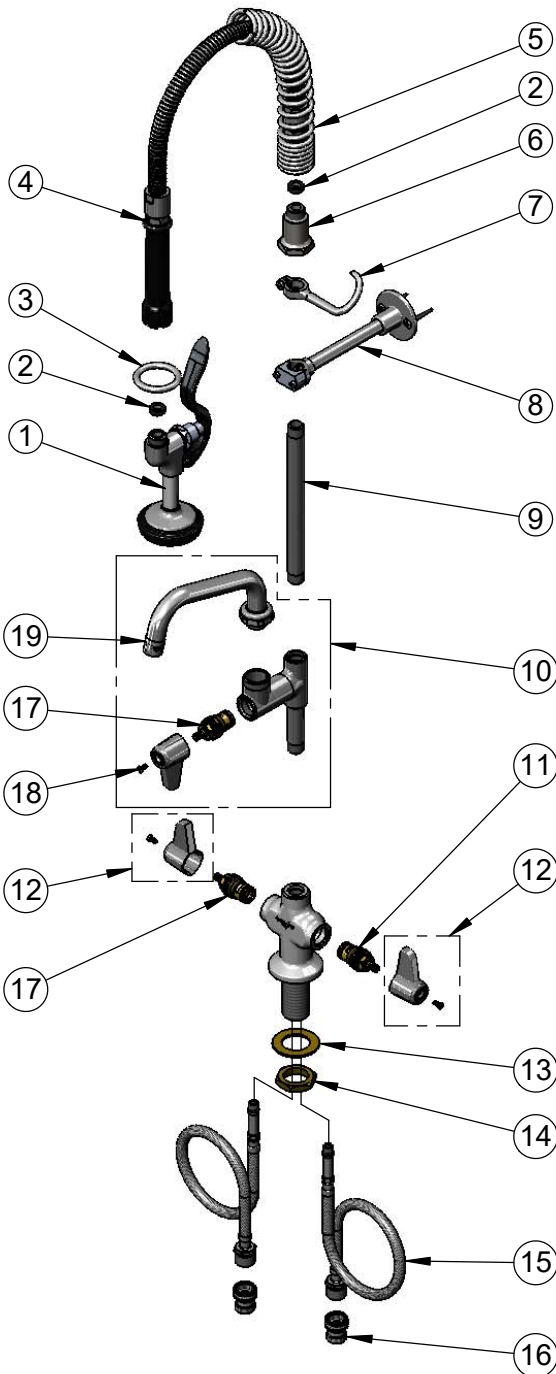
Product Specifications:

Pre-Rinse Unit: Single Hole Deck Mount Mixing Faucet, Quarter-Turn Ceramic Cartridges, Add-On Faucet w/ 6" Swing Nozzle, 6" Wall Bracket, 1.15 GPM Spray Valve, 1/2" BSP In-Line Check Valves & Flexible Supply Hoses

equip
Foodservice
Accessories



2 Saddleback Cove, P.O. Box 1088
Travelers Rest, South Carolina 29690
Phone: 800.891.4808 Fax: 800.868.0084
equip.tsbrass.com



ITEM NO.	SALES NO.	DESCRIPTION
1	5SV	1.15 GPM Gray Spray Valve
2	010476-45	#27 Washer
3	000907-45	Spray Valve Hold Down Ring
4	5HSE24	24" Flexible Stainless Steel Hose w/ Black Handle
5	016795-45	Compact Spring
6	000821-40	Spring Body
7	004R	Finger Hook
8	013716-40	6" Wall Bracket
9	078X	Nipple, 3/8" NPT x 8"
10	5AFL06	Add-On Faucet w/ 6" Swing Nozzle
11	013788-45	equip Ceramic Cartridge, LTC
12	5-HDL-L	equip Lever Handle w/ Color Coded Screws
13	002290-45	Lock Washer
14	000965-45	Lock Nut
15	012534-45	18" Flexible Supply Hose (2)
16	010321-45	1/2" BSPP Check Valve Adapter
17	013787-45	equip Ceramic Cartridge, RTC
18	013849-45	Screw, 4mm Metric (10)
19	5SP-06	equip 6" Swing Nozzle

Model Number

5MPH-2SLN-06

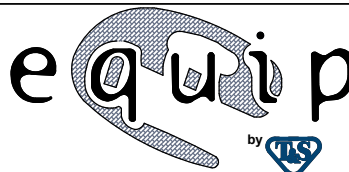
Product Specifications:

Pre-Rinse Unit: Single Hole Deck Mount Mixing Faucet, Quarter-Turn Ceramic Cartridges, Add-On Faucet w/ 6" Swing Nozzle, 6" Wall Bracket, 1.15 GPM Spray Valve, 1/2" BSPP In-Line Check Valves & Flexible Supply Hoses

Product Compliance:

ASME A112.18.1 / CSA B125.1
 NSF 61 - Section 9
 NSF 372 (Low Lead Content)
 2019 DOE PRSV - Class II

equip
 Foodservice
 Accessories



2 Saddleback Cove, P.O. Box 1088
 Travelers Rest, South Carolina 29690
 Phone: 800.891.4808 Fax: 800.868.0084
 equip.tsbrass.com