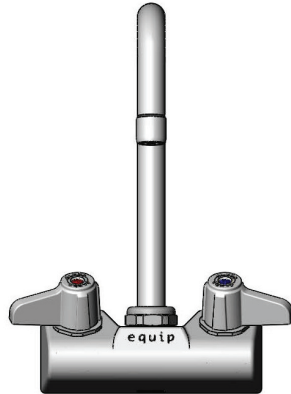


Installation and Maintenance Instructions

EQUIP 4" WALL-MOUNT FAUCETS



Limited One Year Warranty

Equip warrants to the original purchaser (other than for purposes of resale) that such product is free from defects in material and workmanship for a period of one (1) year from the date of purchase. During this one-year warranty period, if the product is found to be defective, Equip shall, at its option, repair and/or replace it. To obtain warranty service, products must be returned to...

Equip Foodservice Accessories
Attn: Warranty Repair Department
P.O. Box 1088, 2 Saddleback Cove
Travelers Rest, SC 29690

Shipping, freight, insurance, and other transportation charges of the product to Equip and the return of repaired or replaced product to the purchaser are the responsibility of the purchaser. Repair and/or replacement shall be made within a reasonable time after receipt by Equip of the

returned product. This warranty does not cover items which have received secondary finishing or have been altered or modified after purchase, or for defects caused by physical abuse to or misuse of the product, or shipment of the products.

Any express warranty not provided herein, and any remedy for Breach of Contract which might arise, is hereby excluded and disclaimed. Any implied warranties of merchantability or fitness for a particular purpose are limited to one year in duration. Under no circumstances shall Equip be liable for loss of use or any special consequential costs, expenses or damages.

Some states do not allow limitations on how long an implied warranty lasts or the exclusion or limitation of incidental or consequential damages, so the above limitations or exclusions may not apply to you. Specific rights under this warranty and other rights vary from state to state.



equip Foodservice Accessories  REG #A2601 ISO #0001
P.O. BOX 1088, 2 SADDLEBACK COVE
TRAVELERS REST, SOUTH CAROLINA 29690
PHONE: 800.891.4808 FAX: 800.868.0084

Part Numbers

Equip Faucet Parts List

Ceramic Cartridge, Hot	013787-45
Ceramic Cartridge, Cold	013788-45
Screw, Handle (Colored)	*
Screw, Blue Head (Cold)	014455-45
Screw, Red Head (Hot)	014456-45
Lever Handle Kit (includes colored screws)	5-HDL-L
Aerator, 3/4-27 UN, 2.2 GPM	013838-45
Gooseneck & Nozzle Options	
3" Swing Gooseneck with 2.2 GPM Aerator	5SP-03A
5-1/2" Swing Gooseneck with 2.2 GPM Aerator	5SP-05A
6" Swing Nozzle with 2.2 GPM Aerator	5SP-06A
8" Swing Nozzle with 2.2 GPM Aerator	5SP-08A
10" Swing Nozzle with 2.2 GPM Aerator	5SP-10A
12" Swing Nozzle with 2.2 GPM Aerator	5SP-12A
Nut, Swing Spout	013839-25
O-Ring, Swing Spout	013848-45

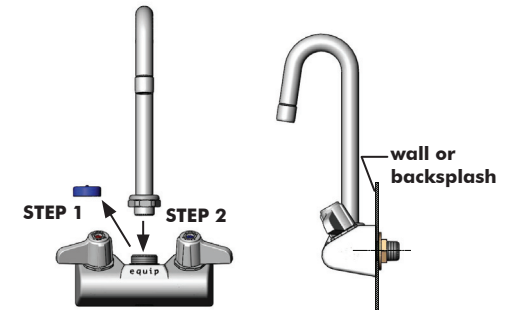
Instructions

Note: If unit is equipped with a rigid or swivel spout/gooseneck, install spout/gooseneck first.

Swivel Spout/Gooseneck Installation:

Note: Silicone grease is applied to the interior swivel cavity of the body prior to shipment. No additional grease is required.

1. Remove plastic cap from body outlet.
2. Insert spout/gooseneck into body cavity.
3. Tighten swivel lock nut using 1 5/16" wrench.



Faucet Body Installation:

4. Drill two holes, approximately 1" to 1 1/4" diameter, in wall or backsplash of sink. Holes must be 4" between centers.
5. Apply plumbers putty to back face of escutcheon to seal against the wall/backsplash. Insert 1/2" male pipe inlets through holes in wall or backsplash and loosely secure with washers and locknuts provided.
6. Tighten locknuts to back face of wall/backsplash.
7. Connect water supply and check for leaks.

P/N: 098-017588-45 Rev.1
Date: 06-19-09
Drawn: TEH
Checked: DMH 06-19-09
Approved: JHB 06-19-09