

5 7/8"
[149mm]



ADA Compliant

This Space for Architect/Engineer Approval

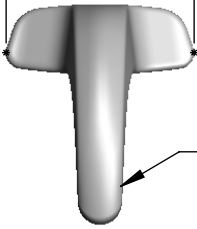
Job Name _____ Date _____

Model Specified _____ Quantity _____

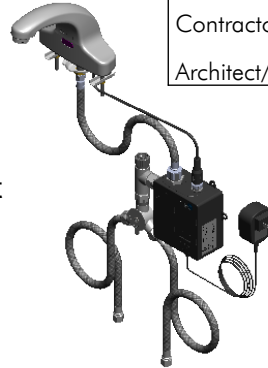
Customer/Wholesaler _____

Contractor _____

Architect/Engineer _____



Polished Chrome Plated Cast Spout w/
B-0199-09-WS
1.5 GPM Vandal Resistant
Aerator & Key



24" [610mm]
Sensor Cable

1/2" NPSM x 1/4" NPSM
x 18" [457mm] Flexible
Stainless Steel Hose

5 3/16"
[132mm]

3 5/8"
[92mm]

4 15/16"
[126mm]

Mounting
Surface

3/4"
[19mm]
Maximum
Thickness

4"
[102mm]

Removable
Strainer

4" x 4 3/8" x 2 3/16" Deep
[102mm x 111mm x 56mm]
Control Module Box (Black)
w/ Water Resistant
Connections. AC or DC
Operated w/ (4) AA Batteries

100-240 VAC Adapter
w/ 72" [1830mm]
Double Power Cord
(Remove Rubber Plugs
in Module to Connect.)

(2) 3/8" Compression x 1/2" NPSM
18" [457mm] Flexible Stainless Steel
Supply Hoses

Mechanical Mixing Valve
w/ Integral Check Valves

Rough-In Requirement:

- (1) \varnothing 1" [25mm] Center Shank Mounting Hole
- (2) \varnothing 1/2" [13mm] Mounting Stud Holes on 4" [102mm] Centers

Model Number

5EF-2D-DS-WS

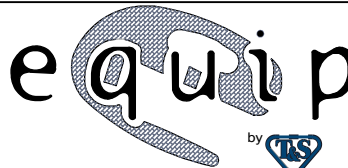
Product Specifications:

Electronic Faucet: 4" Deck Mount Cast Spout Faucet, VR 1.5 GPM Aerator, AC-DC Control Module, Temperature Control Mixing Valve, Integral Check Valves & (2) 18" Flexible Supply Hoses

Product Compliance:

ASME A112.18.1 / CSA B125.1
NSF 61 - Section 9
NSF 372 (Low Lead Content)
ANSI A117.1 (ADA)
EPA WaterSense
UL 1951

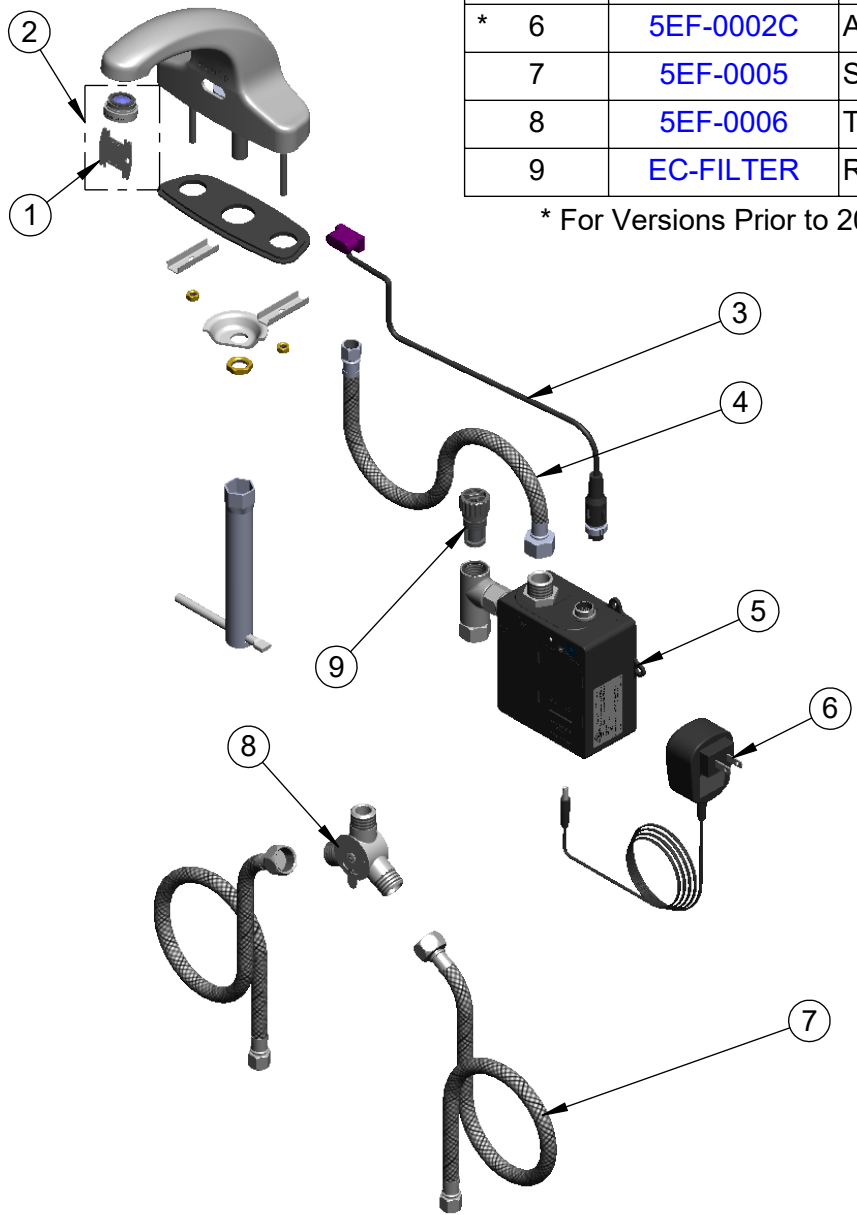
equip
Foodservice
Accessories



2 Saddleback Cove, P.O. Box 1088
Travelers Rest, South Carolina 29690
Phone: 800.891.4808 Fax: 800.868.0084
equip.tsbrass.com

| ITEM NO. | SALES NO. | DESCRIPTION |
|----------|--------------|---|
| 1 | 015425-45 | Vandal Resistant Key |
| 2 | B-0199-09-WS | VR 1.5 GPM Aerator, 15/16-27 UN Male w/ Key |
| * 3 | 5EF-0003C | Sensor Cable w/ Flat Lens |
| 4 | 016297-45 | Inlet Hose, Faucet, 1/2" NPSM-F x 1/4" NPSM-F |
| * 5 | 5EF-0001C | equip Control Module (Black) |
| * 6 | 5EF-0002C | AC Adapter - US Plug |
| 7 | 5EF-0005 | Supply Hose, 9/16-24 Female x 1/2" NPSM |
| 8 | 5EF-0006 | Temperature Mixing Valve |
| 9 | EC-FILTER | Replacement Filter |

* For Versions Prior to 2024, Consult with Customer Service



Model Number
5EF-2D-DS-WS

Product Specifications:
Electronic Faucet: 4" Deck Mount Cast Spout Faucet, VR 1.5 GPM Aerator, AC-DC Control Module, Temperature Control Mixing Valve, Integral Check Valves & (2) 18" Flexible Supply Hoses

Product Compliance:
ASME A112.18.1 / CSA B125.1
NSF 61 - Section 9
NSF 372 (Low Lead Content)
ANSI A117.1 (ADA)
EPA WaterSense
UL 1951

equip
Foodservice
Accessories



2 Saddleback Cove, P.O. Box 1088
Travelers Rest, South Carolina 29690
Phone: 800.891.4808 Fax: 800.868.0084
equip.tsbrass.com