



T&S BRASS AND BRONZE WORKS, INC.

2 Saddleback Cove / P.O. Box 1088
Travelers Rest, SC 29690

Model No.

021047-40

Item No.

Travelers Rest, SC: 800-476-4103 • Simi Valley, CA: 800-423-0150 • Fax: 864-834-3518 • www.tsbrass.com

This Space for Architect/Engineer Approval

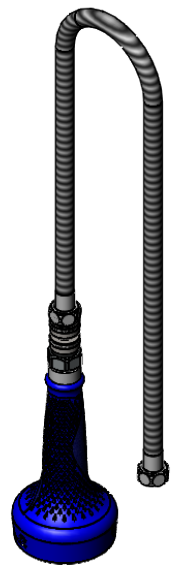
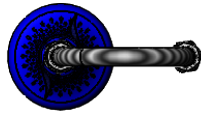
Job Name _____ Date _____

Model Specified _____ Quantity _____

Customer/Wholesaler _____

Contractor _____

Architect/Engineer _____



G1/2" SS Ball
Joint Swivel w/
Washer Included

30" Stainless Steel
Braided Hose w/
1/2" NPSM Threads

7 5/8"
[194mm]

3 1/4"
[83mm]

1.07 GPM Insulated
Sprayer w/ Check Valve

Product Specifications:

1.07 GPM Blue Insulated Sprayer, G1/2" SS Ball Joint Swivel, and 30" SS Braided Hose with 1/2" NPSM Threads

Product Compliance:

ASME A112.18.1 / CSA B125.1
NSF 61 - Section 9
NSF 372 (Low Lead Content)
2019 DOE PRSV - Class II



T&S BRASS AND BRONZE WORKS, INC.

2 Saddleback Cove / P.O. Box 1088
Travelers Rest, SC 29690

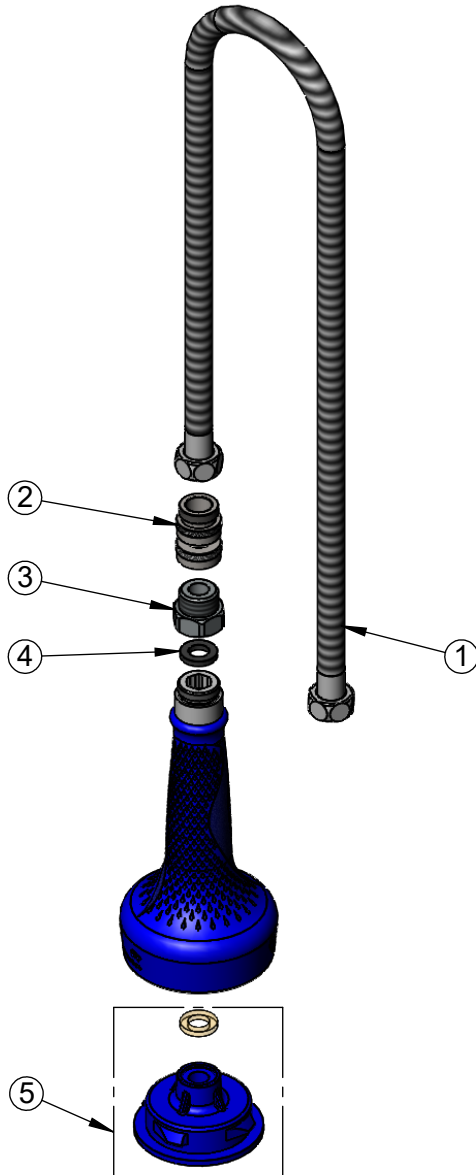
Model No.

021047-40

Item No.

Travelers Rest, SC: 800-476-4103 • Simi Valley, CA: 800-423-0150 • Fax: 864-834-3518 • www.tsbrass.com

ITEM NO.	SALES NO.	DESCRIPTION
1	019901-45	30" SS Flex Hose w/ 1/2" NPSM Female Threads & Seals
2	021046-45	SS Ball Joint Swivel w/ Washer
3	005221-25	7/8-20 UN x 1/2" BSPP Adapter
4	001014-45	Washer, Hose Barrel
5	108SF-RK	1.07 GPM Flow Spray Face



Product Specifications:

1.07 GPM Blue Insulated Sprayer, G1/2" SS Ball Joint Swivel, and 30" SS Braided Hose with 1/2" NPSM Threads

Product Compliance:

ASME A112.18.1 / CSA B125.1
NSF 61 - Section 9
NSF 372 (Low Lead Content)
2019 DOE PRSV - Class II