



T&S BRASS AND BRONZE WORKS, INC.
 2 Saddleback Cove / P.O. Box 1088
 Travelers Rest, SC 29690

Model No.
005310-40

Item No.

Travelers Rest, SC: 800-476-4103 • Simi Valley, CA: 800-423-0150 • Fax: 864-834-3518 • www.tsbrass.com

This Space for Architect/Engineer Approval

Job Name _____ Date _____

Model Specified _____ Quantity _____

Customer/Wholesaler _____

Contractor _____

Architect/Engineer _____



1/4-18" NPT
 Female Outlet

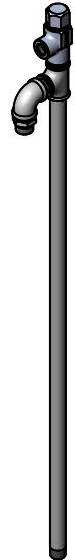
2"
 [50mm]

3/8" NPT x 3/4-14 UN
 Adapter Outlet

27 15/16"
 [709mm]

22 11/16"
 [577mm]

Swivel Tee



3/8" NPT
 Male Thread

Product Specifications:
 Riser Assembly w/ Swivel, Chrome Polished

Product Compliance:
 ASME A112.18.1 / CSA B125.1
 NSF 61 - Section 9
 NSF 372 (Low Lead Content)

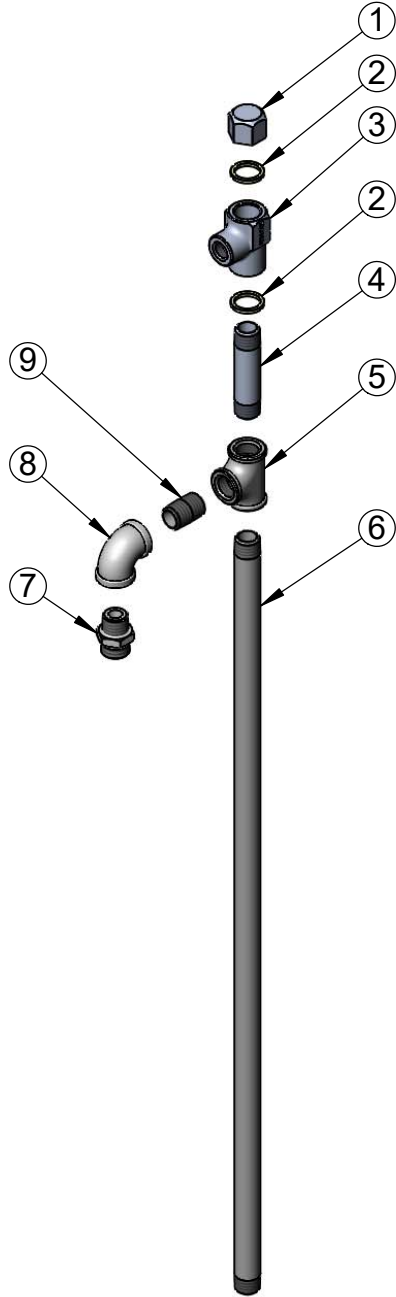


T&S BRASS AND BRONZE WORKS, INC.
 2 Saddleback Cove / P.O. Box 1088
 Travelers Rest, SC 29690

Model No.
005310-40

Item No.

Travelers Rest, SC: 800-476-4103 • Simi Valley, CA: 800-423-0150 • Fax: 864-834-3518 • www.tsbrass.com



ITEM NO.	SALES NO.	DESCRIPTION
1	005251-45	Cap, 3/8" NPT
2	001051-45	Washer
3	005255-40	Tee, Swivel
4	001796-40	Nipple, 3/8 NPT x 2 3/4 Lg.
5	001614-40	3/8" NPT Forged Tee
6	000363-40	3/8" NPT x 24" Riser
7	053A	Adapter, 3/8" NPT x 3/4-14UN
8	001355-40	Elbow, 3/8" NPT
9	002535-25	3/8" Close Nipple

Product Specifications:
 Riser Assembly w/ Swivel, Chrome Polished

Product Compliance:
 ASME A112.18.1 / CSA B125.1
 NSF 61 - Section 9
 NSF 372 (Low Lead Content)