

REFRIGERATOR MANUFACTURER
Turbo air

Turbo Air Speed up the Pace of Innovation

CAUTION!
PLEASE KEEP POWER
SWITCH ON BEFORE
OPERATING THIS EQUIPMENT

Commercial Pizza Prep Tables Service Manual

Please read this manual completely before attempting to install or operate this equipment!

Super Deluxe Series

TPR-44SD
TPR-67SD
TPR-93SD

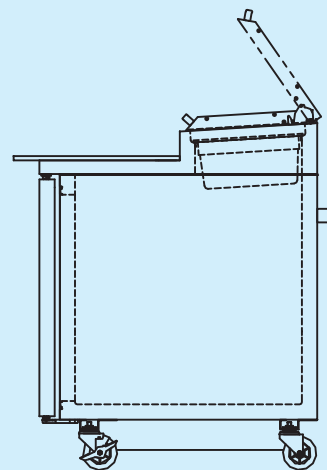
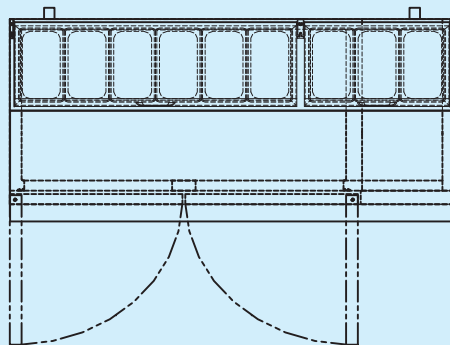


TABLE OF CONTENTS

1. EXPLODED VIEW

1-1. TPR-44SD EXPLODED VIEW

1-2. TPR-67SD EXPLODED VIEW

1-3. TPR-93SD EXPLODED VIEW

2. WIRING DIAGRAMS

2-1. TPR-44SD

2-2. TPR-67SD / 93SD

3. MAIN COMPONENTS

4. TEMPERATURE CONTROL INSTRUCTION

5. PARTS LIST

6. REPLACEMENT OF MAIN COMPONENTS

6-1. REPLACING DOOR

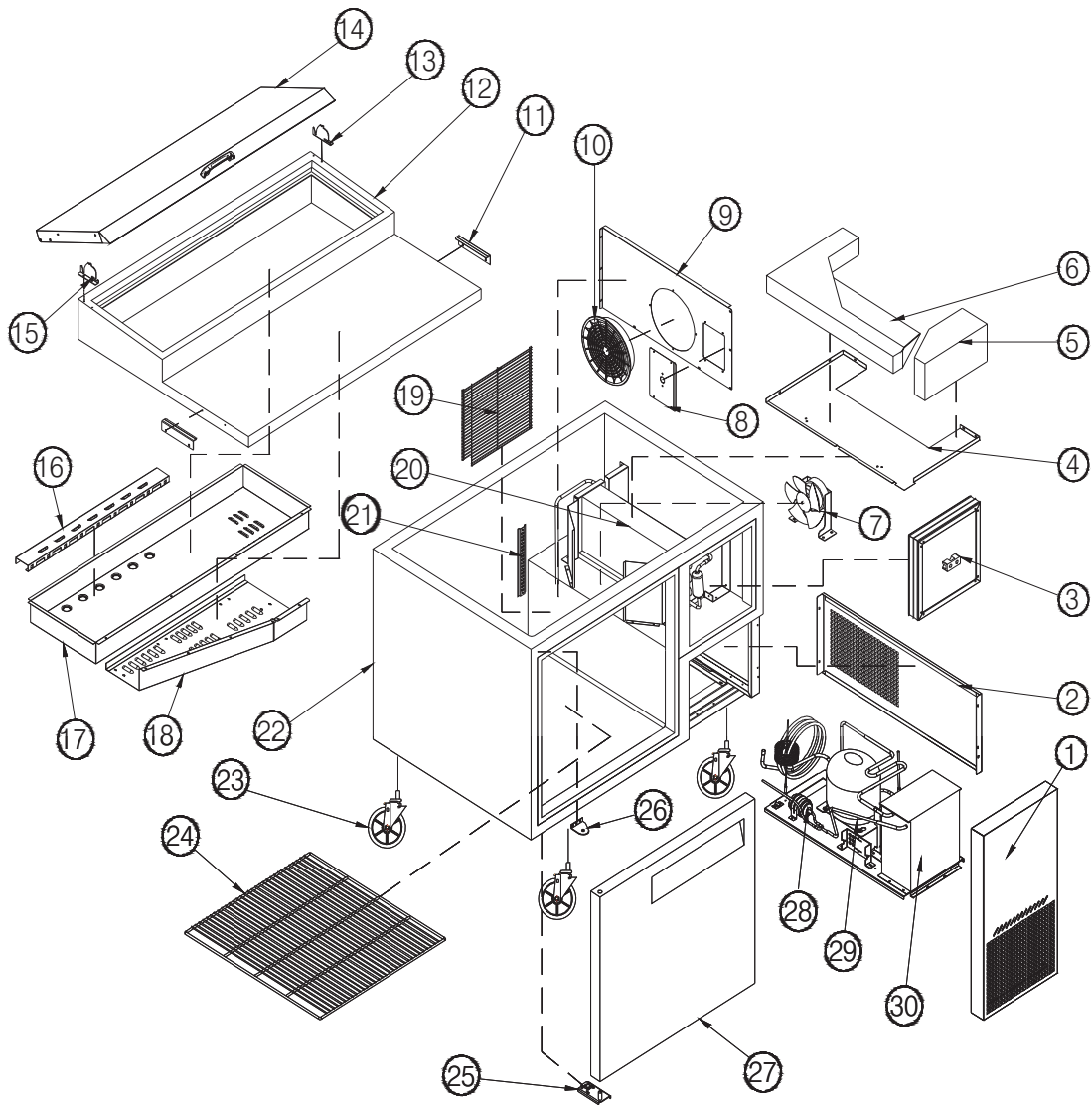
6- 2. REFRIGERATION COMPARTMENT

6-3. COMPRESSOR COMPARTMENT PARTS

6-4. REPLACING THE EVAPORATOR & EVAPORATOR FAN MOTOR

1. EXPLODED VIEW

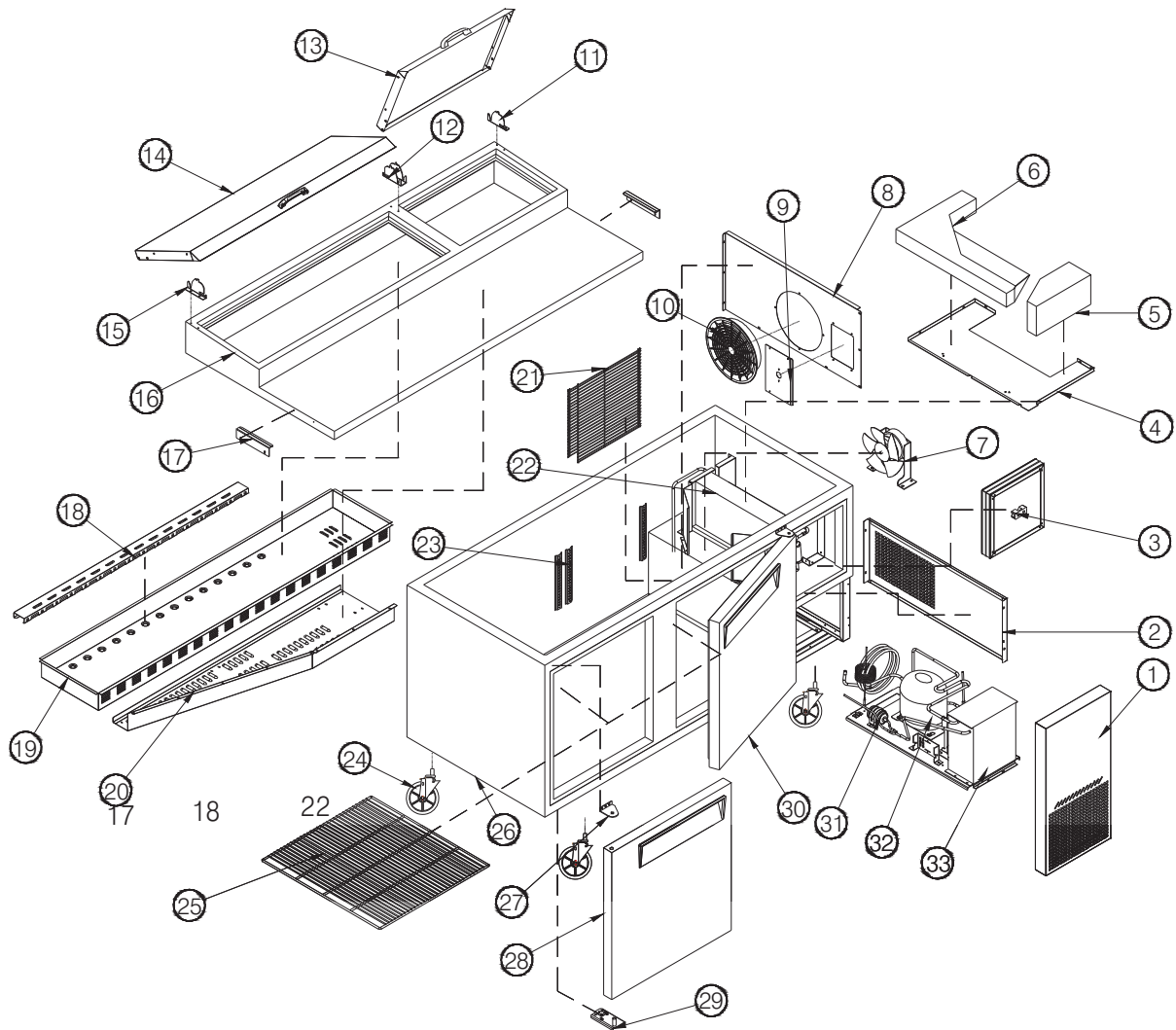
1-1. TPR-44SD EXPLODED VIEW



© Part Name

1	UNIT FRONT COVER	11	BOARD KITCHEN BRACKET	21	SHELLF STANDARD
2	UNIT SIDE COVER	12	COUNTER TOP ASSEMBLY	22	CABINET ASSEMBLY
3	A/S COVER ASSEMBLY	13	HOOD LID HINGE (R)	23	CASTER
4	EVA TOP COVER	14	HOOD LID ASSEMBLY (B)	24	SHELF
5	AIR GUIDE (R)	15	HOOD LID HINGE (L)	25	BOTTOM HINGE(L)
6	AIR GUIDE (L)	16	PAN DUCT COVER	26	TOP HINGE(L)
7	EVA FAN MOTOR ASSEMBLY	17	PAN DUCT	27	DOOR ASSEMBLY (L)
8	THERMOSTAT PANEL	18	AIR DUCT PANEL	28	HARD CORE DRYER
9	EVAP FRONT DUCT PANEL	19	MECH COVER	29	COMPRSSOR
10	COOLING MOTOR COVER	20	EVAPORATOR	30	CONDENSER

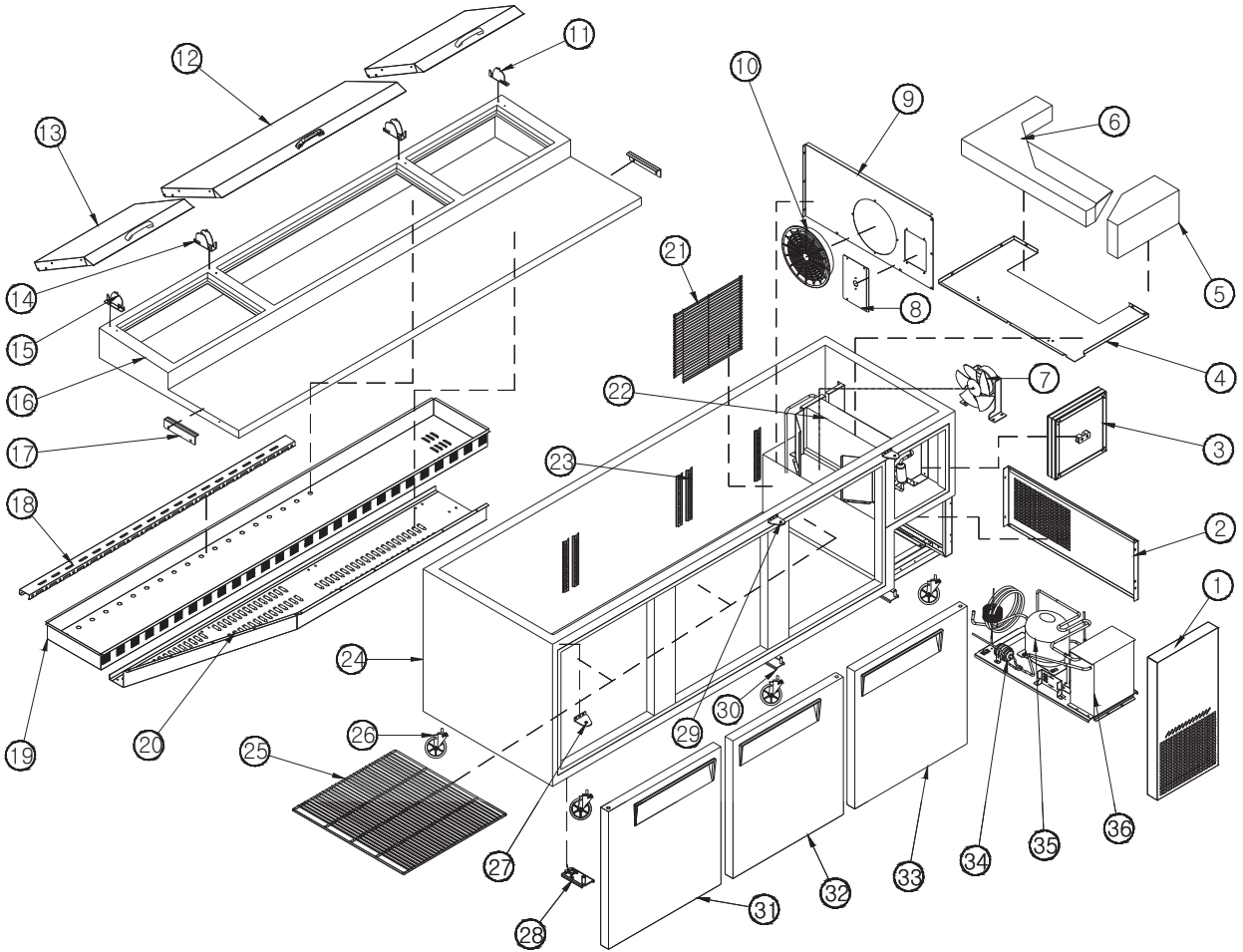
1-2. TPR-67SD EXPLODED VIEW



© Part Name

1	UNIT FRONT COVER	13	HOOD LID ASSEMBLY (S)	25	SHELF
2	UNIT SIDE COVER	14	HOOD LID ASSEMBLY (B)	26	CABINET ASSEMBLY
3	A/S COVER ASSEMBLY	15	HOOD LID HINGE (L)	27	TOP HINGE (L)
4	EVAPORATOR TOP COVER	16	COUNTER TOP ASSEMBLY	28	DOOR ASSEMBLY (L)
5	AIR GUIDE (R)	17	BOARD KITCHEN BRACKET	29	BOTTOM HINGE (L)
6	AIR GUIDE (L)	18	PAN DUCT COVER	30	DOOR ASSEMBLY (R)
7	EVAPORATOR MOTOR ASS	19	PAN DUCT	31	HARD CORE DRYER
8	EVAPORATOR FRONT DUCT	20	AIR DUCT PANEL	32	COMPRESSOR
9	THERMOSTAT PANEL	21	MECH COVER	33	CONDENSER
10	COOLING MOTOR COVER	22	EVAPORATOR ASSEMBLY		
11	HOOD LID HINGE (R)	23	SHELF STANDARD		
12	HOOD LID HINGE (M)	24	CASTER		

1-3. TPR-93SD EXPLODED VIEW

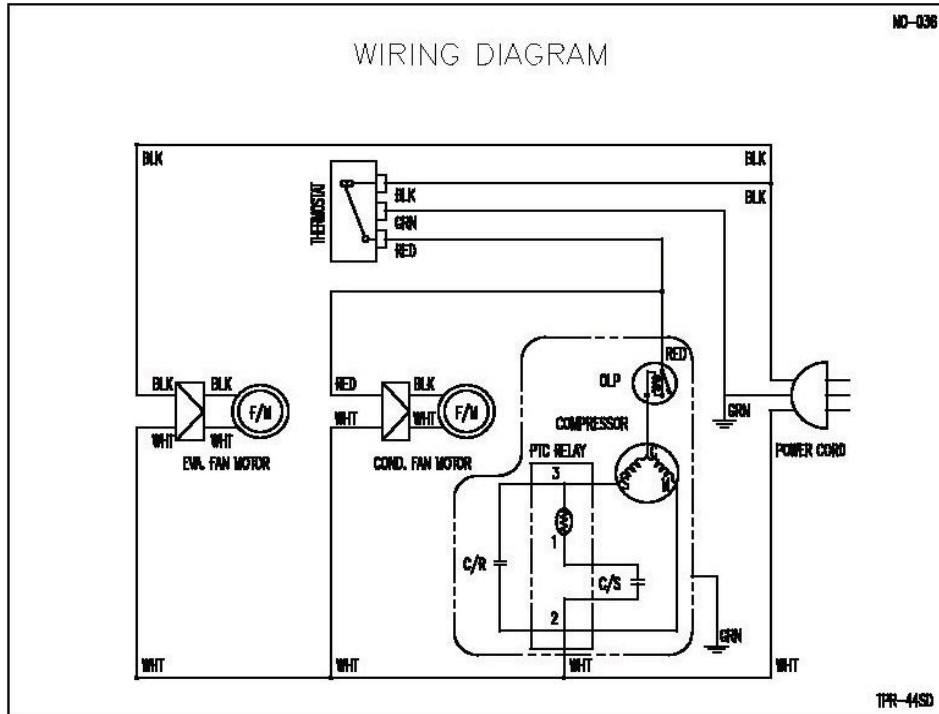


© Part Name

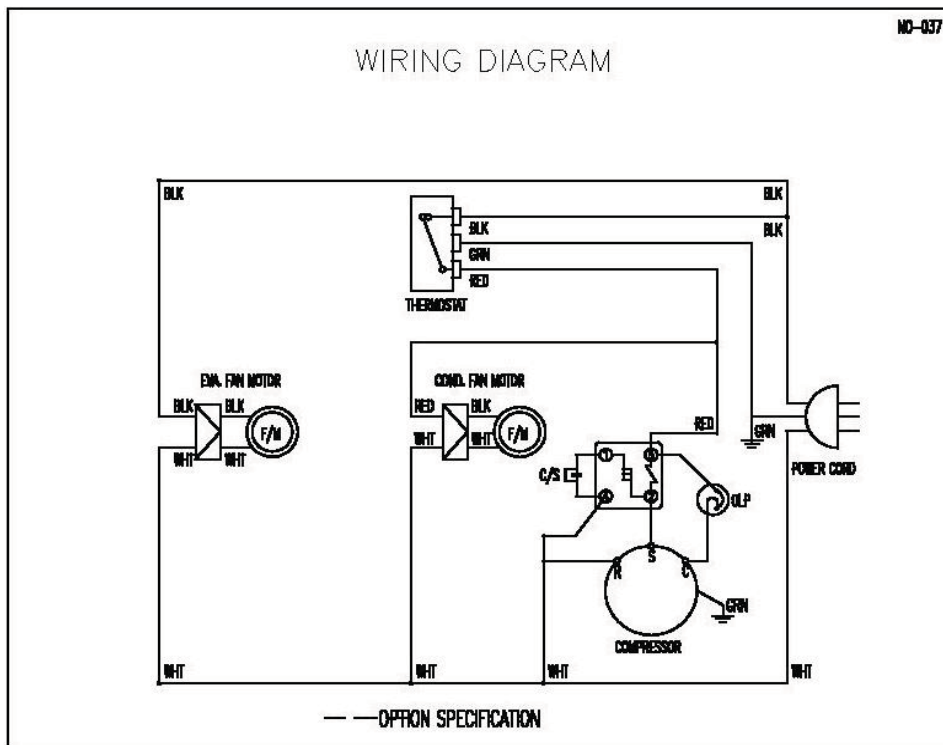
1	UNIT FRONT COVER	14	HOOD LID HINGE (M)	27	TOP HINGE (L)
2	UNIT SIDE COVER	15	HOOD LID HINGE (L)	28	BOTTOM HINGE (L)
3	A/S COVER ASSEMBLY	16	COUNTER TOP ASSEMBLY	29	TOP HINGE (R)
4	EVAPORATOR TOP COVER	17	BOARD KITCHEN BRACKET	30	BOTTOM HINGE (R)
5	AIR GUIDE (R)	18	PAN DUCT COVER	31	DOOR ASSEMBLY (L)
6	AIR GUIDE (L)	19	PAN DUCT	32	DOOR ASSEMBLY (M)
7	EVAPORATOR MOTOR ASSEMBLY	20	AIR DUCT PANEL	33	DOOR ASSEMBLY (R)
8	THERMOSTAT PANEL	21	MECH COVER	34	HARD CORE DRYER
9	EVAPORATOR FRONT DUCT	22	EVAPORATOR ASSEMBLY	35	COMPRESSOR
10	COOLING MOTOR COVER	23	SHELF STANDARD	36	CONDENSER
11	HOOD LID HINGE (R)	24	CABINET ASSEMBLY		
12	HOOD LID ASSEMBLY (B)	25	SHELF		
13	HOOD LID ASSEMBLY (S)	26	CASTER		

2. WIRING DIAGRAMS

2-1. TPR-44SD



2-2. TPR-67/93SD



3.MAIN COMPONENTS

1.COMPRESSOR

MODEL	PART NAME	PART NO.	HORSE	CAPACITY	TYPE OF	INPUT	MAKER
TPR-44SD	HBL-27YE-1	M369700100	1/4HP	~	CSR	110-115V 60Hz	DAEWOO
TPR-67SD	CAE4456Y	M729700100	1/2HP	~	CSIR	115V 60Hz	TECUMSHE
TPR-93SD	CAE2420Z	G2F5700100	1/2HP	~	CSIR	115V 60Hz	TECUMSHE

2.COMPRESSOR RELAY ,OVERLOAD

MODEL	RELAY	OVERLOAD	MAKER	NOTE
TPR-44SD	GSR SO68 E03 03	783RHBZZ-52	DAEWOO	~
TPR-67SD	3ARR12	MST16AGZ-3240D5AP	TECUMSHE	~
TPR-93SD	3ARR1212KP*483	MST16AHN	TECUMSHE	~

3.COMPRESSOR CAPACITOR

MODEL	STARTING	PART NO.	RUNNING	PART NO.	MAKER	NOTE
TPR-44SD	200V/100uF	~	~	~	~	~
TPR-67SD	160V/315uF	~	~	~	~	~
TPR-93SD	160V/315uF	~	230V/10uF	~	~	~

4.CONDENSER FAN MOTOR

MODEL	PART NAME	PART NO.	POLE	INPUT	TYPE	BLADE	MAKER
TPR-44SD	IS-	G8F6600100	4P	115V 60Hz	SHADED POLE INDUCTION	AL 4	SUNGSHIN
TPR-67SD	4420DWSG						
TPR-93SD	-1						

5.EVAPORATOR FAN MOTOR

MODEL	PART NAME	PART NO.	POLE	INPUT	TYPE	BLADE (NUMBER)	NO
TPR-44SD	IS-	3963328120	4P	115V 60Hz	SHADED POLE INDUCTION	AL 5	1
TPR-67SD	4420DWSN						
TPR-93SD	-2A						

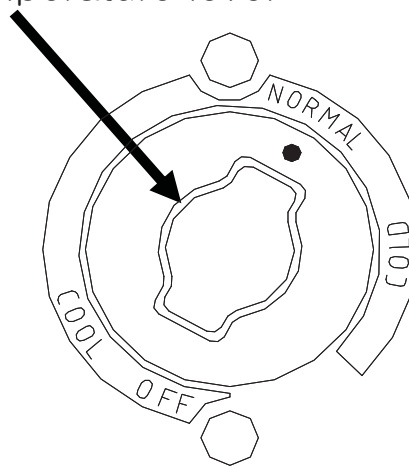
6.THERMOSTAT

PART NAME	PART NO.	RATING	MAKER
THERMOSTAT	Z960300300	K55Q-5608,16A	RANCO

4. TEMPERATURE CONTROL INSTRUCTION

- Temperature can be controlled by the user.
- Factory setting is at "NORMAL" Settings can be changed by Dial Knob.

© Indicates temperature level



TEMPERATURE
CONTROLLER

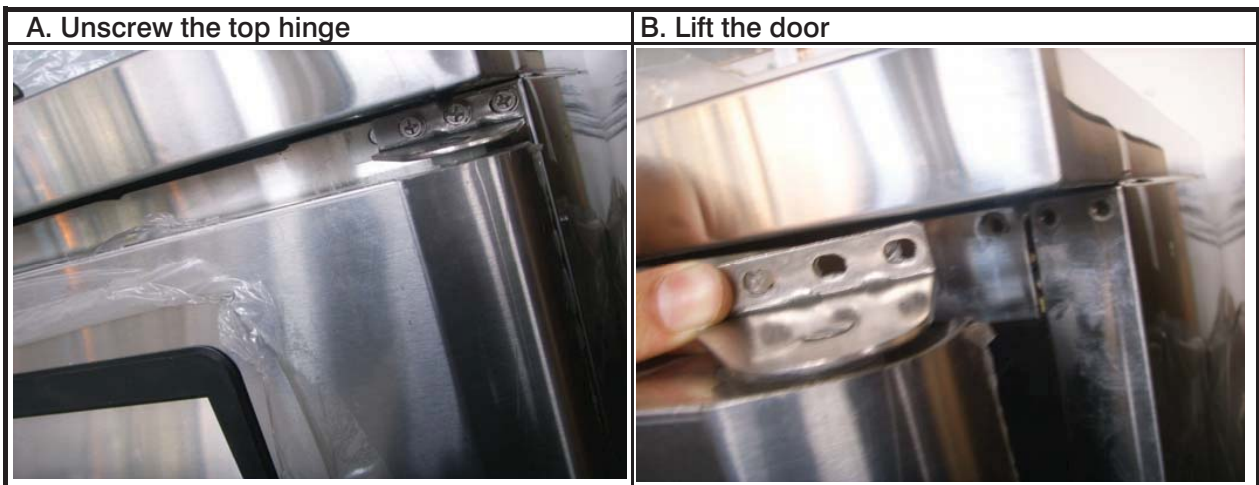
- *If thermostat knob is pointing at OFF, compressor and condenser fan motor would not run.*
- *Keep unit unplugged, if not in use for a long period of time.*

5. PARTS LIST

Part Name	Part Code	Description	Model			Remark
			44	67	93	
1. DOOR						
DOOR ASSEMBLY (L)	Z440500100	SUS439-#4	1			
DOOR ASSEMBLY (L)	Z930500100	SUS439-#4		1	1	
DOOR ASSEMBLY (M)	Z930600100	SUS439-#4			1	
DOOR ASSEMBLY (R)	Z930700100	SUS439-#4		1	1	
DOOR GASKET	Z443101000	PVC	1			
DOOR GASKET	Z673101100	PVC		2	2	
DOOR GASKET	Z933101700	PVC			1	
TOP HINGE (R)	M722900100	SUS304,SM45C		1	2	
TOP HINGE (L)	M722900200	SUS304,SM45C	1	1	1	
TOP HINGE SPACER	M725000100	SUS439-2B	1	2	3	
BOTTOM HINGE (U)(R)	30229M0400	SUS304,SM45C		1	2	
BOTTOM HINGE (U)(L)	30229M0300	SUS304,SM45C	1	1	1	
SPRING BAR	30251M0105	HSW-3	1	2	3	
2. COUNTER TOP & HOOD						
COUNTER TOP ASSEMBLY	Z440100100		1			
COUNTER TOP ASSEMBLY	Z670100100			1		
COUNTER TOP ASSEMBLY	Z930100100				1	
HOOD LID ASSEMBLY(S)	Z930900100			1	2	
HOOD LID ASSEMBLY(B)	Z930800100		1	1	1	
HOOD LID HINGE (L)	Z932900700	SUS304	1	1	1	
HOOD LID HINGE (M)	Z932900600	SUS304		1	2	
HOOD LID HINGE (R)	Z932900500	SUS304	1	1	1	
BRACKET BOARD KITCHEN	Z932000100	SUS304-2B	2	2	2	
3. COMPRESSOR COMPARTMENT						
COMPRESSOR	M369700100	HBL27YE-1	1			
COMPRESSOR	M729700100	CAE4456Y		1		
COMPRESSOR	G2F5700100	CAE2420Z			1	
POWER CORD	M721300198	KKP-30(9.85FT)	1	1	1	
DRAIN PAN	30211A0203	P.P	1	1	1	
CONDENSER MOTOR BRAC	302060224	GI	1	1	1	
CONDENSER FAN BLADE	P8F2700300	AL	1	1	1	
CONDENSER FAN MOTOR	G8F6600100	IS-4420DWSG-1	1	1	1	
CONDENSER	Z934500100		1	1	1	

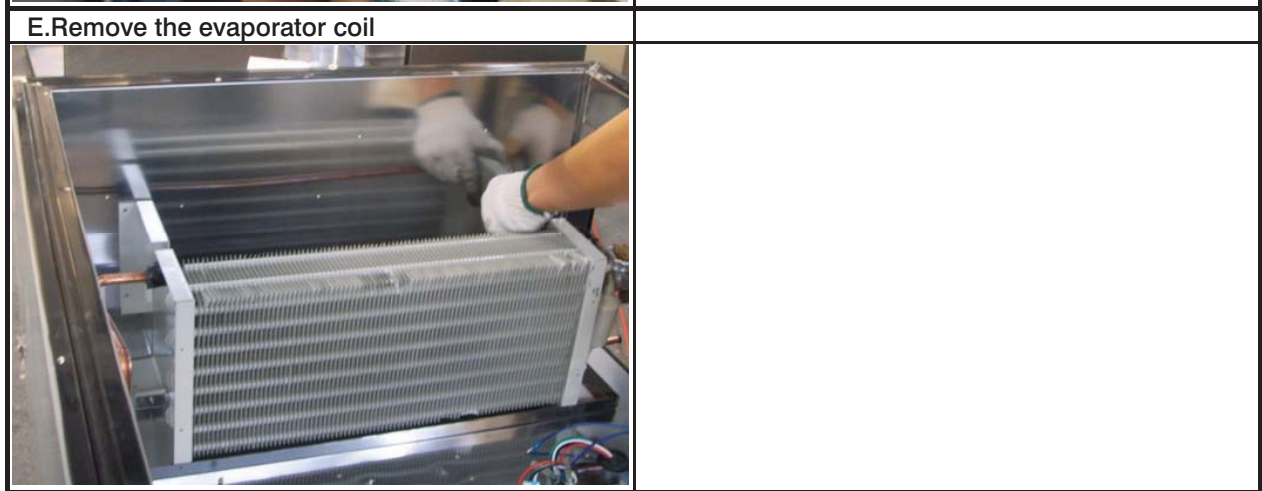
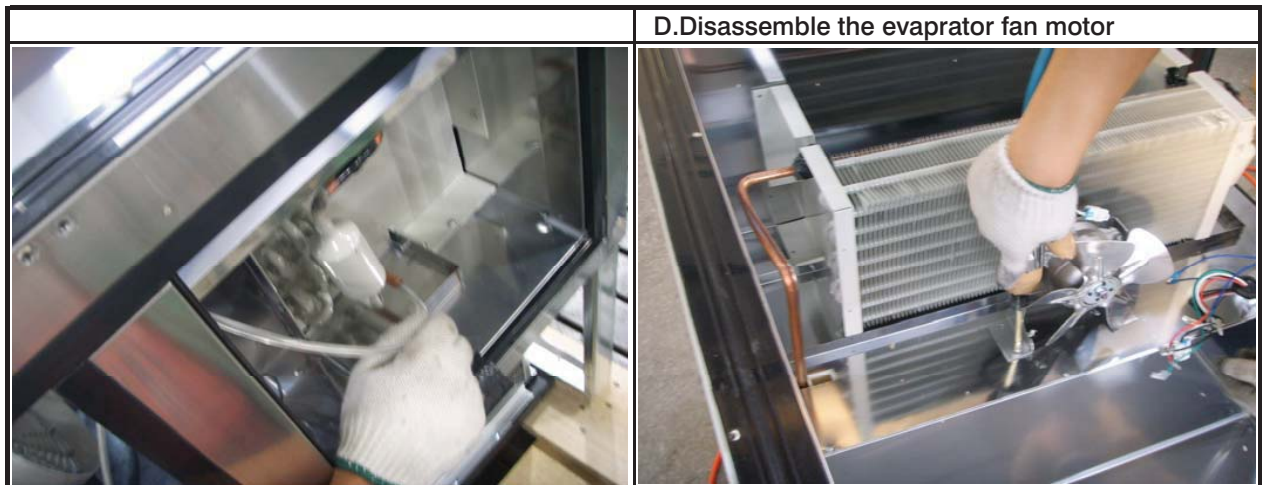
6. REPLACEMENT OF MAIN COMPONENTS

6-1. REPLACING DOOR

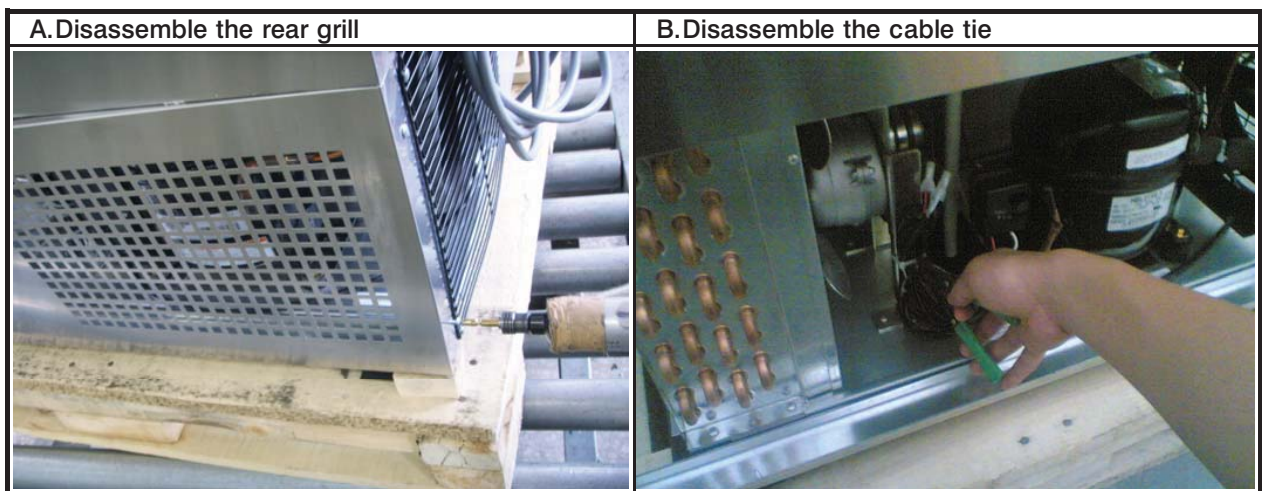


6-2. REFRIGERATION COMPARTMENT PARTS





6-3. COMPRESSOR COMPARTMENT PARTS



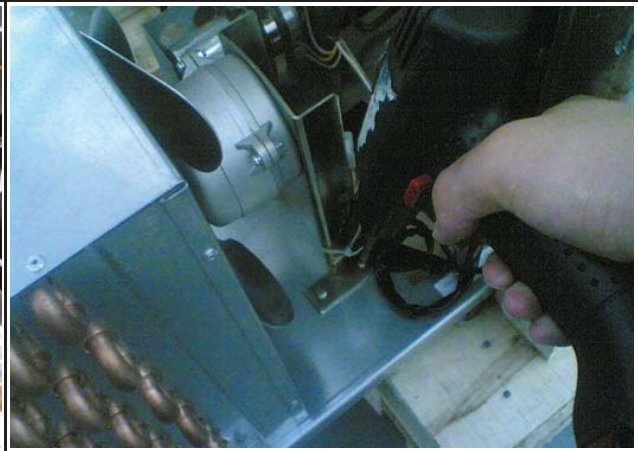
C.Remove the unit front cover



D.Disassemble the condensing unit



E.Disassemble the condenser fan motor



6-4. REPLACING THE EVAPORATOR & EVAPORATOR FAN MOTOR

A. Unscrews the screws located on left and right side of the evap front duct panel



B. And then, you can replace fan motor, evaporator coil and thermo sensor

